



SkullCandy Hesh headband repair

The purpose of this guide is to show how to repair a dislocated headphone size adjuster.

Written By: Sarah Burk



INTRODUCTION

This guide will outline all the steps necessary to reattach a size adjuster that's snapped. Wires exposed in this area will result in either a cessation in sound production, or sound being produced in only one side of the device. When troubleshooting these problems, this is the last solution to check, as it requires the most time.



TOOLS:

- [Pasti Dip](#) (1)
 - [Cotton Swabs](#) (1)
 - [Phillips #0 Screwdriver](#) (1)
-

Step 1 — Determine the damage



- Locate the break in the device.

Step 2



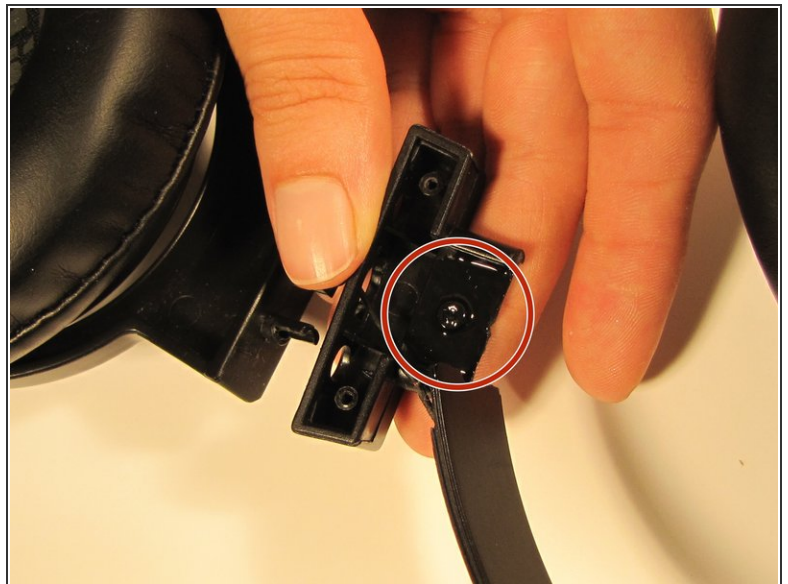
- Use a Philips #0 screwdriver to remove the two 9 cm screws beneath the break. Keep them in a safe place for reassembly.

Step 3



- Remove the bottom inner casing to reveal the wire compartment.

Step 4



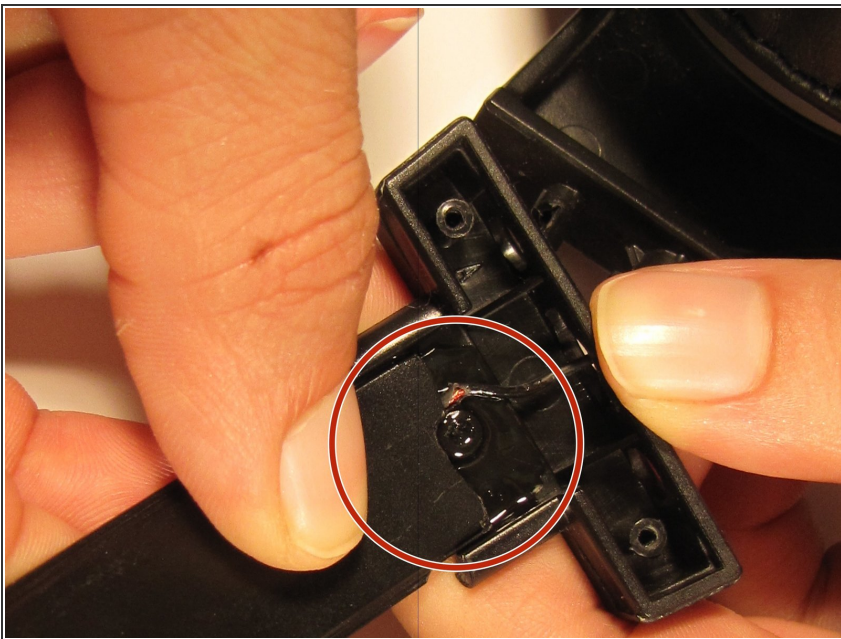
- Cover the detached slider port in a layer of Plasti Dip, which works like glue. Also coat any exposed wire to seal the circuit.

Step 5



- Realign the broken size adjuster, so that it can be secured to the ear piece.

Step 6



- Clamp the pieces in place until the Plasti Dip dries. Feel free to use a hair dryer on a low setting to speed up the process.

To reassemble your device, follow these instructions in reverse order.