



Skytex Skypad Alpha 2 Back Cover Replacement

Use this guide to remove the back of the Skytex Skypad Alpha 2 to access other parts of the product and replace cover.

Written By: Elizabeth Wittliff



INTRODUCTION

By following this guide one is able to access the inside of the Skytex Skypad Alpha 2 tablet in four steps. These steps include locating and unscrewing the screws that are found at the sides of the tablet and using a plastic opening tool to separate the back case from the tablet and replace if necessary.

TOOLS:

- [iFixit Opening Tools](#) (1)
 - [Phillips #000 Screwdriver](#) (1)
-

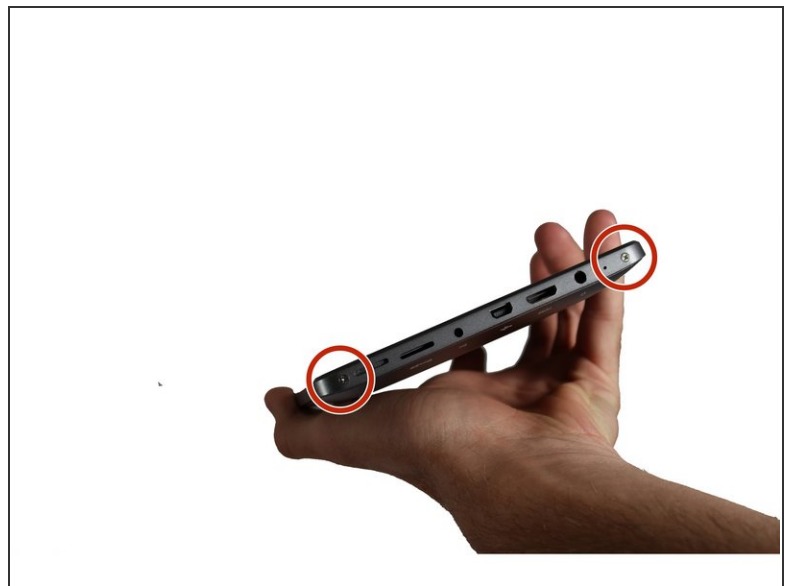
Step 1 — Back Cover



- Power off the tablet.

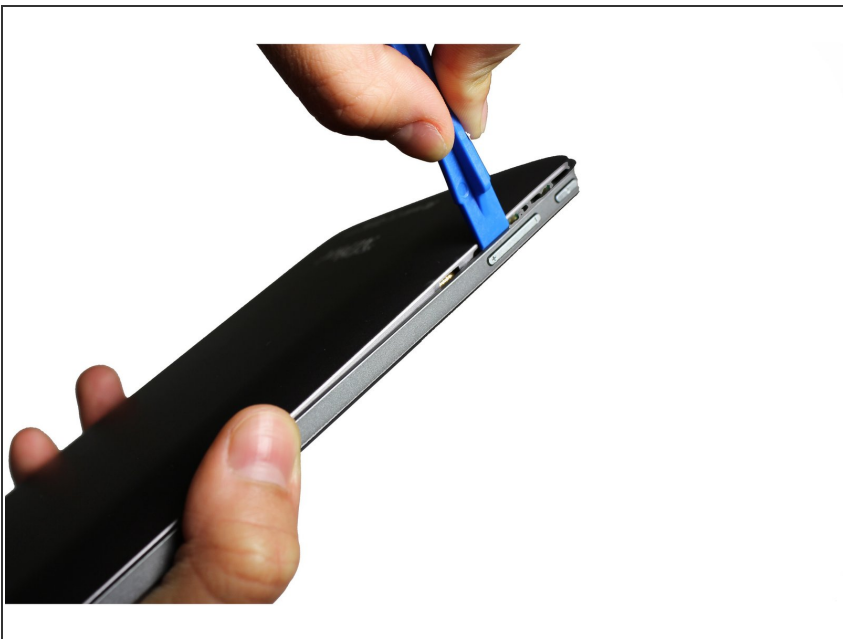
⚠ Unplug the tablet from the power source if it is connected.

Step 2



- Remove the (4) 3.5mm screws using a phillips #000 screwdriver.

Step 3



- Use the plastic opening tool to work your way around the tablet, releasing the back case from the tabs.

Step 4



- Release the back case from the rest of the tablet with your hand.
- ⚠ Do not pry the case too hard; doing so can damage the tablet.

To reassemble your device, follow these instructions in reverse order.