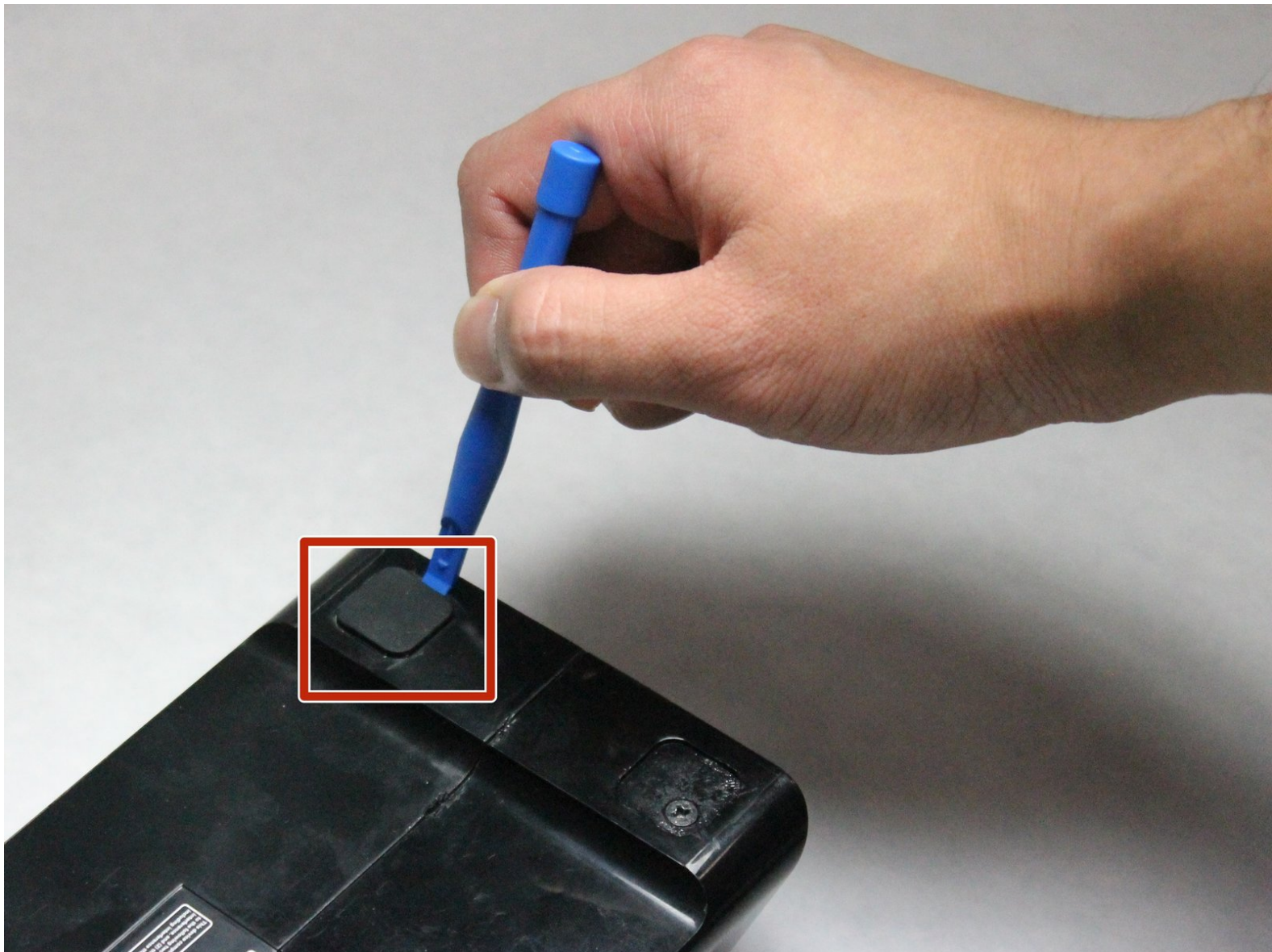




Slingbox SOLO Motherboard Replacement

Remove the Slingbox SOLO case to access the motherboard for replacement.

Written By: Nitin Muralidhar



INTRODUCTION

The purpose of this guide is to show the steps necessary to remove the casing of the Slingbox and replace the motherboard.

TOOLS:

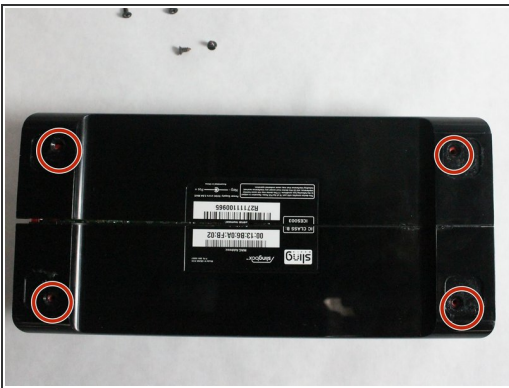
- [iFixit Opening Tools](#) (1)
 - [Phillips #1 Screwdriver](#) (1)
-

Step 1 — Motherboard



- Use the plastic opening tool to remove the four rubber pads from the bottom of the device.

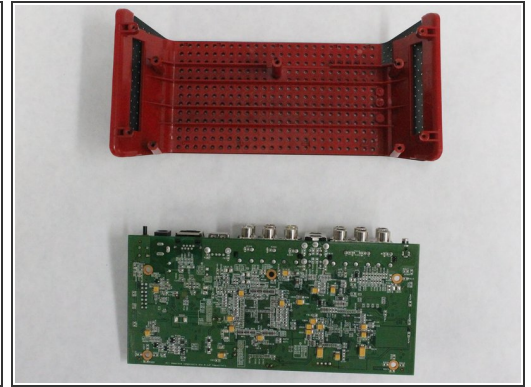
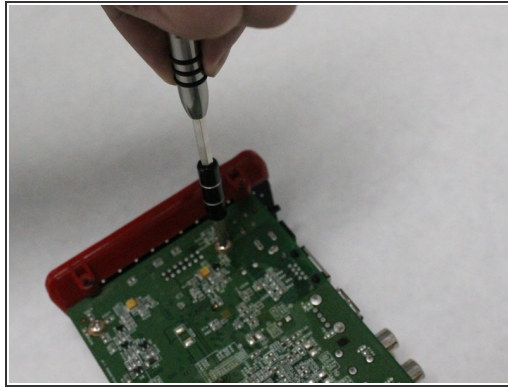
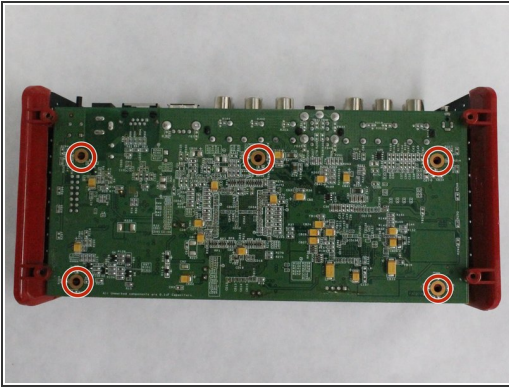
Step 2




i The Slingbox has four black 5mm screws, one on each corner of the case.

- Remove the four black 5mm screws using the PH1 screwdriver.
- Gently pull and separate the two case covers.

Step 3



 The motherboard has five silver 5.5mm screws connecting it to the base of the Slingbox.

- Remove the five silver screws on the motherboard using the PH1 screwdriver.
- Gently slide and separate the motherboard from the base.

To reassemble your device, follow these instructions in reverse order.