



Smoke Detector Battery Replacement

This guide will teach homeowners how to replace their smoke detector battery.

Written By: Lila Lowe



INTRODUCTION

Smoke detectors are used to keep homes safe from fire. A beeping smoke detector means that it is time for a new battery. This guide will walk users through the steps of replacing a battery in a home smoke detector.



TOOLS:

- [9 Volt Battery](#) (1)

New

Step 1 — Battery Replacement



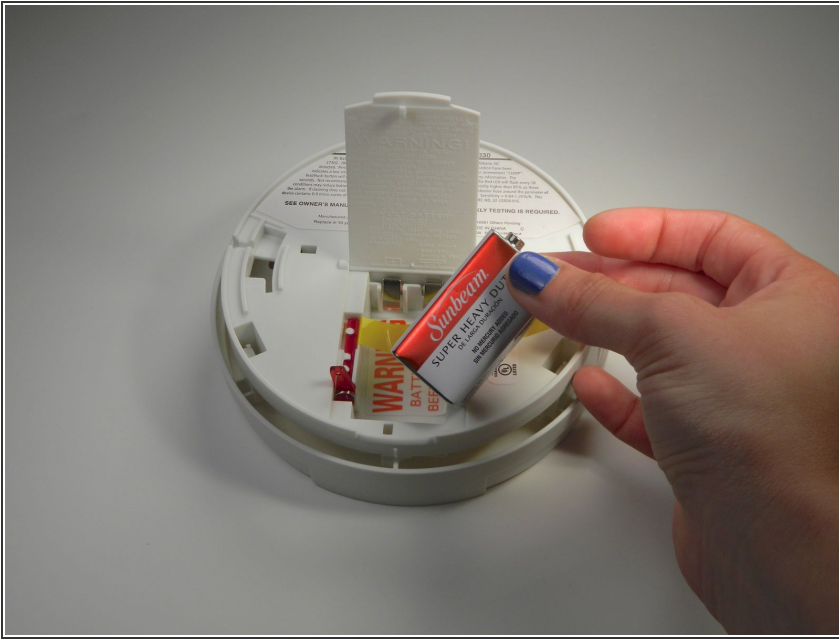
- Remove the smoke detector from the ceiling by twisting the smoke detector counter-clockwise.

Step 2



- Open the battery compartment in the back of the smoke detector.

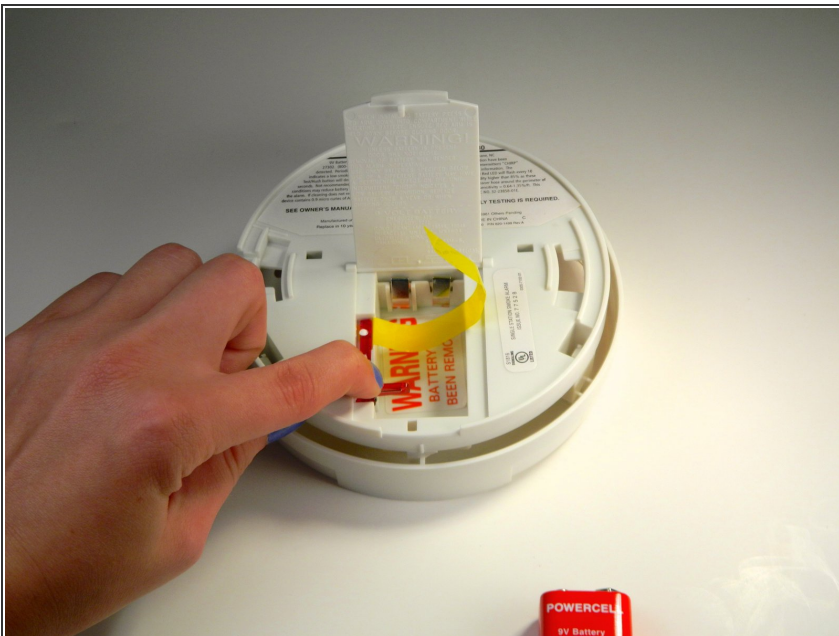
Step 3



- Lift the battery out of the battery compartment.

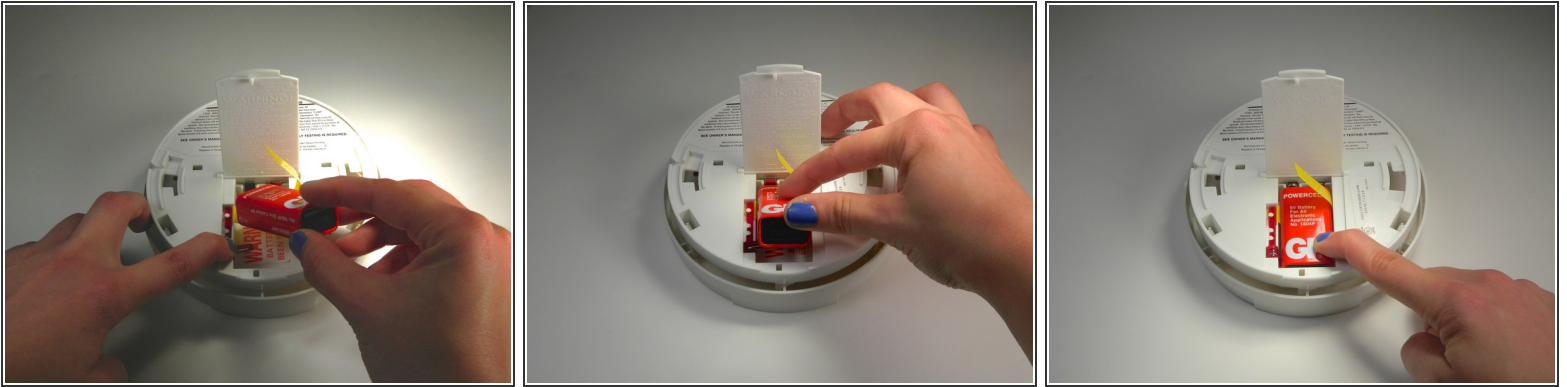
⚠ Dispose of the battery properly.

Step 4



- Push the red switch down with your finger.

Step 5



- Place the new battery on top of the red switch.
- Push the new battery into the battery compartment.
- ☑ Make sure the red switch remains down while the battery is in the battery compartment.

To reassemble your device, follow these instructions in reverse order.