



SodaStream Source External Disassembly

Prerequisite Only

Written By: Hailey Smith

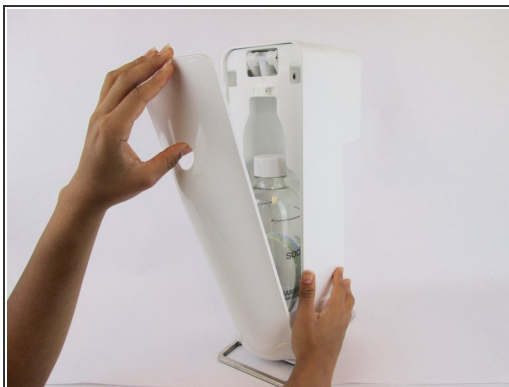
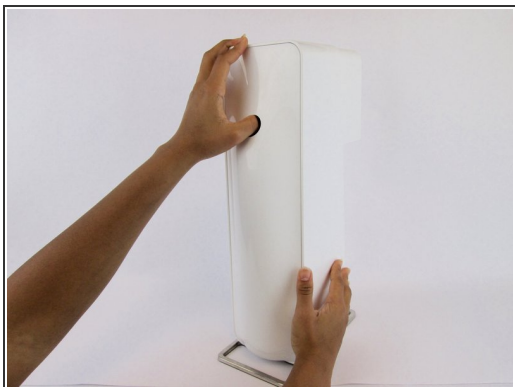




TOOLS:

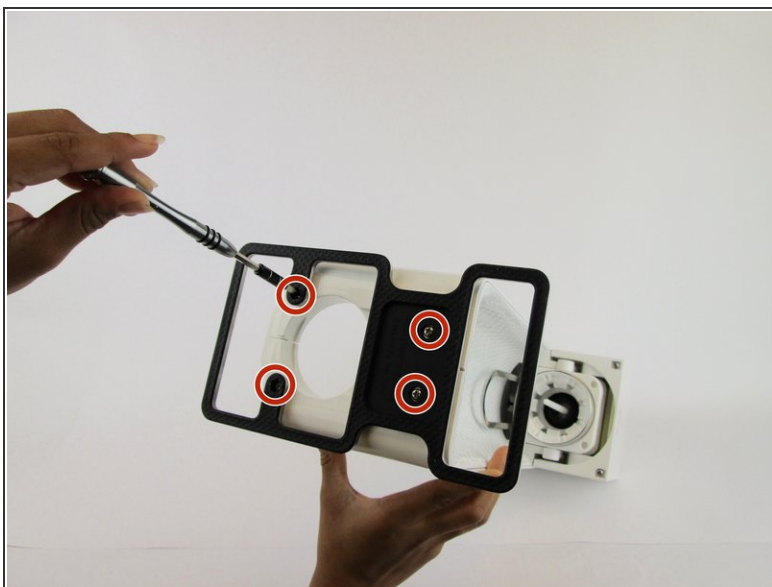
- [Phillips #1 Screwdriver](#) (1)
-

Step 1 — SodaStream Source External Disassembly



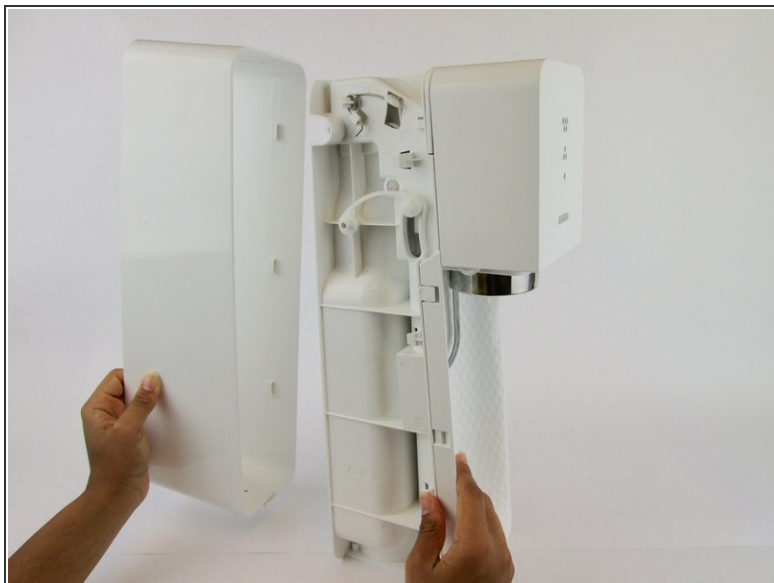
- Remove the soda bottle and the CO2 canister from the machine.

Step 2



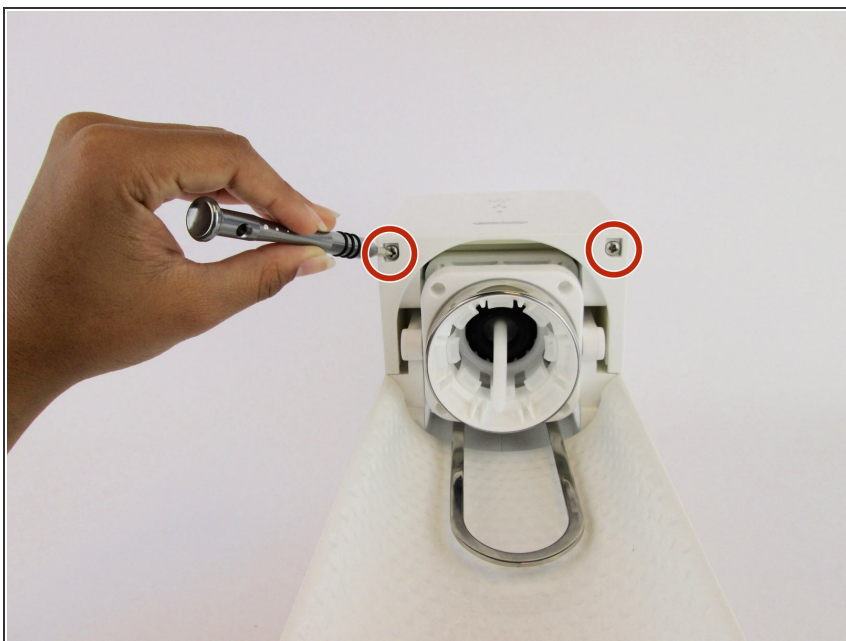
- Remove the four 17.8 mm screw from the bottom metal base using a [Phillips #1 screwdriver](#).

Step 3



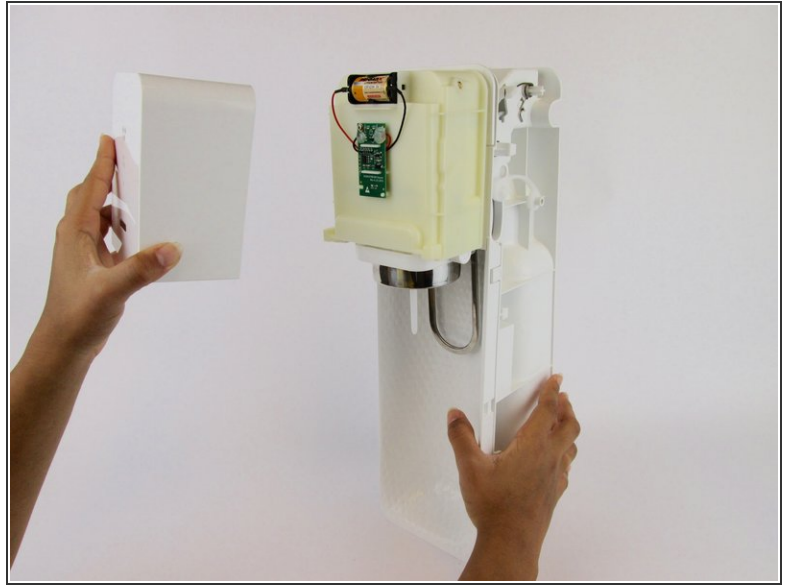
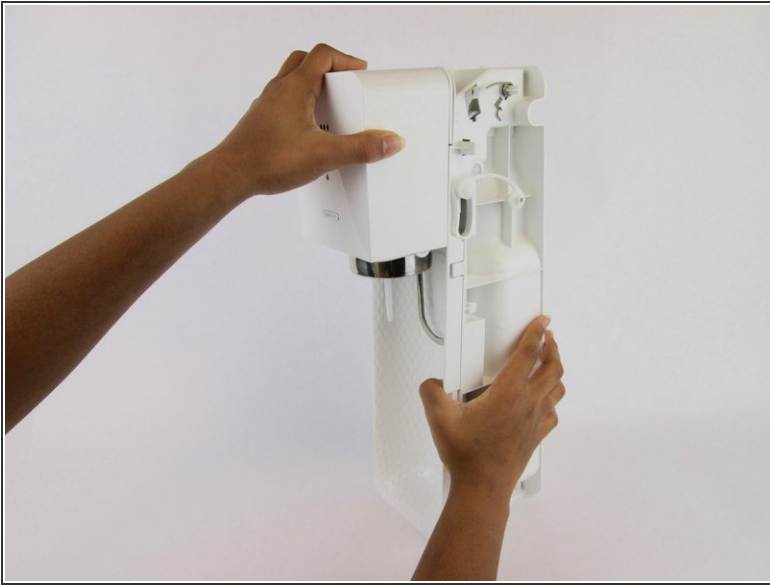
- Pull the outer cover away from the front of the device.

Step 4



- Remove the two 18.2 mm screws from the bottom of the front cover using a [Phillips #1 screwdriver](#).

Step 5



- Firmly pull the front cover off.
- ⓘ This piece is difficult to remove and requires force. It may help to use a wide, thin object to pry it off (like a [Jimmy](#)).

To reassemble your device, follow these instructions in reverse order.