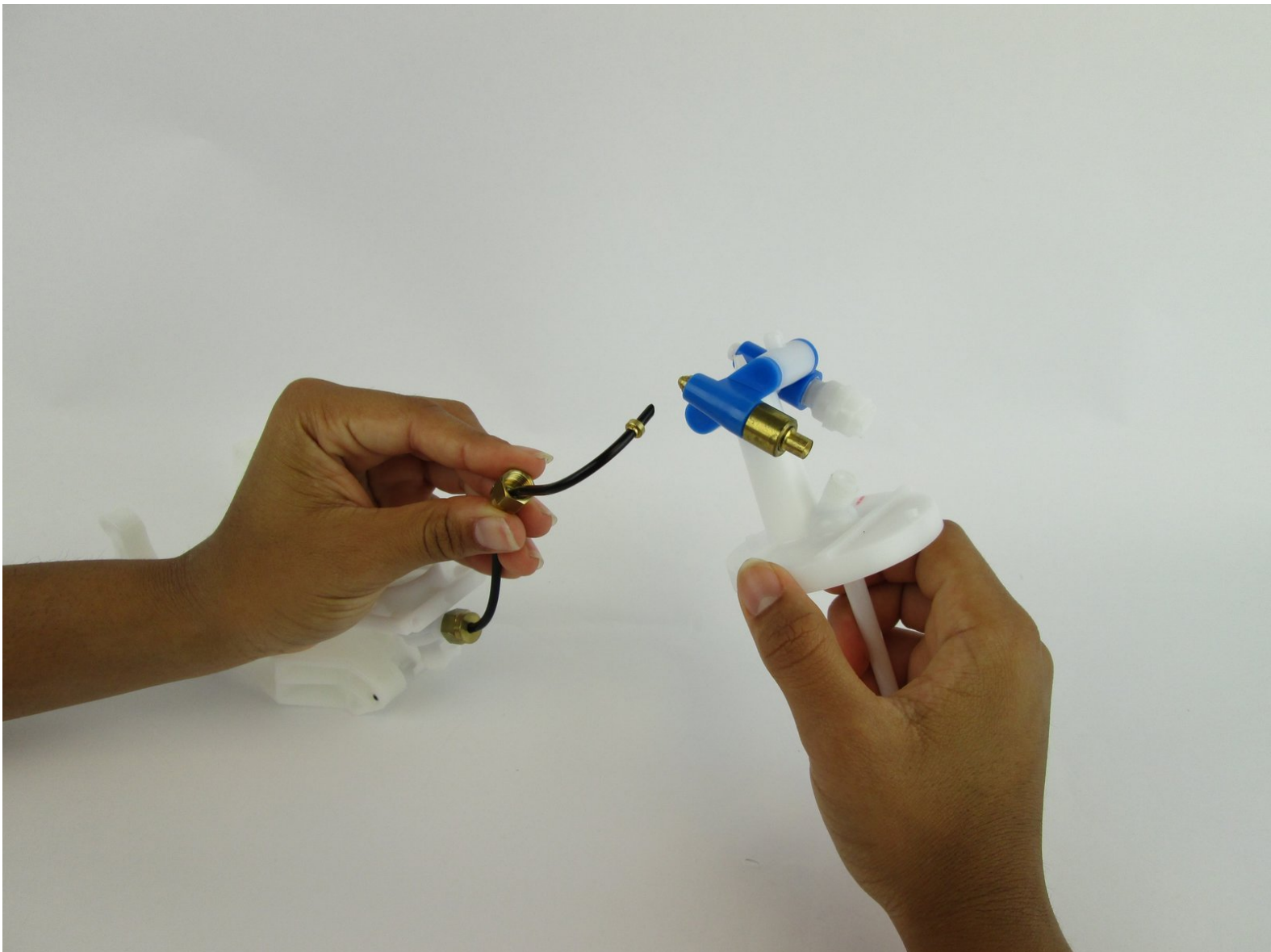




# SodaStream Source Internal Carbonation Air Hose Replacement

If you hear air escaping from inside the machine, even after following troubleshooting steps, you may need to replace the internal air hose.

Written By: Hailey Smith



## INTRODUCTION

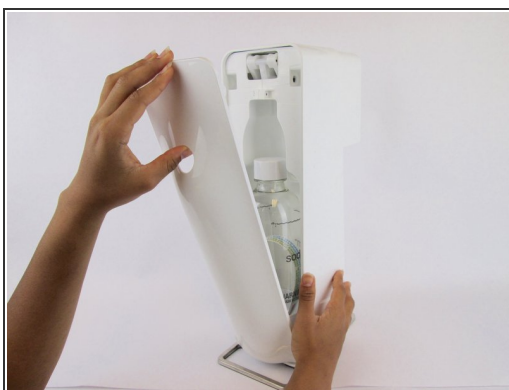
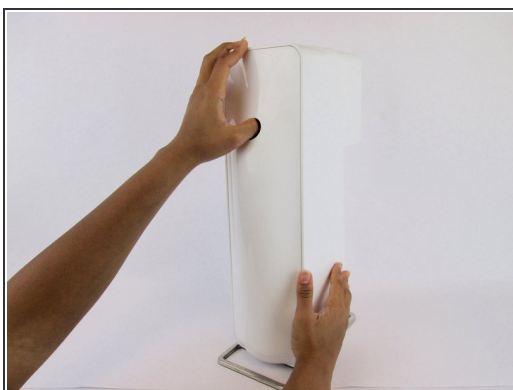
Sometimes when you operate your SodaStream, the drink does not come out fizzy enough, or you can hear gas escaping on the inside. This may be an issue with the internal air hose. This is a small piece that is part of the inner machine setup. The hose is what helps the carbonation process, it connects the carbonation bottle with the nozzle on the main loader tab, and if it is damaged in any way you may not be able to use your device. In this guide, you will see how the hose can be disconnected and replaced if the need arises.

---

### TOOLS:

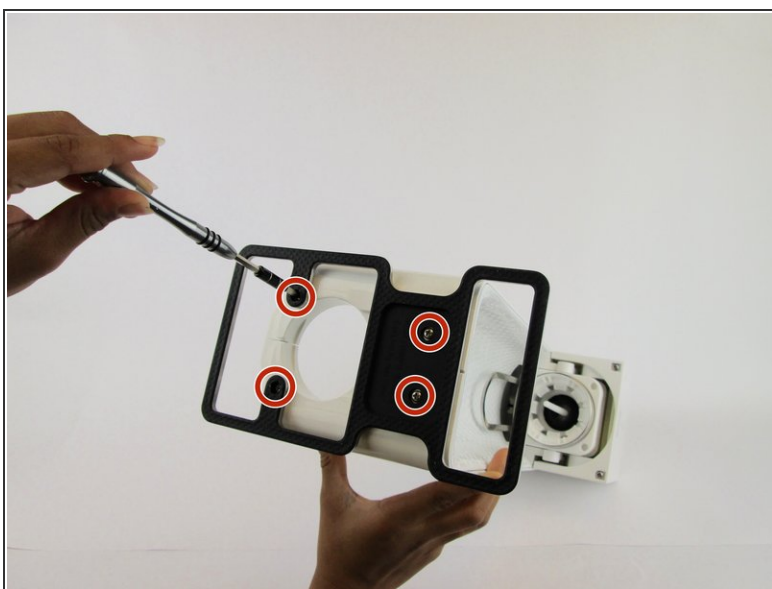
- [iFixit Opening Tools](#) (1)
  - [Slip Joint Pliers](#) (1)
  - [Phillips #1 Screwdriver](#) (1)
-

## Step 1 — SodaStream Source External Disassembly



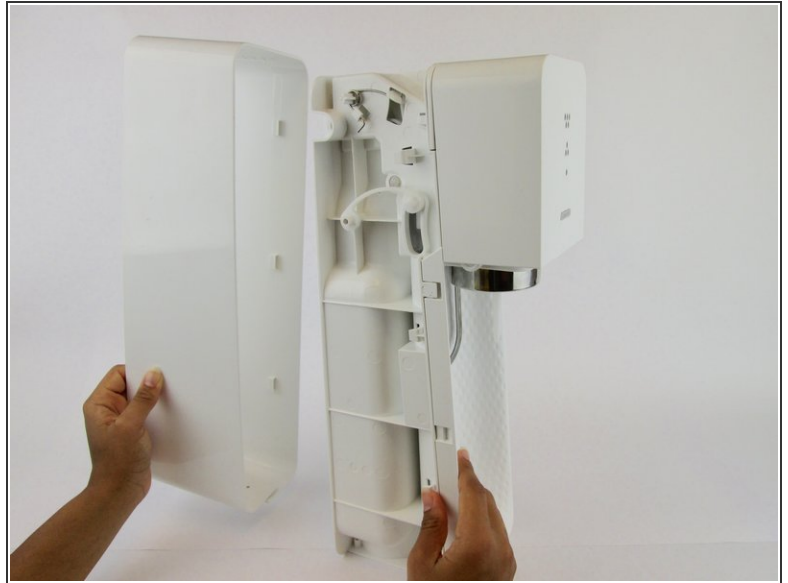
- Remove the soda bottle and the CO2 canister from the machine.

## Step 2



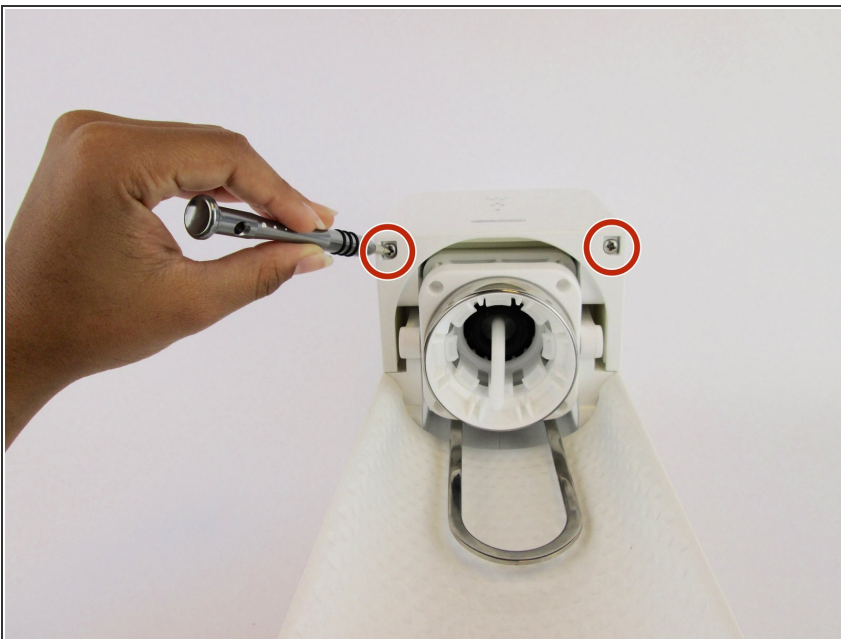
- Remove the four 17.8 mm screw from the bottom metal base using a [Phillips #1 screwdriver](#).

### Step 3



- Pull the outer cover away from the front of the device.

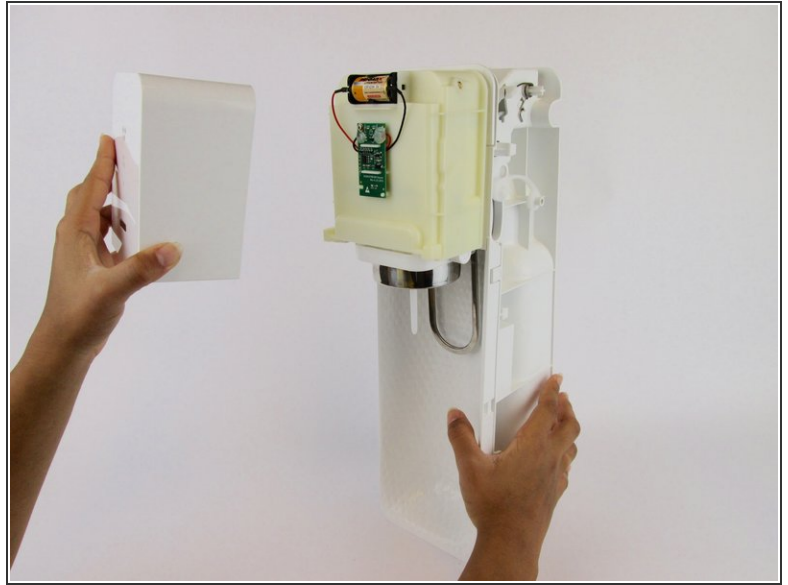
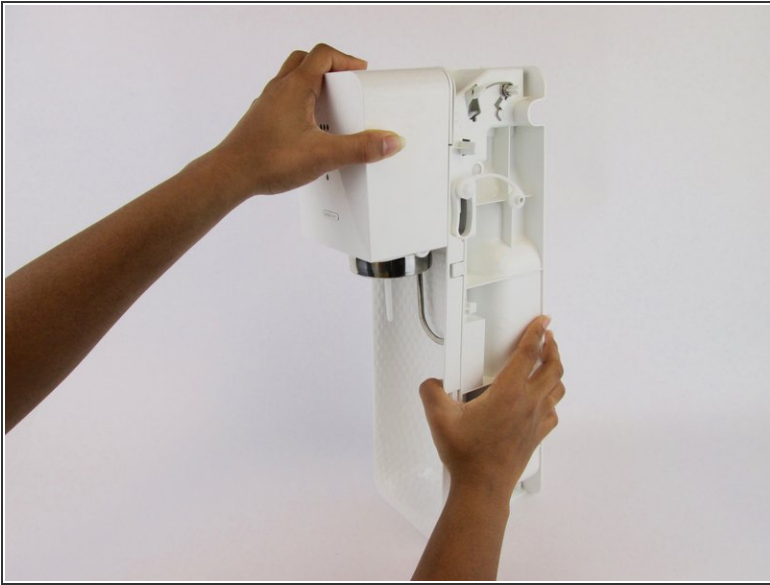
### Step 4



- Remove the two 18.2 mm screws from the bottom of the front cover using a [Phillips #1 screwdriver](#).



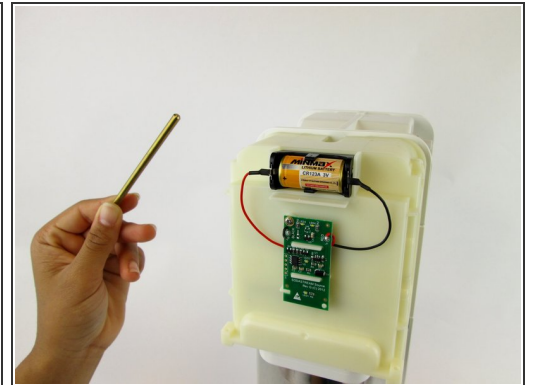
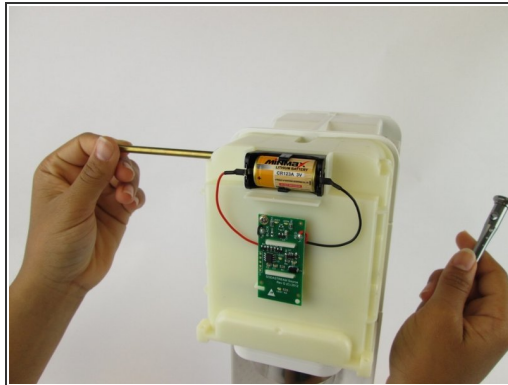
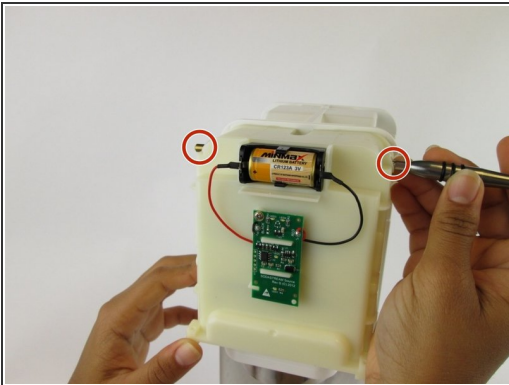
## Step 5



- Firmly pull the front cover off.

**i** This piece is difficult to remove and requires force. It may help to use a wide, thin object to pry it off (like a [Jimmy](#)).

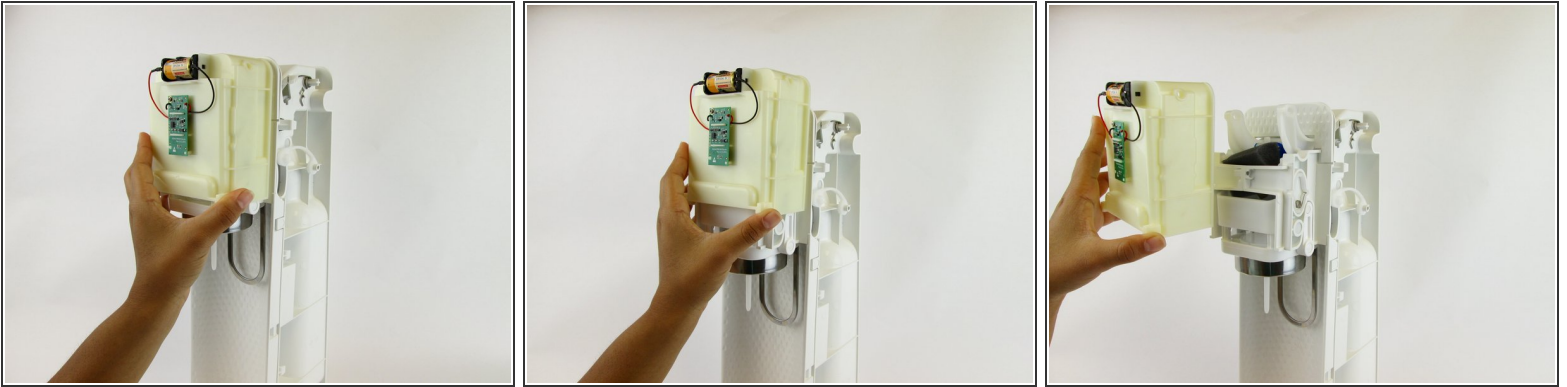
## Step 6 — SodaStream Source Internal Disassembly



- Push the gold bar, located in the top of the device, out of the carbonating block.

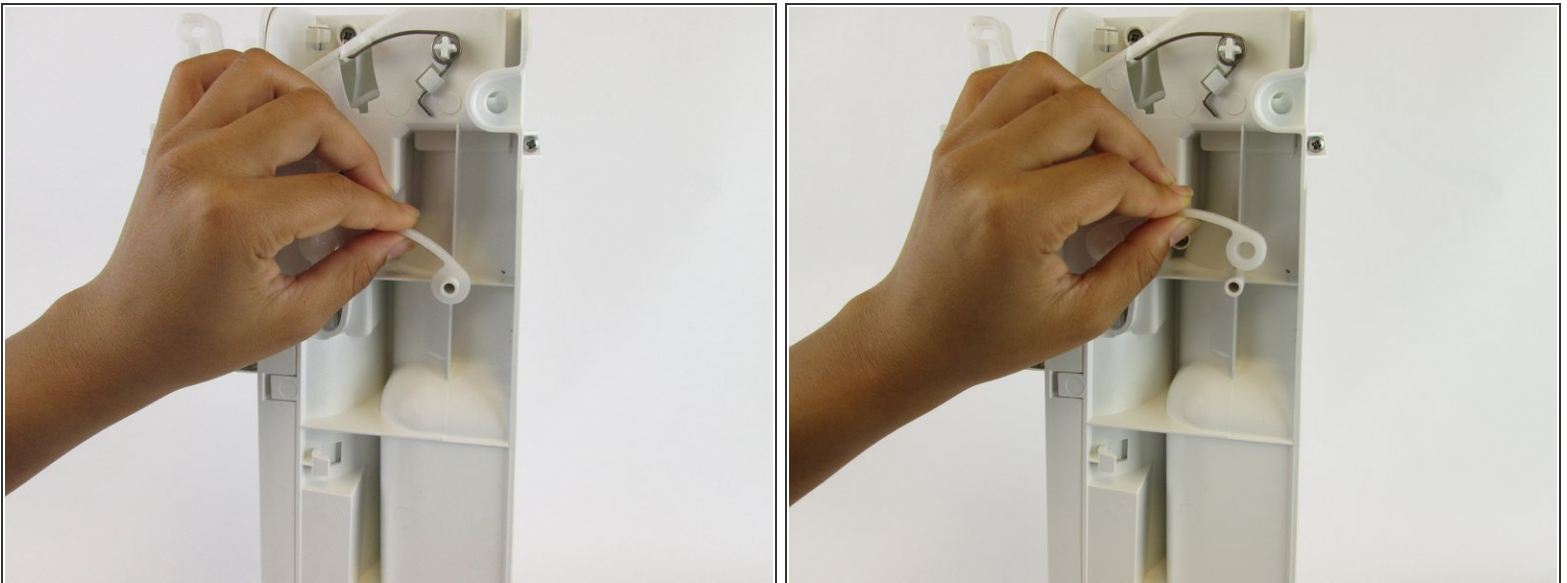
**i** You can use the end of your screwdriver to push this piece out.

## Step 7



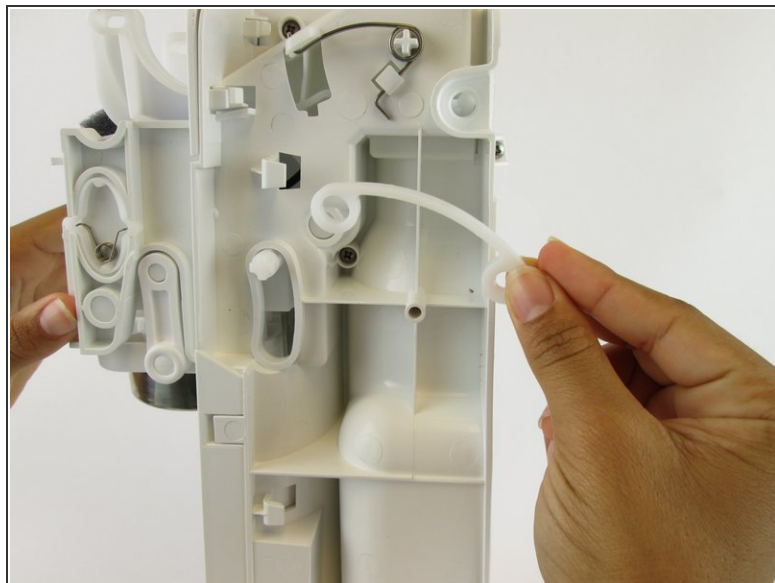
- Slide the yellow battery cover up and away to remove it from the device.

## Step 8



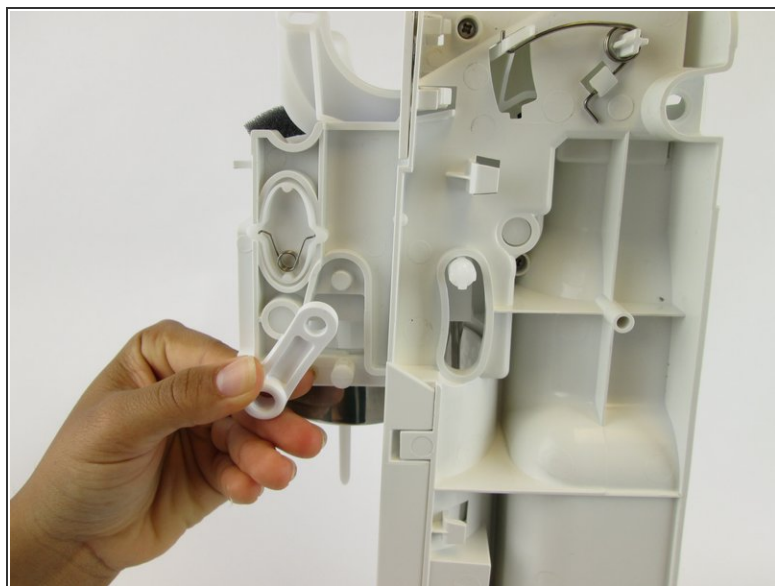
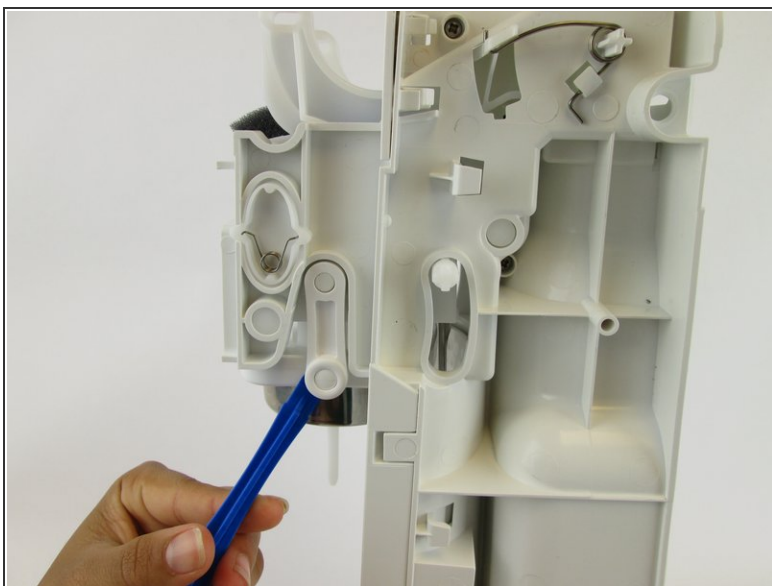
- Unhook the bottom piece of the plastic arm on each side of the device.

## Step 9



- Lift the top of the plastic arm with the spudger and remove it on both sides.

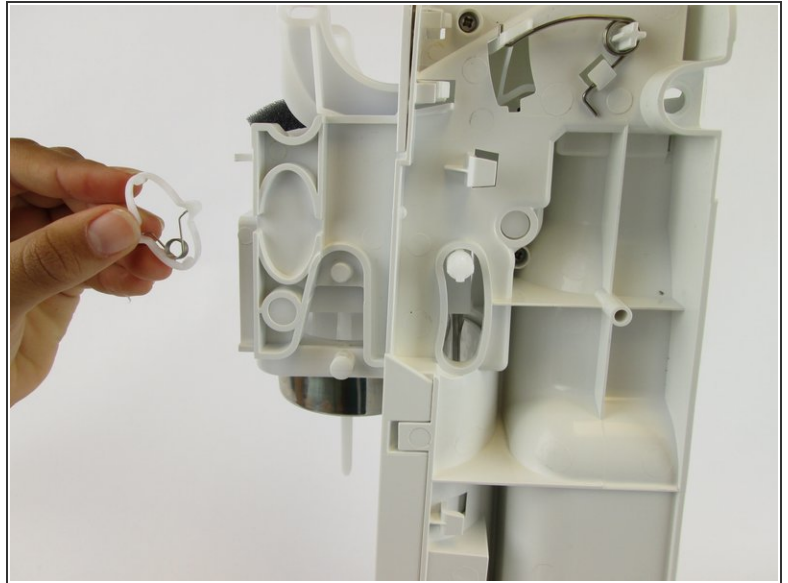
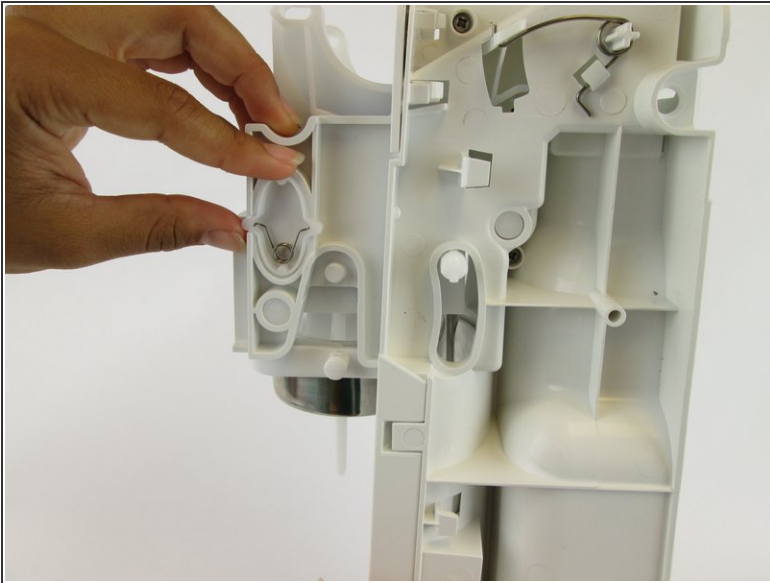
## Step 10



- Remove the plastic piece, located near the front of the carbonating block, from both sides of the device using a plastic opening tool or nylon spudger.

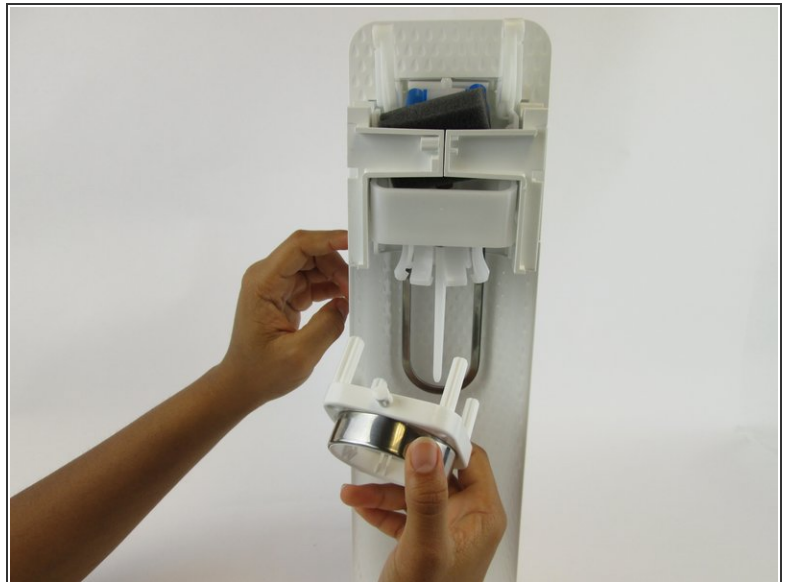
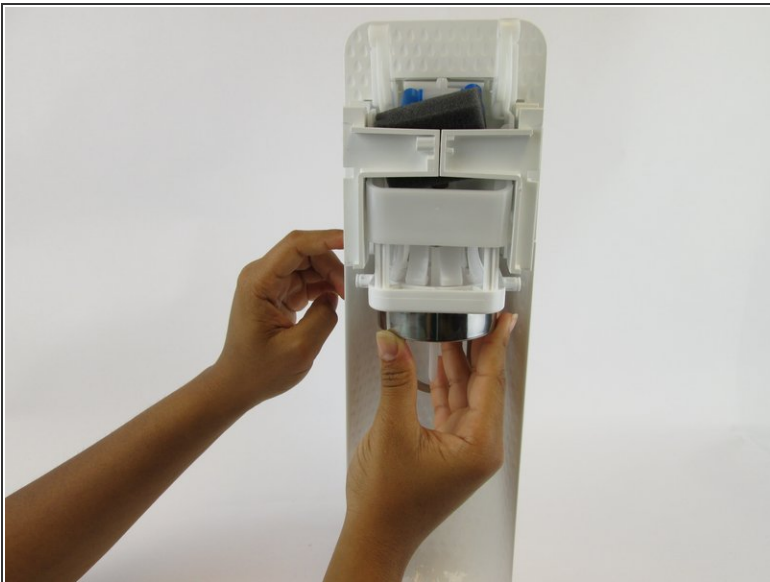


## Step 11



- Remove the plastic oval and the spring within it.

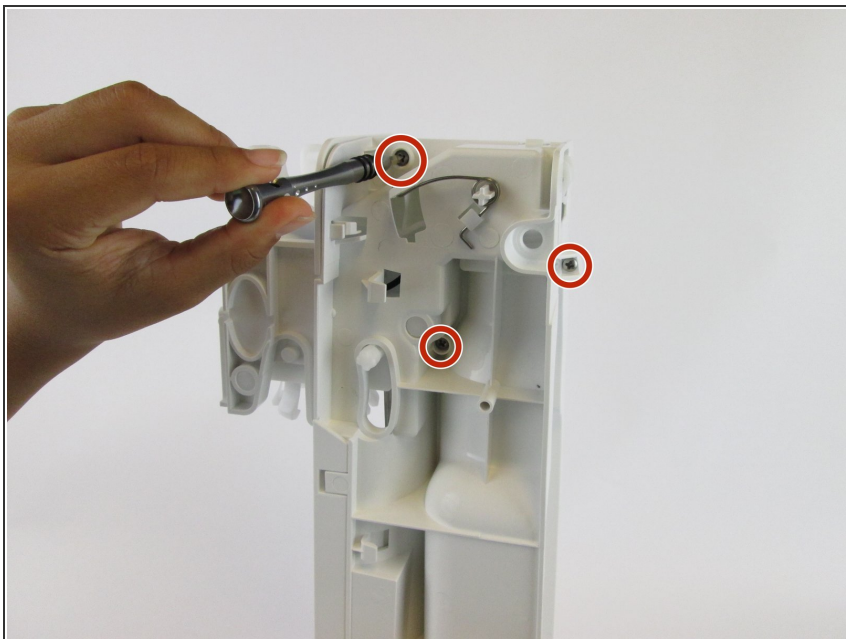
## Step 12



- Pull the loader tab cover down and away from the rest of the carbonating block.

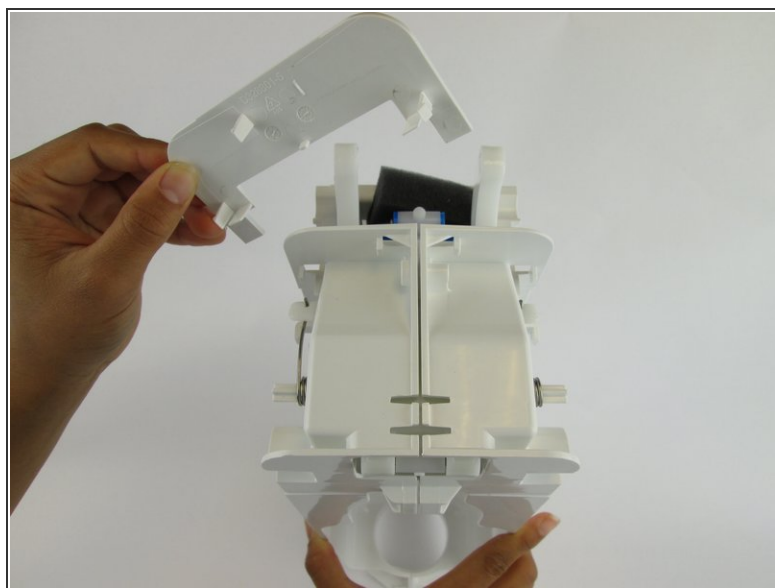
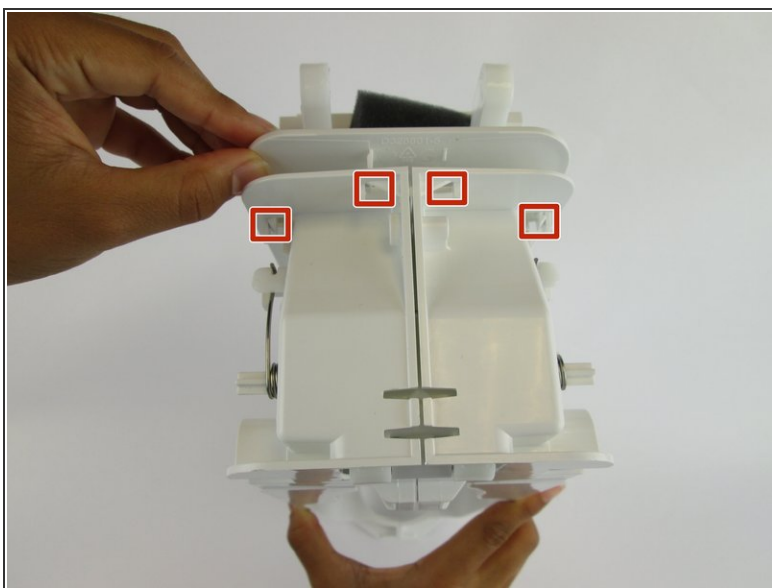


## Step 13



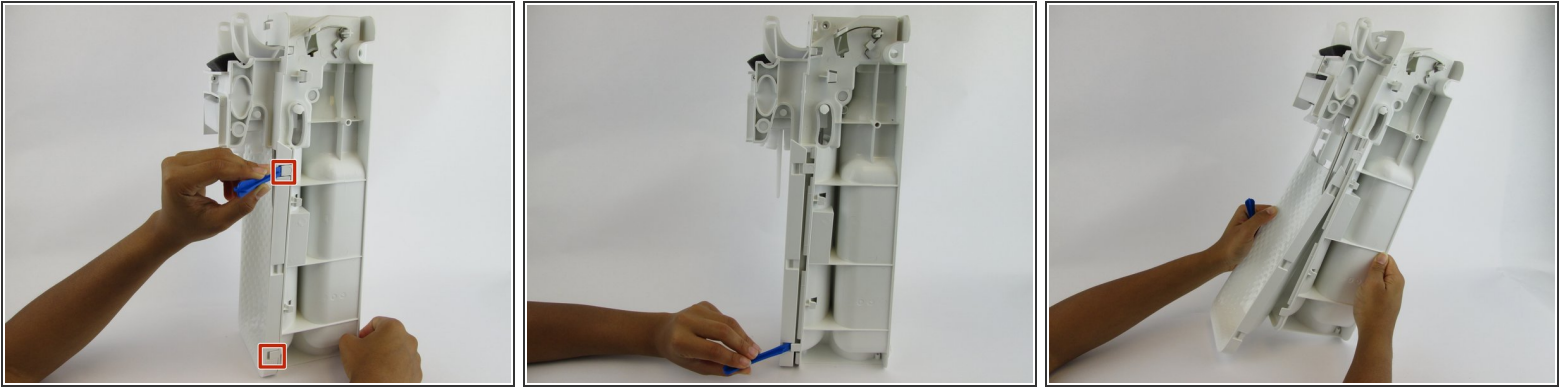
- Remove the three 17.9 mm screws located on the right side.
- ⓘ These screws may be difficult to access.

## Step 14



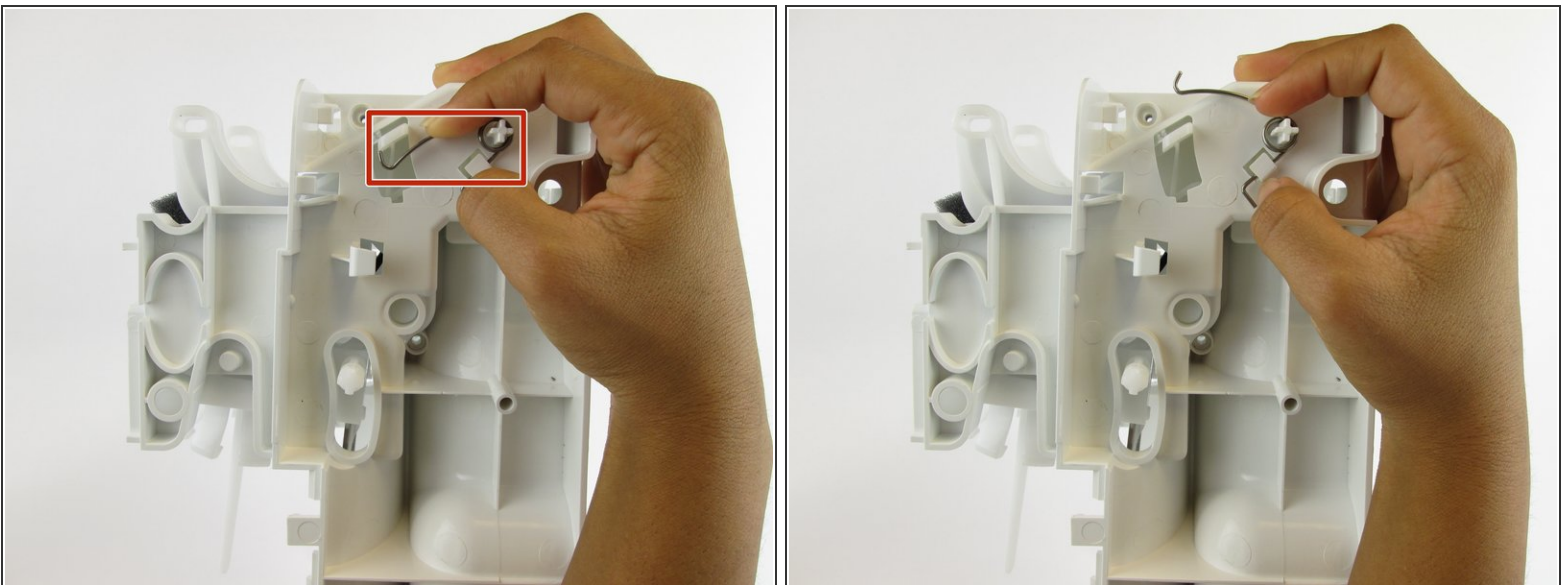
- Unhook the four clips on the top of the carbonating block and remove the plastic cover.

## Step 15



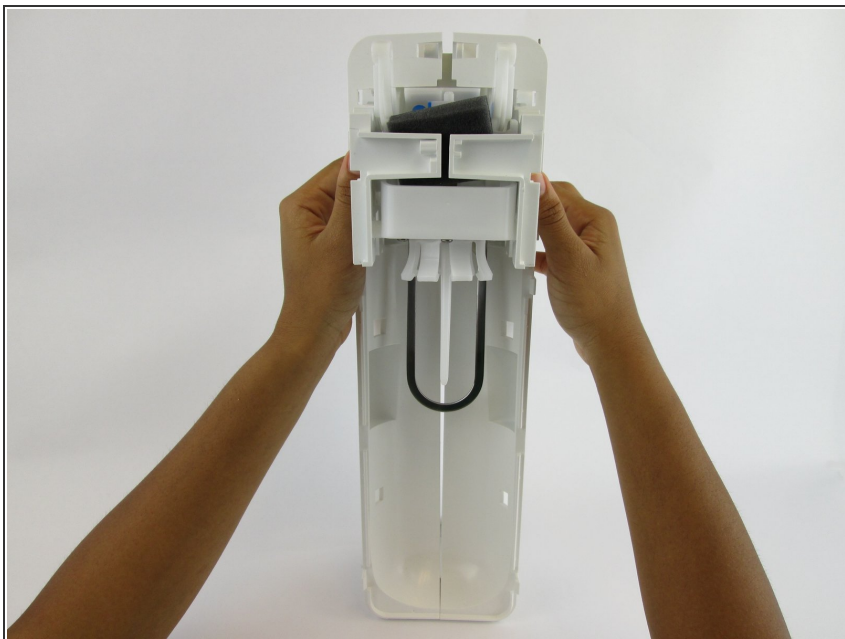
- Lift the clips located on both sides with the plastic spudger. Slide the front cover off.

## Step 16



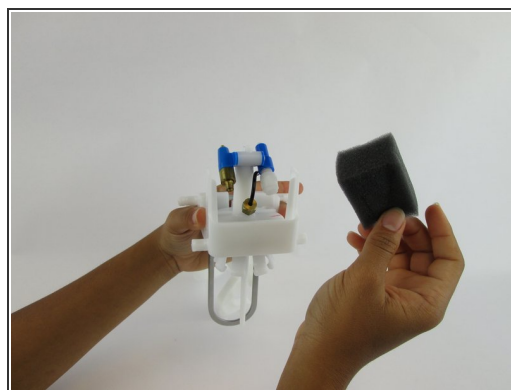
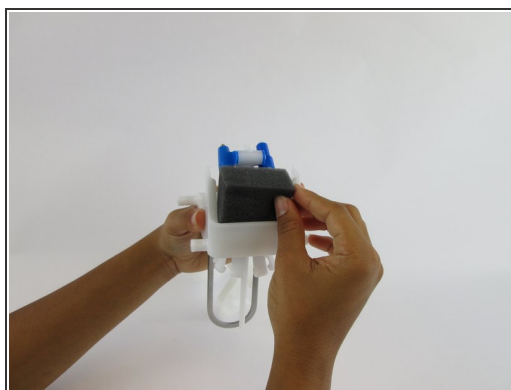
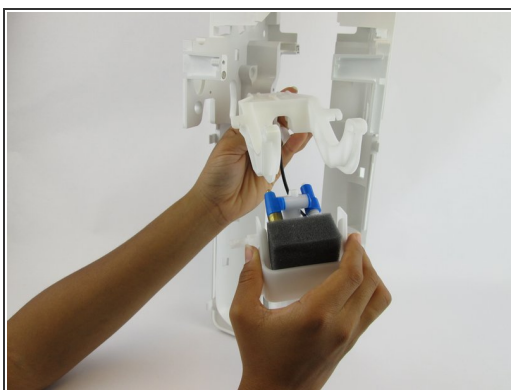
- Unhook the silver spring arms on both sides of the device by pushing down.

## Step 17



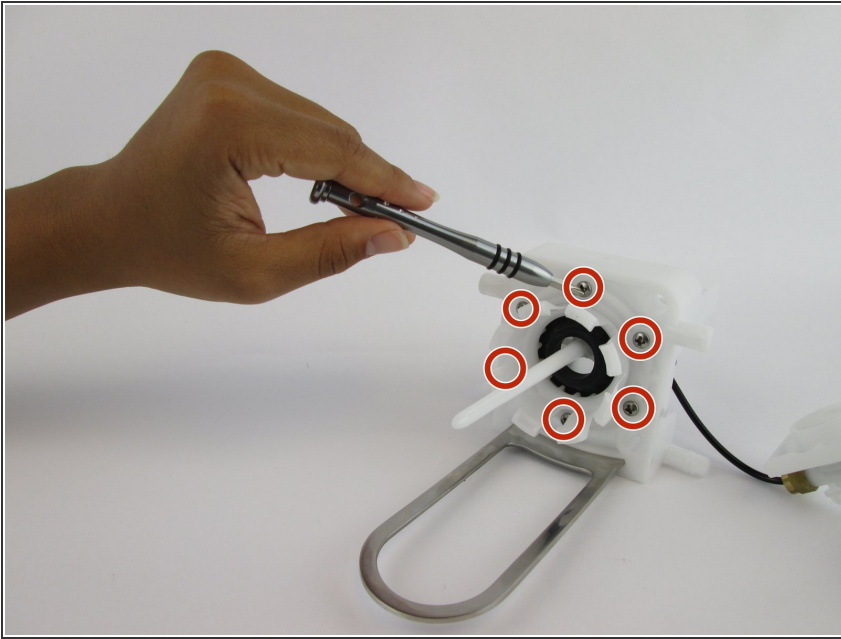
- Grip the right and left sides of the device and pull it into two identical halves.
- ⓘ Once these two pieces are apart, all remaining internal components will fall out of the device.

## Step 18



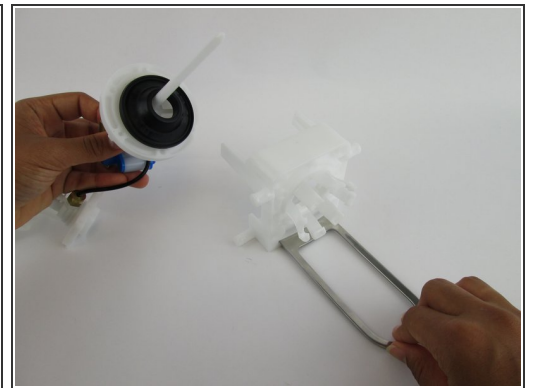
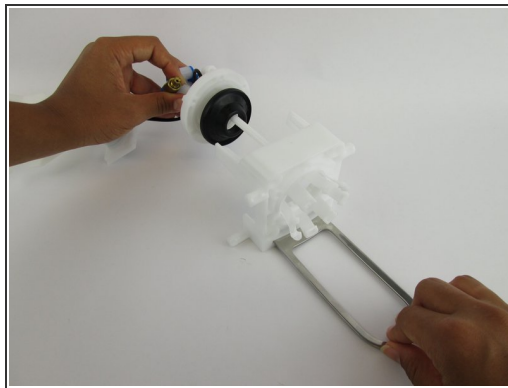
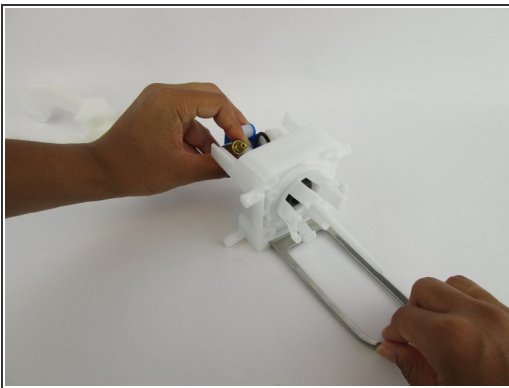
- Pull the foam pad up and remove it from the front side of the carbonation component.

## Step 19



- Remove the six 17.7 mm screws from the underside of the loader tab piece.

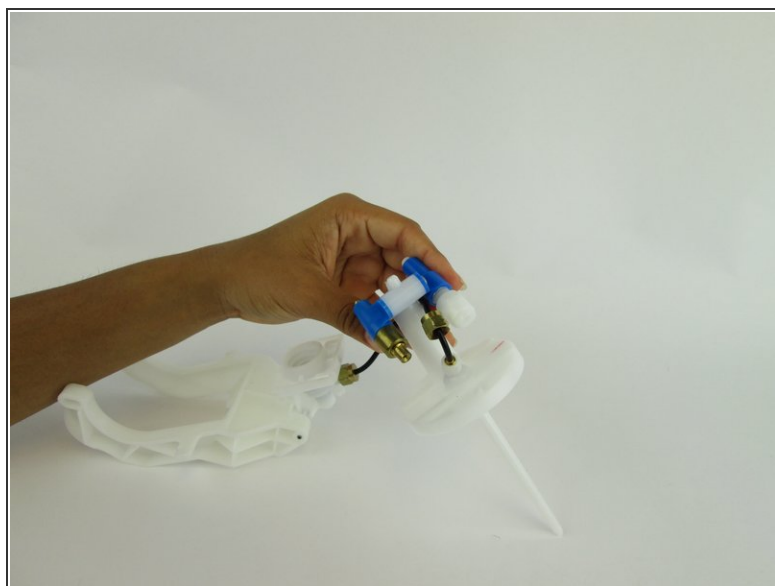
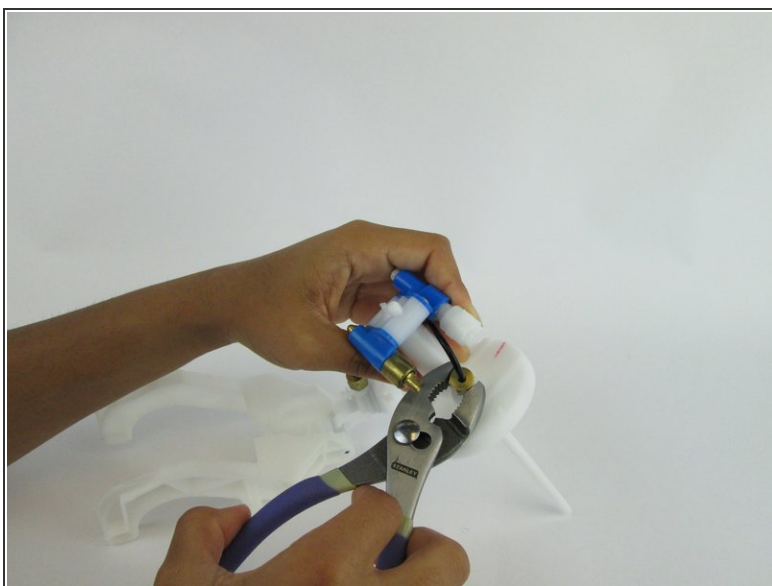
## Step 20



- Pull the loader tab out of the nozzle.

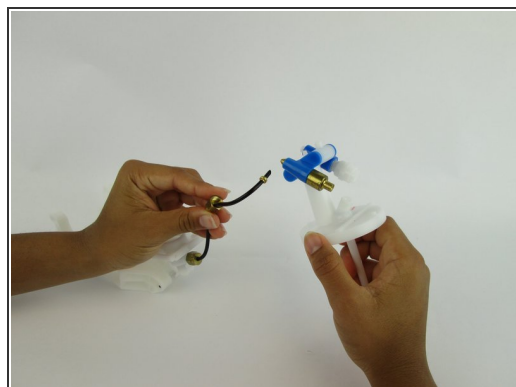


## Step 21 — Internal Carbonation Air Hose




- Use pliers to unscrew the gold cap piece from both ends of the tube

## Step 22



- Detach the hose from both sides of the carbonation system.

 You will have to use force to detach this piece.

To reassemble your device, follow these instructions in reverse order.