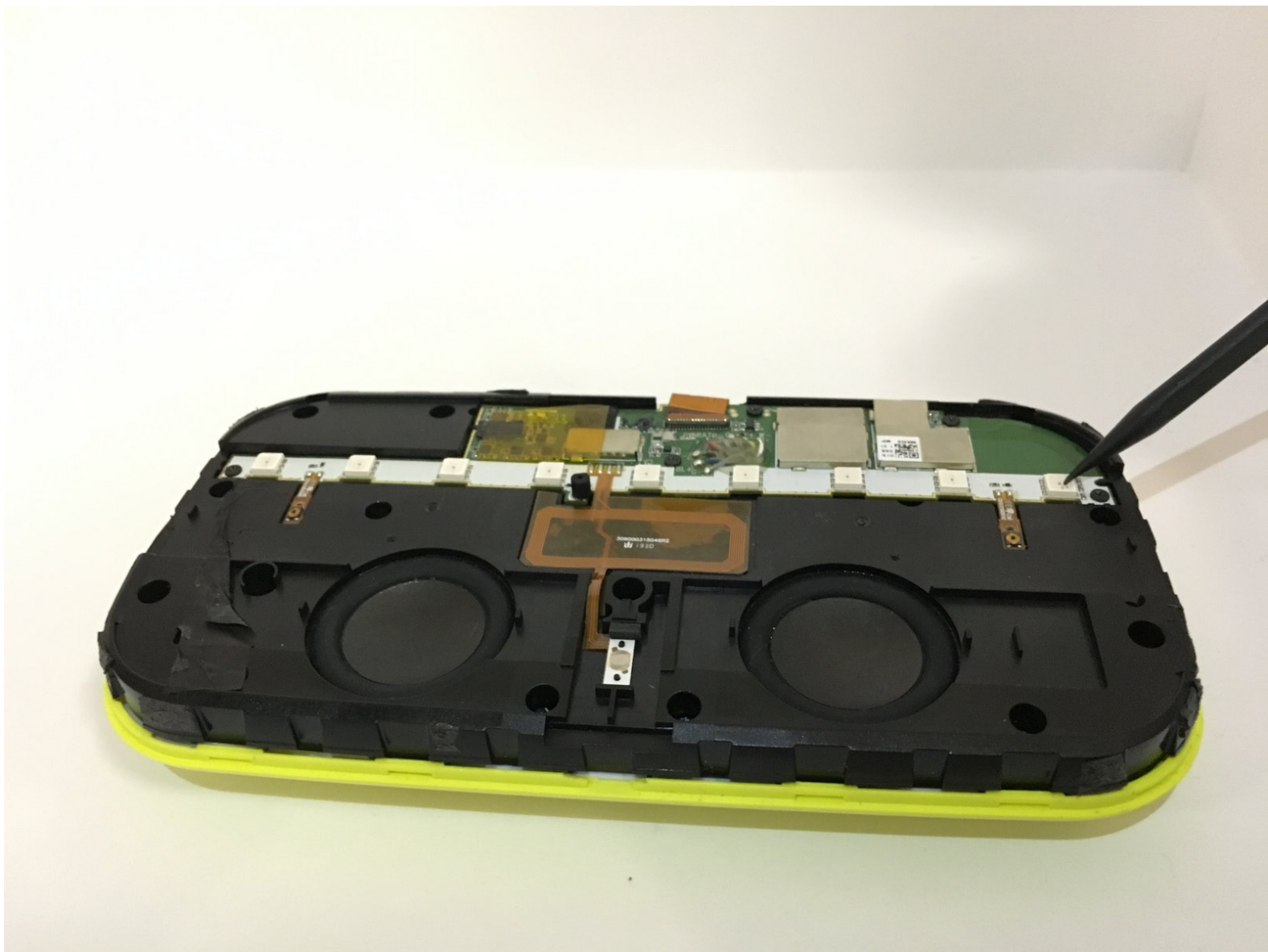




Sol Republic Deck LED Lights Replacement

This guide will show you how to disassemble the device in order to remove and replace the LED lights.

Written By: Kristina Patel



INTRODUCTION

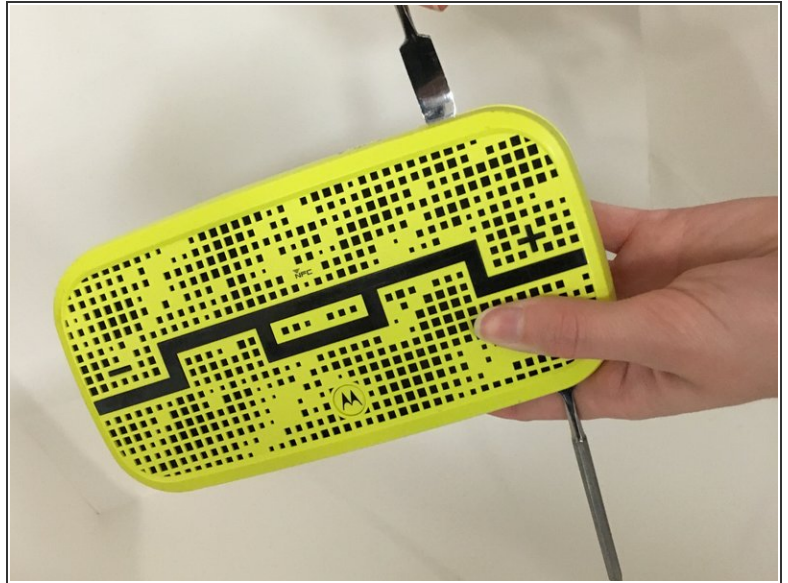
The LED lights on the speaker are what make the letters SOL light up multicolored when powering on the device. Within the device, these lights are held in place by a white strip attached to the motherboard.




TOOLS:

- [Tweezers](#) (1)
 - [Phillips #00 Screwdriver](#) (1)
 - [Spudger](#) (1)
-

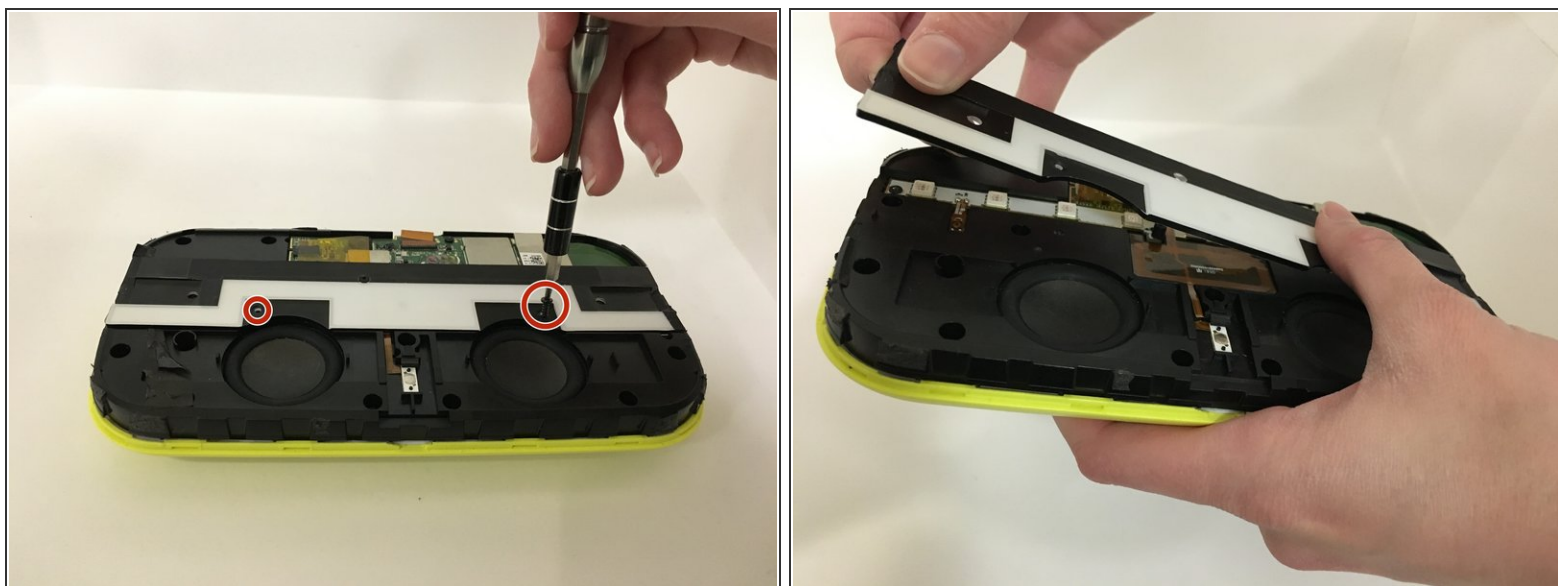
Step 1 — LED Lights



 When working with electronics, it's important to choose a tool that's ESD-safe to avoid accidental damage to the device. The regular black nylon spudger or a plastic opening tool should be used whenever possible.

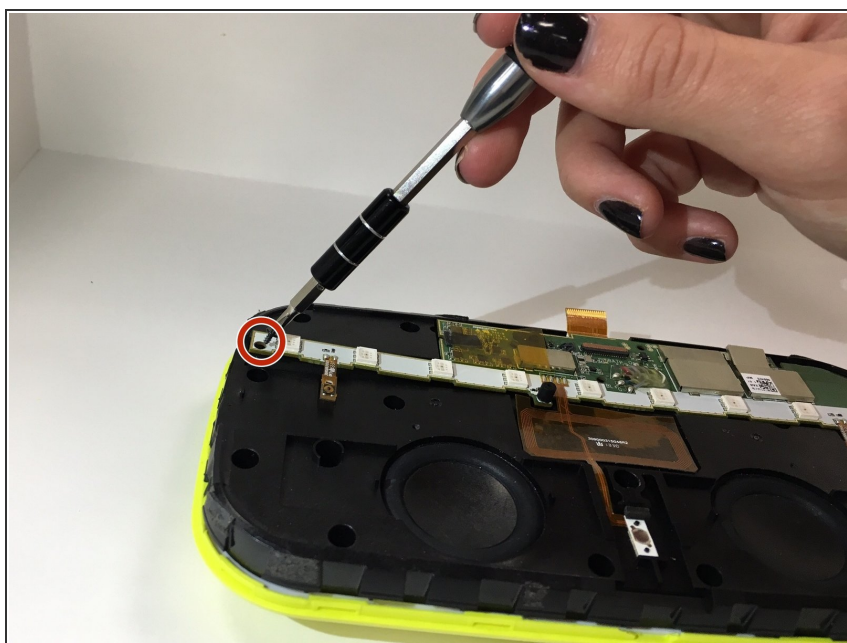
- Insert the tip of a plastic opening tool or spudger into the the middle groove along the edge of the device.
- Insert another opening tool into the groove to hold the front plate up as you separate both plates on all sides. Use multiple opening tools to keep plates separated if necessary.

Step 2



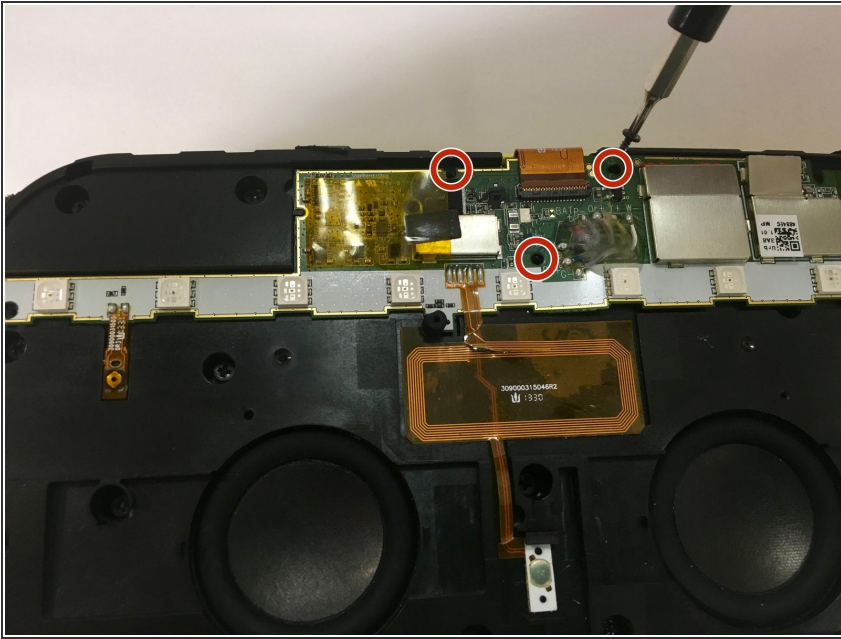
- Using a PH00 screwbit, unscrew the two three-tenth cm screws and remove them.
- Once the screws have been removed, lift the SOL plate revealing the LED Light strip.

Step 3



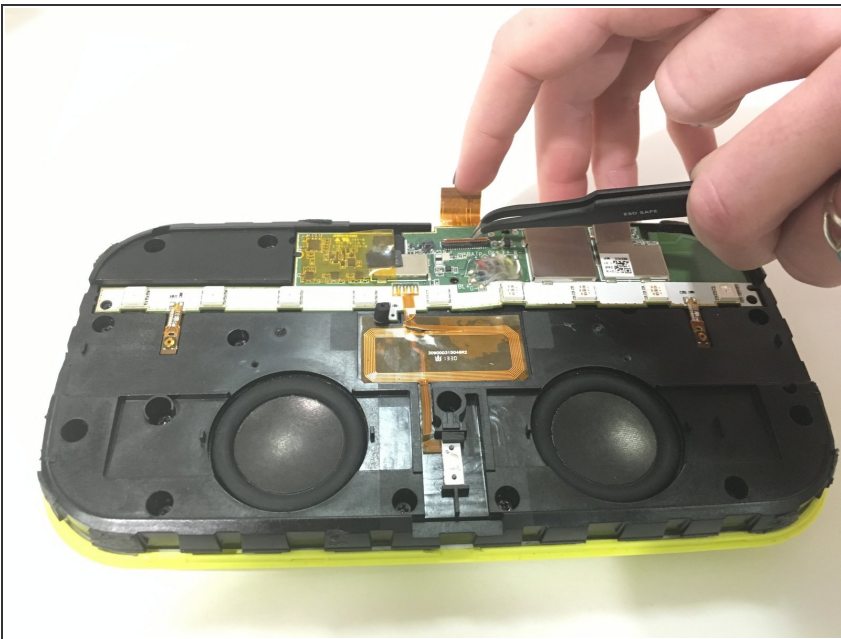
- Using a PH00 screwbit, unscrew the two three-tenth screws that hold down the LED light strip at both ends.

Step 4



- Using a PH00 screw bit, unscrew the three screws that hold down the motherboard.

Step 5



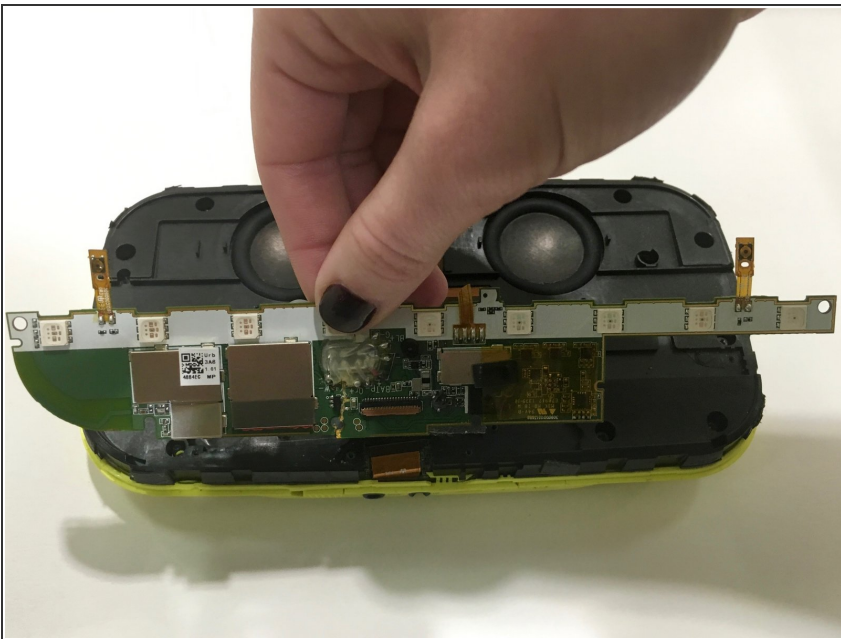
- Use tweezers and fingers to lift tab and ZIF (zero insertion force) connector.

Step 6



- Once unscrewed, the LED light requiring repair can be accessed by lifting up the entire LED light strip with tweezers.

Step 7



- ⚠ If you pull the LED light plate too hard, then the motherboard will snap in half.
- Lift the LED light plate attached to the motherboard off.

To reassemble your device, follow these instructions in reverse order.