



SolaDyne LED Lantern Battery Replacement

Replace the Battery in your SolaDyne LED Lantern.

Written By: Nicholas Greer



INTRODUCTION

Use this guide to replace the battery in your lantern so that it can hold a charge and be illuminated.



TOOLS:

- [Phillips #0 Screwdriver](#) (1)
- [Phillips #1 Screwdriver](#) (1)



PARTS:

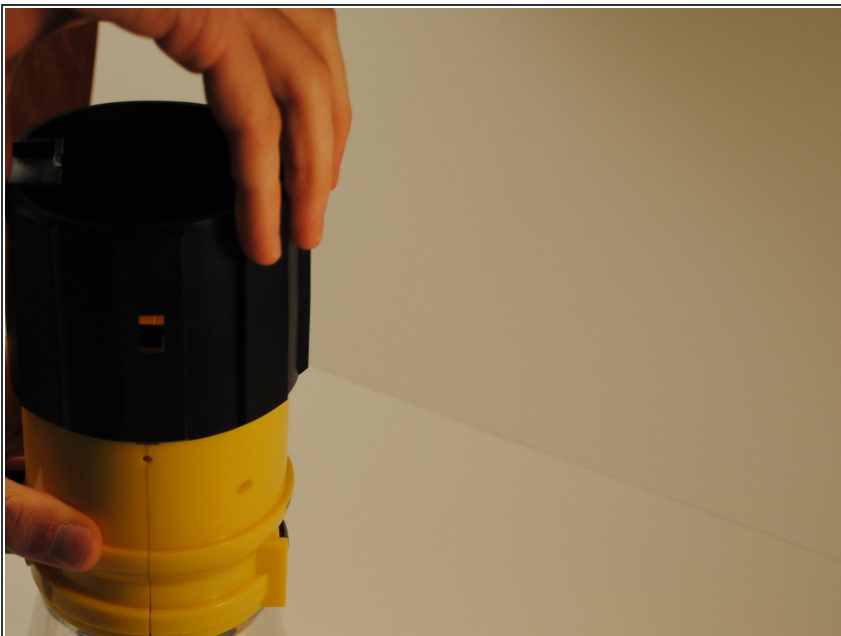
- [Battery](#) (1)

Step 1 — Battery



- Flip lantern upside down and unscrew the 4 phillips head screws on the base and remove the base plate.
- ☑ Carefully set screws and base plate aside for reassembly.

Step 2



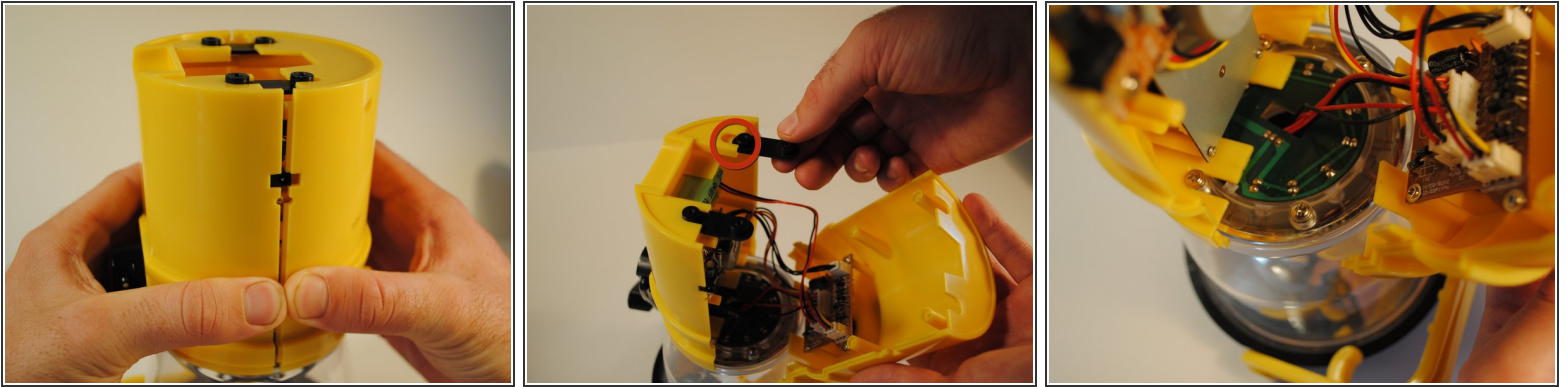
- Slide the black rubber sleeve off of the outside of the body of the lantern away from the LED globe.

Step 3



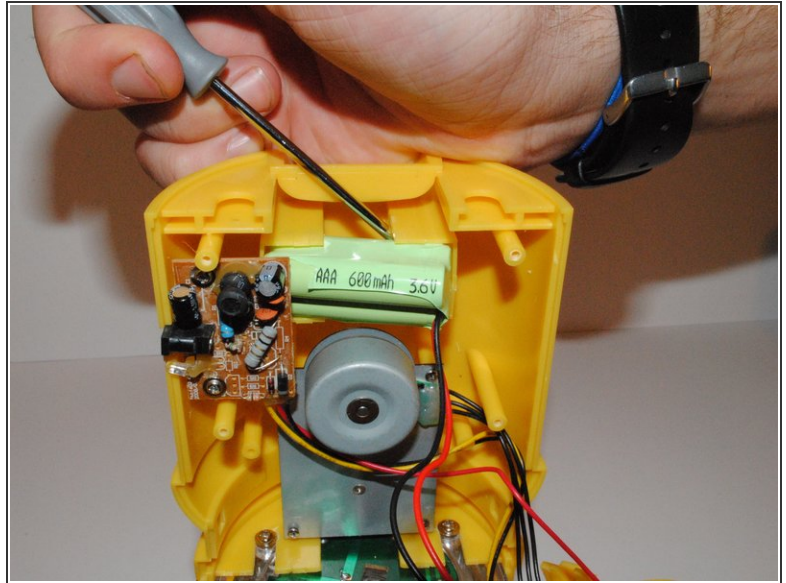
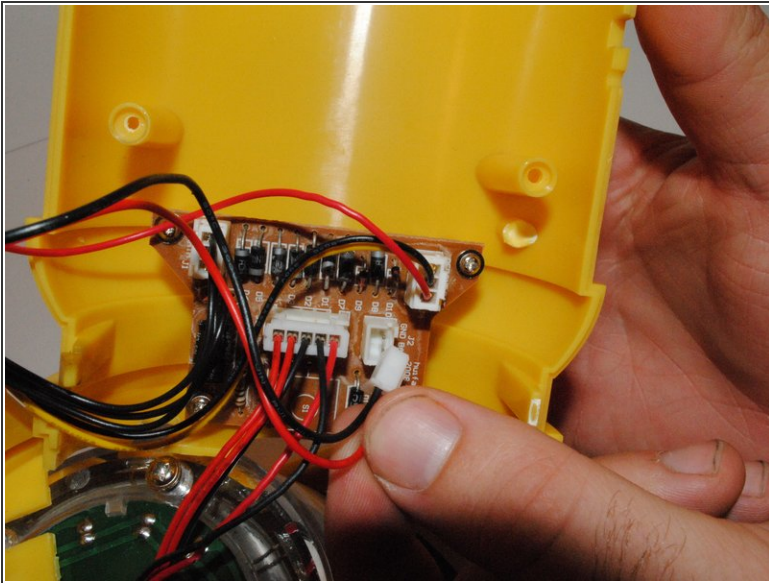
- Remove 4 Phillips head screws from the front of the lantern body below the power button.
- ☑ Set aside screws for reassembly.



Step 4



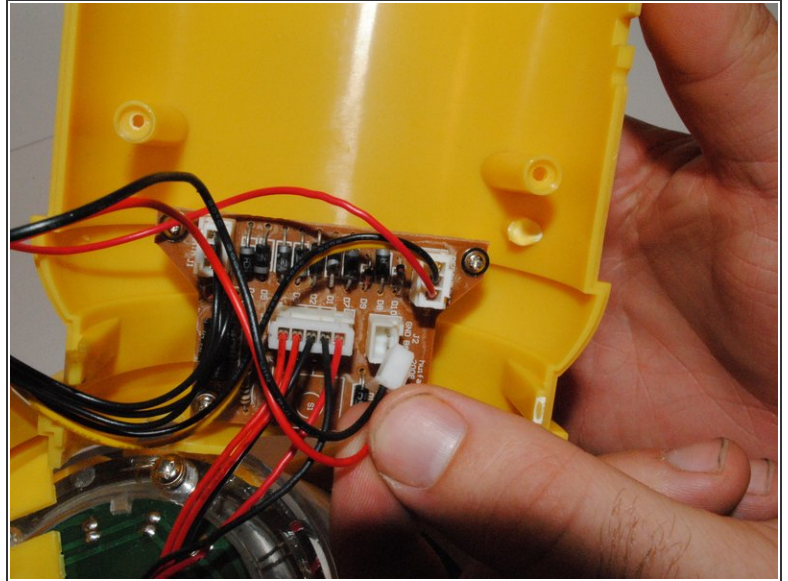
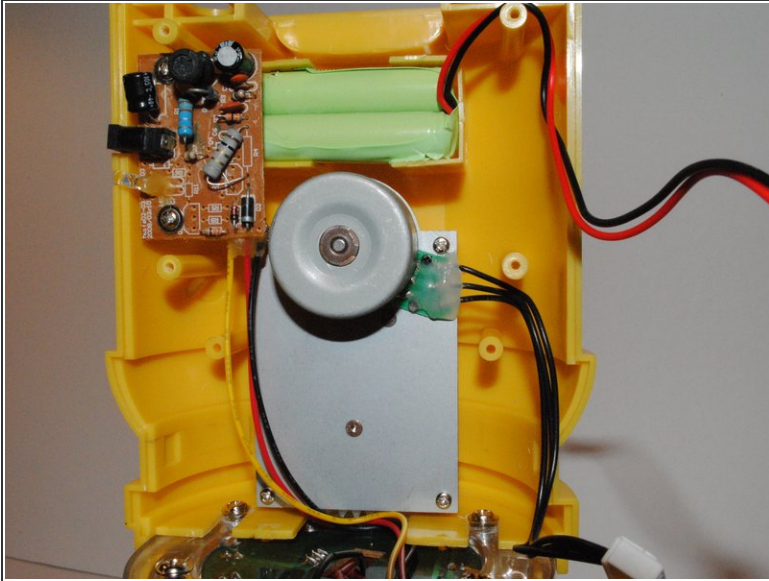
- To disassemble the main body, grip the lantern so that the front half of the body with the power button on it is in your right hand and the back half with the hand crank is in your left.
 - Pinch the front half of the body on both sides with your thumb and index finger just below the first extruding rim of the front plate while simultaneously pulling the back half away. This may take some effort to do.
- ⚠ Be careful to not pull the halves of the body away from each other too hard because the internal wires connecting internal components may break.
- ✦ Take note to remove and set aside black screw mounts located in between the halves at the bottom of the lantern.
 - ✦ When putting the front and back plates together during reassembly, make sure to slide the extruding screws from the base of the globe through the corresponding grooves cut into the top of the front and back plates of the main body.

Step 5



-  The main power board is located directly behind the power button, screwed into the front plate.
- Locate the green rechargeable battery on the back plate. It is press fit into the housing near the bottom of the back half.
 - Trace the red and black wires from the battery to the white clip connecting them to the main power board. Pull out the white clip from the socket on the main board. This will sever the electrical connection between the battery and the rest of the lantern.
 - Now that the wires are removed, remove battery from housing on the back plate.
-  Do not remove battery by pulling on the red and black wires. If necessary, use a screwdriver as a lever-arm to pry the battery from its housing.

Step 6



- Insert new battery into the housing of the old battery with wires facing away from the DC-in board.
- Attach the wires from the new battery to the correct area of the main board where the old wires were removed.
- ⓘ Make sure grooves on the clip holding the red and black wires together align with the pins in the socket on the main board before inserting.

To reassemble your device, follow these instructions in reverse order.