



SolaDyne LED Lantern Hand Crank Replacement

Replacing the hand crank to be able to use it to power the lantern.

Written By: Nicholas Greer





TOOLS:

- [Phillips #0 Screwdriver](#) (1)
- [Phillips #1 Screwdriver](#) (1)



PARTS:

- [New Crank Dynamo](#) (1)

Step 1 — Hand Crank



- Flip lantern upside down and unscrew the 4 phillips head screws on the base and remove the base plate.
- ☑ Carefully set screws and base plate aside for reassembly.

Step 2



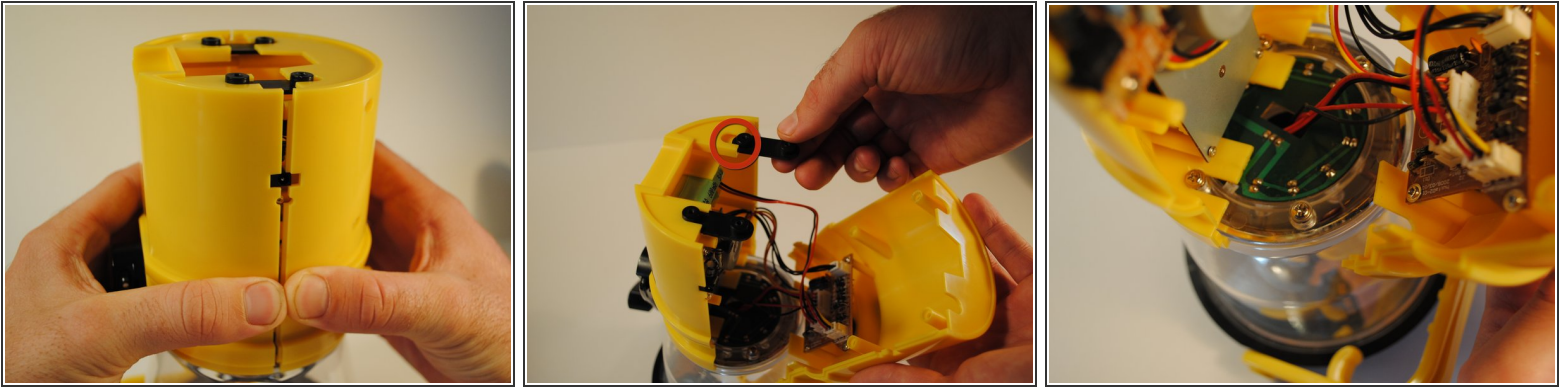
- Slide the black rubber sleeve off of the outside of the body of the lantern away from the LED globe.

Step 3



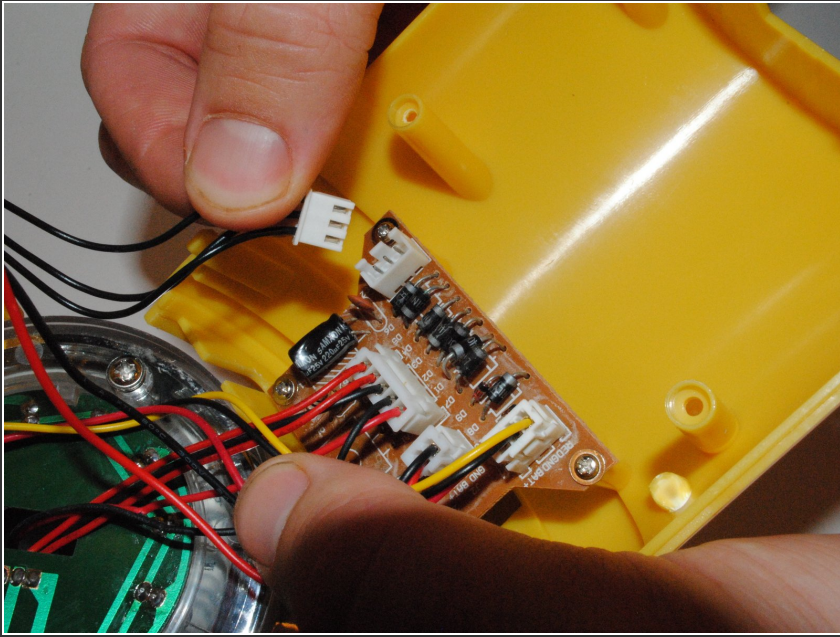
- Remove 4 Phillips head screws from the front of the lantern body below the power button.
- ☑ Set aside screws for reassembly.

Step 4



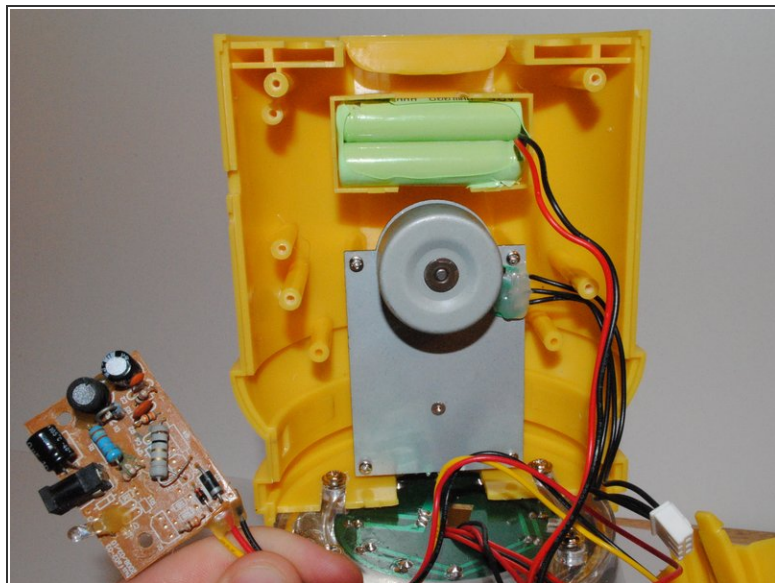
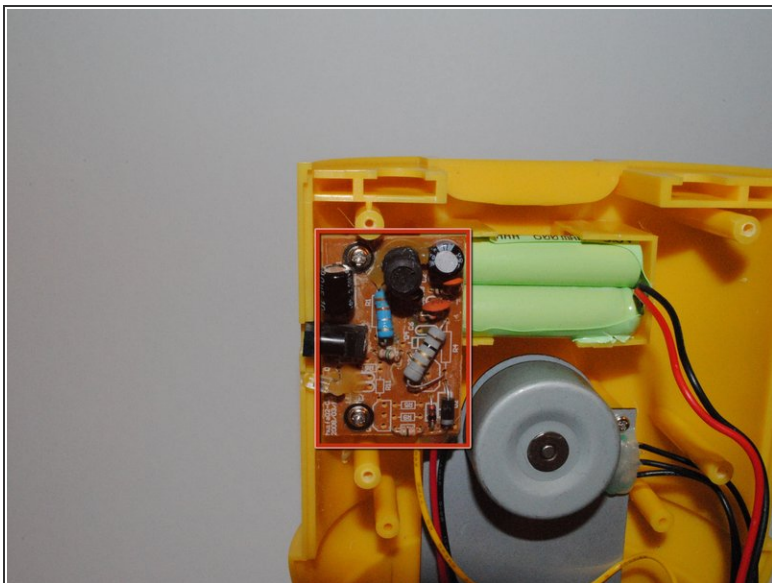
- To disassemble the main body, grip the lantern so that the front half of the body with the power button on it is in your right hand and the back half with the hand crank is in your left.
 - Pinch the front half of the body on both sides with your thumb and index finger just below the first extruding rim of the front plate while simultaneously pulling the back half away. This may take some effort to do.
- ⚠ Be careful to not pull the halves of the body away from each other too hard because the internal wires connecting internal components may break.
- ✦ Take note to remove and set aside black screw mounts located in between the halves at the bottom of the lantern.
 - ✦ When putting the front and back plates together during reassembly, make sure to slide the extruding screws from the base of the globe through the corresponding grooves cut into the top of the front and back plates of the main body.

Step 5



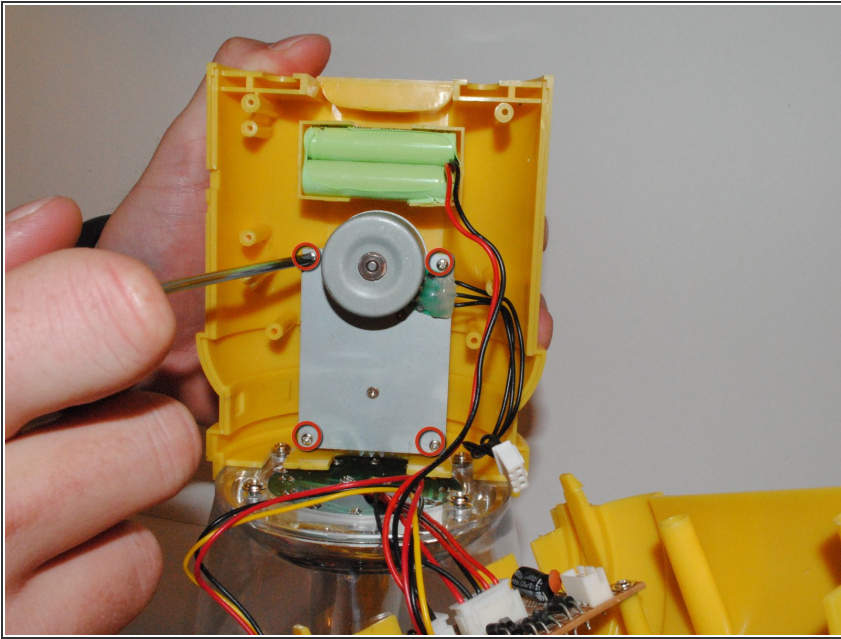
- ① The main power board is located directly behind the power button, screwed into the front plate.
- Locate the crank dynamo component. It is mounted on the back plate directly above the battery.
- Trace the wires from the dynamo component to the main power board. Pull out the white clip from the socket on the main board. This will sever the electrical connection between the crank dynamo and the rest of the lantern.

Step 6



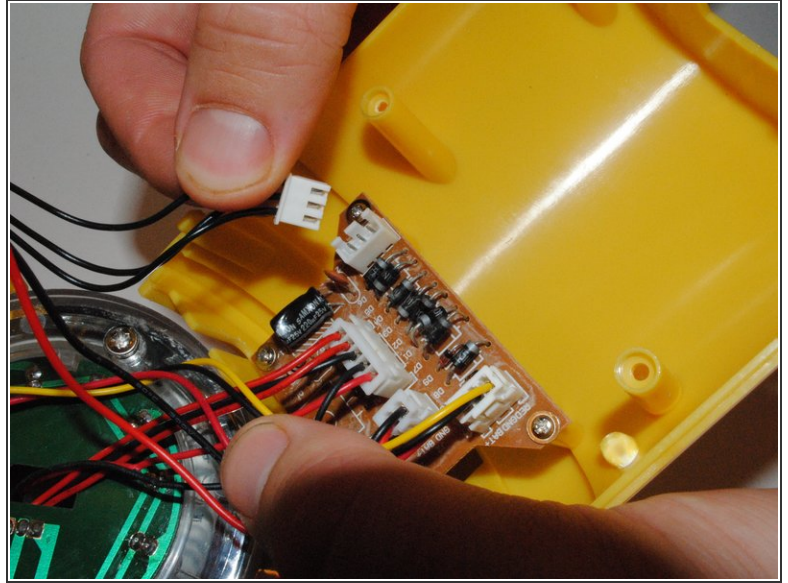
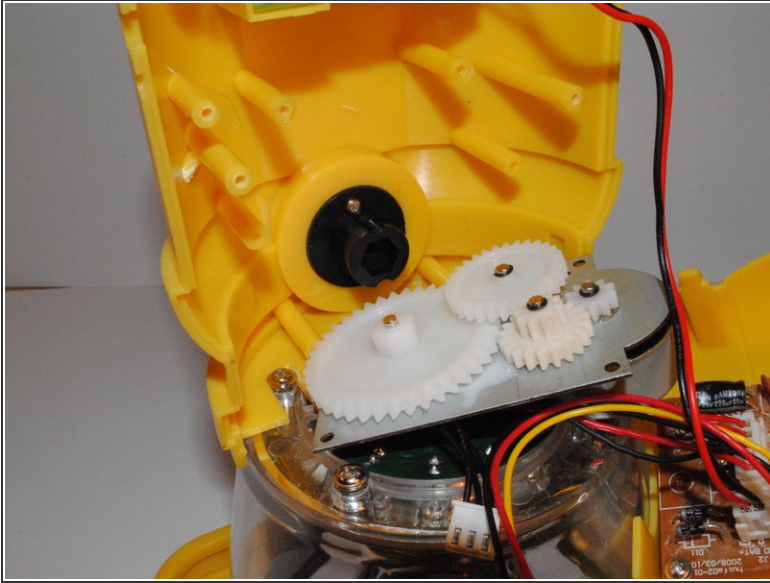
- Locate the DC-in board. It is mounted onto the back plate slightly covering the bottom right corner of the crank dynamo.
- Remove the two screws mounting the DC-in board.
- ☑ Set screws aside for reassembly.
- Move the DC-in chip out of the way in order to access the crank dynamo.

Step 7



- Unscrew the four screws mounting the crank dynamo component to the back plate.
- Remove the crank dynamo from the lantern.

Step 8



- Place new crank dynamo where the old one was previously housed on the back plate. Make sure to align screw holes on the dynamo to those on plate.
- ⓘ Take note of the hexagonal key that transfers motion from the crank arm to the dynamo must be aligned with the corresponding hexagonal slot on dynamo.
- Replace the four screws holding the dynamo in place.
- Attach the wires from the new crank dynamo to the correct area of the main board where the old wires were removed.
- ⓘ Make sure grooves on the clip holding the red and black wires together align with the pins in the socket on the main board before inserting.

To reassemble your device, follow these instructions in reverse order.