



SolaDyne LED Lantern Main Power Board Replacement

Replace the main power board of your SolaDyne LED Lantern.

Written By: Nicholas Greer



INTRODUCTION

Replace the main power board that connects all the components of the lantern.



TOOLS:

- [Phillips #0 Screwdriver](#) (1)
- [Phillips #1 Screwdriver](#) (1)



PARTS:

- [Main Power Board for SolaDyne LED Lantern](#) (1)

Step 1 — Main Power Board



- Flip the lantern upside down.
 - Remove the four Phillips screws from the base.
 - Remove the base.
- ☑ Carefully set screws and base plate aside for reassembly.

Step 2



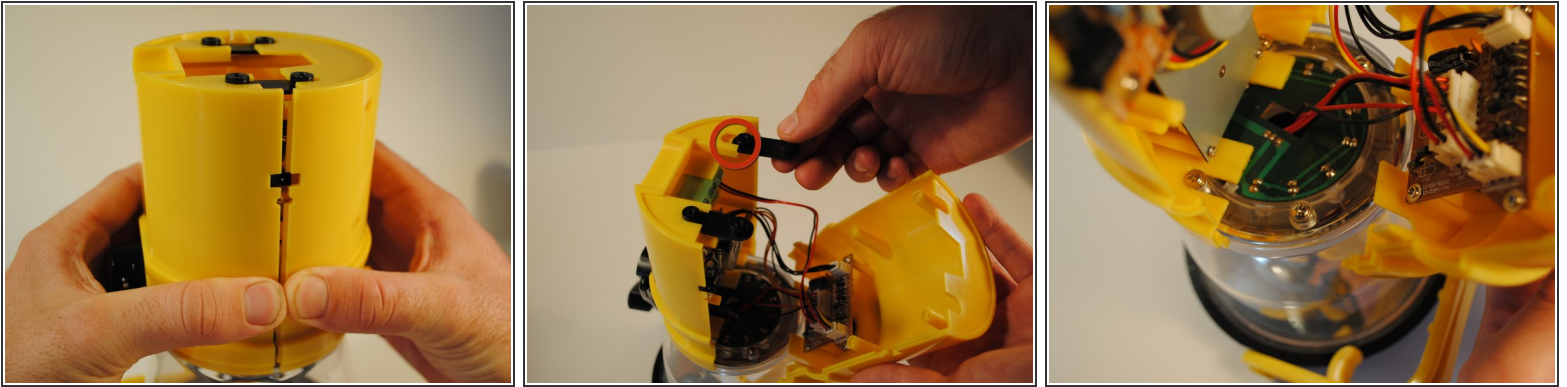
- Slide the black rubber sleeve off of the outside of the body of the lantern away from the LED globe.




Step 3



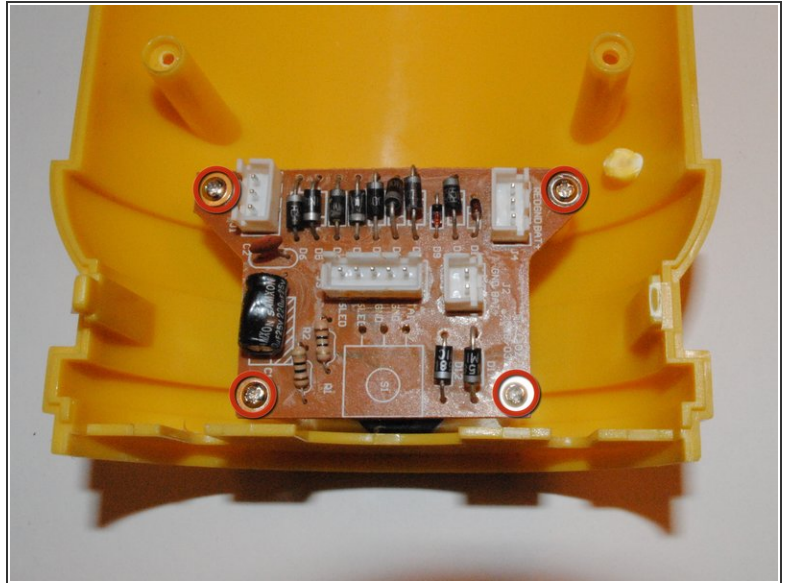
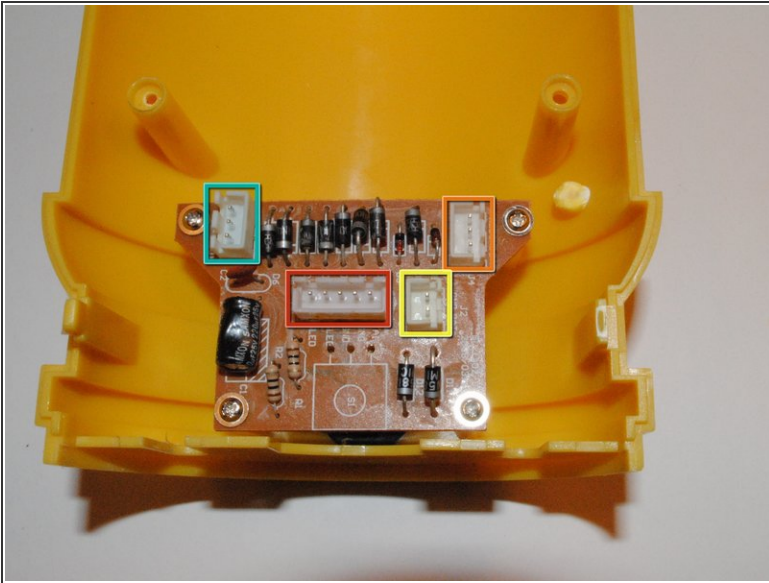
- Remove 4 Phillips head screws from the front of the lantern body below the power button.
- ☑ Set aside screws for reassembly.

Step 4



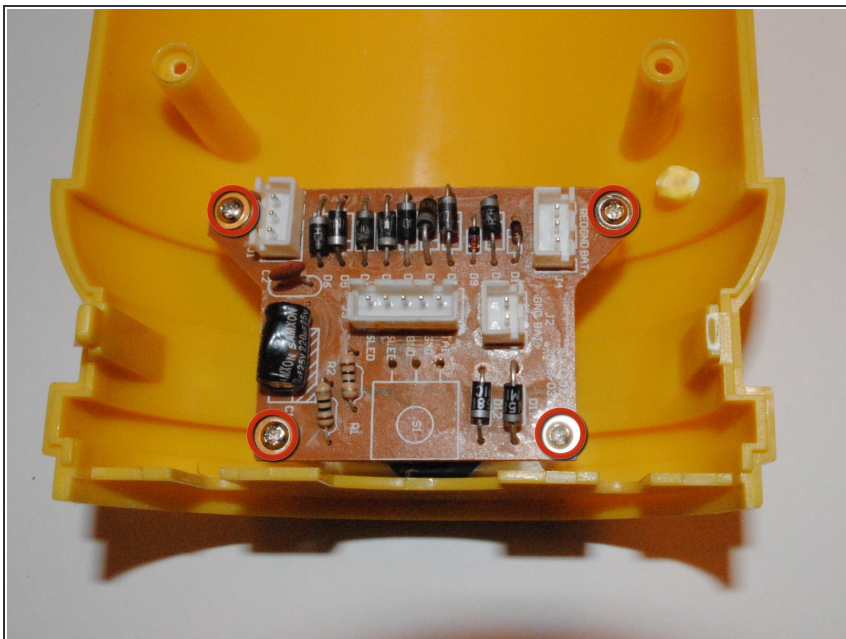
- To disassemble the main body, grip the lantern so that the front half of the body with the power button on it is in your right hand and the back half with the hand crank is in your left.
 - Pinch the front half of the body on both sides with your thumb and index finger just below the first extruding rim of the front plate while simultaneously pulling the back half away. This may take some effort to do.
-  Be careful to not pull the halves of the body away from each other too hard because the internal wires connecting internal components may break.
-  Take note to remove and set aside black screw mounts located in between the halves at the bottom of the lantern.
 -  When putting the front and back plates together during reassembly, make sure to slide the extruding screws from the base of the globe through the corresponding grooves cut into the top of the front and back plates of the main body.

Step 5



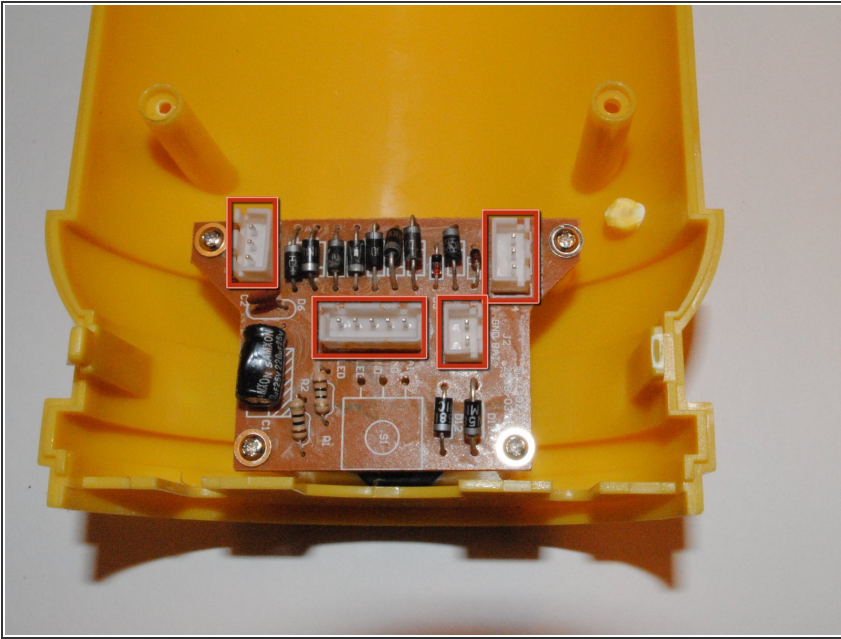
- i The main power board is located directly behind the power button, screwed into the front plate.
- Disconnect all the wires from the main power board by removing the white clips from their corresponding sockets mounted on the board.
- ★ For reference to replace wires, see labeled picture of main board.
 - LED.
 - DC-in board.
 - Battery.
 - Crank.
- With the Philips #0 screwdriver, unscrew the four screws mounting the board to the front plate. Remove the board from the front plate. Set aside screws for reassembly.

Step 6



- Place the new main board so that the screw holes on the front plate line up with the holes on the board.
- ⓘ Make sure the main power button, located behind the main board, is also lined up so that it touches the button on the new main board.
- Replace screws that were set aside in the previous step.

Step 7



- Replace all the wires from components into the new main board. Trace the wire from each component and insert where specified on the diagram.
- ⓘ Make sure grooves on the clip holding the wires together for each component align with the pins in the socket on the main board before inserting.

To reassemble your device, follow these instructions in reverse order.