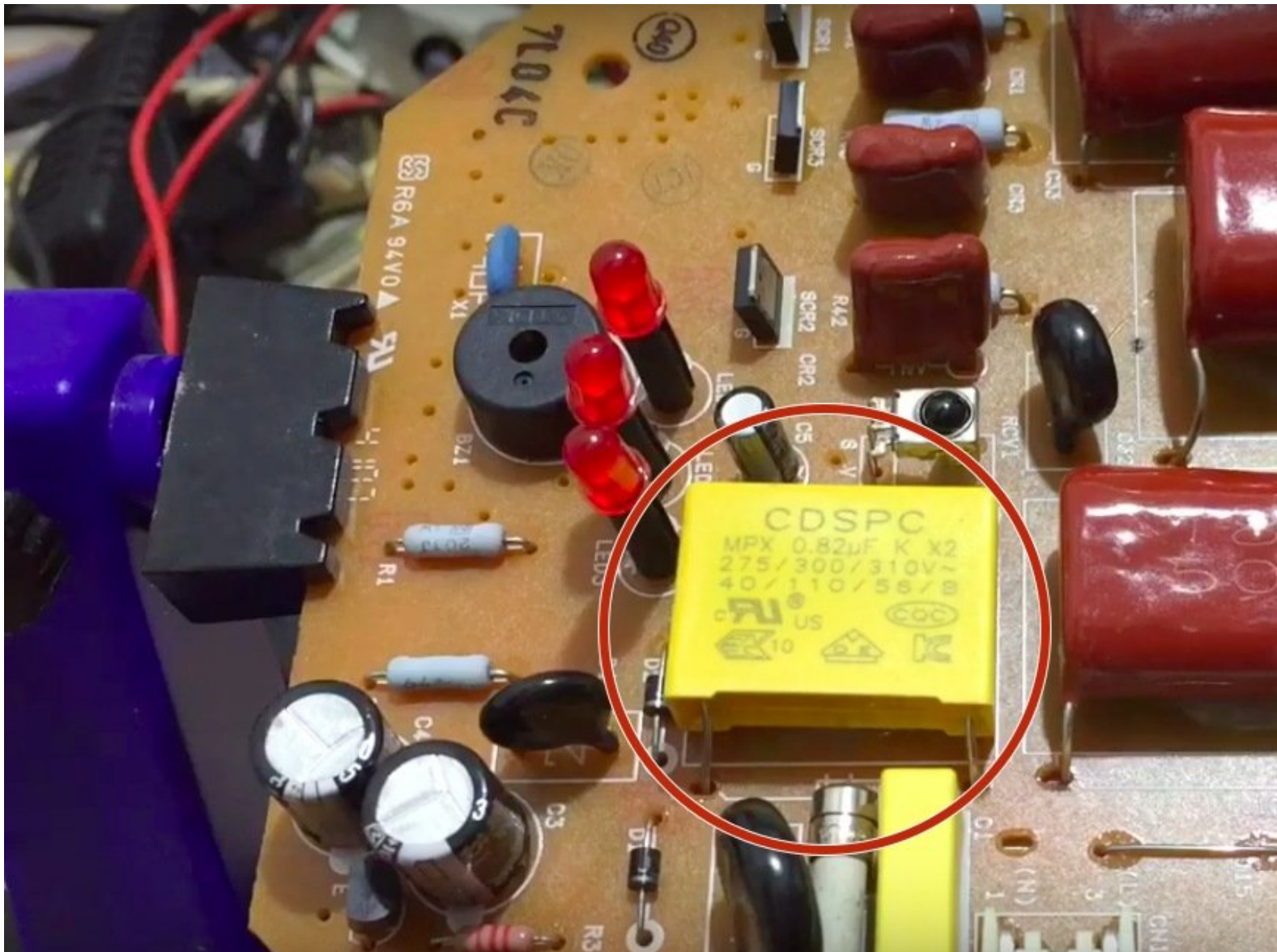




Solving slow moving ceiling fan with remote control

This video guide helps user to solve the slow moving remote controlled fan after 6-7 years using.

Written By: sengchoy liew



INTRODUCTION

If the ceiling fan comes with a remote control to switch on and off moving really slow at maximum speed. This video guide will definitely helps solving it.



TOOLS:

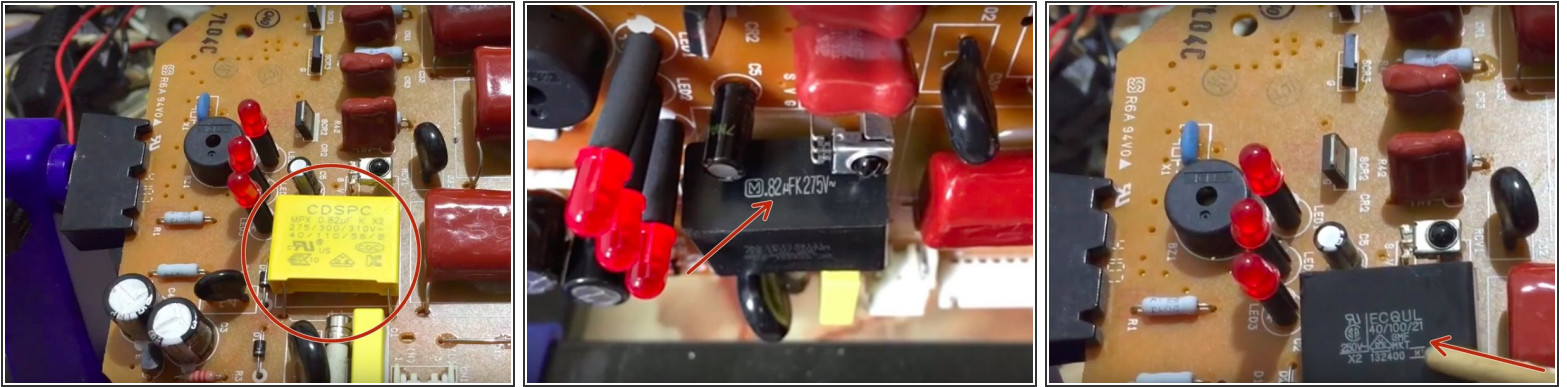
- [Circuit board holder](#) (1)
- Soldering accessories*
- [Temperature soldering station](#) (1)
 - [Flush Wire Cutters](#) (1)



PARTS:

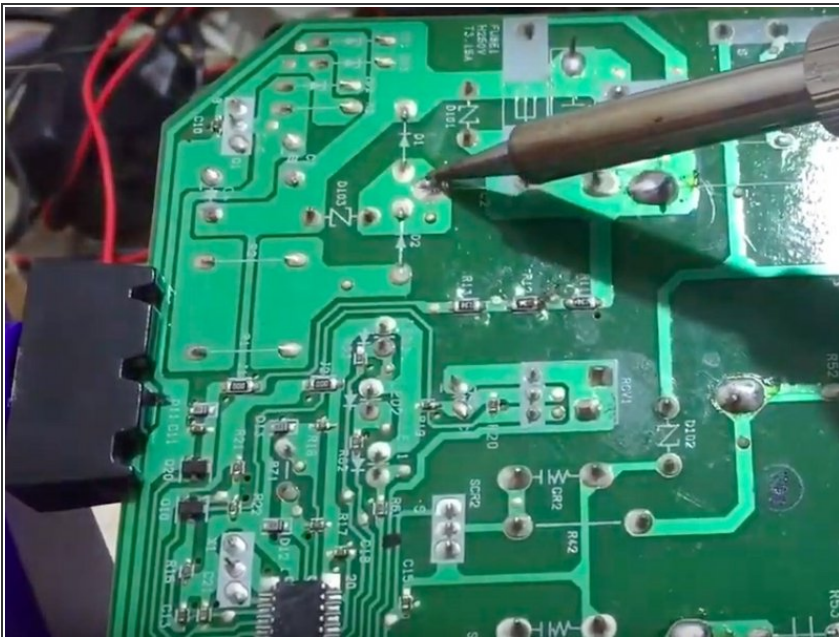
- [Capacitor 0.82UF](#) (1)

Step 1 — Capacitor (depends on brand)



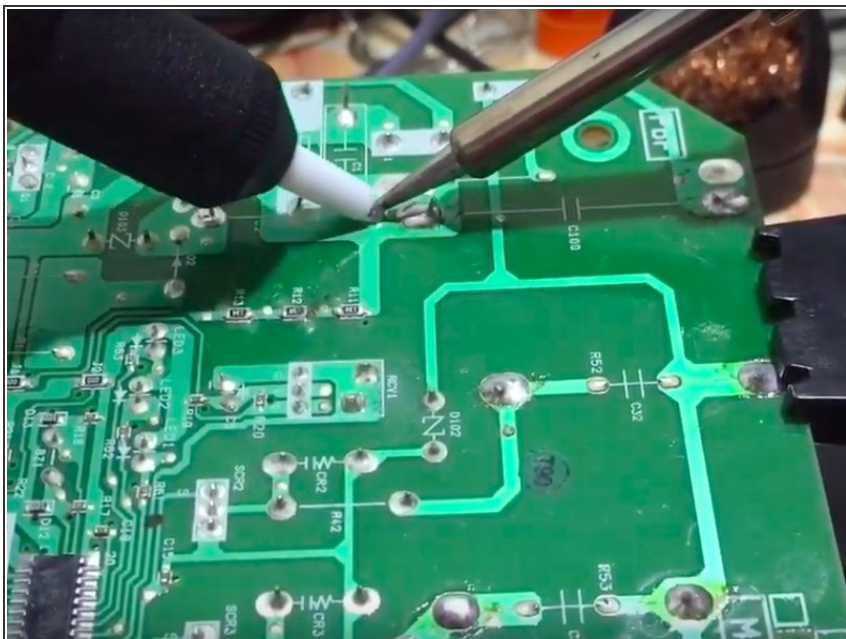
- Specification for capacitor are sometimes printed at the size. This brand uses 0.82uF 275V capacitor. Specification varies with brand.

Step 2



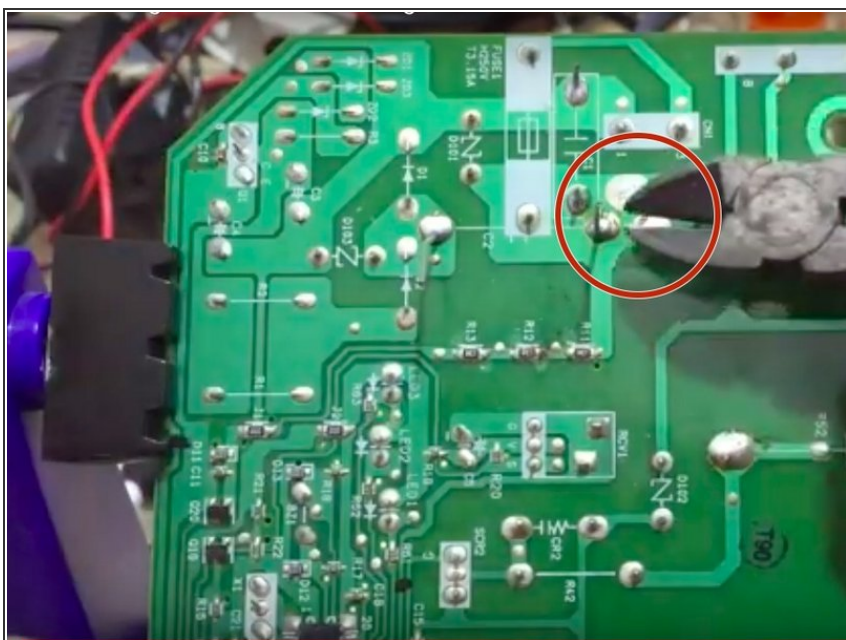
- It will be so much easier if the board can be clamp down using the board repair clamp to hold the board while desoldering the correct capacitor.

Step 3



- Simple suction pump required to remove the molten fuse.

Step 4



- Cut off the excess length using a tiny cutter after a new capacitor is being soldered onto the board.

Step 5



- Test the fan if it is moving at maximum speed after the capacitor is being replaced before assembling it.

Test the board if working before reassembly the circuit board back into the ceiling fan.