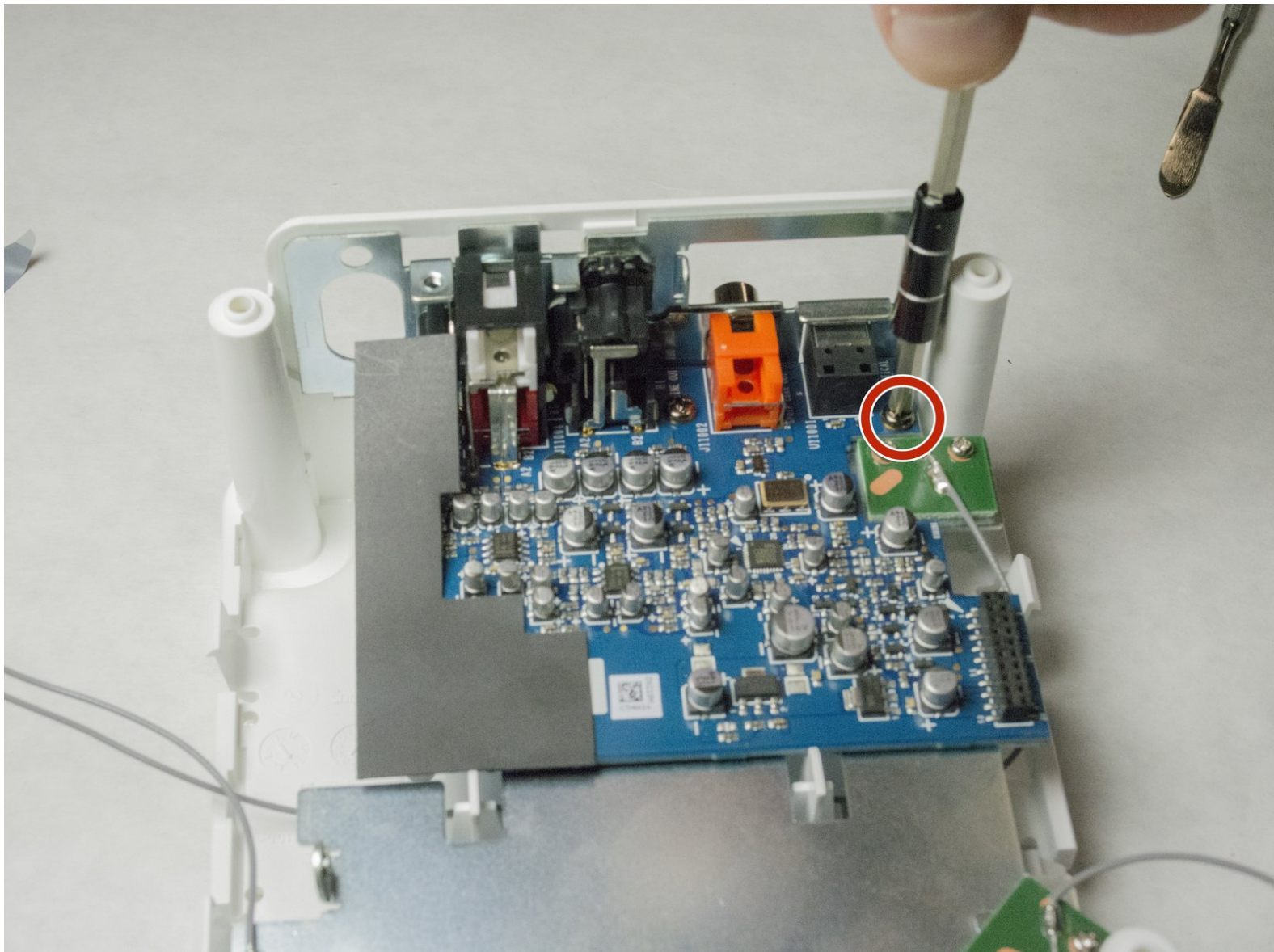




Sonos Connect Bottom Motherboard Replacement

This guide will show the necessary steps to replace the bottom motherboard.

Written By: Clark Snyder



INTRODUCTION

There are two boards for the device, a green top level and a blue lower level. This guide will show the steps to replace the bottom motherboard.

Metal spudgers and similar pry tools can puncture an unprotected battery, potentially causing a fire. When working with electronics, it's important to choose a tool that's ESD-safe to avoid accidental damage to the device. The metal spudger is great when you need serious prying power, but the regular black nylon spudger or a plastic opening tool should be used whenever possible.




TOOLS:

- [Phillips #0 Screwdriver](#) (1)
 - [Spudger](#) (1)
 - [Screwdriver](#) (1)
 - [Phillips #1 Screwdriver](#) (1)
-

Step 1 — WIFI Card

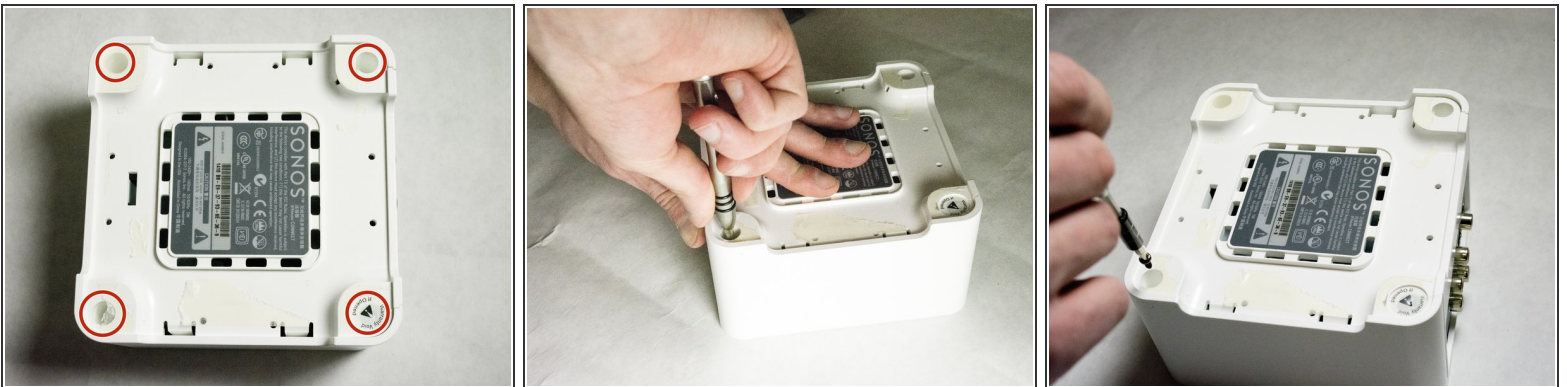


- Start by using a spudger or plastic opening tool to remove the bottom cover.

 When working with electronics, it's important to choose a tool that's ESD-safe to avoid accidental damage to the device. The regular black nylon spudger or a plastic opening tool should be used whenever possible.

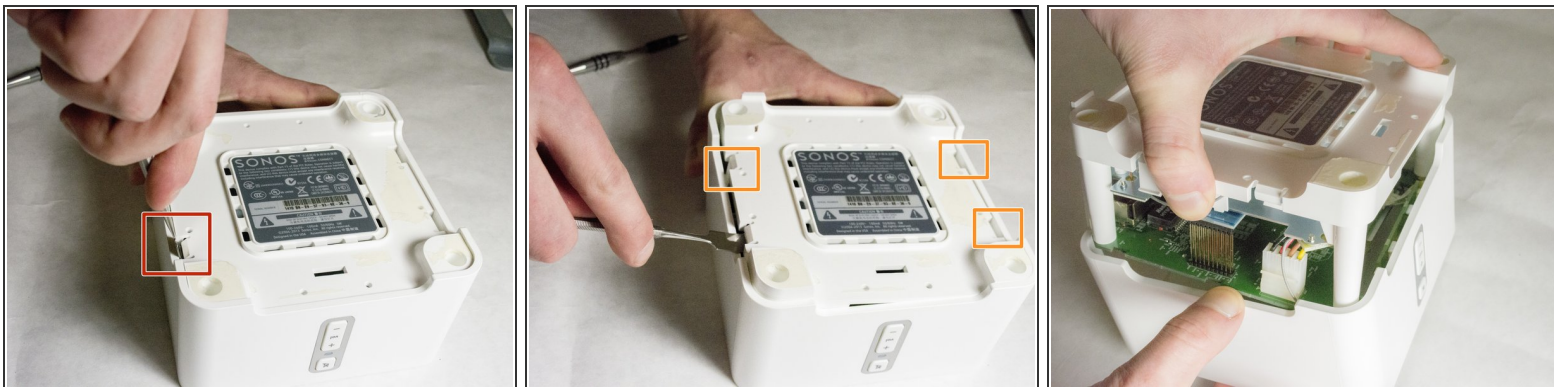
- Once enough of the glue is removed, peel the cover off by hand,

Step 2



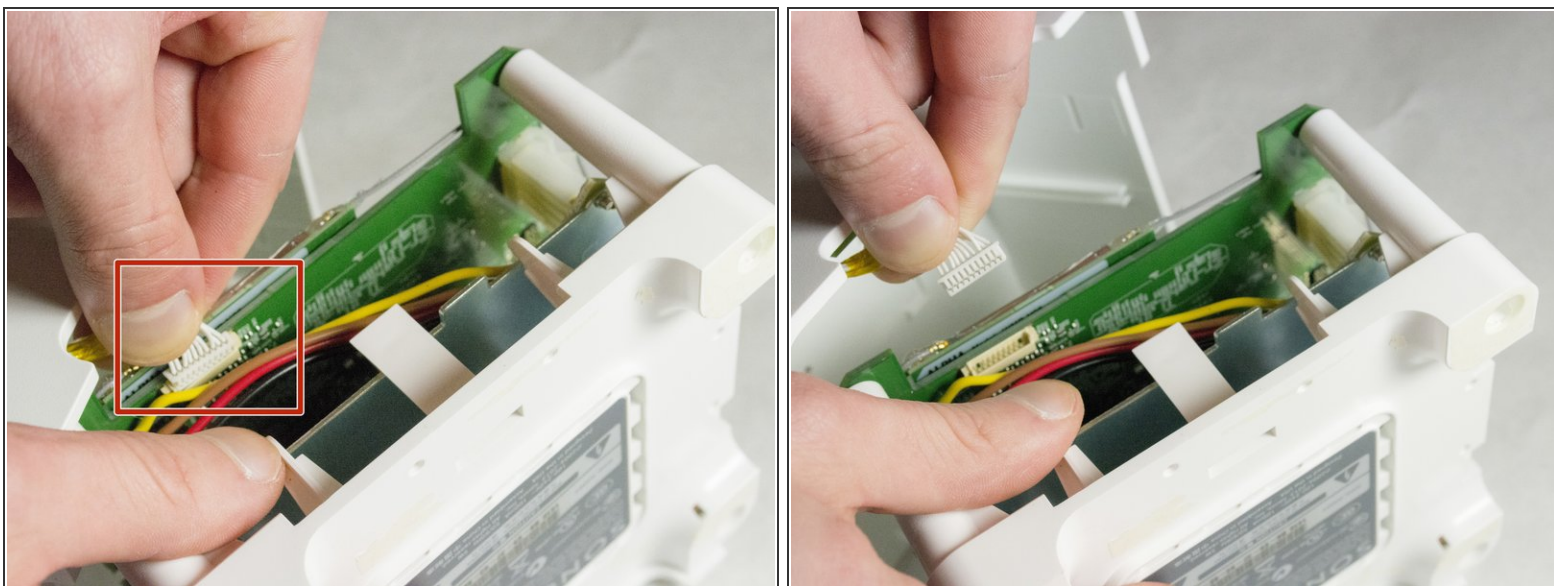
- Remove the four 7.5mm length Philips head screws under the rubber cover.

Step 3



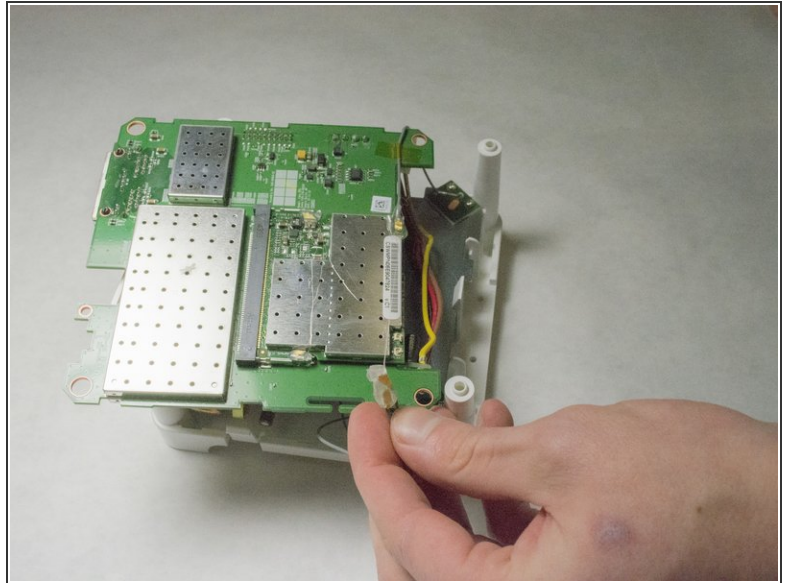
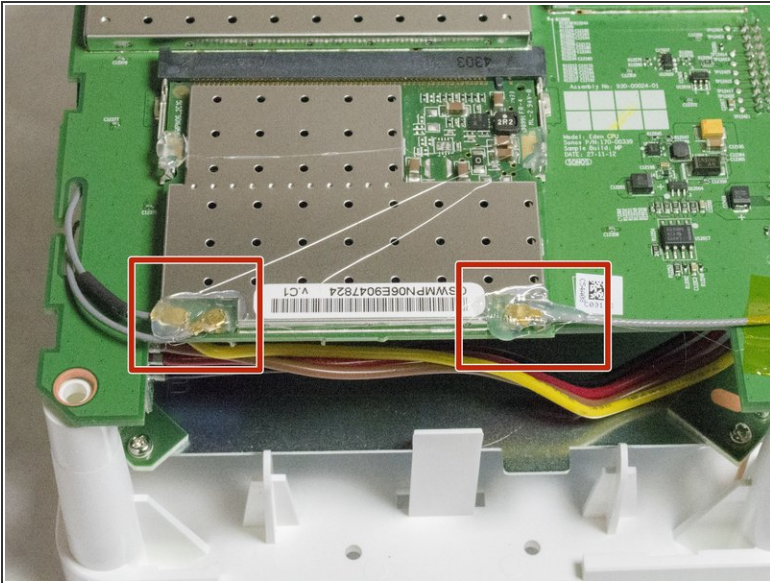
- Use a nylon spudger to unsnap the bottom from the sides.
- Pry until the remaining three points are unsnapped.
- Once unsnapped, lift the cover.

Step 4



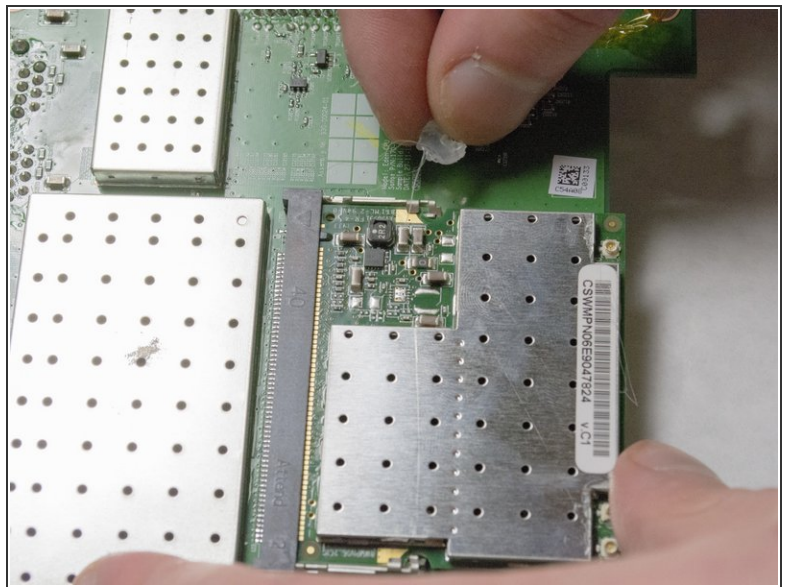
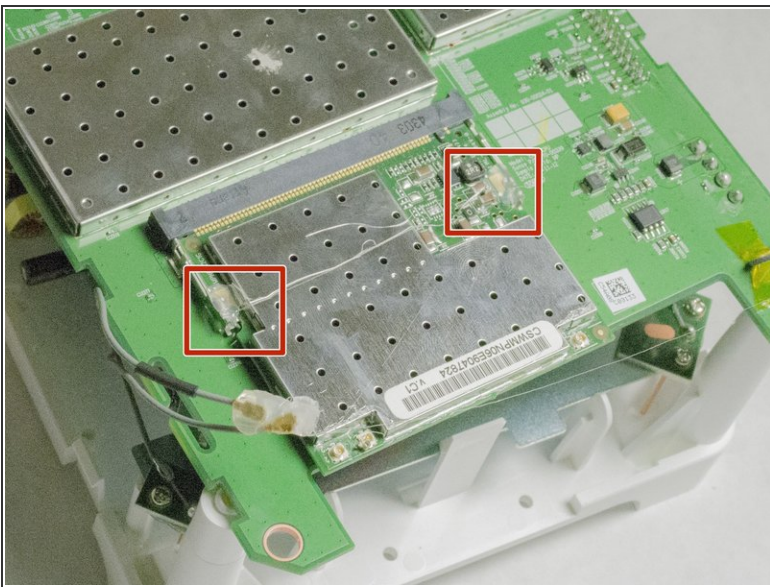
- Remove the connection for the front buttons to fully remove the cover.

Step 5



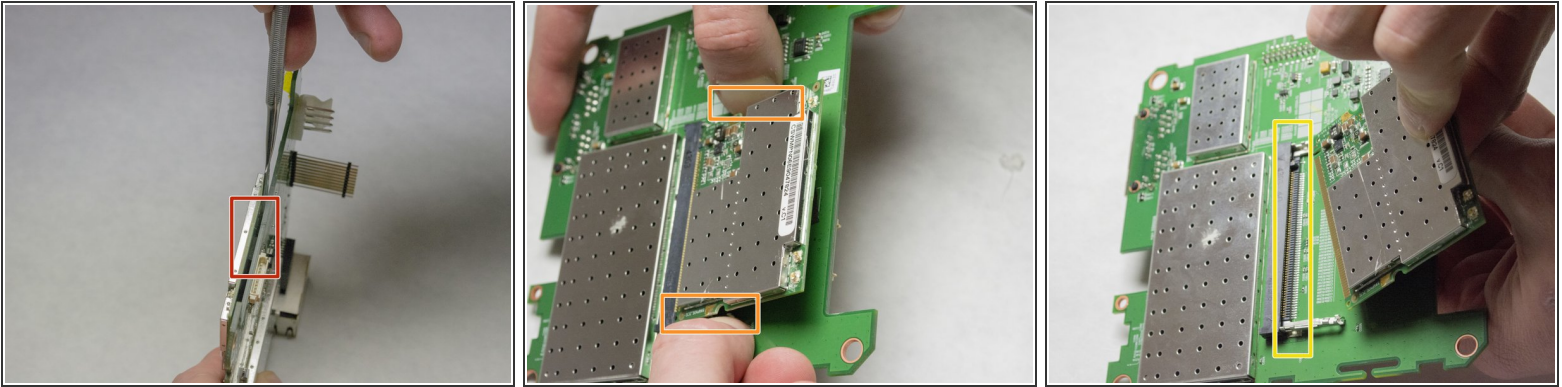
- Use a plastic opening tool or spudger to remove the adhesive covering the the WIFI connectors.
- Gently pull the wires at the connection point to disconnect them from the motherboard.

Step 6



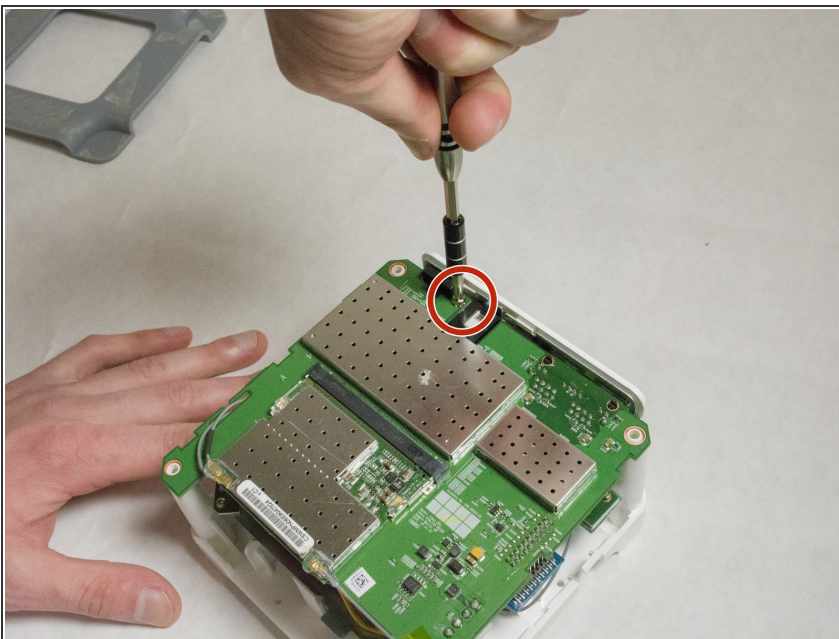
- Remove the two pieces of glue holding the WIFI card in place.

Step 7



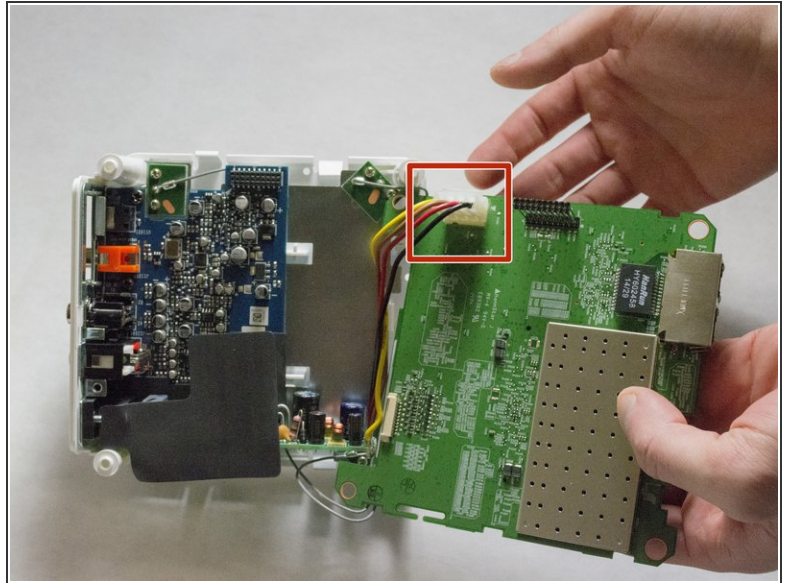
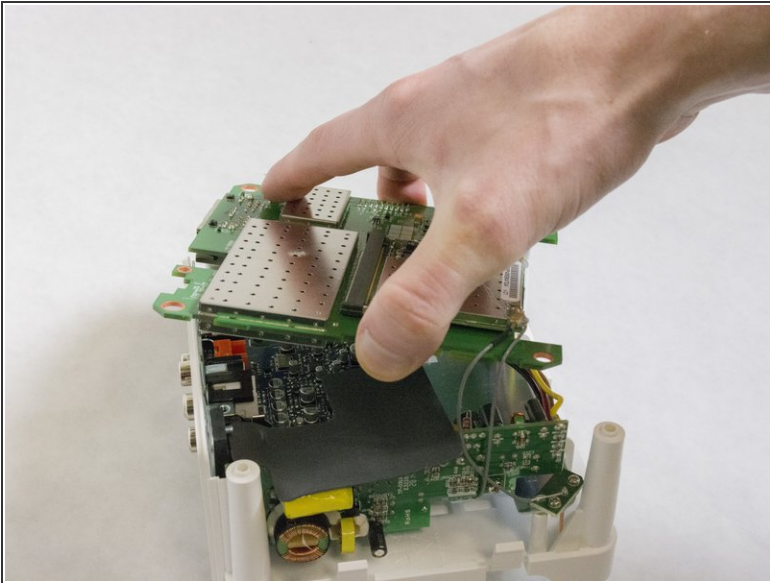
- Scrape the glued pad underneath the WIFI card to separate the card from the board.
 - Push apart the two clips holding the WIFI card in the connection.
 - Pull the WIFI card out of the connection.
- ☒ When putting the new WIFI card in, put the card in the connector first, then push downward until it clicks.

Step 8 — Top Motherboard



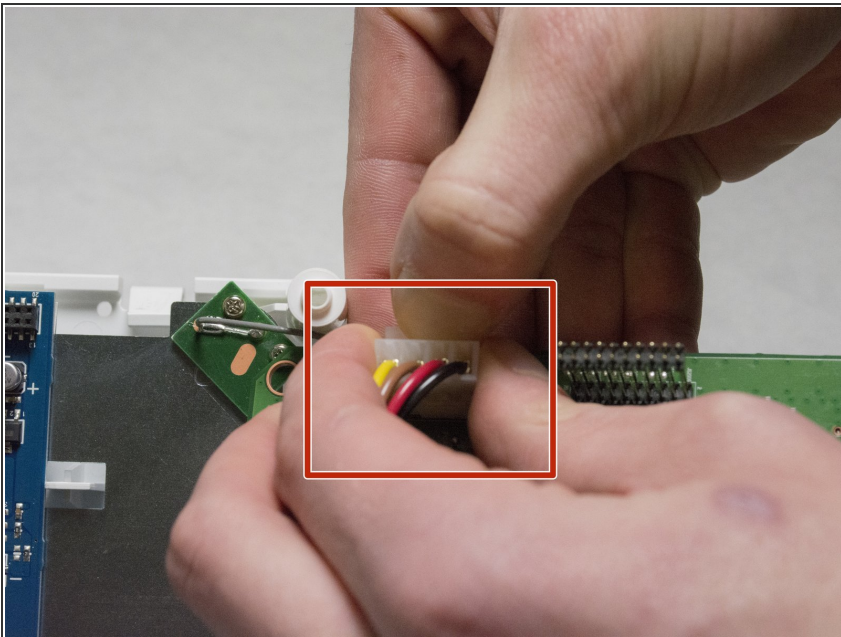
- Remove the 7mm length Phillips screw holding the board in place.

Step 9



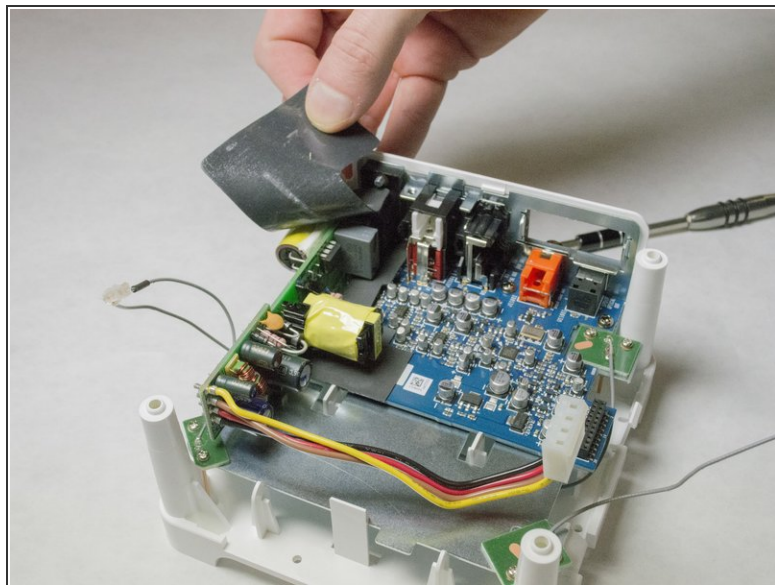
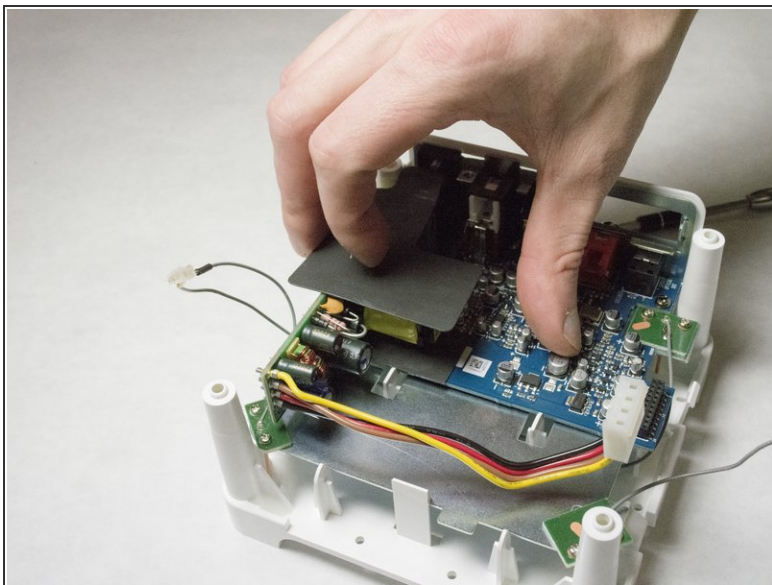
- Flip the board over to access the Molex Cable.

Step 10



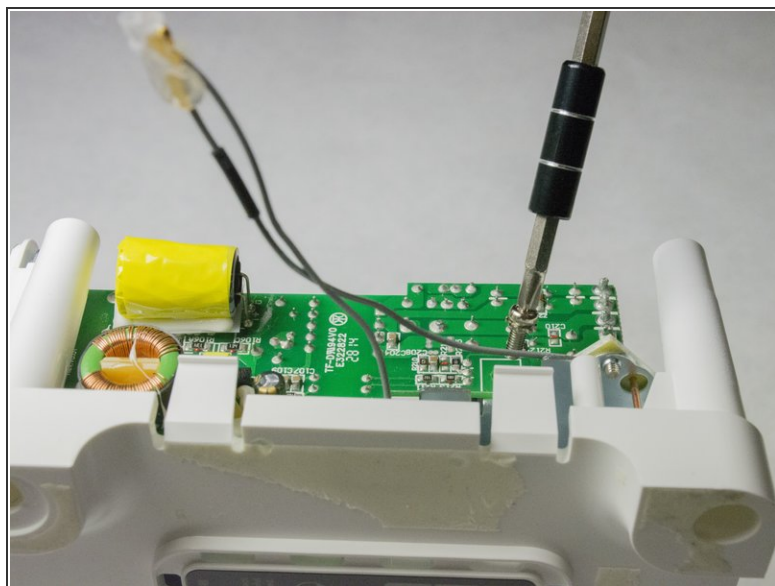
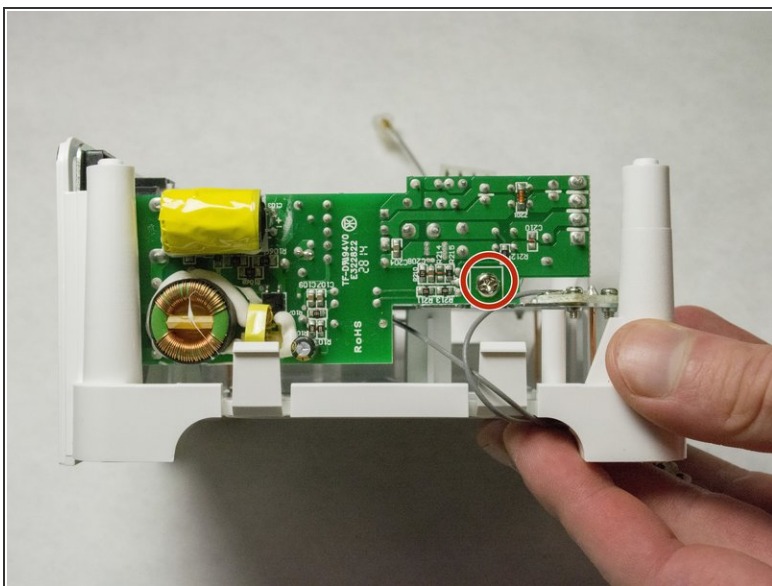
- Disconnect the Molex Cable from the top motherboard.

Step 11 — Internal Power Supply



- Remove foam protective insulator from the bottom board.

Step 12



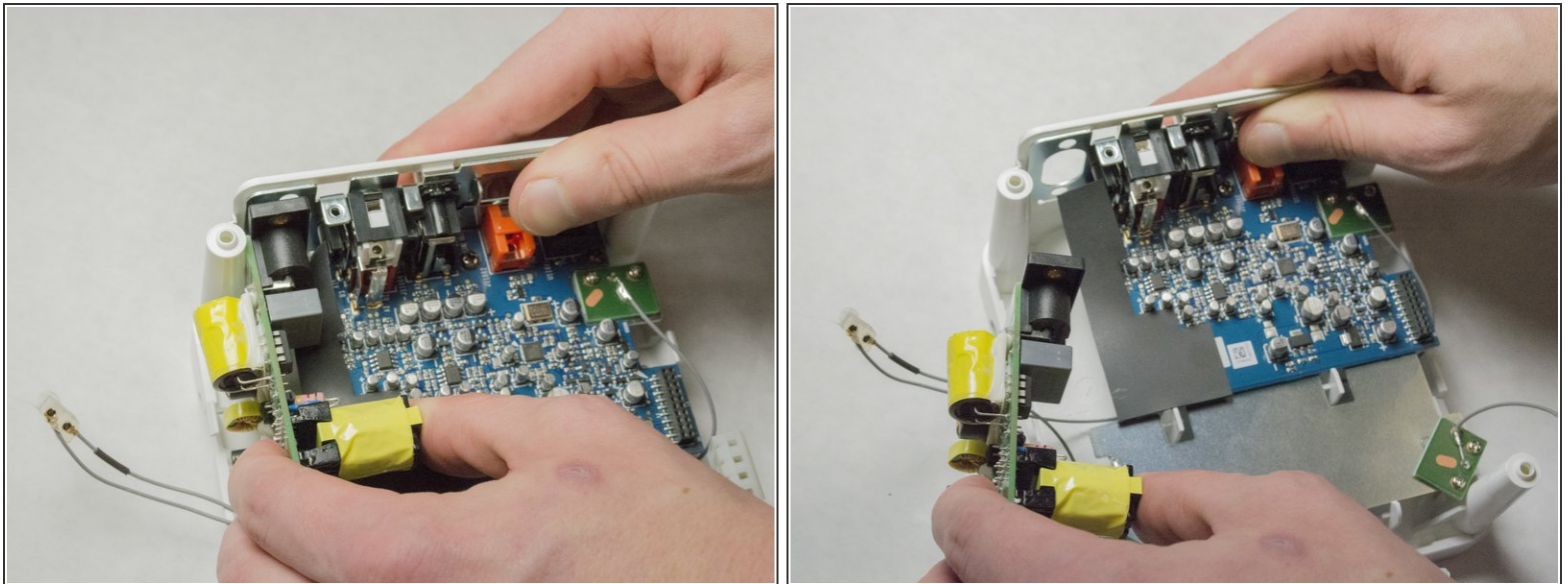
- Picture shows the side of the device.
- Remove the 7mm length Phillips screw from the power supply motherboard.

Step 13



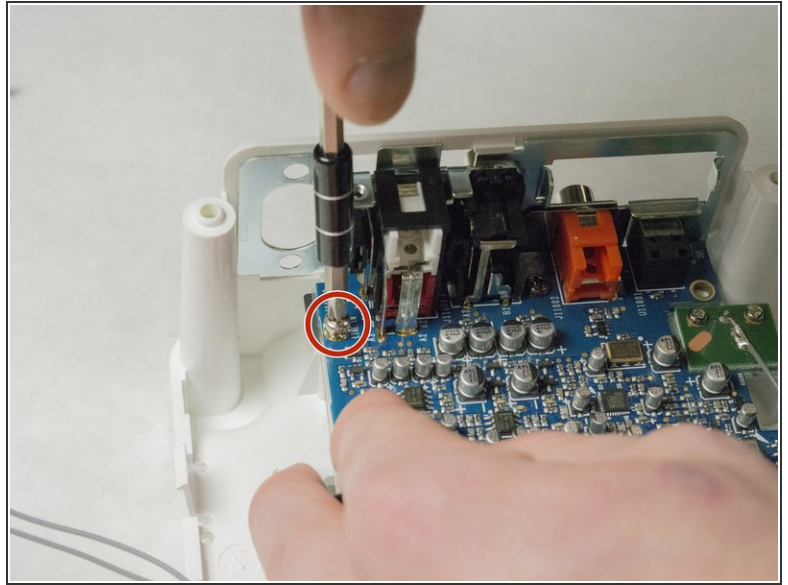
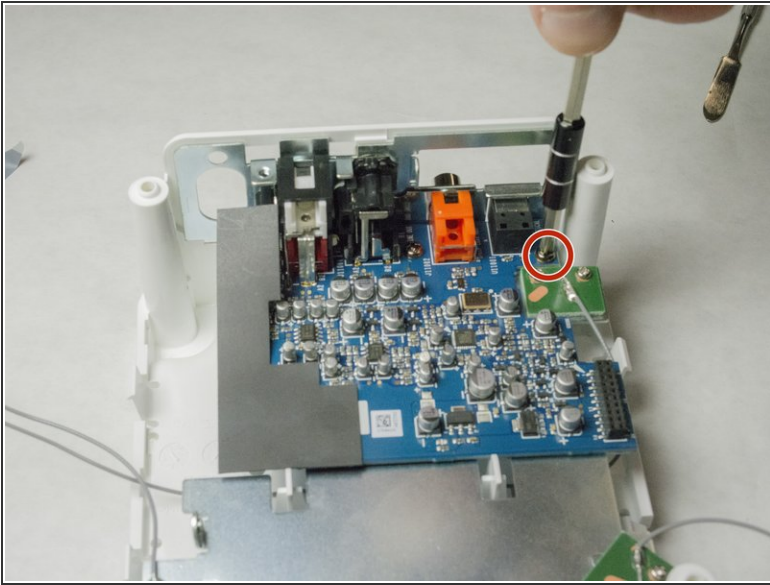
- Remove the adhesive backed rear label by using a spudger.
- Remove the two 8mm length screws as shown.

Step 14



- Pull the power supply out of the back of the device.

Step 15 — Bottom Motherboard



- Remove the two 7.5mm length screws on the top of the board.

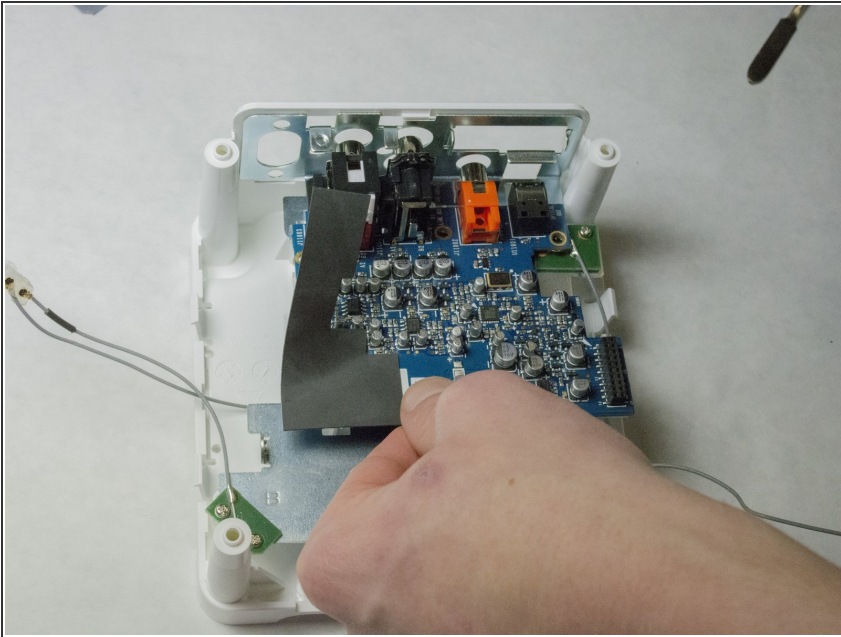
Step 16



- Remove the other two 8mm length screws on the back of the device. You might have already removed

the screws for the power supply,
and that's OK!

Step 17



- Slide the board out from the plastic casing.
- ⓘ You must pull the board out from back to front, because of the plugs on the back of the board.

To reassemble your device, follow these instructions in reverse order.