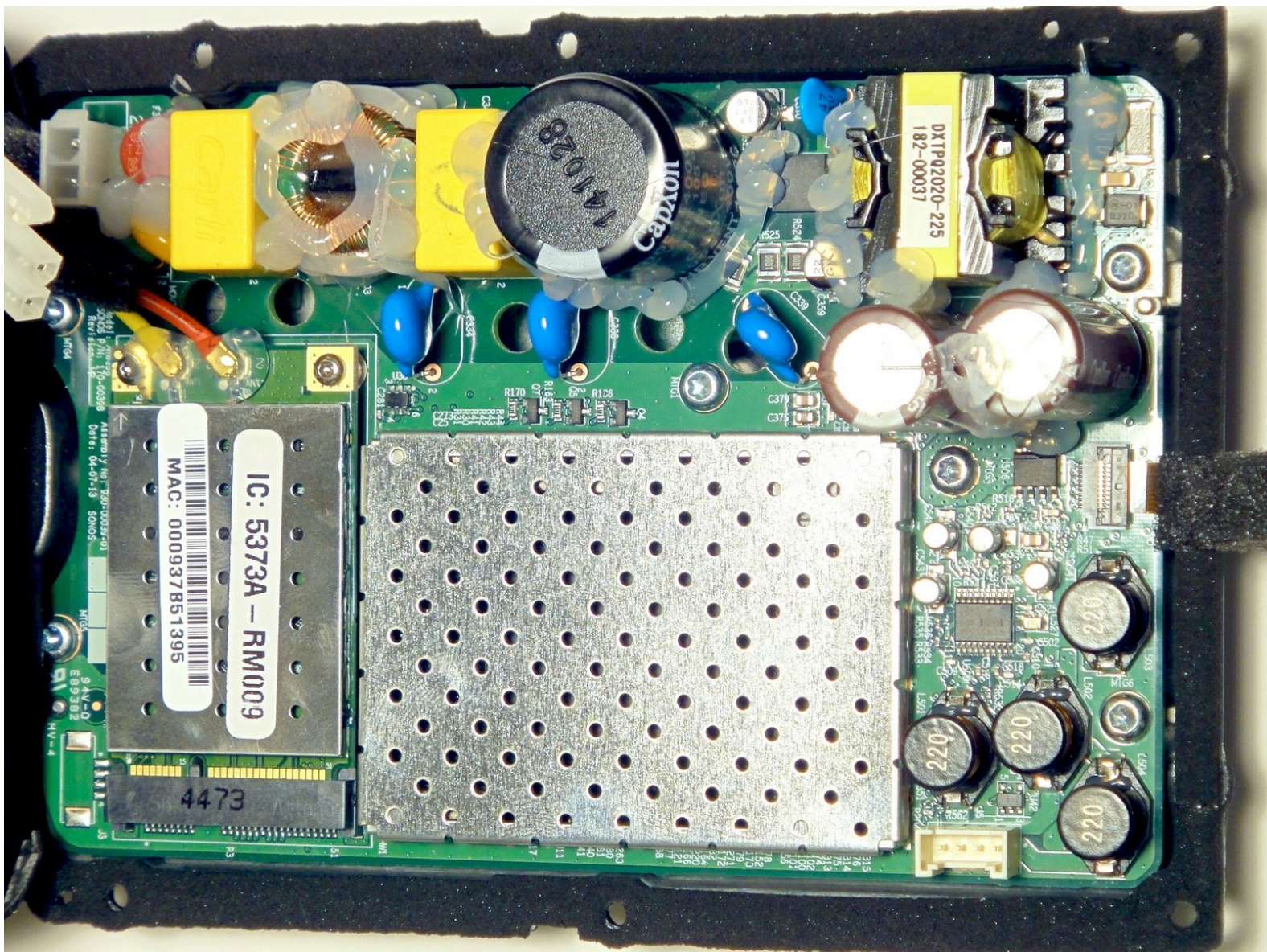




Sonos Play 1 Motherboard Replacement

This guide will demonstrate how to deconstruct and remove the motherboard from the device (requires driver kit, tweezers, plastic opening tools, and metal spudger)

Written By: Margarita



INTRODUCTION

If the motherboard has a short circuit or a blown capacitor your Sonos Play one will either not function properly or not function at all. This guide will show the steps on how to disassemble and replace the motherboard.

TOOLS:

- [Tweezers](#) (1)
 - [64 Bit Driver Kit](#) (1)
 - [Metal Spudger](#) (1)
 - [iFixit Opening Tools](#) (1)
 - [Tweezers](#) (1)
-

Step 1 — Exterior Screen



- Remove the rubber footing from the bottom of the device. Pry it up from one end using one of the plastic opening tools.
- Once you pry open one end, use precision tweezers to remove rubber footing.

Step 2



- Using a metal spudger, pry open a corner of the adhesive tape.
- Use precision tweezers to remove the adhesive tape.

Step 3



- Remove the four 10 mm Torx security #10 screws that hold the base together.
- Remove the base by lifting it vertically away from the bulk of the device.

Step 4



- Remove the 10 mm Torx security #10 screw that holds down the exterior screen.
- Using precision tweezers, remove the metal bracket.

Step 5



- Remove the exterior screen by lifting it away from the bulk of the device.

Step 6 — Sonos Play 1 Top Cover Disassembly



- Remove the four 9 mm Torx Security #9 head screws. There are two on each side.

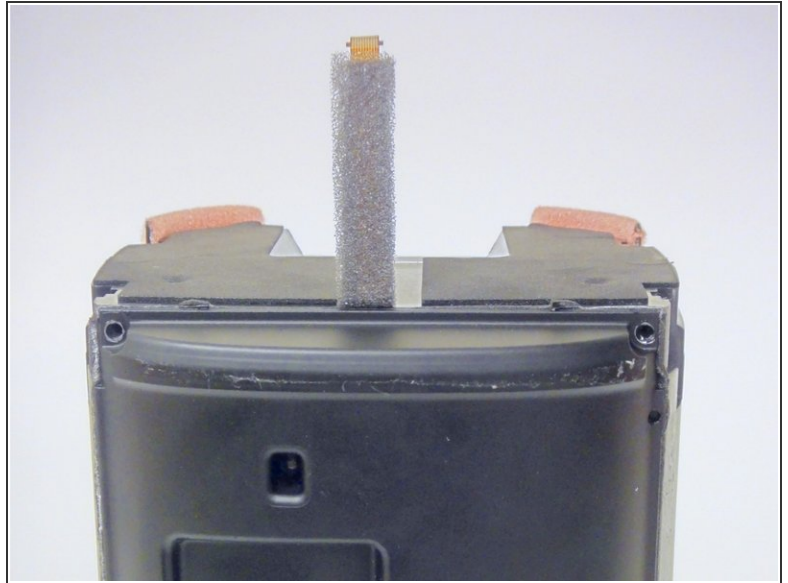
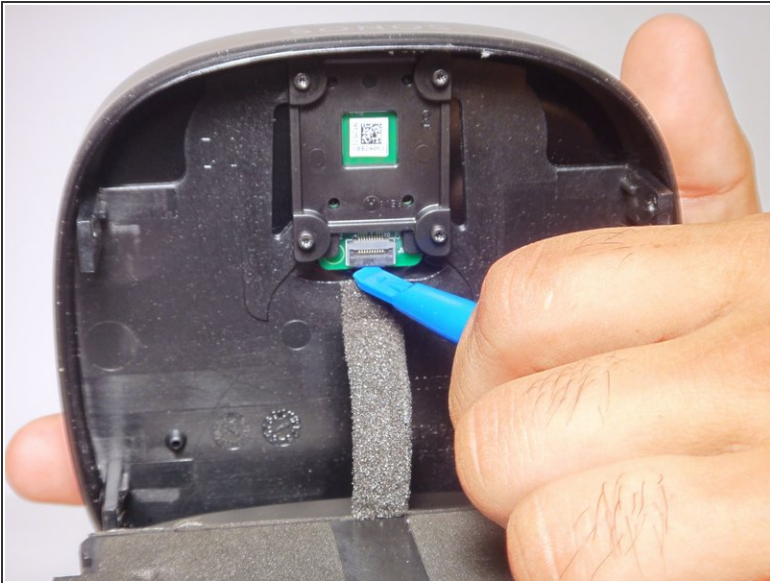
Step 7



- Using a plastic opening tool, pry open the top cap containing the power and volume button.
- Vertically remove the top cap.

⚠ Be sure to not jerk the top cap when removing , as to not damage the cable linking the switchboard to the motherboard.

Step 8



- Using a plastic opening tool, pry open the circuit flap.
- Once flap is loosened, use your hand to remove the circuit wire.

Step 9 — Disassembling Sonos Play 1 Rear Housing Cover



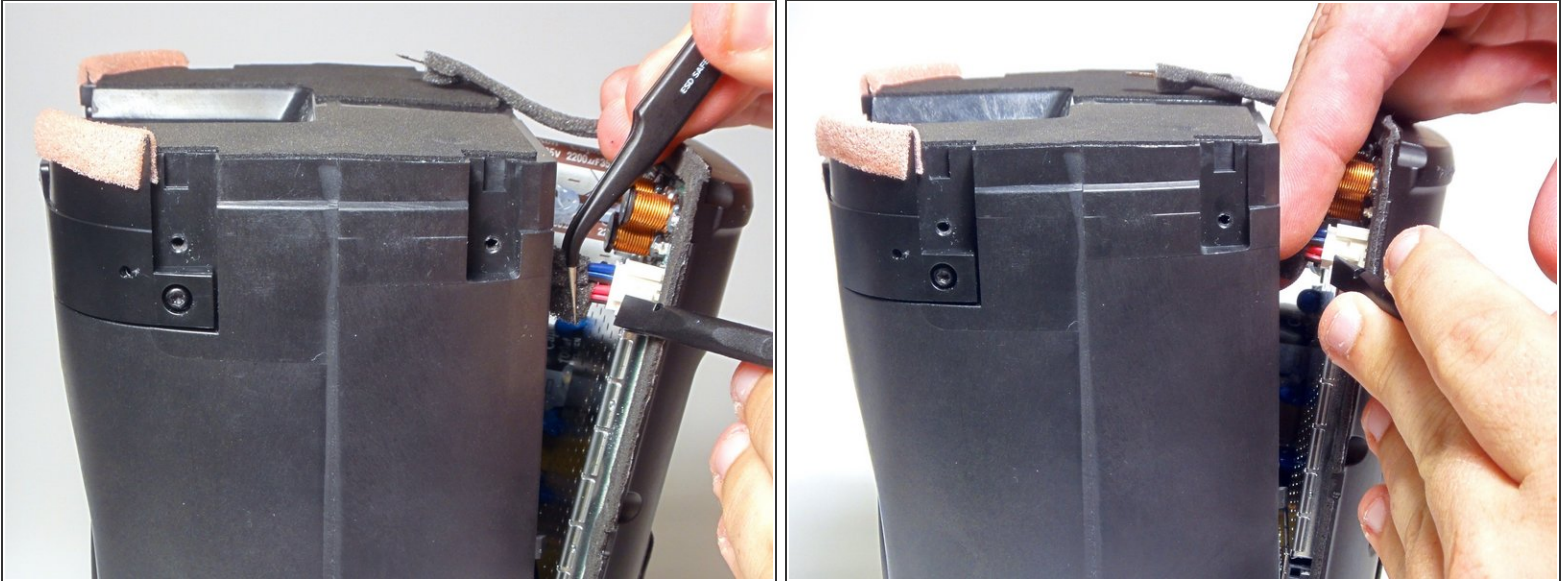
- Using a plastic opening tool, remove the grey tape from both sides of the device.

Step 10



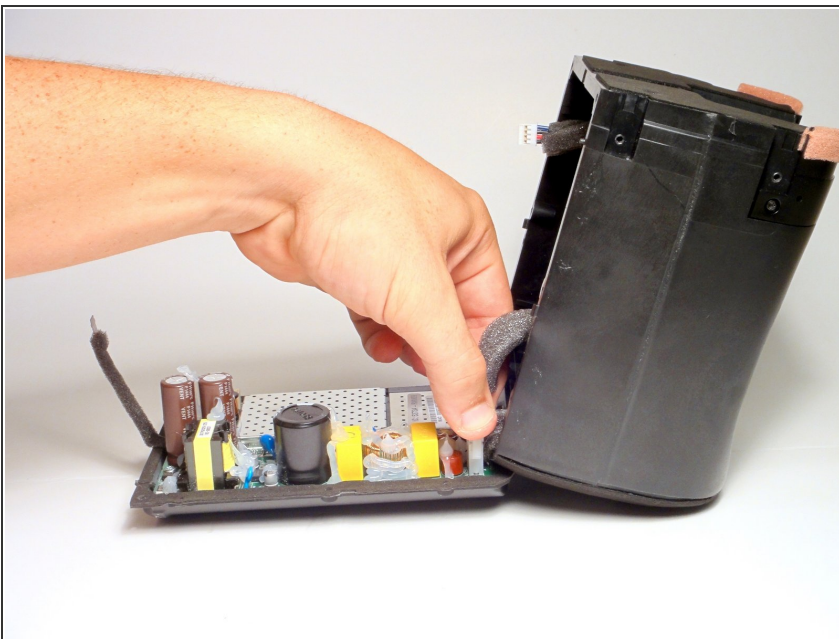
- Remove the six 9 mm Torx #9 screws.
 - Using a plastic opening tool, detach the rear housing cover from the housing.
- ⚠ Try not to jerk the rear housing cover, as its wires are still connected to delicate electronics.

Step 11



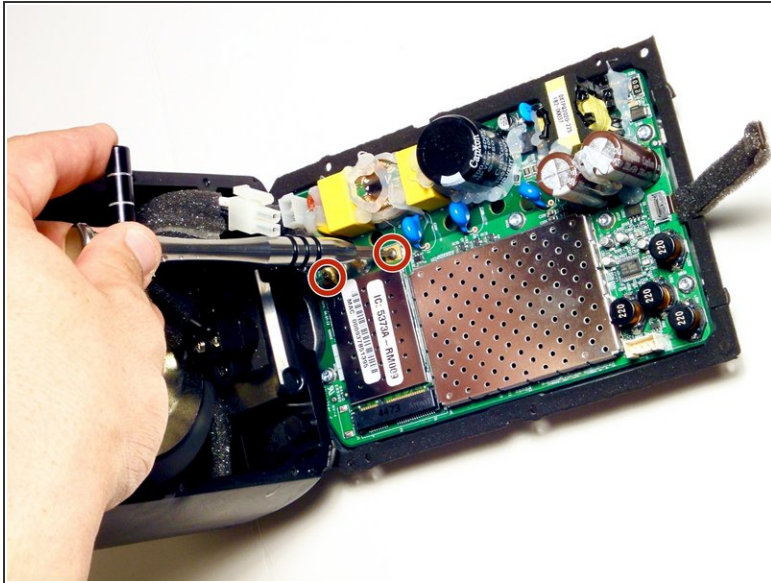
- Using tweezers, grip the connector fixed to the motherboard's audio cable.
- While pulling on the connector, detach the cable by pressing the connectors release.

Step 12



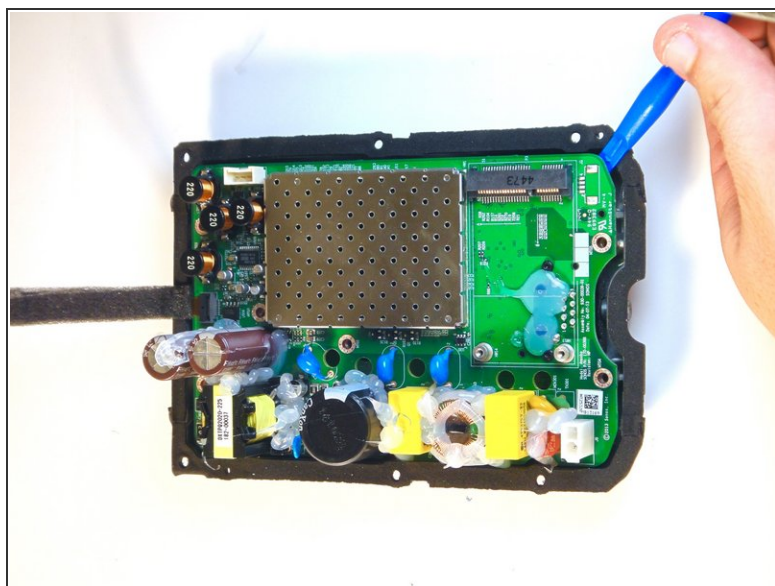
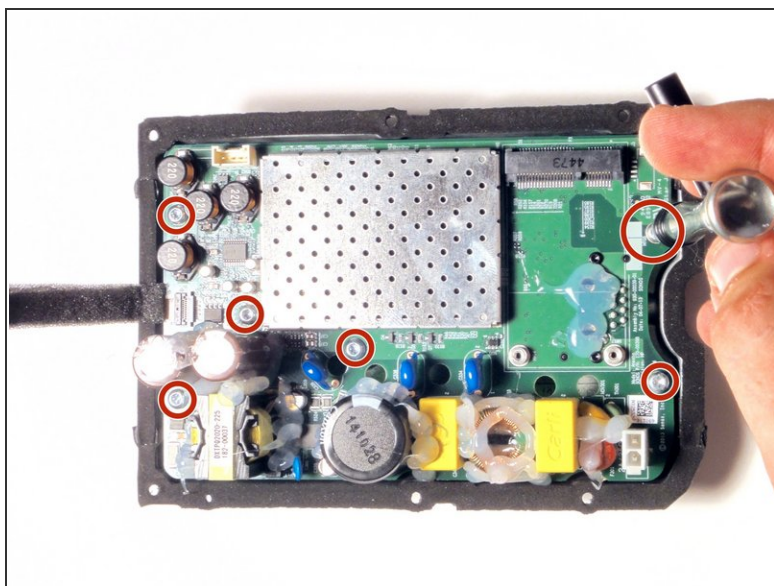
- Using your fingers, grip the connector fixed to the motherboards power cable and detach it.
- You will now be able to remove the rear housing cover.

Step 13 — Motherboard



- Remove the two 6 mm Torx #6 screws securing the communications board to the motherboard.
 - Using your fingers, detach and remove the communications board from the motherboard.
- ⚠ Be sure to keep the communications board parallel to the motherboard when removing as to prevent damage to the connector.

Step 14



- Remove the six 10 mm Torx #10 screws fastening the motherboard to the rear housing cover.
- Using a plastic opening tool, remove the motherboard from the rear housing cover.

To reassemble your device, follow these instructions in reverse order.