



Sonos Play 1 Top Cover Disassembly

Prerequisite Only

Written By: Adan Camerino Macias



INTRODUCTION

This is a prerequisite for the other Sonos Play 1 guides.



TOOLS:

- [64 Bit Driver Kit](#) (1)
 - [Metal Spudger](#) (1)
 - [iFixit Opening Tools](#) (1)
 - [Tweezers](#) (1)
-

Step 1 — Exterior Screen



- Remove the rubber footing from the bottom of the device. Pry it up from one end using one of the plastic opening tools.
- Once you pry open one end, use precision tweezers to remove rubber footing.

Step 2



- Using a metal spudger, pry open a corner of the adhesive tape.
- Use precision tweezers to remove the adhesive tape.

Step 3



- Remove the four 10 mm Torx security #10 screws that hold the base together.
- Remove the base by lifting it vertically away from the bulk of the device.

Step 4



- Remove the 10 mm Torx security #10 screw that holds down the exterior screen.
- Using precision tweezers, remove the metal bracket.

Step 5



- Remove the exterior screen by lifting it away from the bulk of the device.

Step 6 — Sonos Play 1 Top Cover Disassembly



- Remove the four 9 mm Torx Security #9 head screws. There are two on each side.

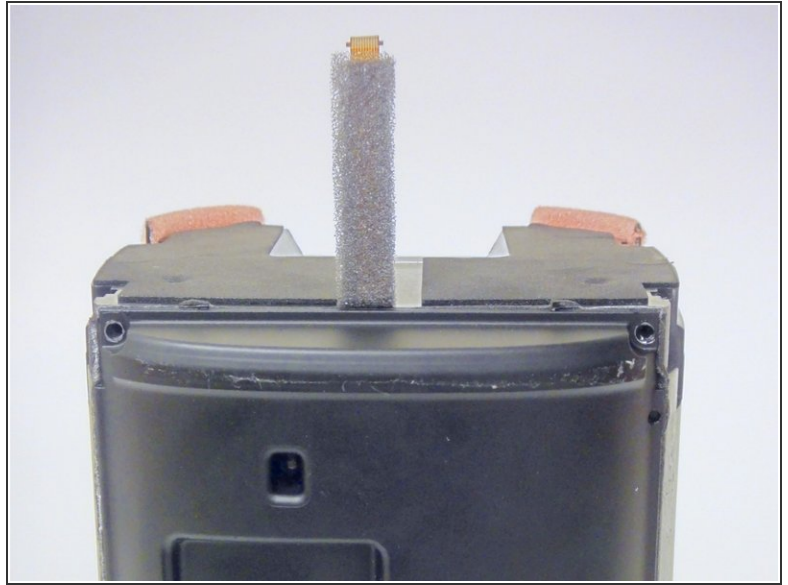
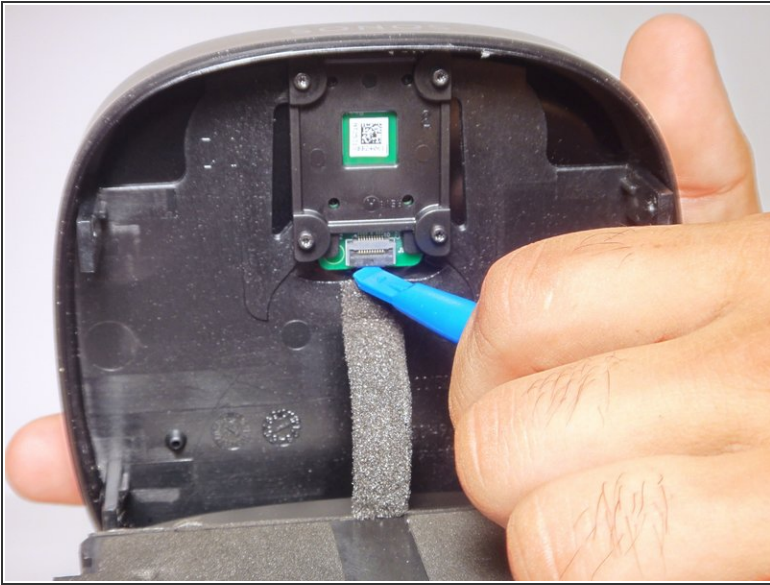
Step 7



- Using a plastic opening tool, pry open the top cap containing the power and volume button.
- Vertically remove the top cap.

⚠ Be sure to not jerk the top cap when removing , as to not damage the cable linking the switchboard to the motherboard.

Step 8



- Using a plastic opening tool, pry open the circuit flap.
- Once flap is loosened, use your hand to remove the circuit wire.

To reassemble your device, follow these instructions in reverse order.