



# Sonos Play 3 Mid-Range Speakers Replacement

This guide will show the process to disassemble the Sonos Play 3 and remove the mid-range speakers.

Written By: Christina Santini



---

## INTRODUCTION

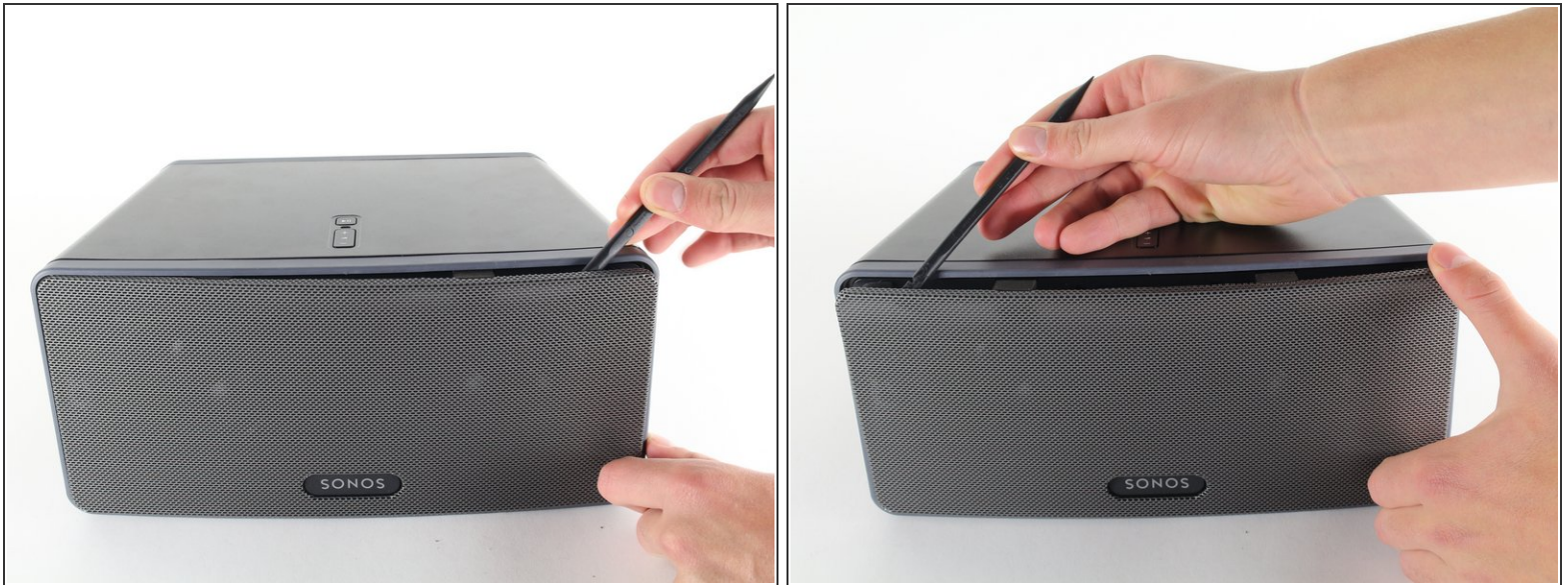
The mid-range speakers are the two large speaker modules on the front panel. These speakers produce most of the sound for your system. You may need to replace one of these if your music is sounding unbalanced or quiet.

---

### TOOLS:

- [Heavy-Duty Spudger](#) (1)
  - [Phillips #2 Screwdriver](#) (1)
  - [Tweezers](#) (1)
-

## Step 1 — Speaker Grille



- Insert a spudger along the edge of the screen and gently use it to pull the screen away from the casing. Slide the spudger along the length of the grill to detach all the clips holding it in place.

## Step 2



- Gently pull the screen away from the body of the speaker, revealing the tweeter and two mid-range drivers behind it.
- ⓘ There may be a kind of black sticky adhesive holding the screen clips to the rest of the body; however, it was previously removed on our model.



### Step 3 — Front Speaker Panel



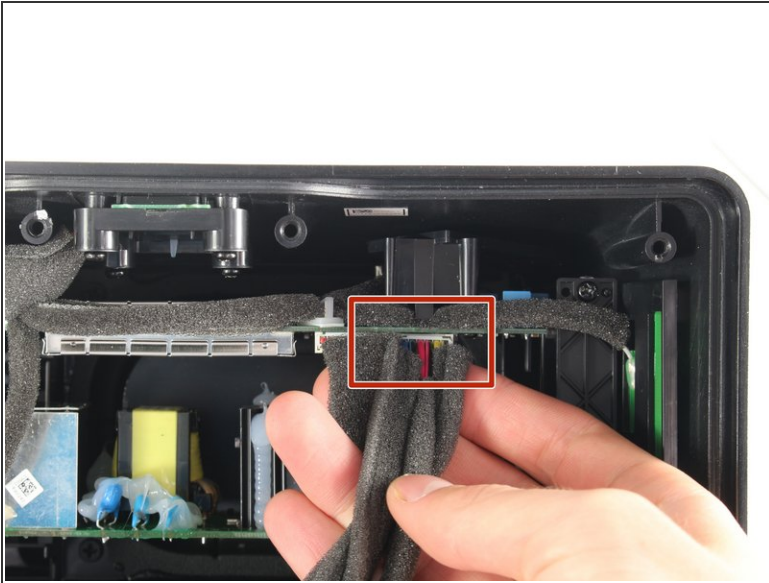
- Unscrew eight 1.5 inch Phillips #2 screws attaching the front speaker panel to the box.
- Unscrew the single 1 inch Phillips #2 screw located on the left side of the panel. This may be hidden beneath the warranty void sticker that you'll want to remove.
- Unscrew the single 3/4 inch Phillips #2 screw, which is the last thing holding the front panel to the casing.

### Step 4



- Remove the front panel carefully.
- ⓘ Note that there are two layers to the panel that should stay in their original order.

## Step 5



- Disconnect the front panel from the motherboard by gently reaching in and pushing the tab underneath the wire connector and pulling towards you.

## Step 6



- Gently remove the wireless card located at the bottom of the front speaker panel by pulling up and out with your index finger and thumb.



## Step 7 — Mid-Range Speakers



- Use tweezers to disconnect the wire connectors from the mid-range speakers. The connectors may be very tight, but we promise they do come off.

## Step 8



- Using a Phillips #2 screwdriver, remove the screws securing the speakers to the front panel.

## Step 9



- Carefully lift the speaker you need to replace out the front of the panel.

To reassemble your device, follow these instructions in reverse order.