



Sonos Play 3 Speaker Grille Replacement

How to replace the exterior screen.

Written By: Christina Santini



INTRODUCTION

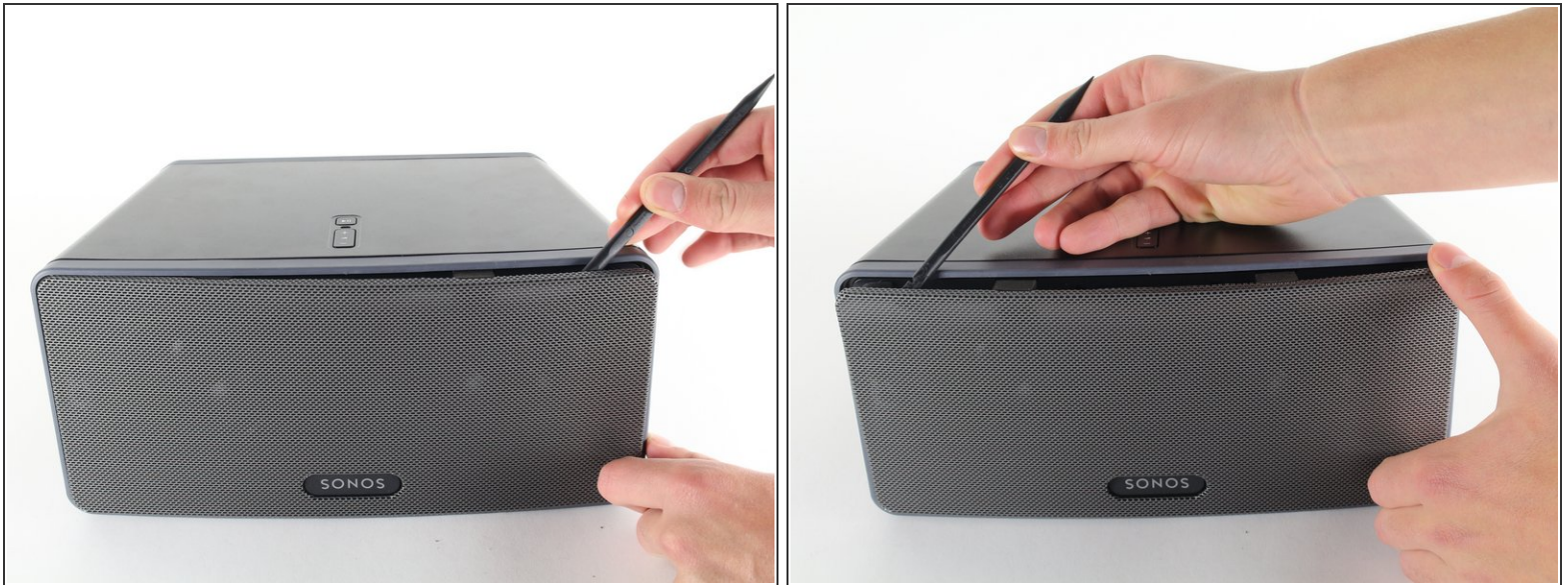
On the front face of the Sonos Play 3, there is a rectangular mesh screen. If this is damaged or there is dirt build up, it may affect the sound quality of the device. The exterior screen will need to be replaced or removed and cleaned in order to fix this problem. This guide will demonstrate how to remove the screen.



TOOLS:

- [Heavy-Duty Spudger](#) (1)
-

Step 1 — Speaker Grille



- Insert a spudger along the edge of the screen and gently use it to pull the screen away from the casing. Slide the spudger along the length of the grill to detach all the clips holding it in place.

Step 2



- Gently pull the screen away from the body of the speaker, revealing the tweeter and two mid-range drivers behind it.
- ⓘ There may be a kind of black sticky adhesive holding the screen clips to the rest of the body; however, it was previously removed on our model.

To reassemble your device, follow these instructions in reverse order.