



# Sonos Play 5 Bass Speaker Replacement

If your bass is not bumping, lack of sound effects, or broken receiver, you may need to replace it. This guide show you how to replace bass speaker.

Written By: Minh Bui





## TOOLS:

- [Phillips #1 Screwdriver](#) (1)
-

## Step 1 — Sonos Play 5 Disassembly



- Use the metal spudger to pry open the front grill. Little force will be needed to wedge the metal spudger into the crevice.
- After the grill has been loosened on all edges. Use your fingers as a wedge and gently pull the grill off the speaker. This will reveal the front speaker panel.

## Step 2



- Use a pointed metal spudger to remove the rubber plugs covering the screws in the bottom left and right corners of the speaker panel.
- Insert the spudger against the side of the rubber plug and the speaker panel while leveraging upward.
- Remove the eight 12 mm Phillips #1 screws bordering the front speaker panel.



## Step 3



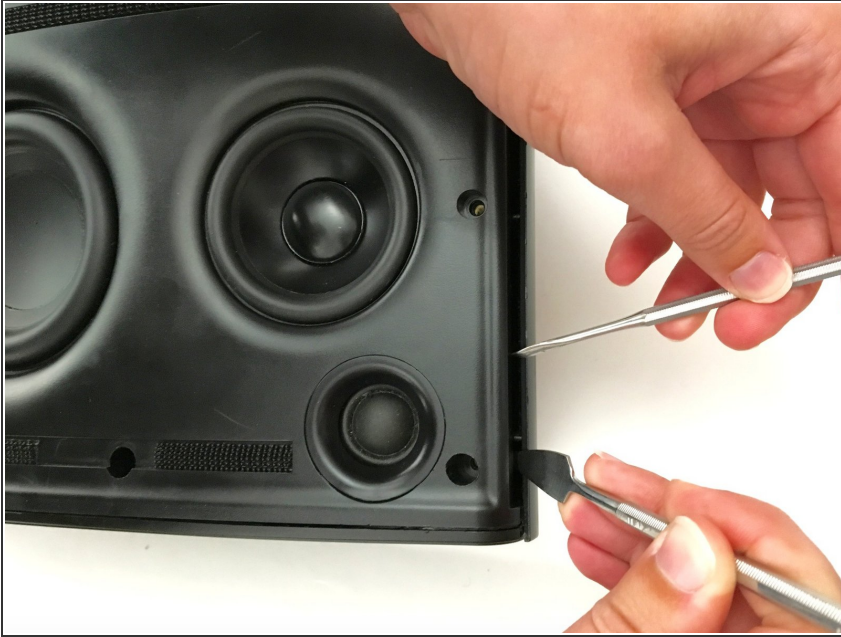
- Orient the speaker so that the volume and speaker control buttons are facing down onto your work space. The Sonos name and product number should be facing upward toward the ceiling
- Use a metal spudger to pry the outer corner of the grey rubber pad revealing eight 12mm screws.

## Step 4



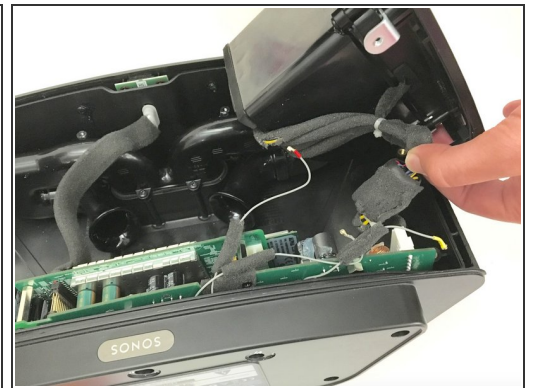
- With a #1 Phillips-head screwdriver, remove the eight 12mm screws on the bottom panel.
- We have marked the original placement of the warranty stickers in orange. To remove use a pair of tweezers to grip onto the sticker and pull with a gentle upward motion
- ❗ We have already removed the warranty stickers in this picture.

## Step 5



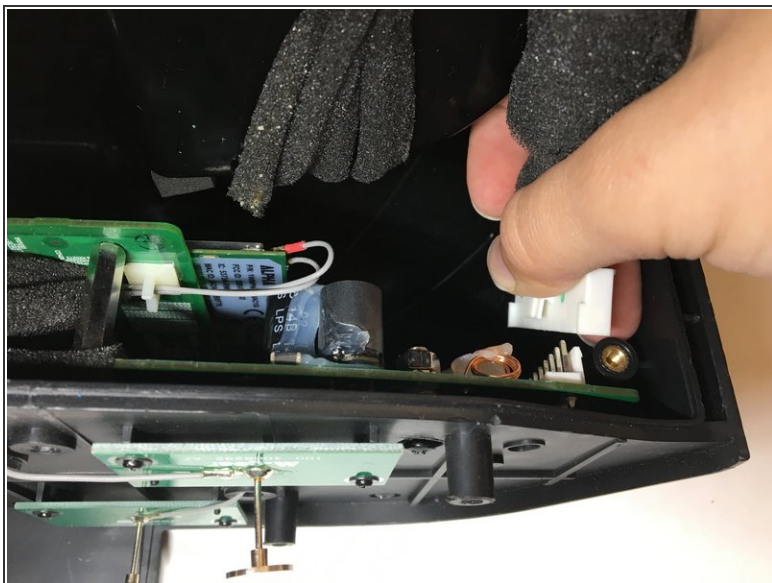
- Orient the speaker so that the speaker panel is facing upward.
  - With a metal spudger, apply medium force and wedge the spudger into the crevice with a prying motion
- i** This action will need to be repeated on all sides to allow for the panel to be opened up

## Step 6



- Use both hands to lift the front speaker panel away from the skeleton of the speaker housing.
- i** While removing the front speaker panel, pay close attention to the bottom right-hand corner. There will be an antenna connector you will need to remove in the next step.

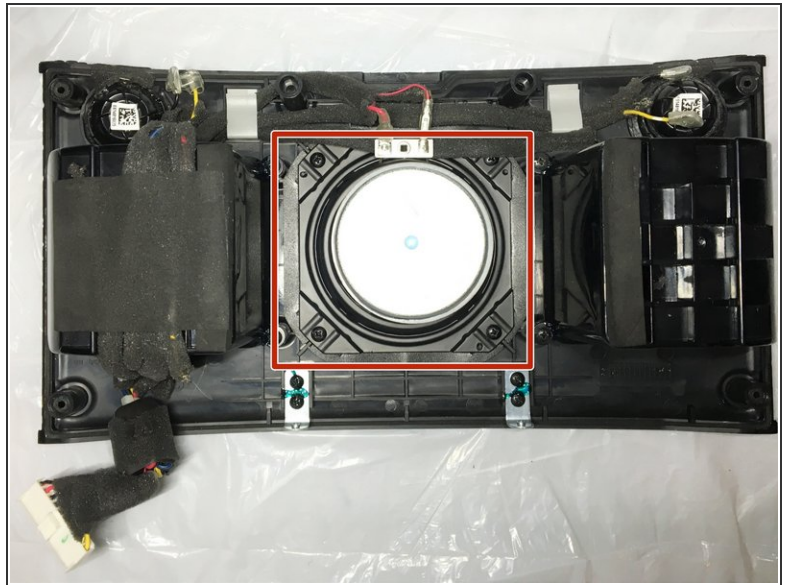
## Step 7



- Using your thumb and forefinger to grip the antenna clasp while moving outward and away from the motherboard.
- ⚠ Do not use excessive force while disconnecting. This will damage the connector and motherboard.
- ℹ We have removed the bottom panel in this picture for another guide.

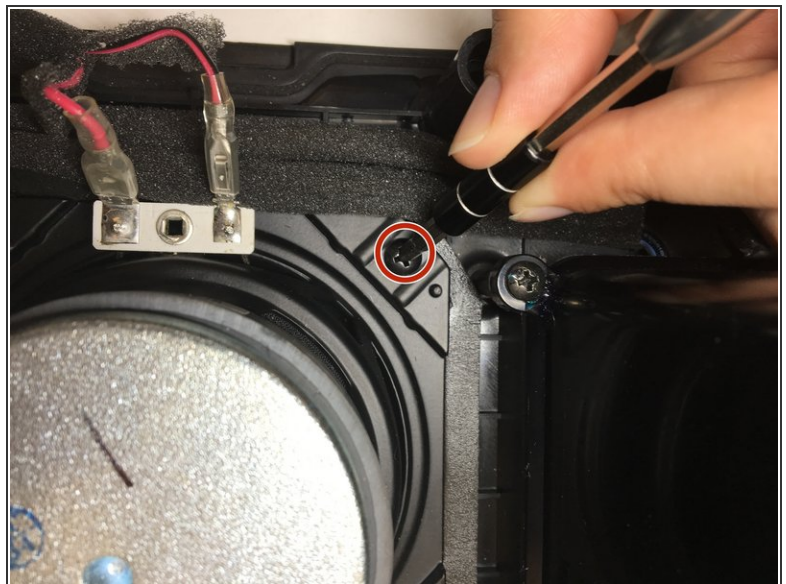
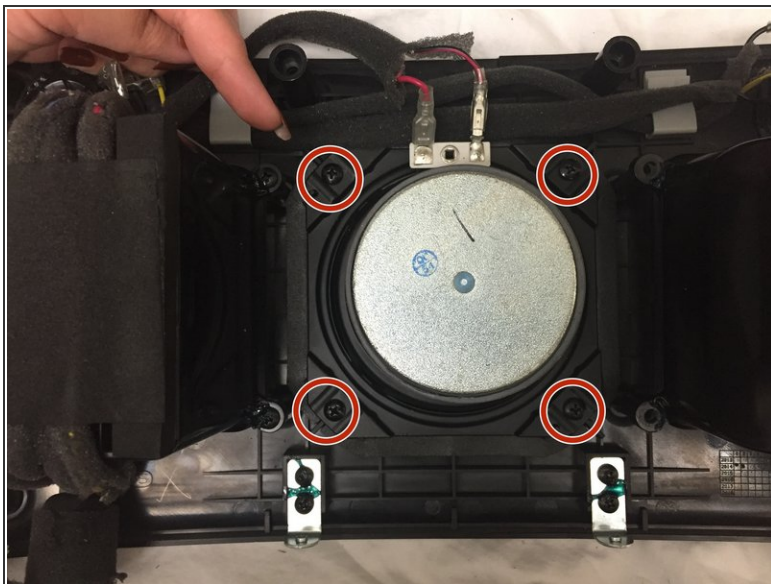


## Step 8 — Sonos Play 5 Bass Speaker



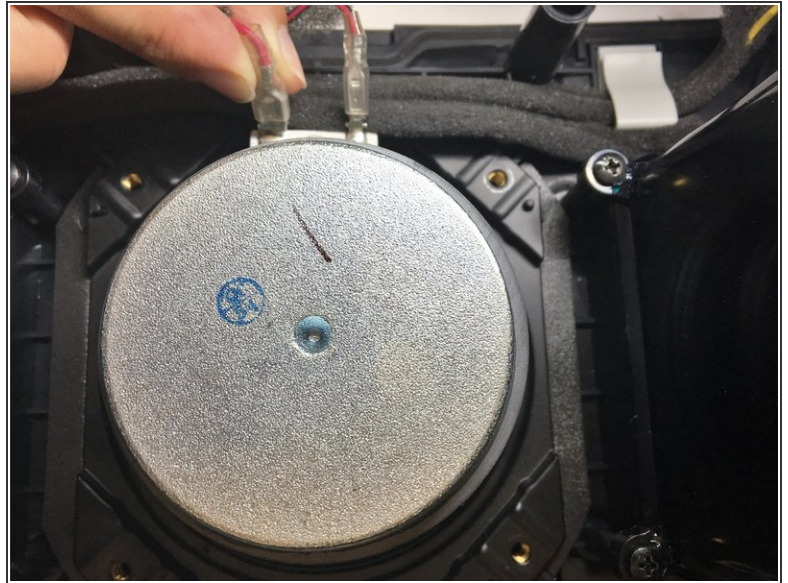
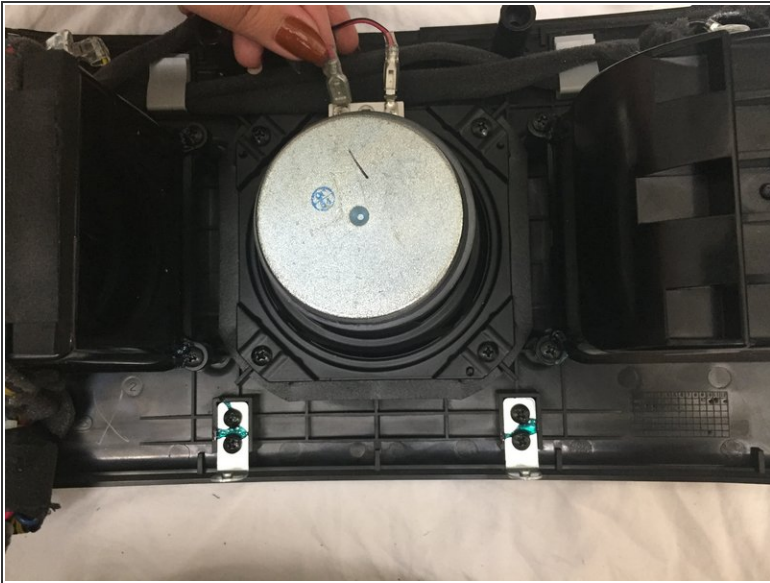
- The bass is located in the middle of the two mid-range driver speakers
- ⓘ Point of reference: This picture illustrates the back-side of the speaker panel.

## Step 9



- Use a Philips screwdriver bit-size #1 to remove the four 10mm screws surrounding the bass.

## Step 10



- Disconnect the two spade connectors from the tabs on the speaker.

## Step 11



- Remove the bass speaker from its seat by grasping the back-end and pulling upward.

To reassemble your device, follow these instructions in reverse order.