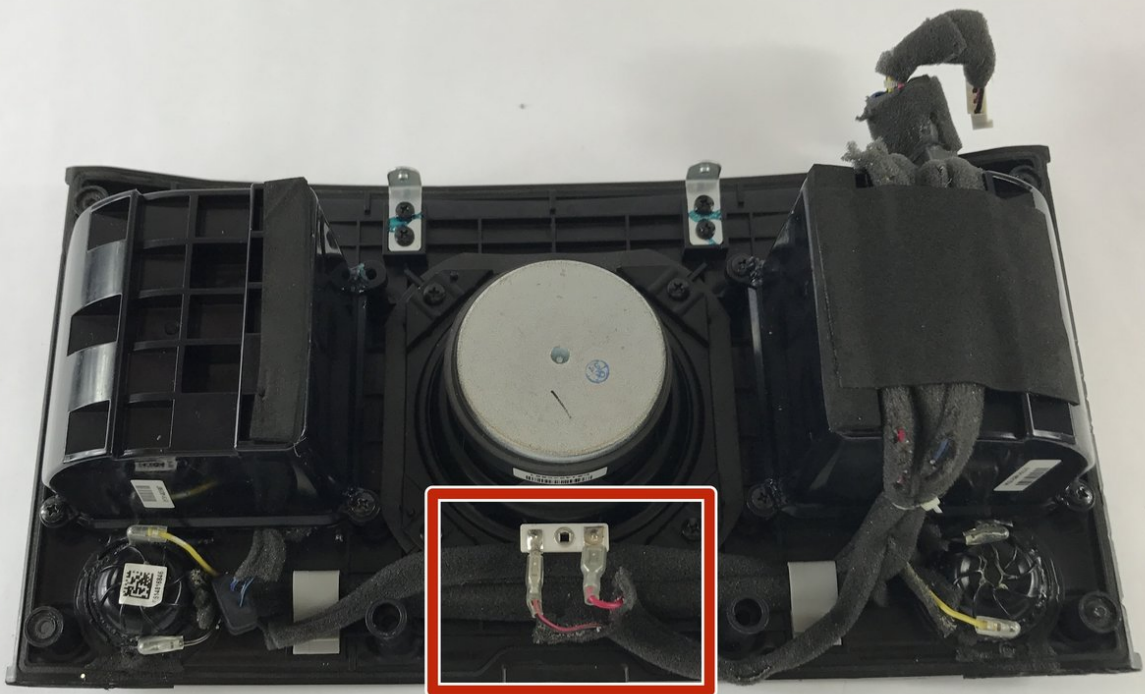




# Sonos Play 5 Subwoofer Replacement

Replace your subwoofer and bring your bass back to life

Written By: Steven Gioiosa



## INTRODUCTION

This guide will instruct you on how to replace your subwoofer. Keep in mind that the backs of the subwoofer are magnetic, so when working, keep them away from any devices that may be harmed by exposure to magnets.



### TOOLS:

- [Phillips #2 Screwdriver](#) (1)
  - [Heavy-Duty Spudger](#) (1)
-

## Step 1 — Front Panel Assembly



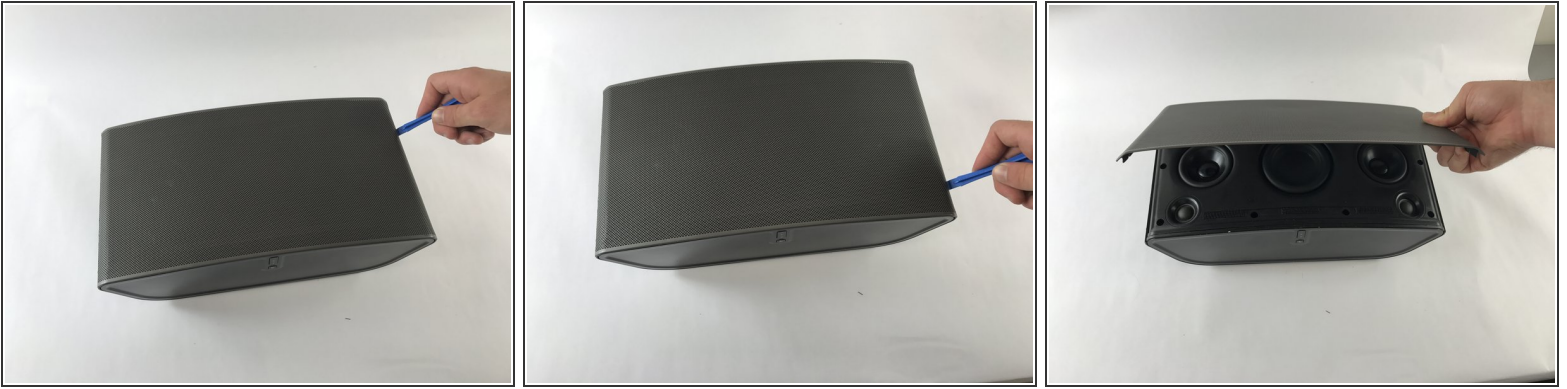
- Disconnect any power to the speaker and wait a few minutes for the capacitors to fully discharge.
- Flip the speaker upside down.
- ⓘ There may be a rubber foot covering the bottom screws (not included in picture). Remove this by pulling up from one of the corners using a spudger.

## Step 2



- Remove eight 10mm Phillips #2 screws
  - Remove the bottom panel by pulling upwards.
- ⚠ Be very gentle with the ends of the three antennas. They are very fragile.

### Step 3



- Flip the device so that the grille is facing up.
- Locate the line on the right side of the speaker where the grill and the plastic meet, and place your plastic opening tool in the gap.
- Run the spudger along the gap, loosening the grille from the plastic. Repeat this process on the left side as well.
- Gently pull up on the grille, removing it from the front panel.


### Step 4



- Remove the six 8mm Phillips #2 screws.
- Remove the two 10mm Phillips #2 screws.

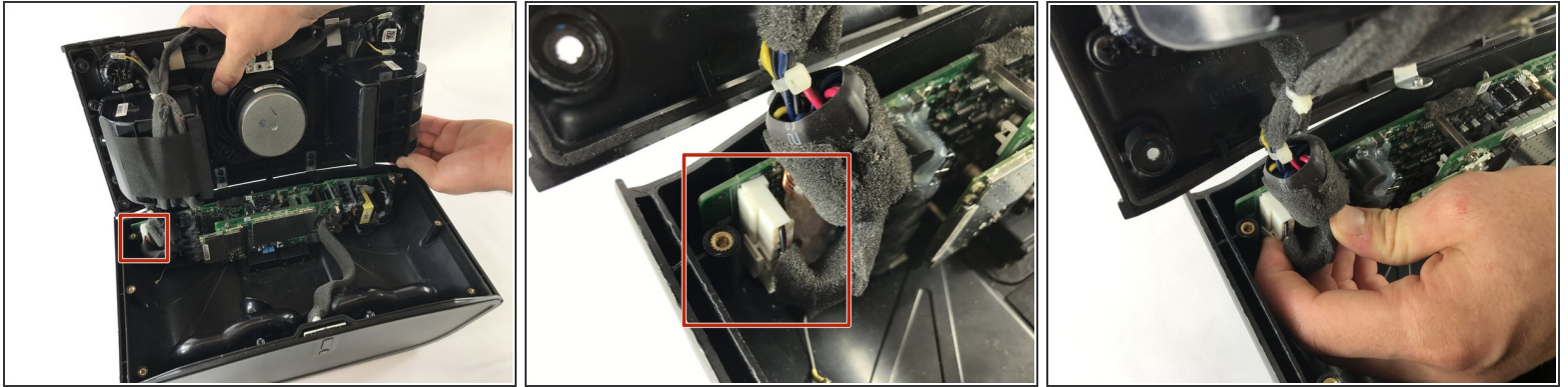
## Step 5



- Locate the line on the right side where the front panel and back panel meet. Place a plastic opening tool in the gap, and run it along the gap. Repeat this on the left side.
  - Use the opening tool to lift the front plate. If a plastic tool is not providing enough leverage, use a metal opening tool.
  - Gently pull up on the face plate to ensure it has been detached from the enclosure.
-  When pulling on the face plate be cautious because it is still connected by wires on the back of the plate.



## Step 6



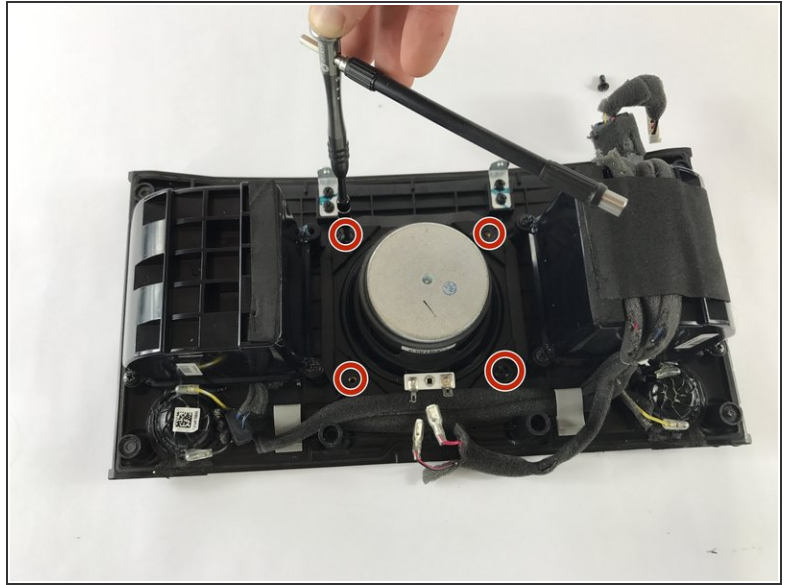
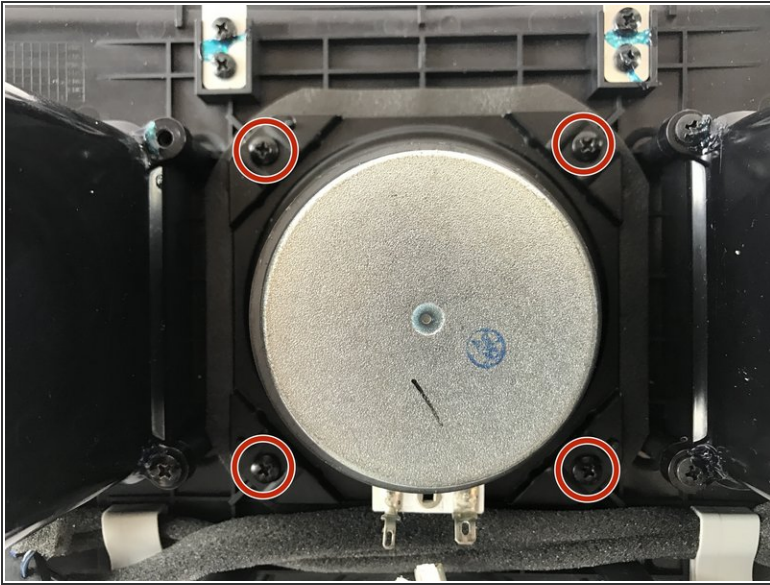
- Lift up the front panel, forming a 90 degree angle with the back panel. Locate the locate ten pin connector shown. This is the wire that connects the front panel to back panel.
- Press down on the small tab located on the connector. With the tab firmly pressed down, pull the connector out from its socket.
- The faceplate assembly is now fully detached from the rest of the speaker.

## Step 7 — Subwoofer



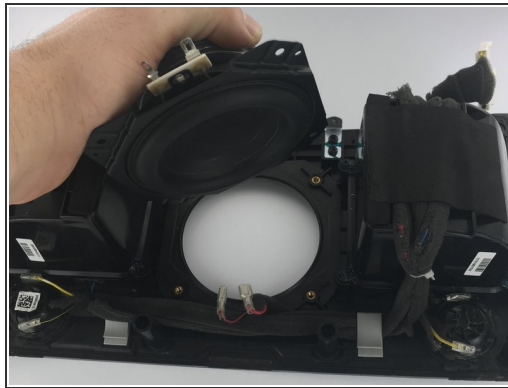
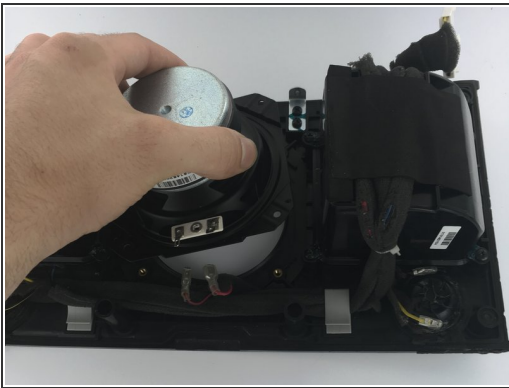
- Locate the red and black wires connected to the subwoofer.
- Disconnect the red and black wires by pulling gently on the rubber ends attached to the connectors.

## Step 8



- Remove the four 10mm long Phillips #2 screws on outer edge of the subwoofer.
- ❗ If the screws are excessively tight, consider straight arm of some sorts to give yourself some leverage.

## Step 9



- The subwoofer is now detached and able to be removed.

To reassemble your device, follow these instructions in reverse order.