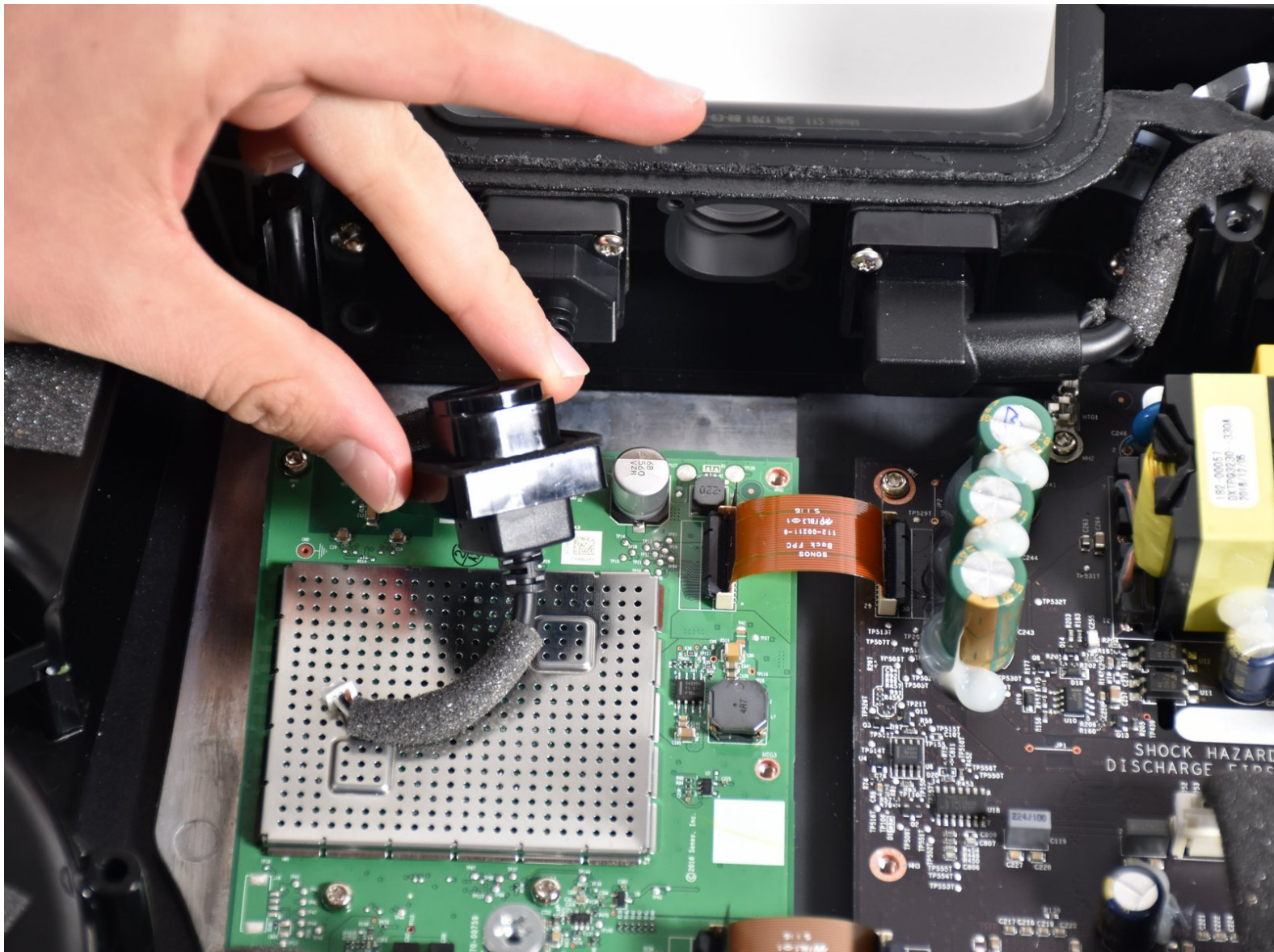




# Sonos Playbase Optical Audio Port Replacement

How to replace the Optical Audio Port from the Sonos Playbase.

Written By: James Andrews



---

## INTRODUCTION

This guide shows how to replace the Optical Audio Port from the Sonos Playbase, which supplies the audio input to the Playbase.

---

### TOOLS:

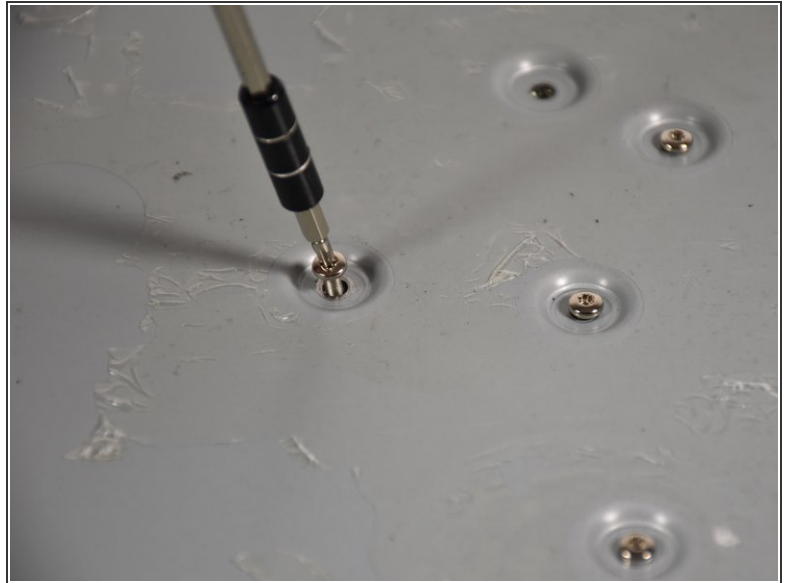
- [T10 Torx Screwdriver](#) (1)
  - [T20 Torx Screwdriver](#) (1)
  - [Metal Spudger Set](#) (1)
  - [iOpener](#) (1)
  - [T-55 Torx Security Screwdriver](#) (1)
-

## Step 1 — Bottom Panel



- Turn the Playbase upside down so that the "Sonos Playbase" imprint is face up.
- Remove the bottom panel with an [Opening Tool](#) by inserting underneath and prying upwards.
- ⓘ Melt the adhesive with an [iOpener](#) for ease of opening
- ⓘ Use a [Metal Spudger](#) if the plastic spudgers do not work.
- ⚠ Take care to avoid damaging the plastic or the device if using a metal spudger.

## Step 2




- Remove the fourteen 11mm [T-10](#) screws by turning counter-clockwise.
  - Remove the seven 44mm [T-20](#) screws by turning counter-clockwise.
  - Remove the twenty-two 34mm [T-20](#) screws by turning counter-clockwise.
- ☐ Record where each screw belongs for easier reassembly.




## Step 3

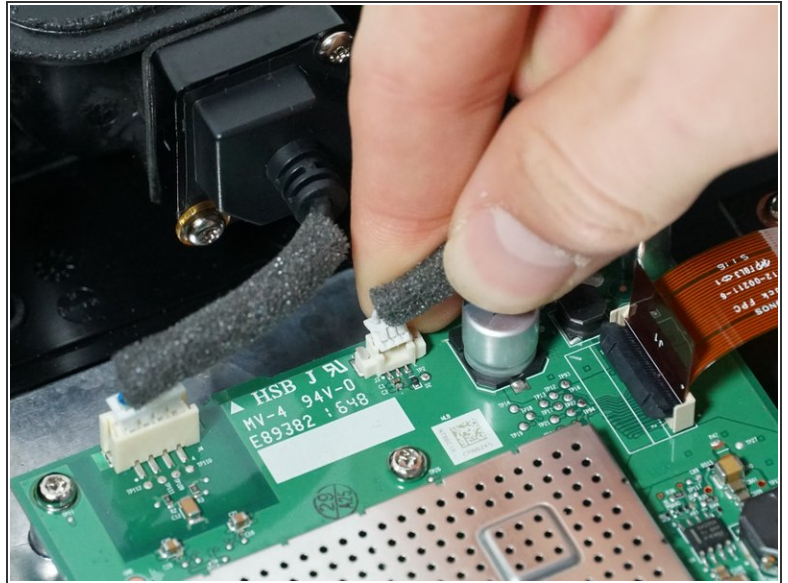
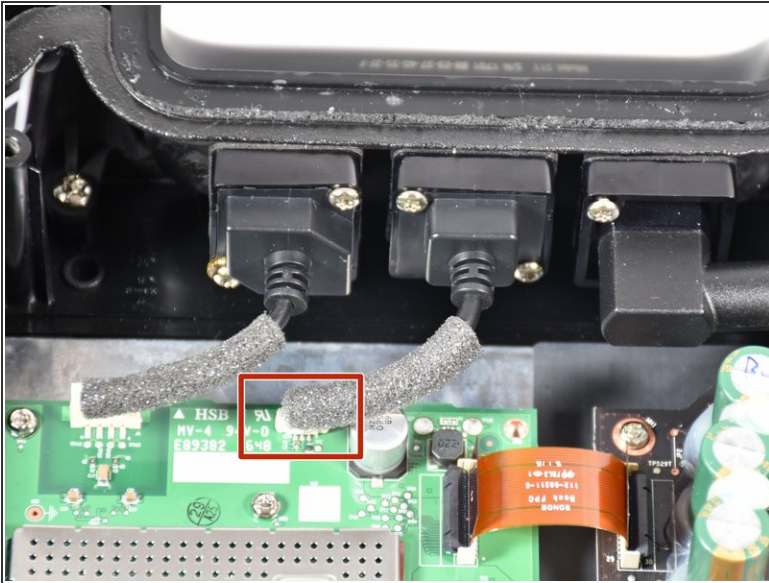


- Remove the metal plate with a [Opening Tool](#) by inserting underneath and prying upwards.

 Use a [metal spudger](#) if plastic openers do not work.

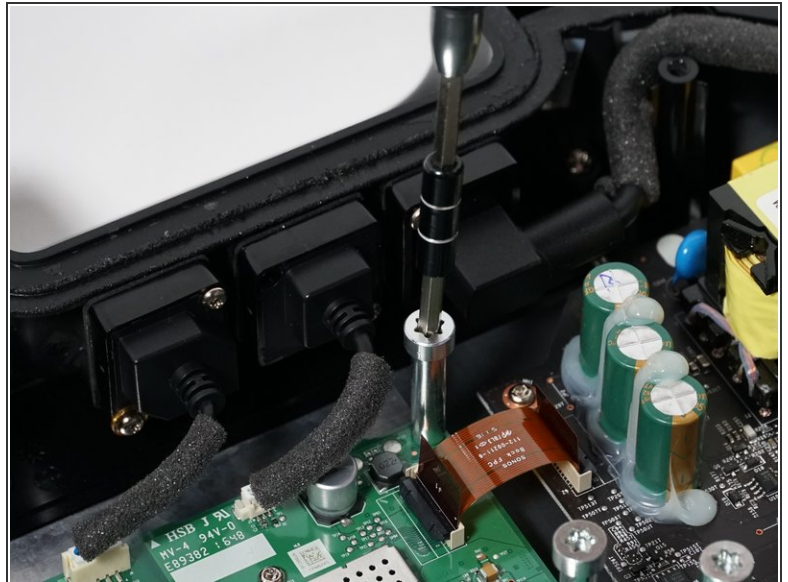
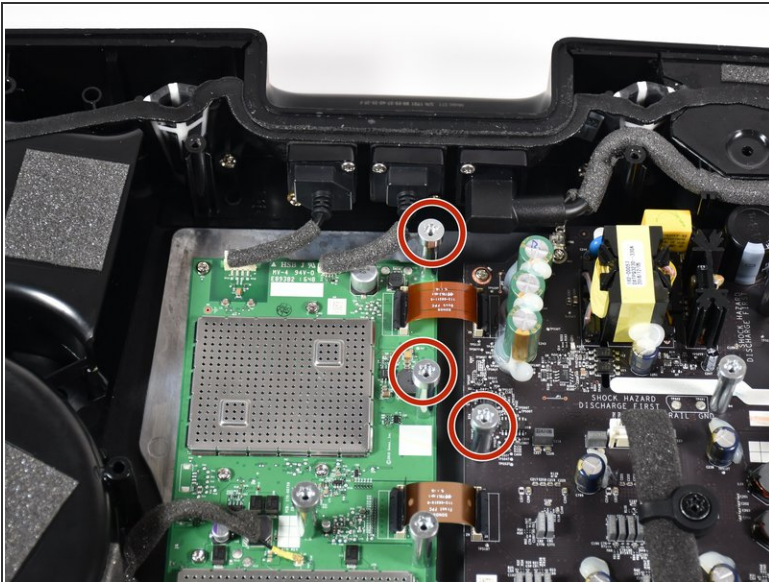
 Take care to avoid damaging the plastic or the device if using a metal spudger.

## Step 4 — Optical Audio Port



- Unplug the optical audio port from the main circuit board by pinching the white clip and pulling upward.

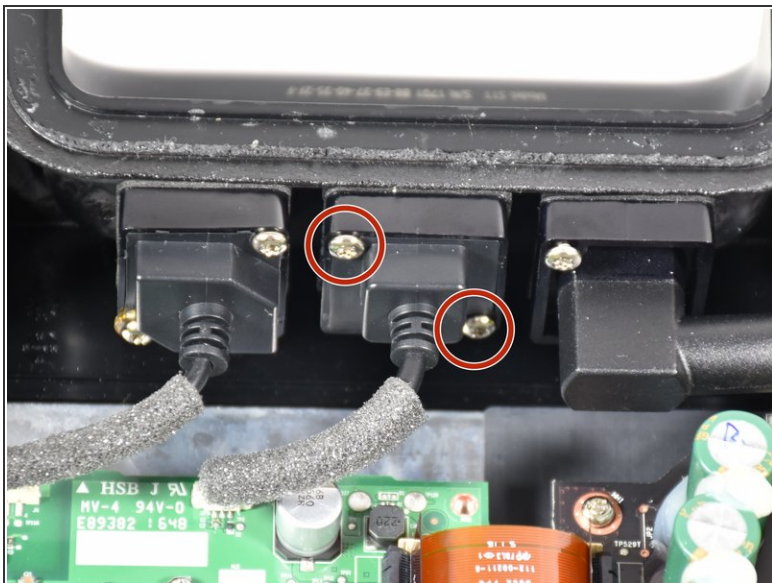
## Step 5



- Remove the three 38mm [T-55](#) screws preventing you from removing the Optical Audio Port screws by turning them counterclockwise.



## Step 6



- Remove the two 18mm [T-10](#) screws holding the Ethernet Port in place by turning them counterclockwise.

## Step 7



- Remove the Optical Audio Port from the housing by pinching the sides and pulling outward.

To reassemble your device, follow these instructions in reverse order.