



# Sonos Playbase Side Speaker Replacement

How to replace either side speaker in the Sonos Playbase if they are faulty.

Written By: James Andrews



---

## INTRODUCTION

The side speakers on the Sonos Playbase are necessary to create simulated surround sound. If certain channels are missing or low quality, the side speakers may need replacement.

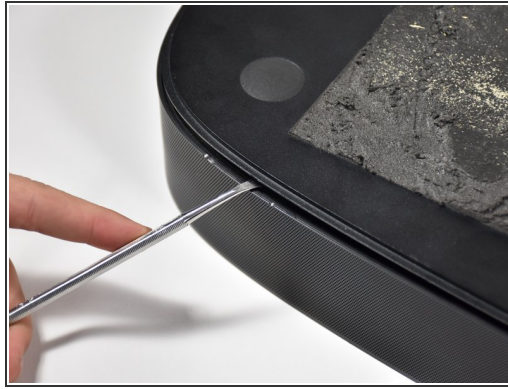
---



### TOOLS:

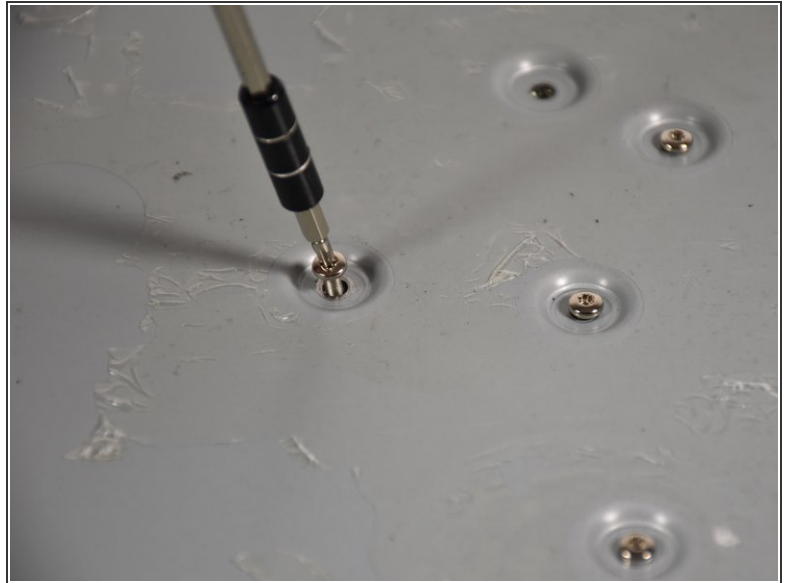
- [T10 Torx Screwdriver](#) (1)
  - [T20 Torx Screwdriver](#) (1)
  - [iOpener](#) (1)
  - [iFixit Opening Tools](#) (1)
  - [Metal Spudger Set](#) (1)
  - [T-55 Torx Security Screwdriver](#) (1)
-

## Step 1 — Bottom Panel



- Turn the Playbase upside down so that the "Sonos Playbase" imprint is face up.
- Remove the bottom panel with an [Opening Tool](#) by inserting underneath and prying upwards.
- ⓘ Melt the adhesive with an [iOpener](#) for ease of opening
- ⓘ Use a [Metal Spudger](#) if the plastic spudgers do not work.
- ⚠ Take care to avoid damaging the plastic or the device if using a metal spudger.

## Step 2




- Remove the fourteen 11mm [T-10](#) screws by turning counter-clockwise.
  - Remove the seven 44mm [T-20](#) screws by turning counter-clockwise.
  - Remove the twenty-two 34mm [T-20](#) screws by turning counter-clockwise.
- ☐ Record where each screw belongs for easier reassembly.



### Step 3



- Remove the metal plate with a [Opening Tool](#) by inserting underneath and prying upwards.

 Use a [metal spudger](#) if plastic openers do not work.

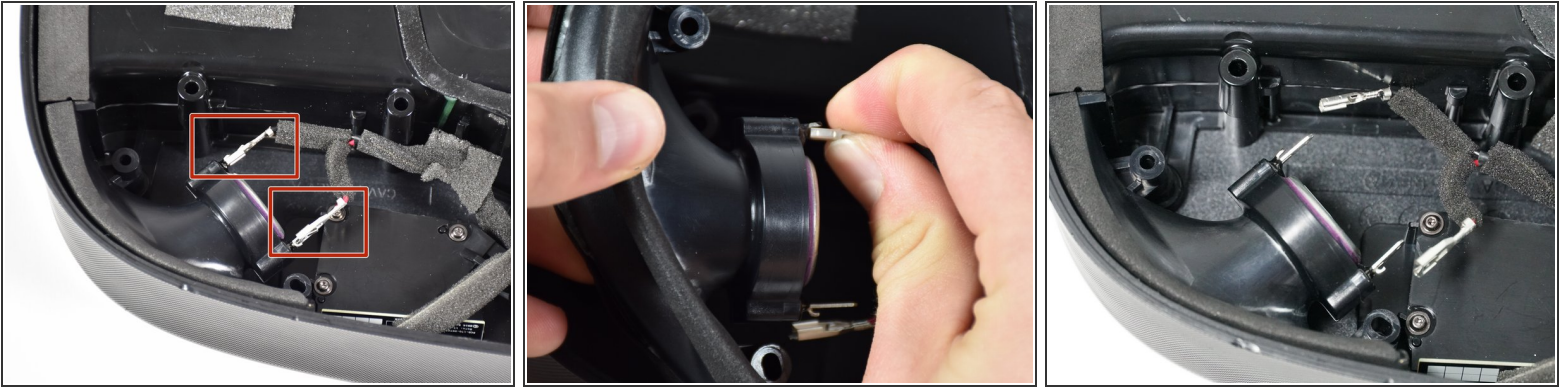
 Take care to avoid damaging the plastic or the device if using a metal spudger.

### Step 4 — Side Speakers



- Remove the 24 mm [T-10](#) screw by turning counter clockwise.
- Remove the 41 mm [T-55](#) screw by turning counter clockwise.

## Step 5



- Unclip the wiring by pulling away from the side speaker.

 See [Recognizing & Disconnecting Cable Connectors](#) for more information

## Step 6



- Remove the speaker.

To reassemble your device, follow these instructions in reverse order.