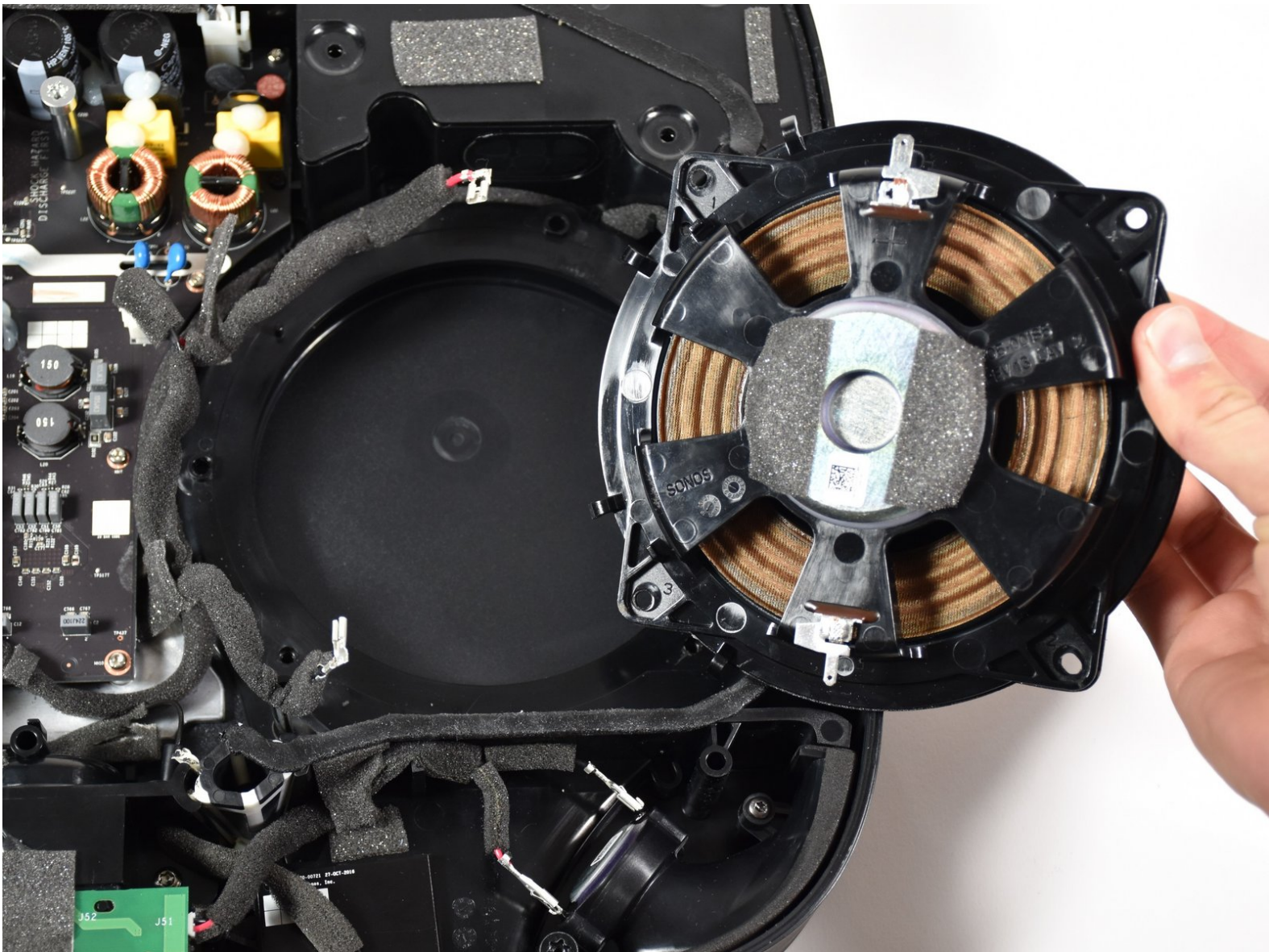




Sonos Playbase Subwoofer Replacement

How to replace a Sonos Playbase subwoofer.

Written By: Clayton Lipping



INTRODUCTION

If the bass in your Sonos Playbase is weak or distorted, the subwoofer may be failing or non-functional. This guide shows you how to remove and replace the subwoofer.

TOOLS:

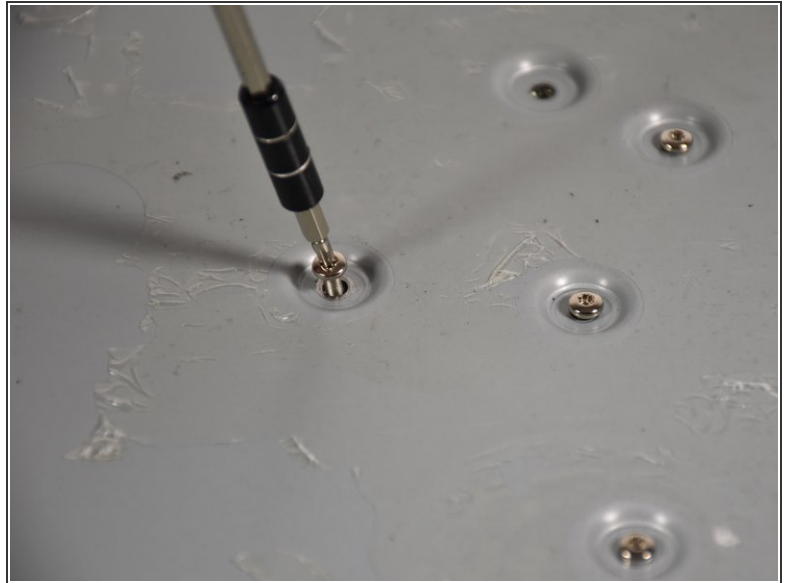
- [T10 Torx Screwdriver](#) (1)
 - [T20 Torx Screwdriver](#) (1)
 - [Metal Spudger Set](#) (1)
 - [iOpener](#) (1)
 - [T-55 Torx Security Screwdriver](#) (1)
-

Step 1 — Bottom Panel



- Turn the Playbase upside down so that the "Sonos Playbase" imprint is face up.
- Remove the bottom panel with an [Opening Tool](#) by inserting underneath and prying upwards.
- ⓘ Melt the adhesive with an [iOpener](#) for ease of opening
- ⓘ Use a [Metal Spudger](#) if the plastic spudgers do not work.
- ⚠ Take care to avoid damaging the plastic or the device if using a metal spudger.

Step 2





- Remove the fourteen 11mm [T-10](#) screws by turning counter-clockwise.
 - Remove the seven 44mm [T-20](#) screws by turning counter-clockwise.
 - Remove the twenty-two 34mm [T-20](#) screws by turning counter-clockwise.
- ☐ Record where each screw belongs for easier reassembly.

Step 3

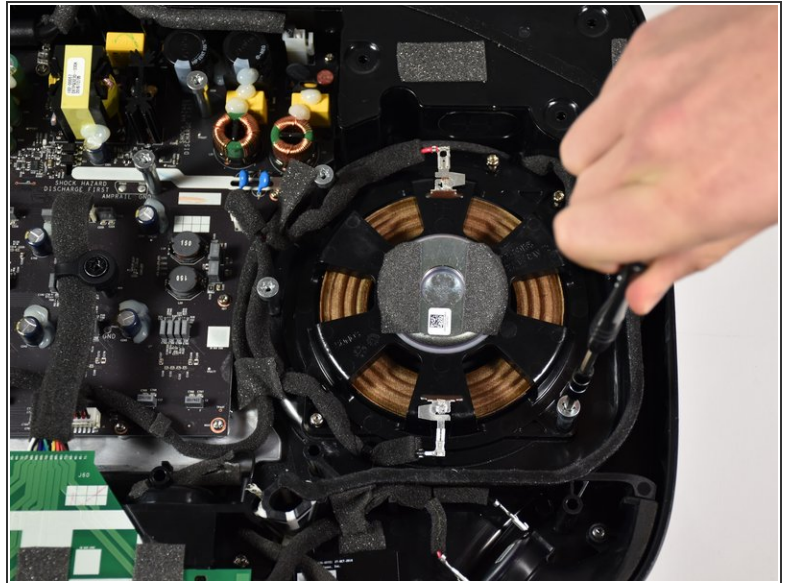
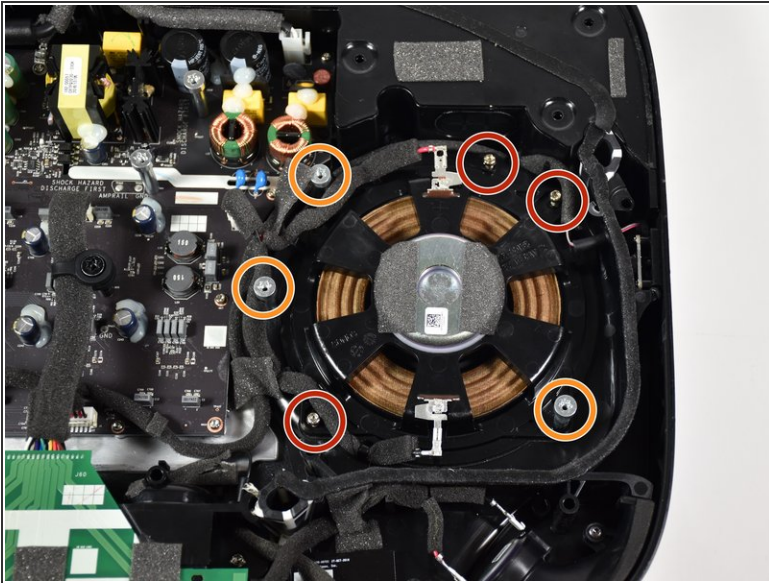


- Remove the metal plate with a [Opening Tool](#) by inserting underneath and prying upwards.

 Use a [metal spudger](#) if plastic openers do not work.

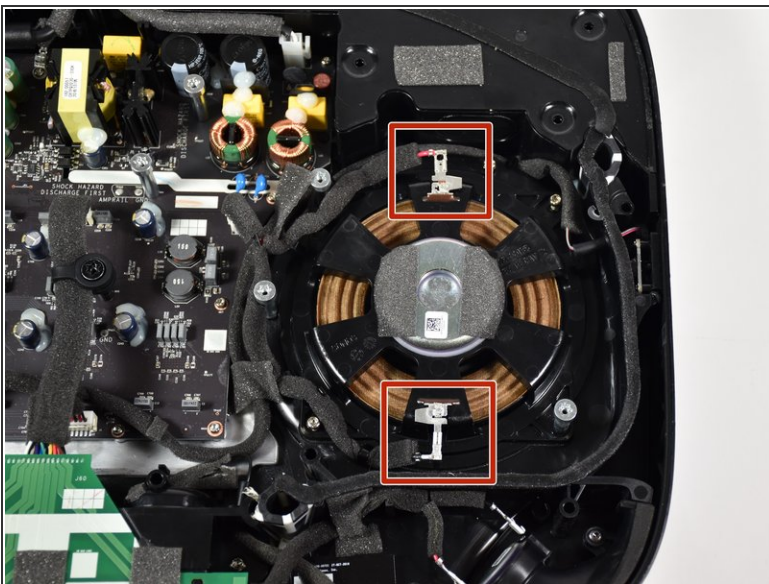
 Take care to avoid damaging the plastic or the device if using a metal spudger.

Step 4 — Subwoofer



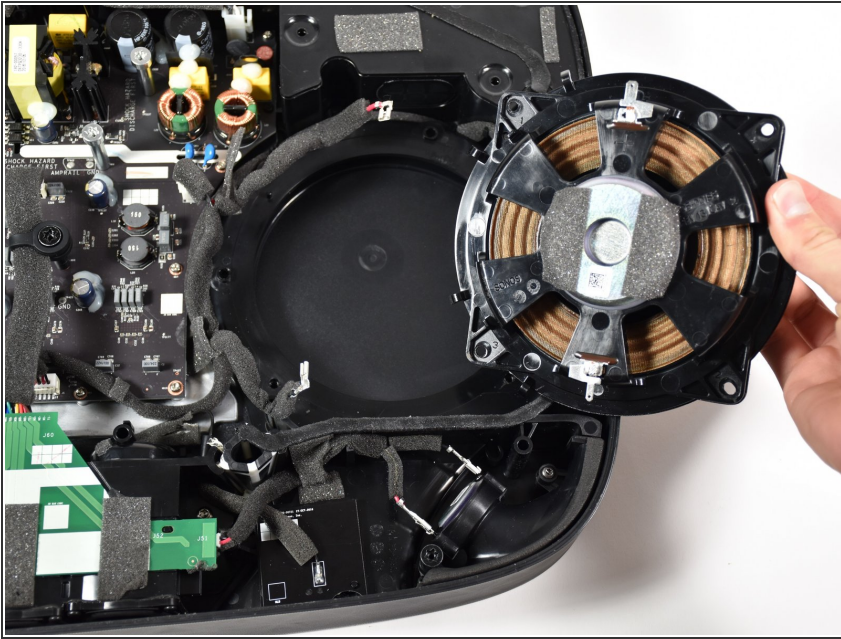
- Remove the three 18mm [T-20](#) length screws by turning counter-clockwise and pulling up.
- Remove the three 38mm [T-55](#) length screws by turning counter-clockwise and pulling up.

Step 5



- Unclip the red and black wiring from the subwoofer by pulling them away from the subwoofer.

Step 6



- Remove the subwoofer by gently lifting it up.

To reassemble your device, follow these instructions in reverse order.