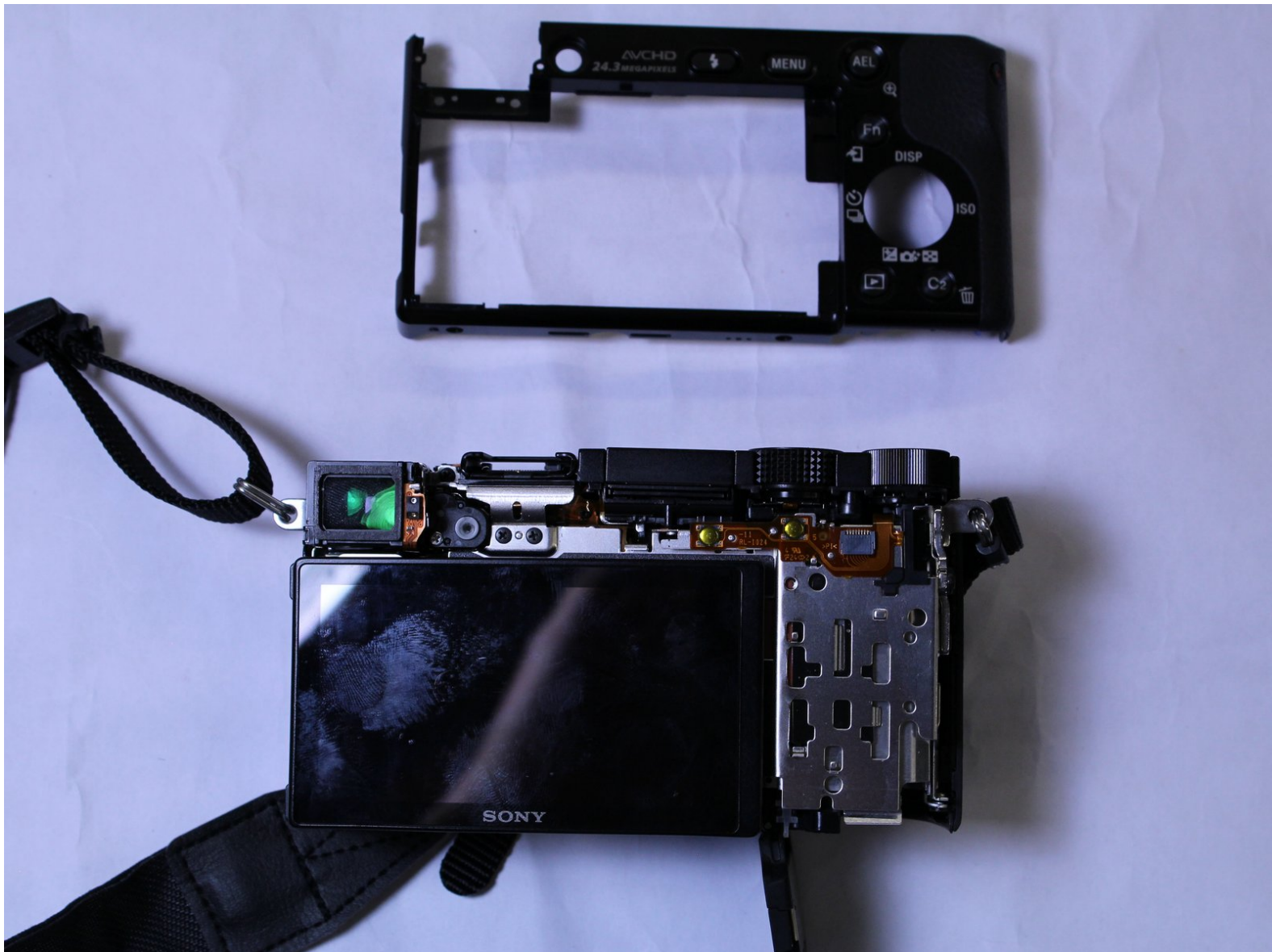




Sony α6000 Back Case Replacement

Guide detailing the removal of a broken and/or worn out back case on the Sony a6000.

Written By: Ryan Bilitski



INTRODUCTION

This guide will provide you with a detailed process on how to replace the back case of a Sony a6000 camera. Prior to replacing the case, make sure to remove the battery. Steps 1-4 will guide you on how to take out the battery and steps 5-12 guide you on how to replace the back case. The recommended tools for this procedure are a screwdriver, opening tools, a magnetic project mat, and gloves.



TOOLS:

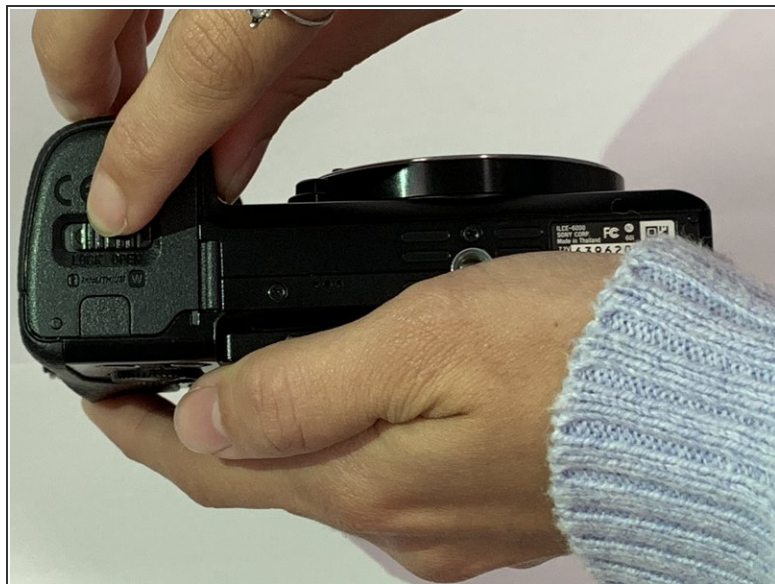
- [Phillips #00 Screwdriver](#) (1)
 - [iFixit Opening Tools](#) (1)
 - [Magnetic Project Mat](#) (1)
To hold small screws.
 - [ESD Gloves](#) (1)
-

Step 1 — Battery



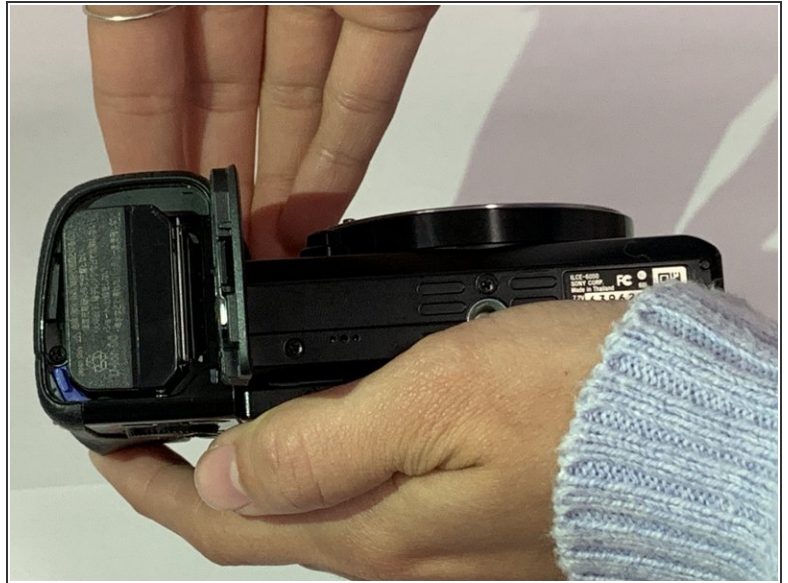
- Begin by placing the camera facing upside down.

Step 2



- Slide the notched locking bar on the battery compartment from LOCK to OPEN.

Step 3



- Push the small blue bar horizontally off of the battery.

Step 4



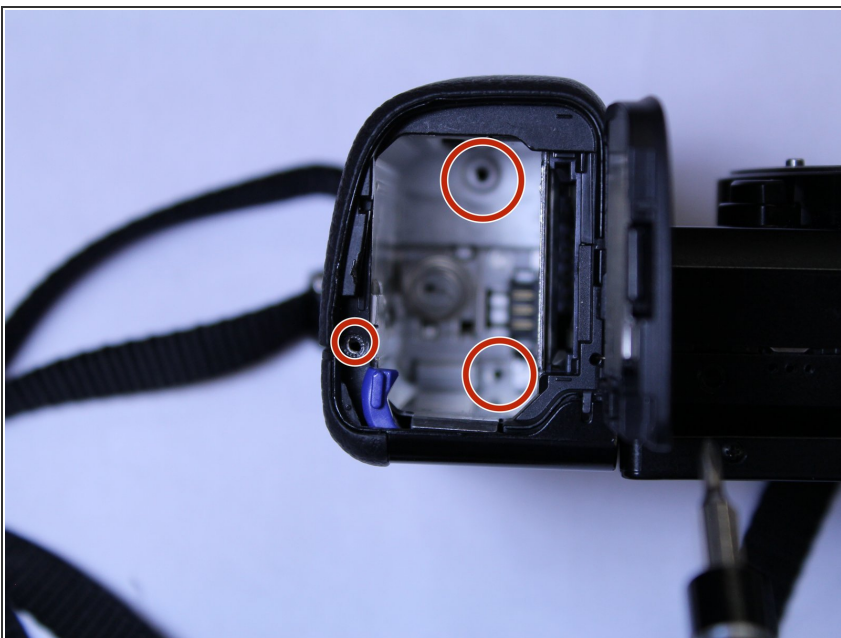
- Extract the battery.

Step 5 — Back Case



- Position the camera with the bottom facing upwards and the lens facing away from you.
- Slide the notched locking bar on the battery compartment from LOCK to OPEN.

Step 6



- Once the battery is removed, use a Phillips #00 screwdriver to remove the three screws at the bottom of the battery compartment.

Step 7



- Use the Phillips #00 screwdriver to remove the screws located next to the camera strap.

⚠ There may be screws on either side by the camera strap mounts. If removing the screw on the left side doesn't sufficiently loosen the case, be sure to check for a screw on the other side before resorting to excessive force.

Step 8



- Position the camera with the battery housing facing upwards.
- Remove the two screws on the bottom of the camera using the Phillips #00 screwdriver.

Step 9



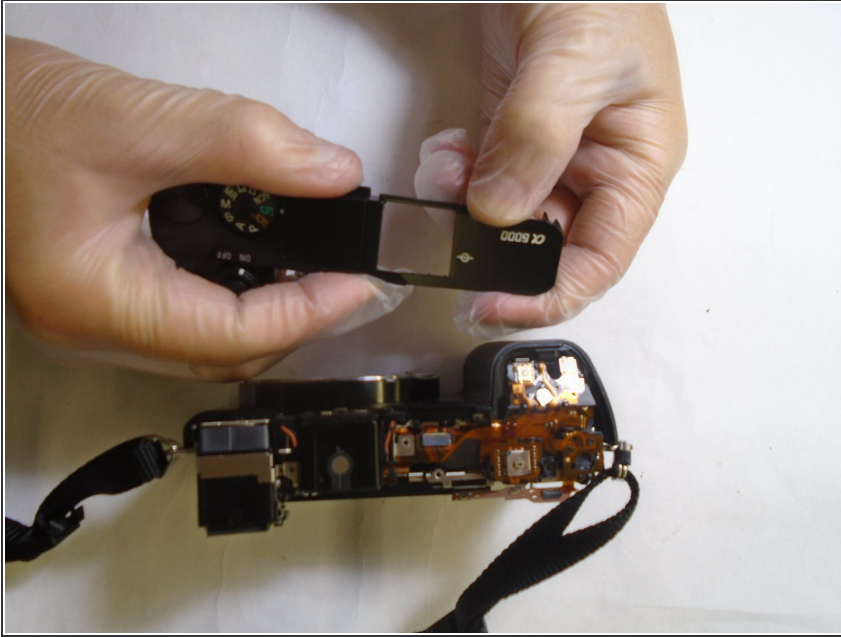
- Position the camera with the flash assembly facing upwards.
- Remove the screw located underneath with a Phillips #00 screwdriver.

Step 10



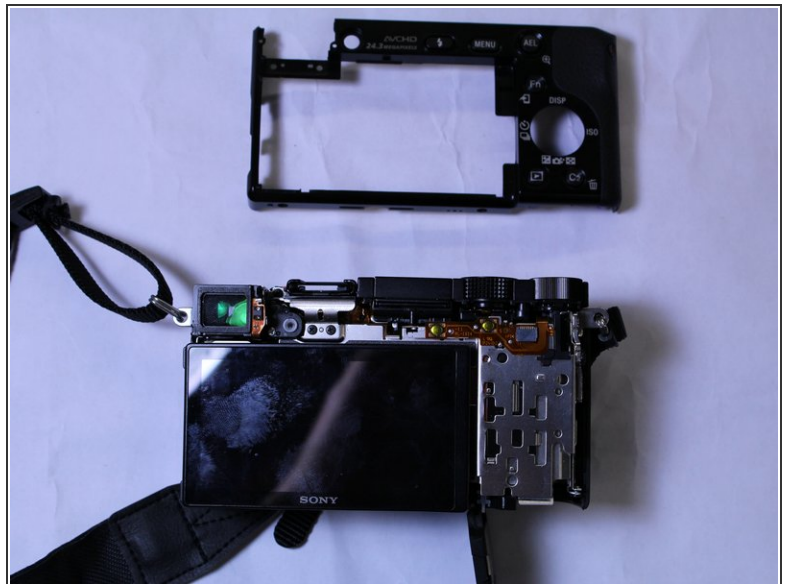
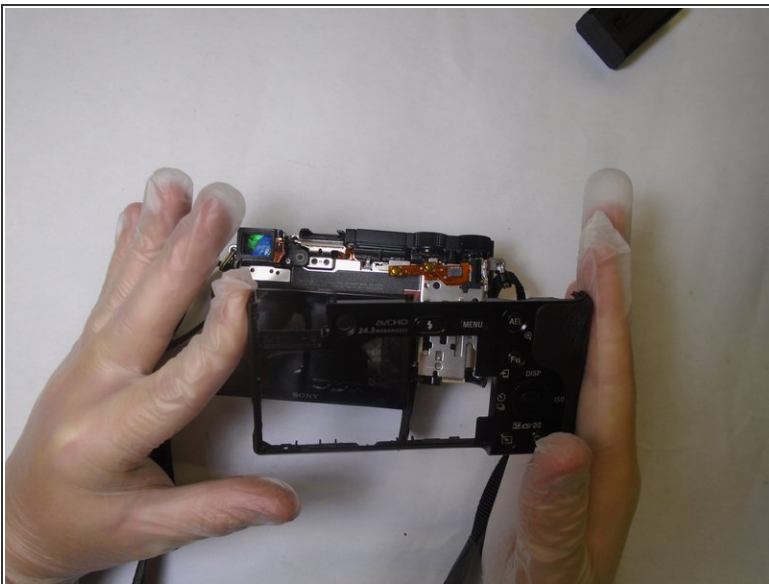
- Pull back the LCD screen.
- Remove the three screws directly underneath using the Phillips #00 screwdriver.

Step 11



- Gently pop off the top case of the camera using your fingers or a plastic opening tool.
- ⚠ If using a plastic opening tool, ensure that the pressure is being applied to the plastic rather than the metal.

Step 12



- Position the camera with the LCD screen facing upwards.
- Pull back the LCD screen.
- Gently remove the back case guiding it around the LCD screen.

To reassemble your device, follow these instructions in reverse order.