



Sony α6000 LCD Screen Replacement

How to remove the LCD screen for a Sony a6000 camera.

Written By: Rohn Albertson



INTRODUCTION

LCD stands for liquid crystal display, which is a used for displays in different devices. LCD is thinner than the older technology that provides better quality of picture. This guide will successfully show you how to replace the LCD screen of your Sony a6000 camera.



TOOLS:

- [Phillips #00 Screwdriver](#) (1)
-

Step 1 — LCD Screen



- Remove the two 1.75mm Phillips #00 screws located on the bottom border of the LCD screen.

Step 2



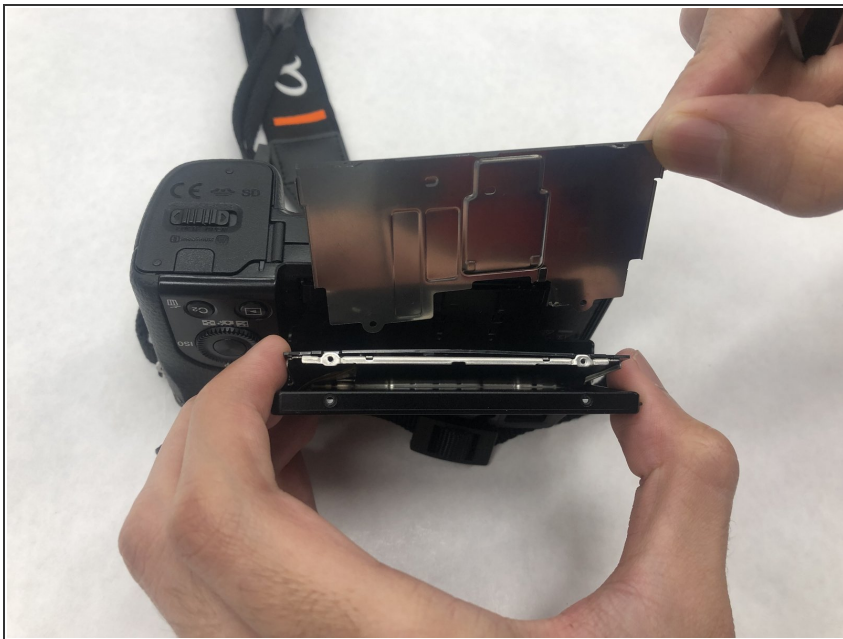
- Remove the two 1.75mm Phillips #00 screws located on the back side of the LCD screen.

Step 3



- Carefully separate the bottom border of the frame from the back surface of the LCD screen.

Step 4



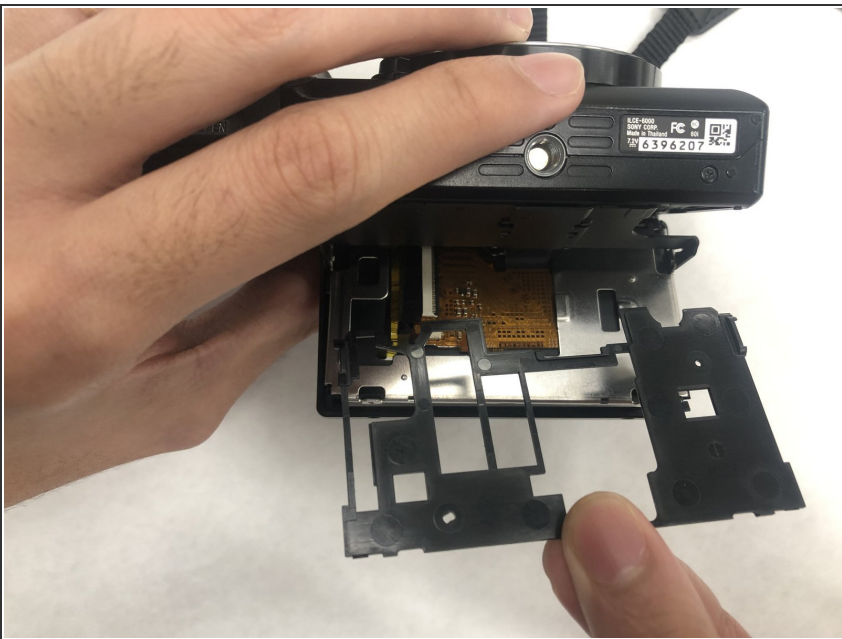
- Remove the silver shield from the back side of the LCD screen.

Step 5



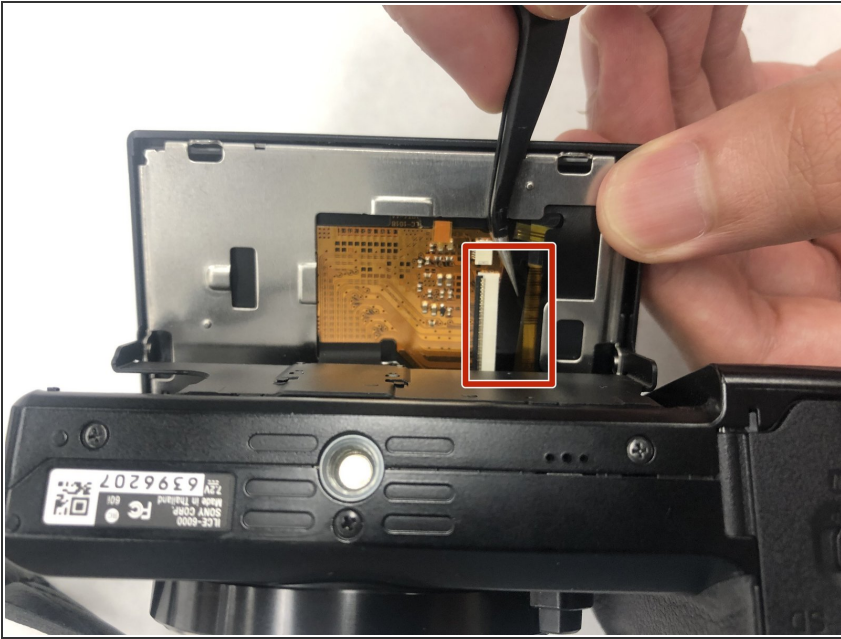
- Remove the smaller bracket covering the bottom portion of the control board.

Step 6



- Carefully remove the spacer from behind the LCD screen.

Step 7



- Detach the ribbon from the socket with a pair of tweezers.

Step 8



- Pull the LCD screen away from the camera and set aside.

To reassemble your device, follow these instructions in reverse order.