



Sony α6500 LCD Screen Replacement

This guide will help you replace the main LCD screen in a Sony α6500 model ILCE-6500.

Written By: Micah Fitzgerald



INTRODUCTION

In order to interface with the camera and access its functions, it is important to have a working LCD screen. If your LCD screen has problems such as distortion and flickering, [it may be damaged](#) and in need of replacement. This guide will walk you through disassembling the camera and removing the LCD screen; avoid tearing the flat ribbon cables exposed in the process. When removing the screen from the plastic frame, you will break the adhesive attaching it. If desired, you may reglue the replacement screen to the frame with any super glue or epoxy. This guide requires JIS 00 and 000 screwdrivers, opening tools, a spudger, and tweezers.



TOOLS:

- [Spudger](#) (1)
- [Tweezers](#) (1)
- [iFixit Opening Tools](#) (1)
- [JIS #000 Screwdriver](#) (1)
- [JIS #00 Screwdriver](#) (1)



PARTS:

- [Sony α6500 LCD screen](#) (1)

Step 1 — Battery



- Verify the camera is powered off by setting the switch to OFF.

Step 2



- Flip the camera upside down.
- Slide the battery compartment lock to OPEN to unlock it.

Step 3



- Push the blue lever aside to release the battery.

Step 4



- Remove the released battery from the compartment.

Step 5 — LCD Screen

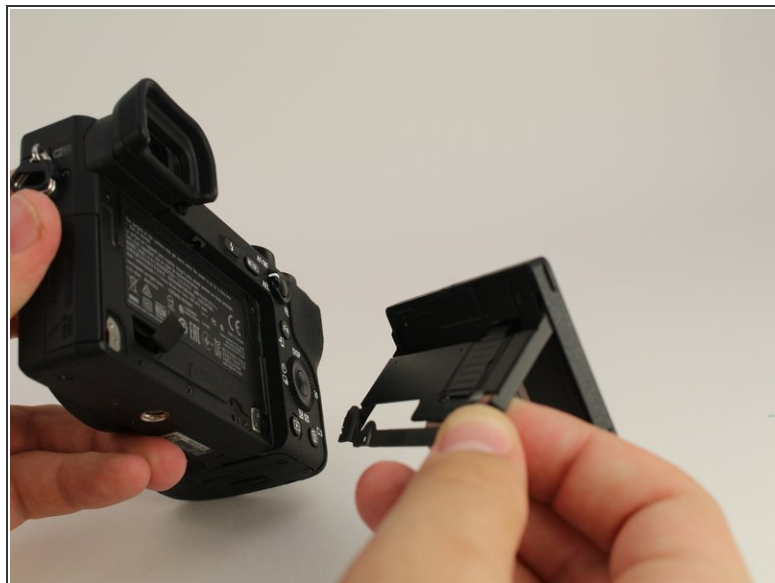


i To access the LCD assembly we need to remove the screws attaching its hinge to the camera body.

- Remove four 3mm JIS 000 screws.
- Remove one 3mm JIS 00 screw.

! After dismounting the screen hinge be careful to not tear the black wire ribbon connecting the screen to the camera body.

Step 6



- Remove the screen hinge from the camera.

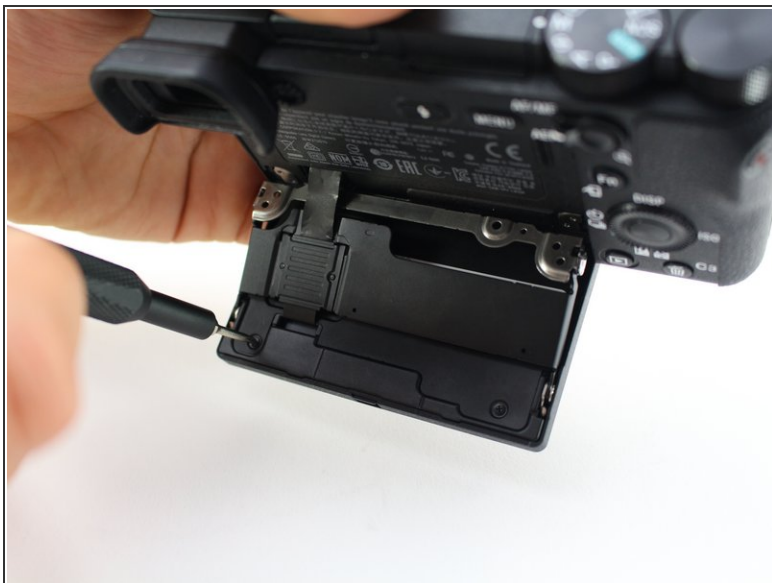
⚠ Be careful to not tear the black flat cable connecting the lcd screen to the main body of the camera. This particular camera's cable has been cut for demonstration purposes.

Step 7



- Flip the LCD screen up.
- Remove two 2mm JIS 000 screws on the bottom edge.

Step 8



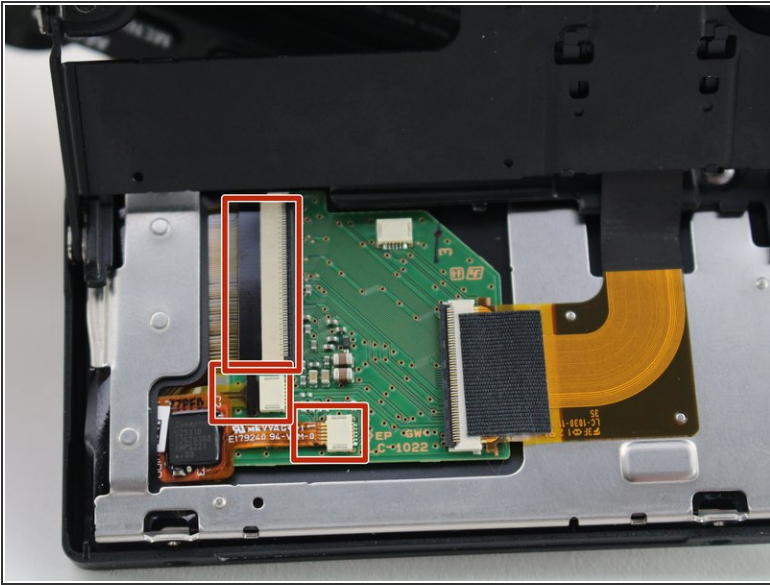
- Flip the LCD screen down to access the back side.
- Remove two 2mm JIS 000 screws to release the back panel of the screen.

Step 9



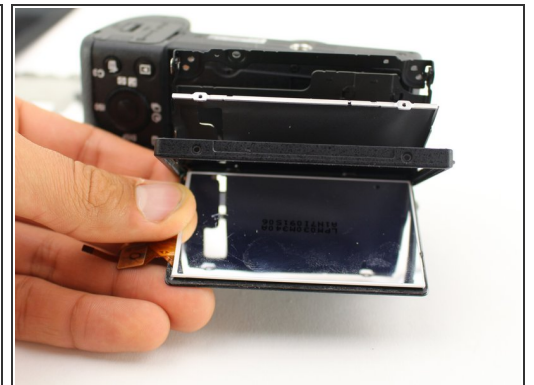
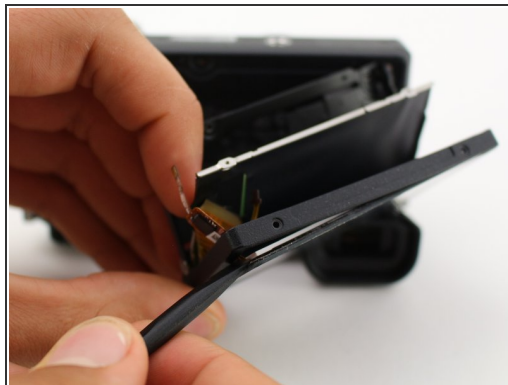
- Use the opening tool to pry open the back panel.
- Remove the black plastic spacer laying on top of the circuit board.

Step 10



- Carefully unplug the three wire ribbons from the circuit board with tweezers.
- ⓘ Likely you will need to wiggle the ribbons for a while before they come loose.
- ⚠ The ribbons can rip very easily, grasp the black plastic with the tweezers, on the two top ribbons, not the orange wires.

Step 11



- Slide the spudger around all sides of the screen's plastic frame, gently breaking the adhesive.
- Remove the screen from the camera by prying it out.

To reassemble your device, follow these instructions in reverse order.