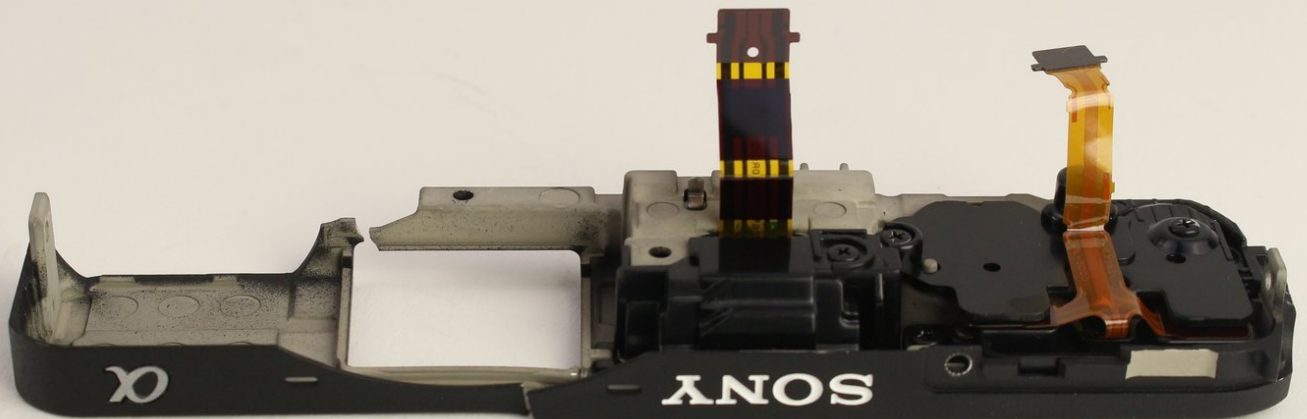




# Sony α6500 Top Assembly Replacement

How to replace the top of the Sony α6500 camera.

Written By: Micah Fitzgerald



## INTRODUCTION

If the top of your camera is damaged or broken, this guide will walk you through its replacement. The removal of the top of the camera is also a prerequisite for the replacement of the flash unit, memory card reader, motherboard, viewfinder glass, and other complex components. You will require a JIS 0 screwdriver, JIS 00 screwdriver, JIS 000 screwdriver, tweezers, and opening tools.



### TOOLS:

- [JIS #0 Screwdriver](#) (1)
- [JIS #00 Screwdriver](#) (1)
- [JIS #000 Screwdriver](#) (1)
- [iFixit Opening Tools](#) (1)
- [Tweezers](#) (1)

## Step 1 — Battery



- Verify the camera is powered off by setting the switch to OFF.

## Step 2



- Flip the camera upside down.
- Slide the battery compartment lock to OPEN to unlock it.

### Step 3



- Push the blue lever aside to release the battery.

### Step 4



- Remove the released battery from the compartment.

## Step 5 — Top Assembly



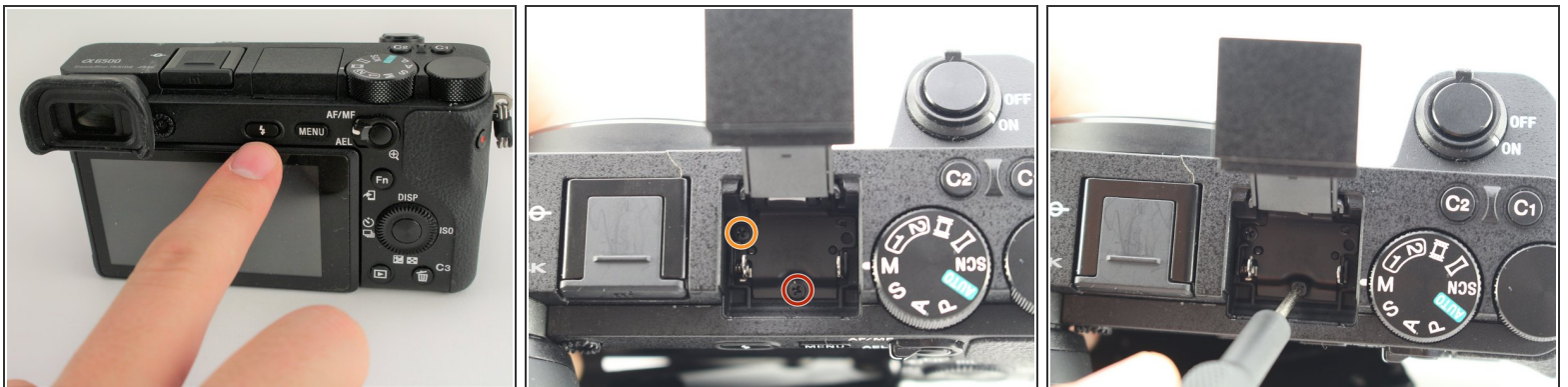
- i** To access the back of the camera remove the screws attaching the LCD screen hinge to the camera body.
- Remove four 3mm JIS 000 screws.
  - Remove one 3mm JIS 00 screw.
- !** After dismantling the screen hinge be careful to avoid tearing the black wire ribbon connecting the screen to the camera body.

## Step 6



- Grasp the viewfinder eyecup; slide it up and off the viewfinder.

## Step 7



- Press the flash popup button on the back of the camera.
- Remove one 5mm JIS 00 screw from inside the flash compartment.
- Remove one 4mm JIS 00 screw.

## Step 8



**i** To remove the top of the camera you must remove the back first.

- Remove the 2.5mm JIS 00 screw from the side of the camera near the viewfinder.
- Use the opening tool to pry off the small cover.
  - Remove two 2.5mm JIS 00 screws from underneath the cover.
  - Remove a 5mm JIS 00 screw from underneath the cover.

## Step 9



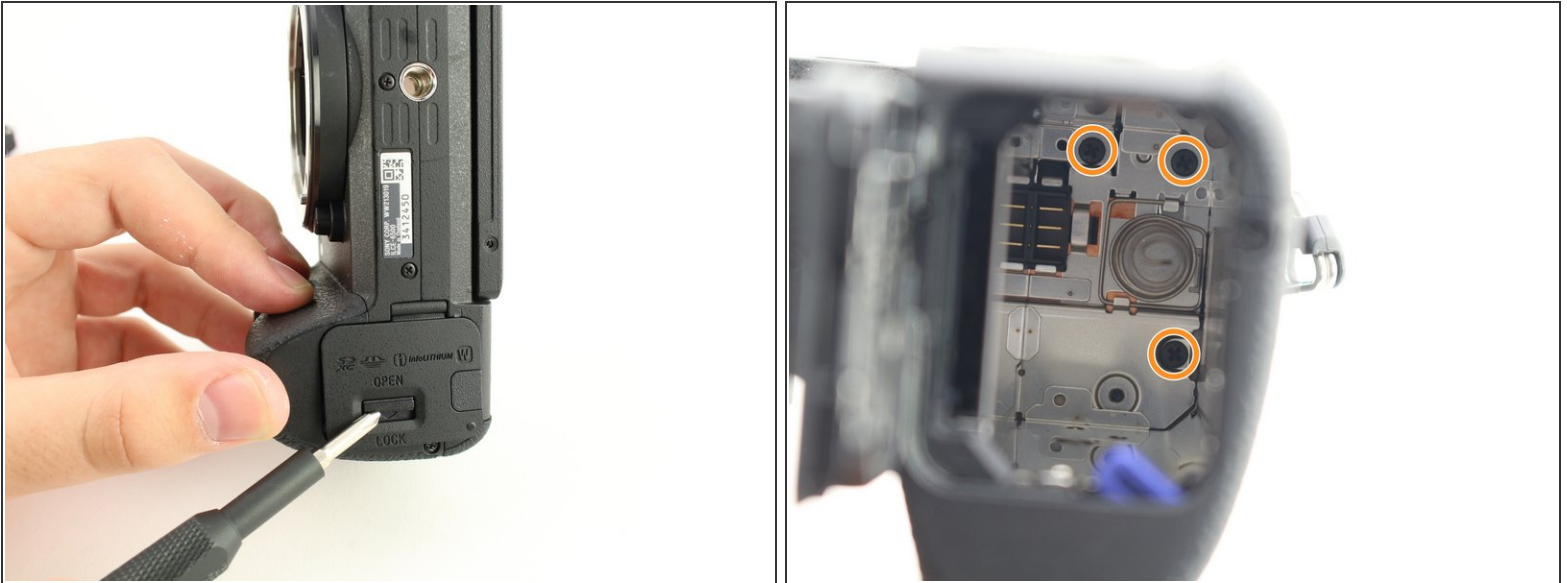
- Remove three 2.5mm JIS 0 screws from the back face of the camera.
- Remove one 4mm JIS 00 screw from the underside of the lip that overhangs the back of the camera.

## Step 10



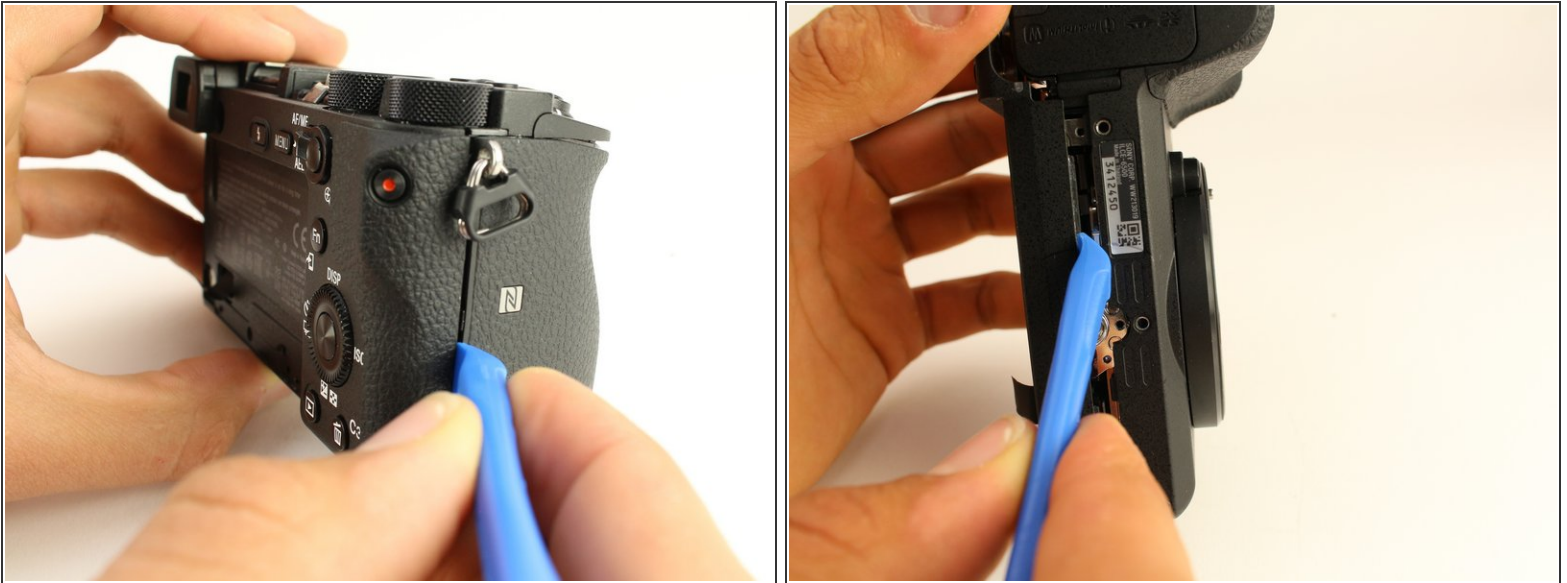
- Remove four 4mm JIS 0 screws from the bottom of the camera.

## Step 11



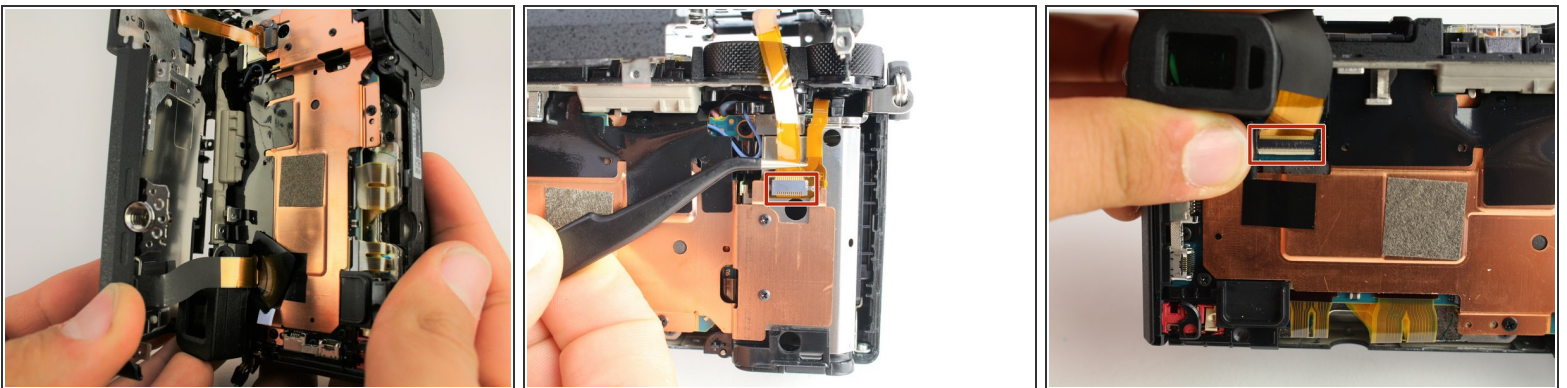
- Flip the battery lock switch to open and open the battery compartment.
- Remove three 2.5mm JIS 00 screws from the top of the battery compartment.
- ⓘ You may need a longer or thinner screwdriver to reach the screws in the battery compartment.

## Step 12



- Use the plastic opening tool to begin prying off the back of the camera from the side.
- Continue to loosen the back until you can open it from the bottom.

## Step 13



- Open the back of the camera.
- Use tweezers to remove two ribbon connectors from underneath the back. One connects to the LCD display and the other connects to the right side behind the battery compartment.

⚠ Ribbon connectors can tear easily. Grasp the plastic ends (not the ribbon) when removing.

## Step 14



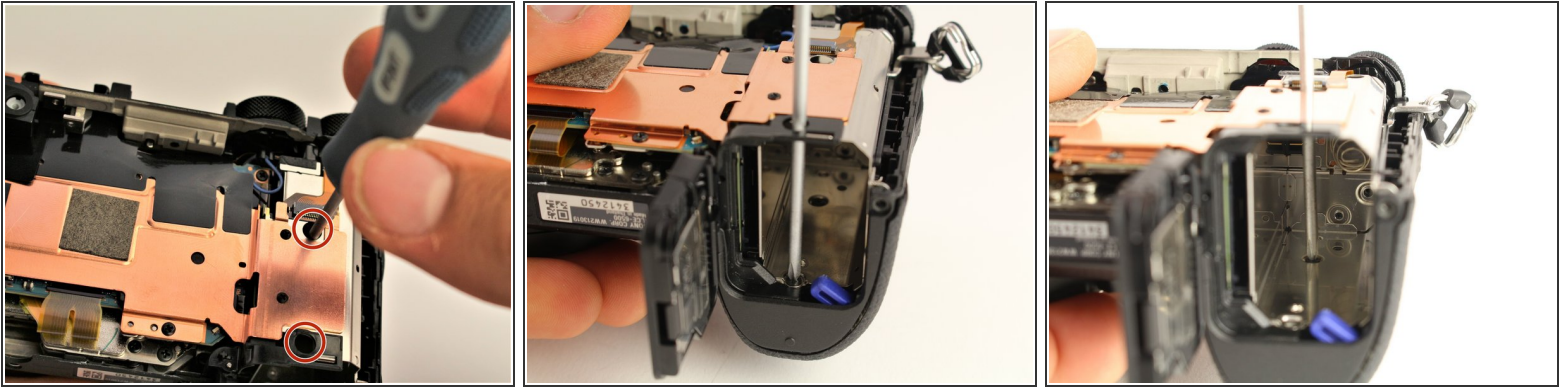
- Use the plastic opening tool to peel down the rubber grip around the handle at least 1 cm.
  - ❗ The adhesive holding the rubber grip down should be strong enough to reattach when you are done. If not, you may need an adhesive to reglue it.
- Remove one 3mm JIS 000 screw from underneath the rubber grip on the right side.
- Remove one 4mm JIS 000 screw from the left side.

## Step 15



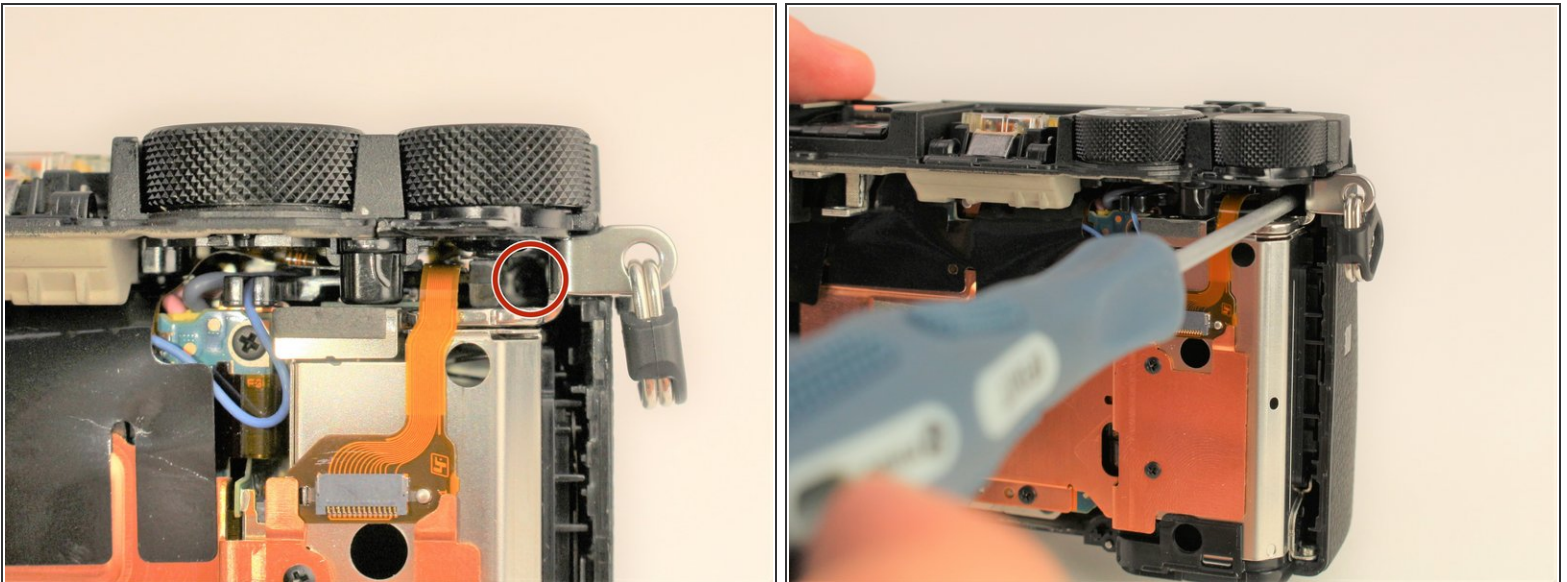
- ❗ The last screws holding the top on can be accessed once the back of the camera is removed.
- Remove one 2.5mm JIS 00 screw from the top next to the flash mount.

## Step 16



- Insert a long, thin JIS 00 screwdriver through the two holes and into the battery compartment; remove the two 5mm JIS 00 screws inside it.

## Step 17



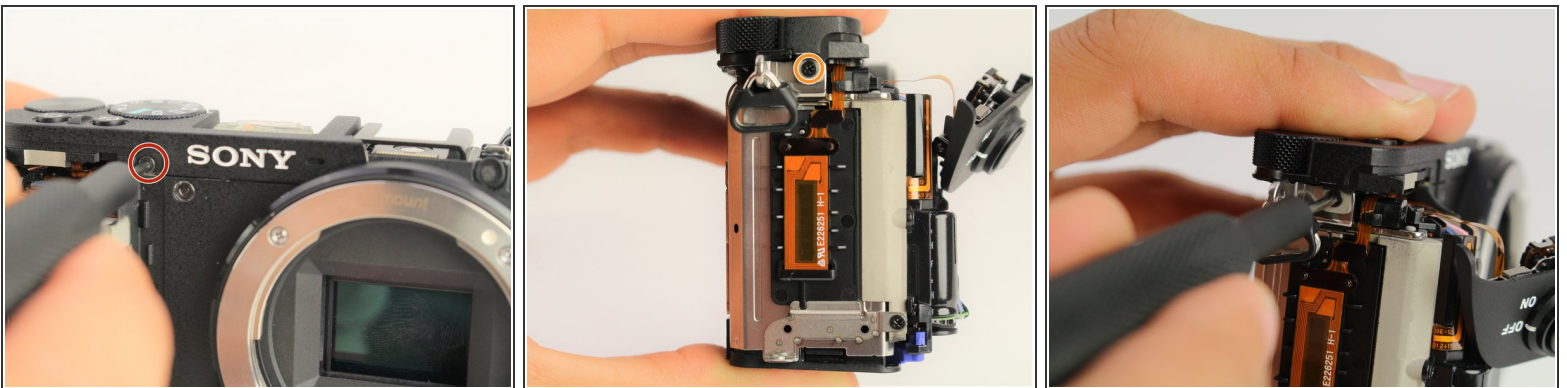
- Use the long, thin, screwdriver to remove one 5mm JIS 00 screw inside the camera accessible below the dials from the back.

## Step 18



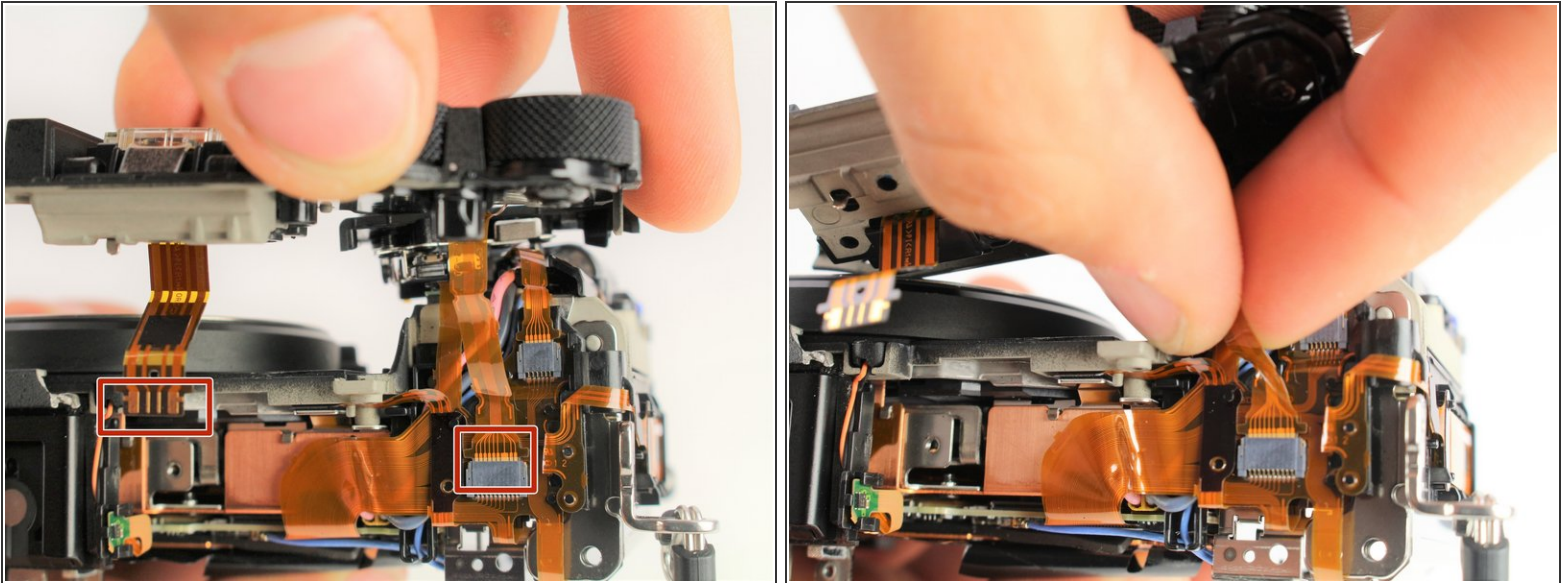
- Use the plastic opening tool to gently lift up the shutter button assembly.
  - Grasp the front grip from the top and bottom and pull it off. It should come off easily with the shutter button out of the way.
- i** The shutter button will still be attached by one ribbon cable once the front grip is removed.

## Step 19



- Remove one 2.5mm JIS 00 screw from where the shutter button assembly used to be.
- Remove one 3mm JIS 00 screw from the side of the camera.

## Step 20



- Carefully unplug the two ribbon connectors attaching the top assembly to the rest of the camera.

To reassemble your device, follow these instructions in reverse order.