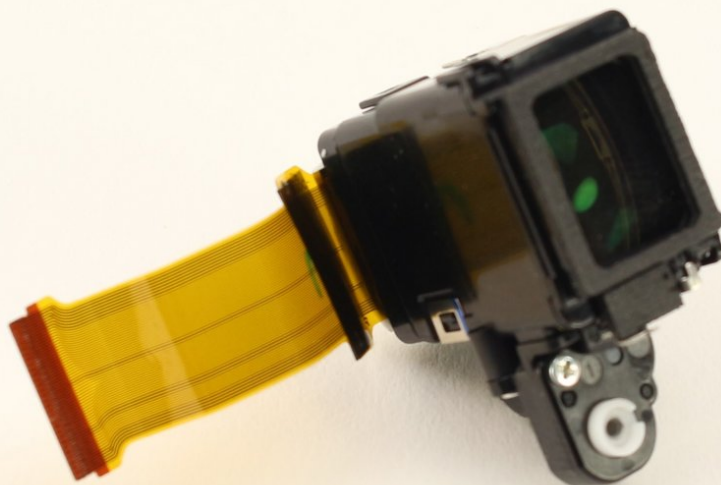




Sony α6500 Viewfinder Glass Replacement

This guide will help you replace the ViewFinder glass in a Sony α6500 model ILCE-6500.

Written By: Jackson Furie



INTRODUCTION

The viewfinder glass helps you frame the scene before taking the photo. A broken viewfinder glass will affect your ability to compose good pictures. This guide will walk you through the replacement of a broken viewfinder glass. Ensure that the problem with your viewfinder is not software related, and verify that the focus feature is working properly before considering replacement. The tools required for this replacement are a JIS 0 screwdriver, JIS 00 screwdriver, JIS 000 screwdriver, opening tools, spudger, and tweezers.

TOOLS:

- [JIS #0 Screwdriver](#) (1)
 - [iFixit Opening Tools](#) (1)
 - [Tweezers](#) (1)
 - [JIS #00 Screwdriver](#) (1)
 - [JIS #000 Screwdriver](#) (1)
 - [Spudger](#) (1)
-

Step 1 — Battery



- Verify the camera is powered off by setting the switch to OFF.

Step 2



- Flip the camera upside down.
- Slide the battery compartment lock to OPEN to unlock it.

Step 3



- Push the blue lever aside to release the battery.

Step 4



- Remove the released battery from the compartment.

Step 5 — Top Assembly



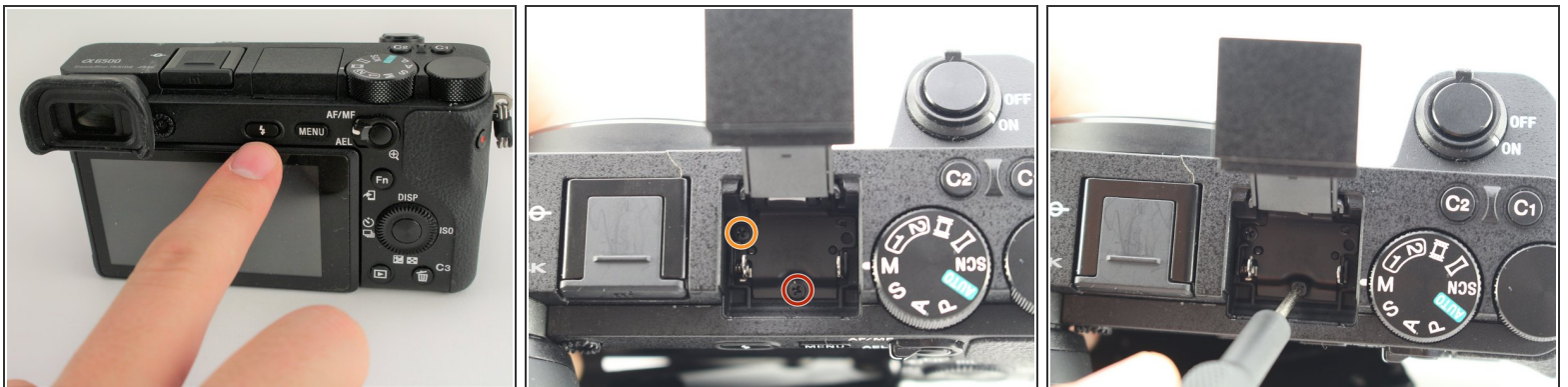
- i** To access the back of the camera remove the screws attaching the LCD screen hinge to the camera body.
- Remove four 3mm JIS 000 screws.
 - Remove one 3mm JIS 00 screw.
- !** After dismounting the screen hinge be careful to avoid tearing the black wire ribbon connecting the screen to the camera body.

Step 6



- Grasp the viewfinder eyecup; slide it up and off the viewfinder.

Step 7



- Press the flash popup button on the back of the camera.
- Remove one 5mm JIS 00 screw from inside the flash compartment.
- Remove one 4mm JIS 00 screw.

Step 8



i To remove the top of the camera you must remove the back first.

- Remove the 2.5mm JIS 00 screw from the side of the camera near the viewfinder.
- Use the opening tool to pry off the small cover.
 - Remove two 2.5mm JIS 00 screws from underneath the cover.
 - Remove a 5mm JIS 00 screw from underneath the cover.

Step 9



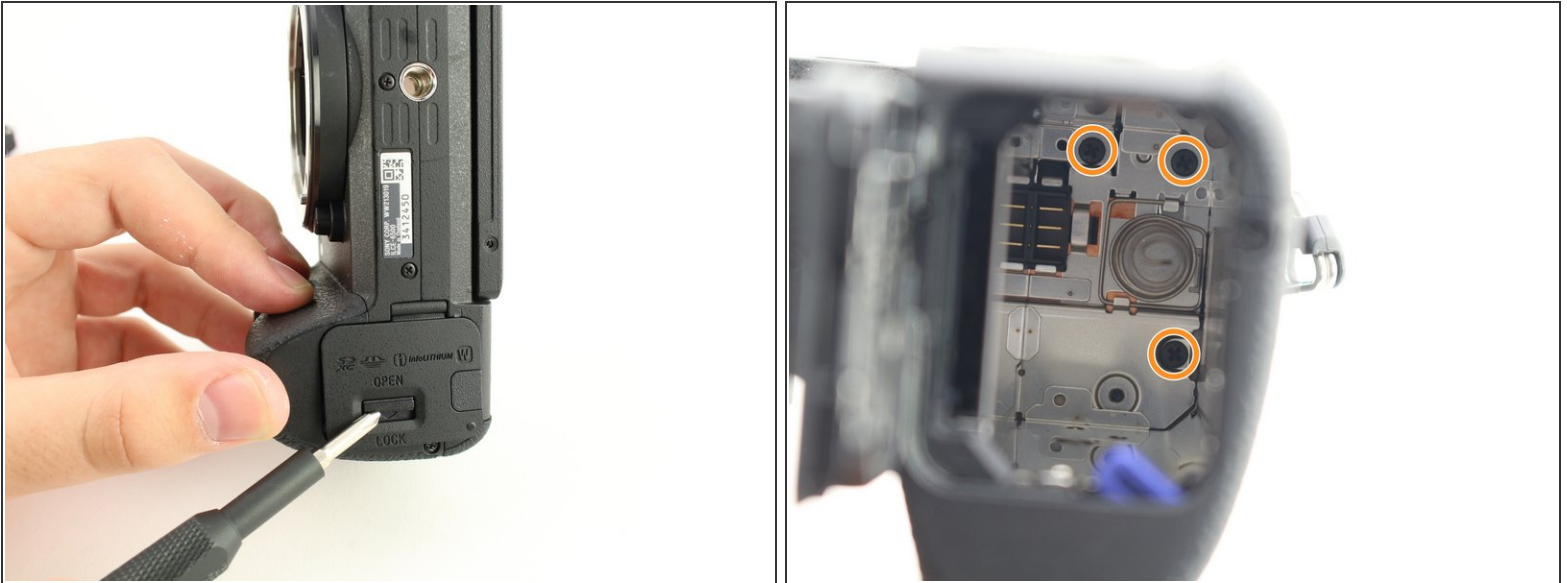
- Remove three 2.5mm JIS 0 screws from the back face of the camera.
- Remove one 4mm JIS 00 screw from the underside of the lip that overhangs the back of the camera.

Step 10



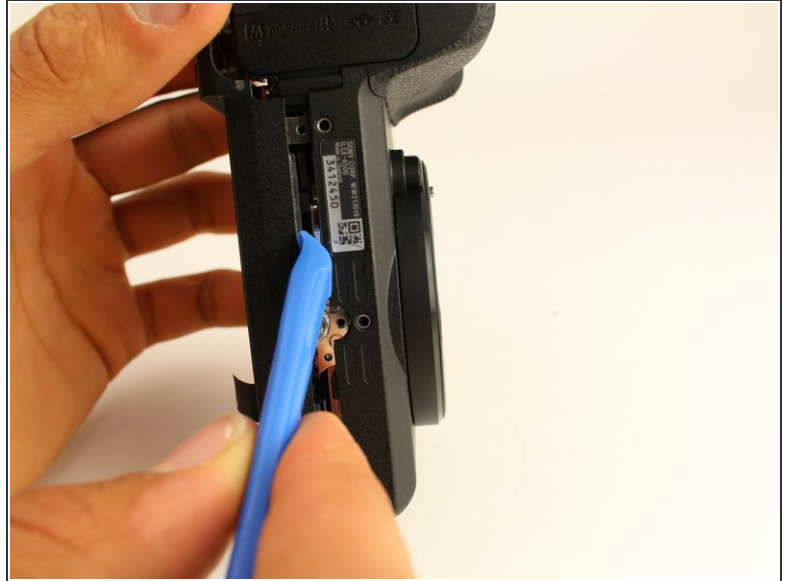
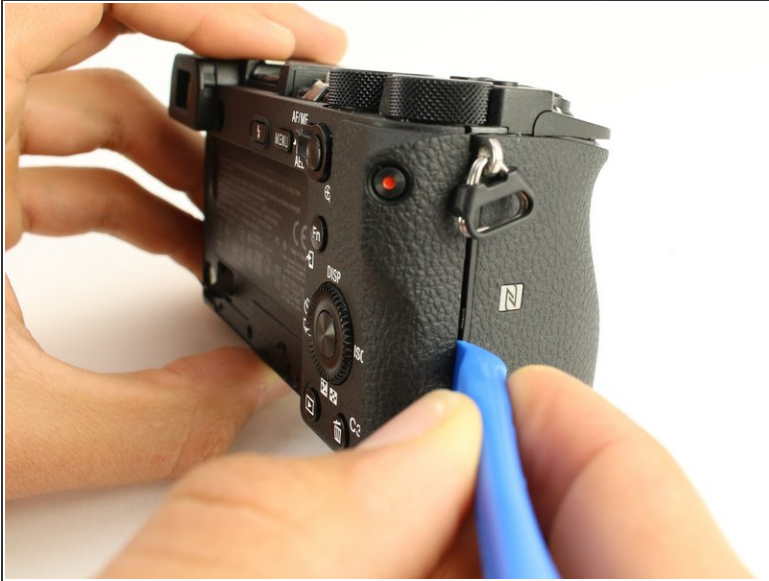
- Remove four 4mm JIS 0 screws from the bottom of the camera.

Step 11



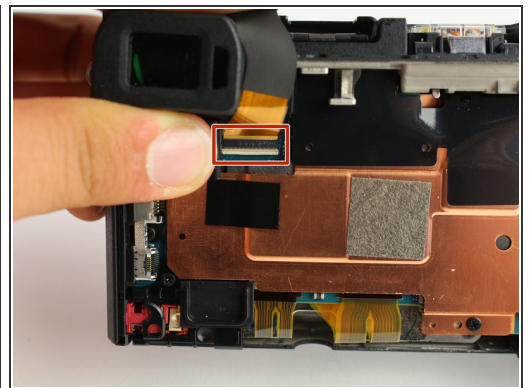
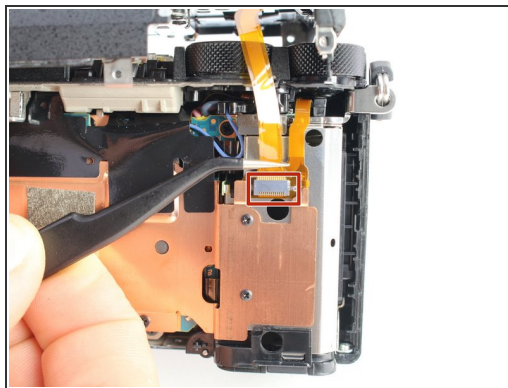
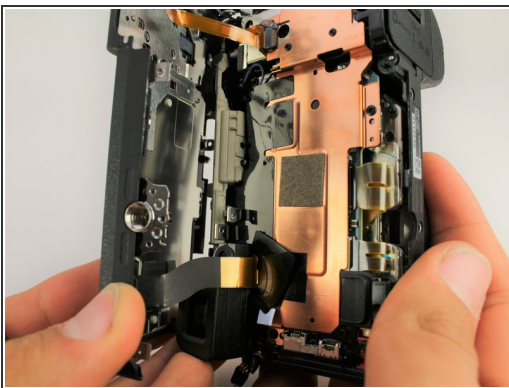
- Flip the battery lock switch to open and open the battery compartment.
- Remove three 2.5mm JIS 00 screws from the top of the battery compartment.
- ⓘ You may need a longer or thinner screwdriver to reach the screws in the battery compartment.

Step 12



- Use the plastic opening tool to begin prying off the back of the camera from the side.
- Continue to loosen the back until you can open it from the bottom.

Step 13



- Open the back of the camera.
- Use tweezers to remove two ribbon connectors from underneath the back. One connects to the LCD display and the other connects to the right side behind the battery compartment.

⚠ Ribbon connectors can tear easily. Grasp the plastic ends (not the ribbon) when removing.

Step 14



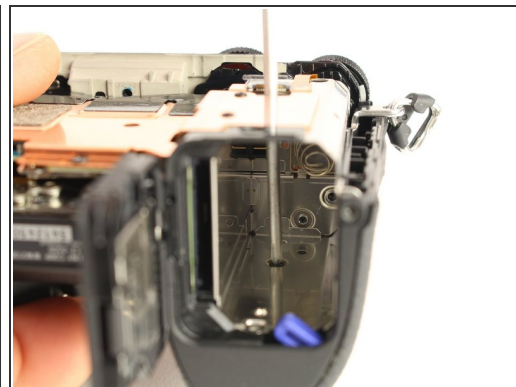
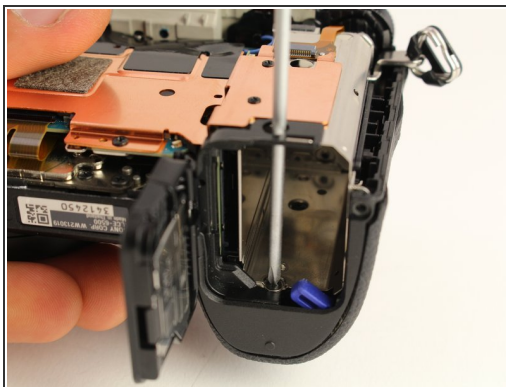
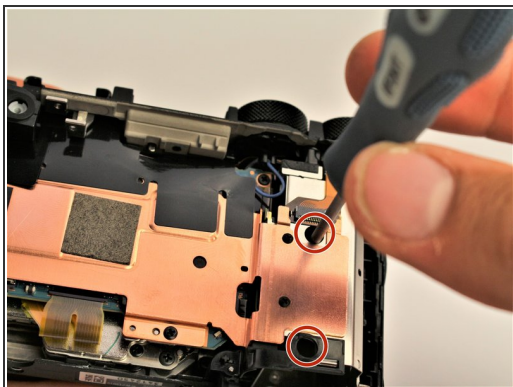
- Use the plastic opening tool to peel down the rubber grip around the handle at least 1 cm.
 - ❗ The adhesive holding the rubber grip down should be strong enough to reattach when you are done. If not, you may need an adhesive to reglue it.
- Remove one 3mm JIS 000 screw from underneath the rubber grip on the right side.
- Remove one 4mm JIS 000 screw from the left side.

Step 15



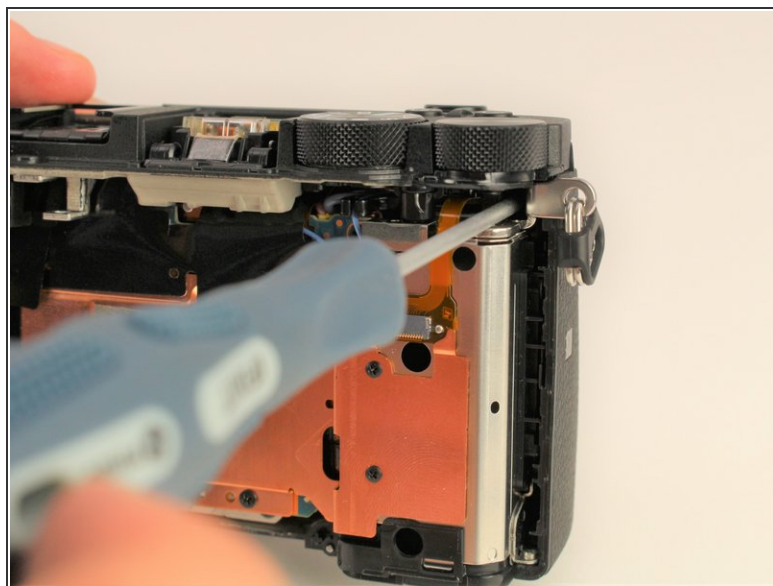
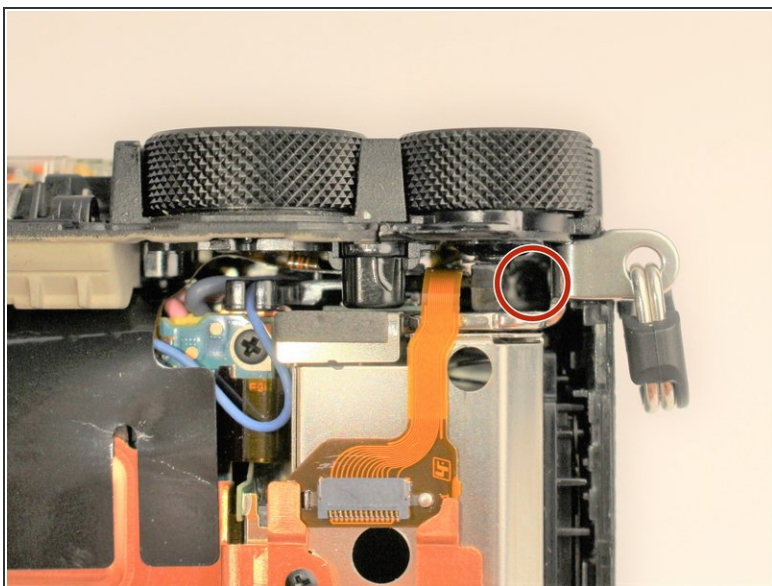
- ❗ The last screws holding the top on can be accessed once the back of the camera is removed.
- Remove one 2.5mm JIS 00 screw from the top next to the flash mount.

Step 16



- Insert a long, thin JIS 00 screwdriver through the two holes and into the battery compartment; remove the two 5mm JIS 00 screws inside it.

Step 17



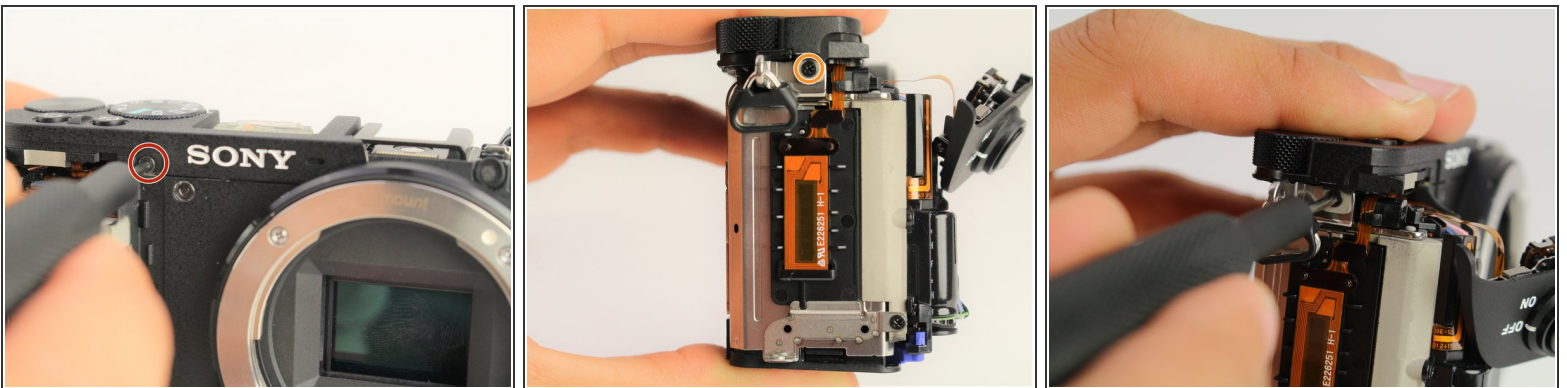
- Use the long, thin, screwdriver to remove one 5mm JIS 00 screw inside the camera accessible below the dials from the back.

Step 18



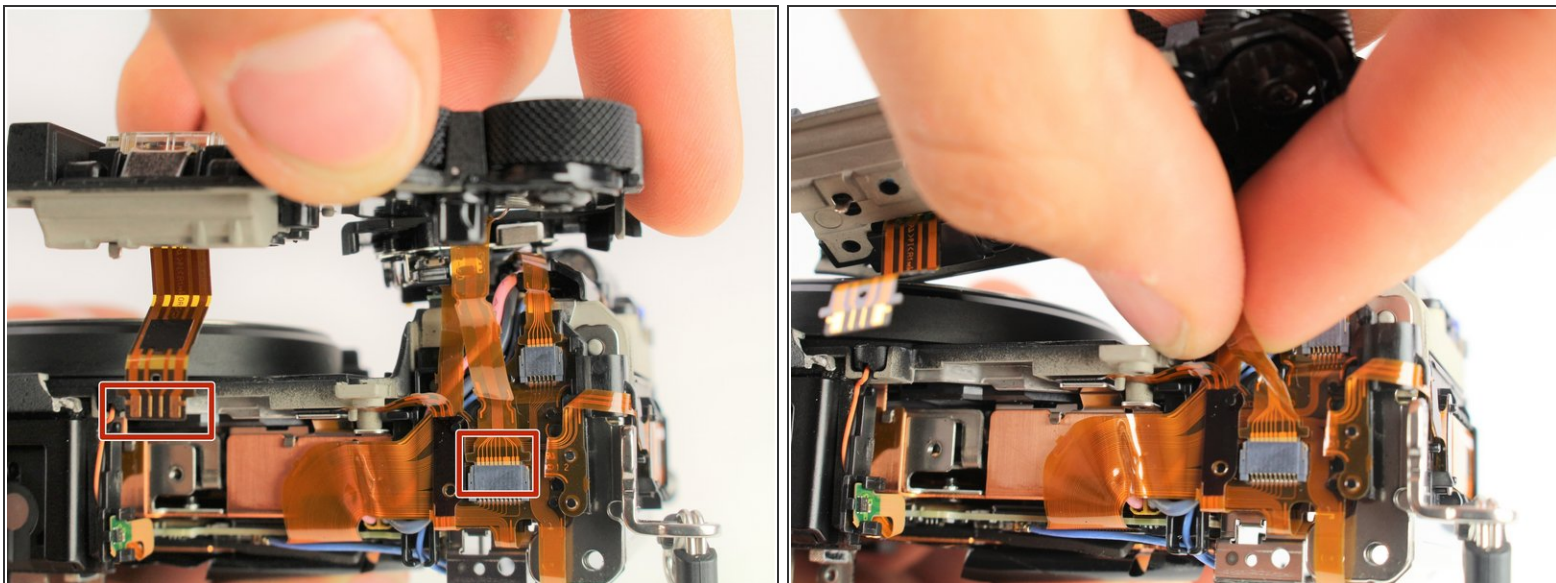
- Use the plastic opening tool to gently lift up the shutter button assembly.
 - Grasp the front grip from the top and bottom and pull it off. It should come off easily with the shutter button out of the way.
- i** The shutter button will still be attached by one ribbon cable once the front grip is removed.

Step 19



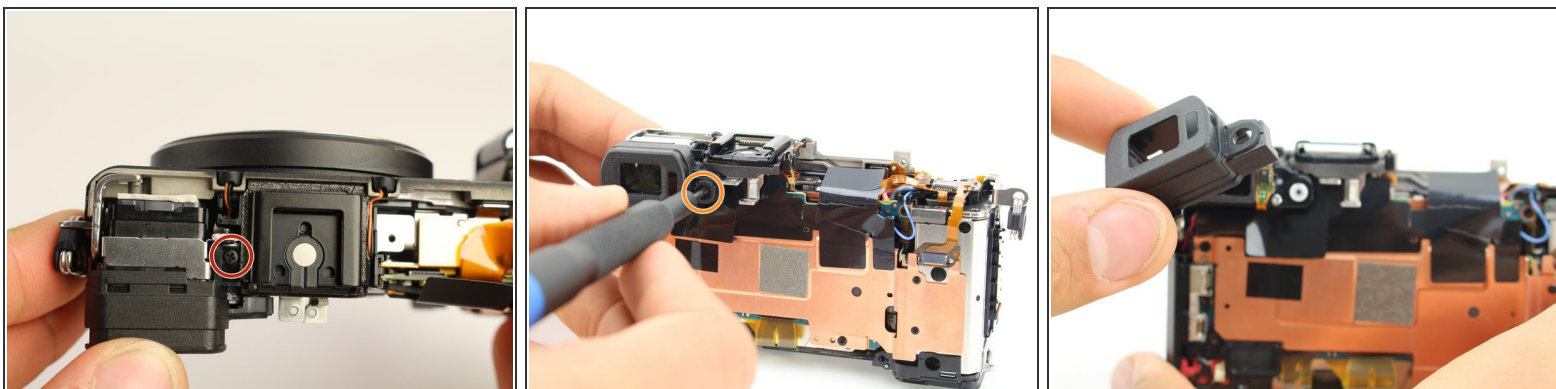
- Remove one 2.5mm JIS 00 screw from where the shutter button assembly used to be.
- Remove one 3mm JIS 00 screw from the side of the camera.

Step 20



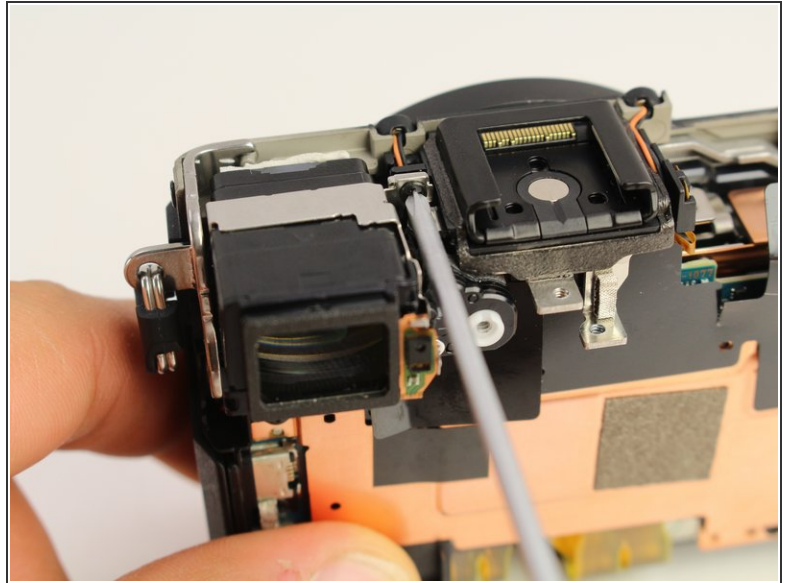
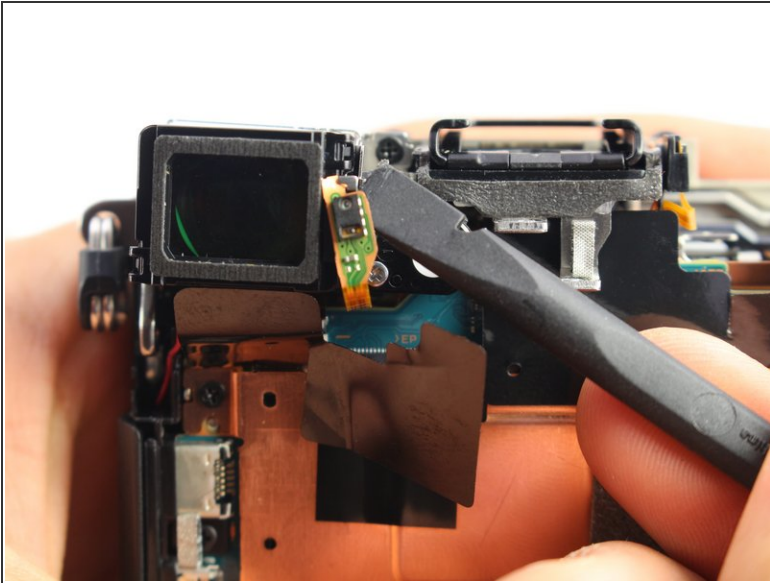
- Carefully unplug the two ribbon connectors attaching the top assembly to the rest of the camera.

Step 21 — Viewfinder Glass



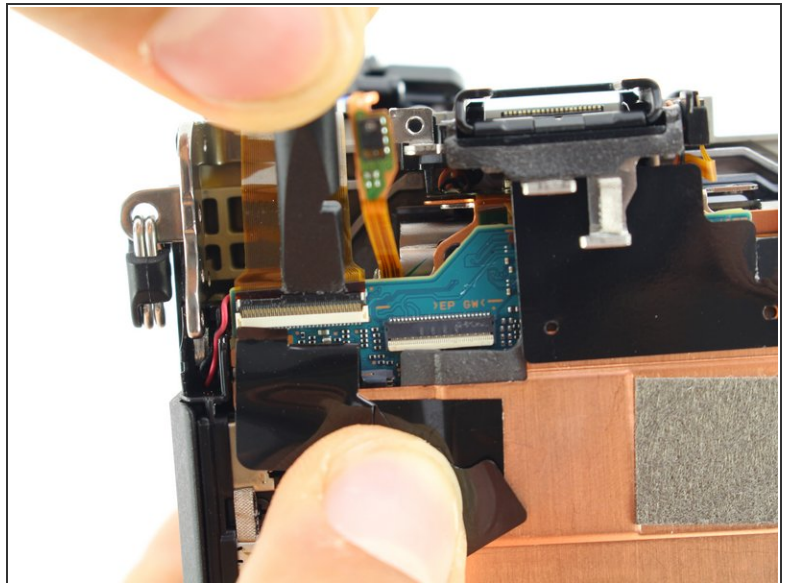
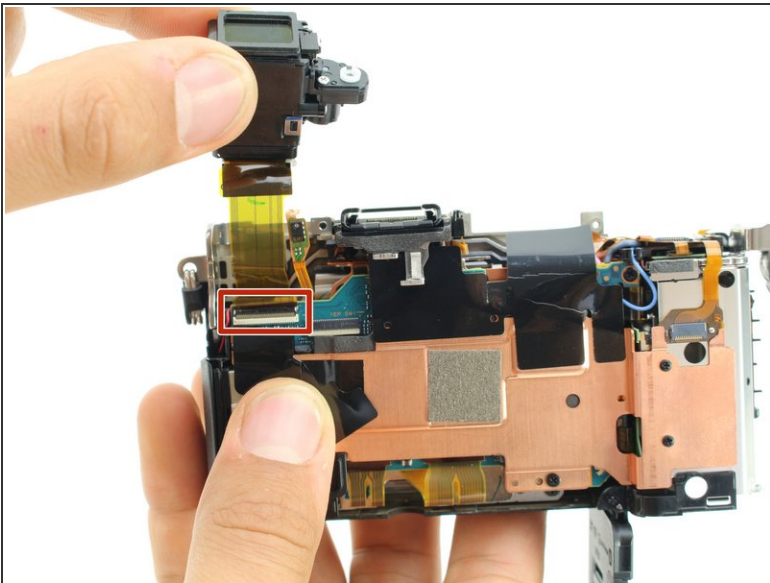
- From the top of the camera remove one 4mm JIS 00 screw.
- Remove one 5mm JIS 00 screw and the plastic bushing around it.
- Remove the viewfinder's protective cover.

Step 22



- Use the spudger to pry the light sensor off the side of the viewfinder.
 - ⓘ When prying off the sensor, bend it out from the bottom.
- Remove one 2.5mm JIS 000 screw on the side of the viewfinder to release it.

Step 23



- Lift the viewfinder out and flip up the tab to release the wire ribbon where it is connected to the motherboard.

To reassemble your device, follow these instructions in reverse order.