



# Sony AZ1VR LCD Side Display Replacement

This guide will tell you how to replace a damaged LCD display.

Written By: Michael Martin

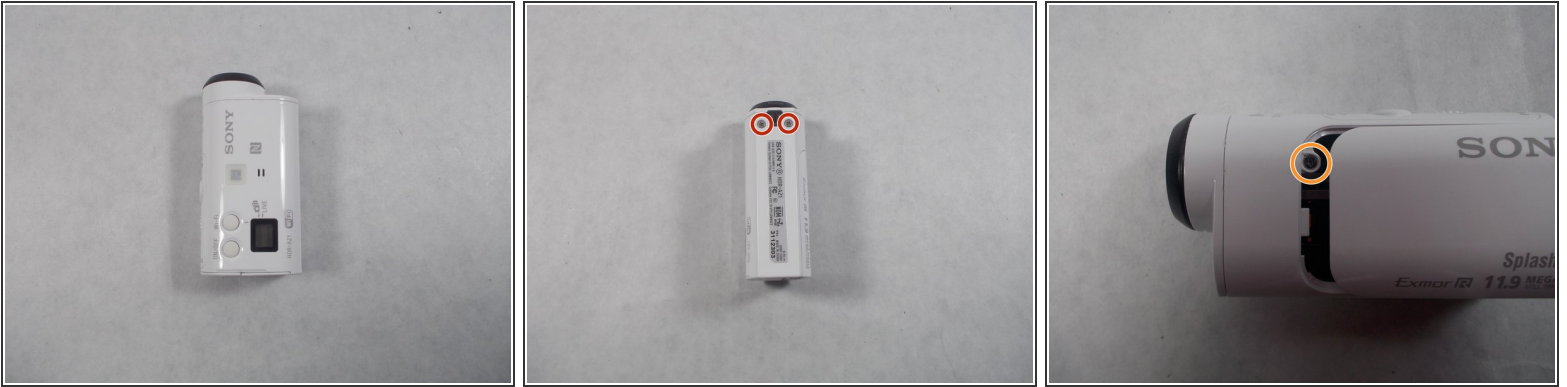




## TOOLS:

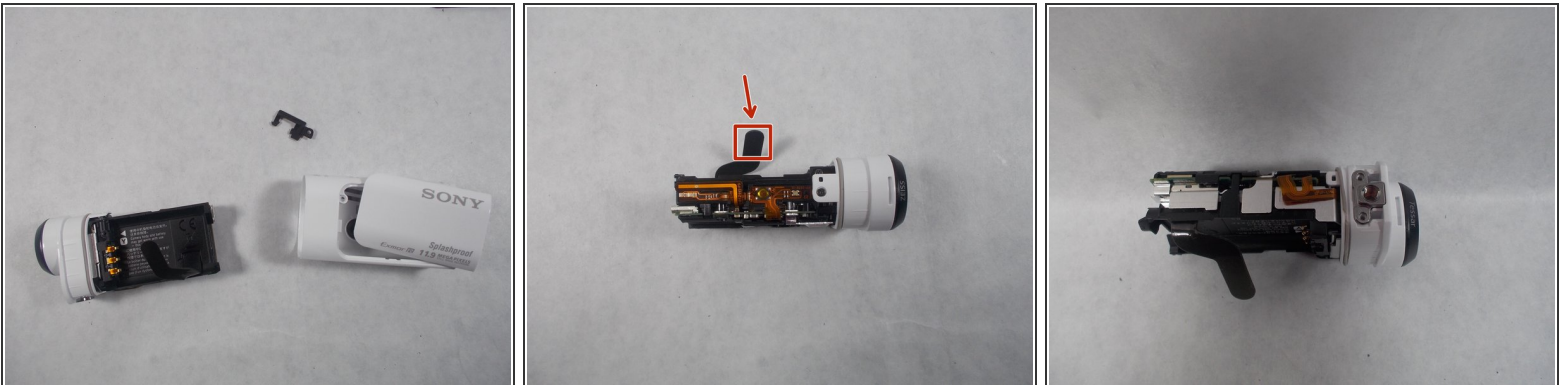
- [Mako Driver Kit - 64 Precision Bits](#) (1)
  - [Spudger](#) (1)
-

## Step 1 — LCD Side Display



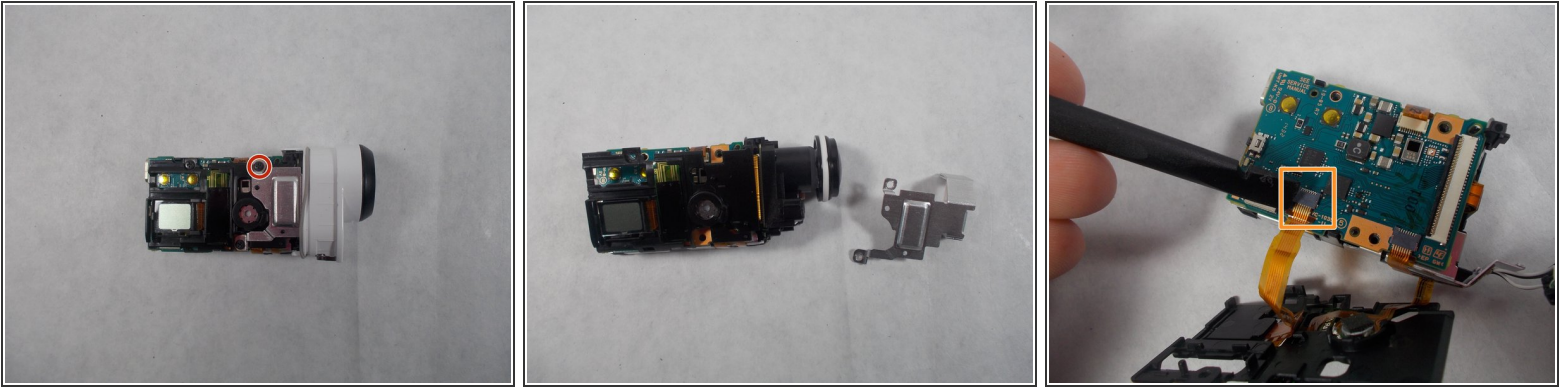
- Remove the two screws on the bottom of the camera.
- Remove the screw inside the battery door.
- Once these are removed, slide the door out, and the small piece of plastic with the door.

## Step 2



- Grab the lens and pull the body out of the plastic, this will reveal the insides of the device.
- You'll see a screw on the top of the device, towards the front, remove this screw.
- Pull the tabs on the bottom and top of the lens, and pull outward, this will remove the lens housing from the body.

## Step 3



- Remove the screws connected to the silver metal plate.
  - Remove the plate by pulling the back up and pushing it towards the front.
  - Remove the screw directly above the LCD display.
- ⚠ Pull the plastic up gently, it will be connected by cables on the bottom.
- Disconnect the cable going to the LCD display.

To reassemble your device, follow these instructions in reverse order.