



# Sony Alpha 5100 LCD Replacement

This guide will help you replace your Sony Alpha 5100 LCD.

Written By: Kevin Raggiani



---

## INTRODUCTION

This guide will be showing you how to get into the back of the LCD screen on the Sony Alpha 5100 (ILCE-5100/5100L). This guide will help if you are having trouble with the [camera screen not working](#). Since we are exposing the electronics underneath the screen, do not expose the inside to water.



### TOOLS:

- [iFixit Opening Tools](#) (1)
  - [Phillips #00 Screwdriver](#) (1)
-

## Step 1 — LCD



- Slide the power switch on the top of the camera to "off."

## Step 2



- Flip the LCD screen so that you have access to the back of the screen. The front of the screen should be facing the direction that the lens is facing.

## Step 3



- Remove the two 2mm Phillips #00 screws on the back of the screen.
- Remove the two 2mm Phillips #00 screws on the top of the LCD screen.

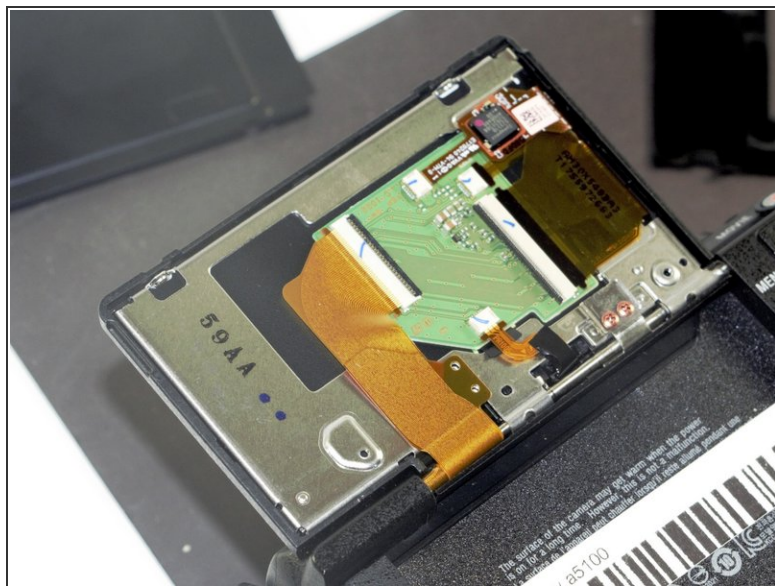
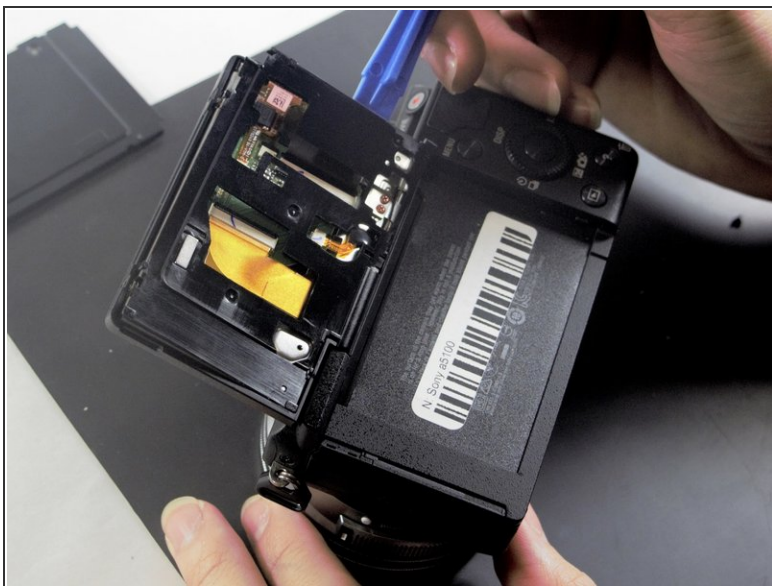


## Step 4



- Carefully pry open the back plate off the screen with an iFixit opening tool.
- ❗ If separating the plates is giving you trouble, aim for the notch at the bottom of the plate.

## Step 5



- Carefully open the back plate of the screen.

To reassemble your device, follow these instructions in reverse order.