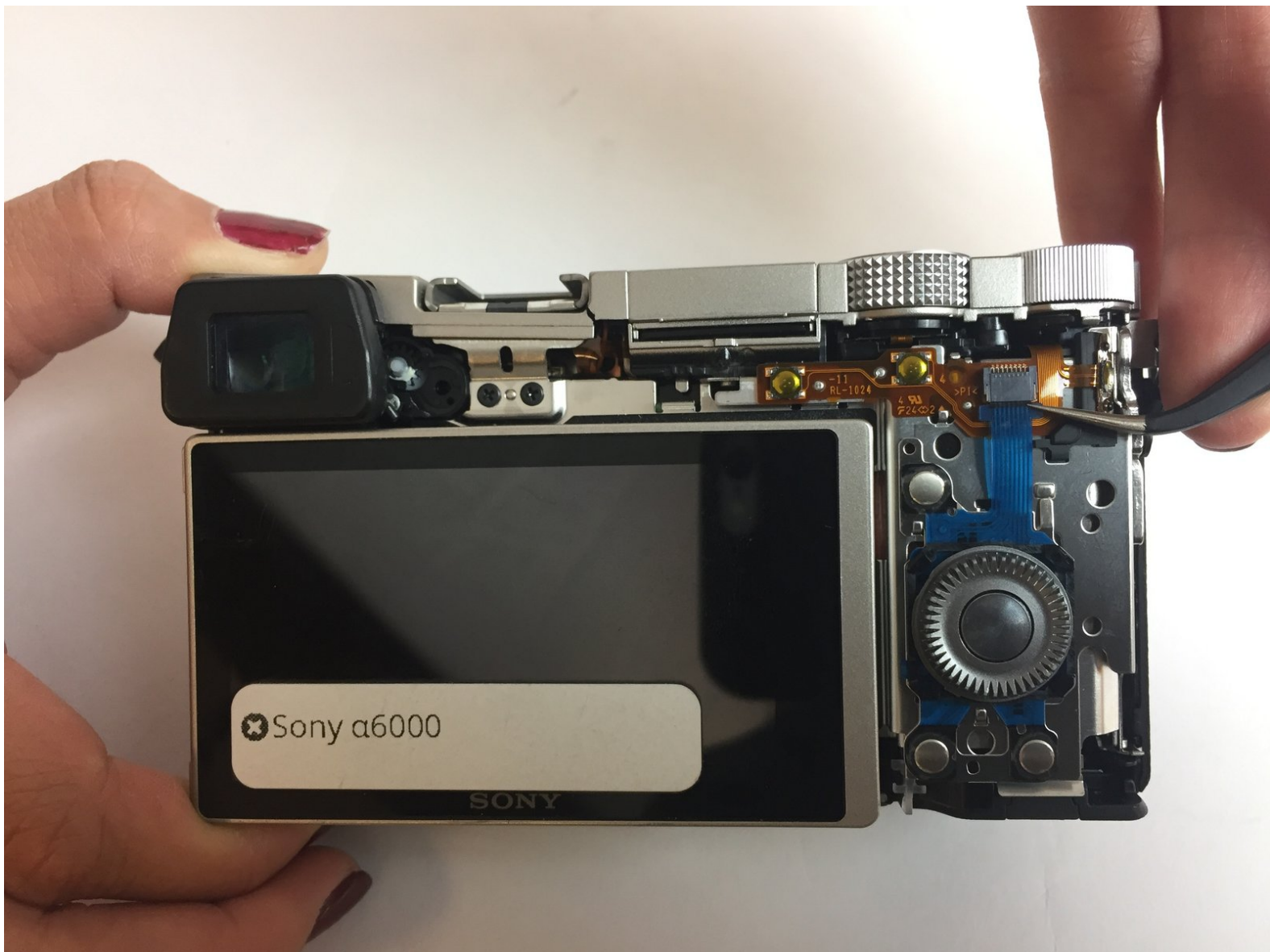




Sony Alpha 6000 Back Cover Replacement

Use this guide to replace or remove the back cover of the Sony Alpha 6000 camera.

Written By: Vic Rebernigg



INTRODUCTION

This guide is to replace the back cover of the Sony Alpha 6000 camera if it happened to be damaged or if any parts that are located below it need replacement.

TOOLS:

- [iFixit Opening Tools](#) (1)
 - [Tweezers](#) (1)
 - [Phillips #00 Screwdriver](#) (1)
-

Step 1 — Battery



- Make sure the camera is turned off by turning the switch to OFF.

Step 2



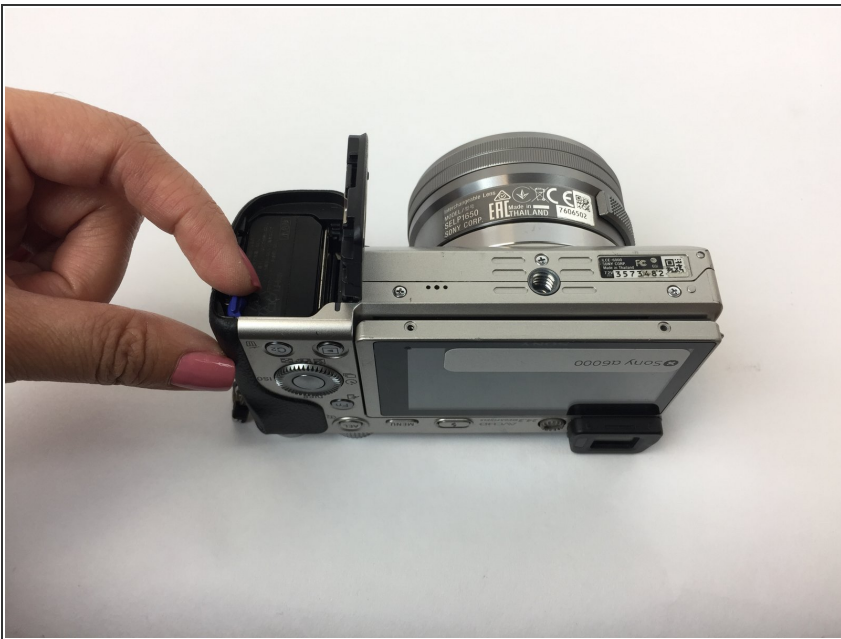
- Flip the camera around to access the battery compartment.
- Slide the battery compartment lock to the left to unlock it.

Step 3



- Locate the blue latch that holds the battery in.

Step 4



- Push the latch back to release battery.

Step 5



- The battery can now be taken out of its compartment.

Step 6 — Back Cover



- Turn the camera upside down and unscrew these two bottom 6 mm screws located on either side of the body by using the J00 head screw.

Step 7



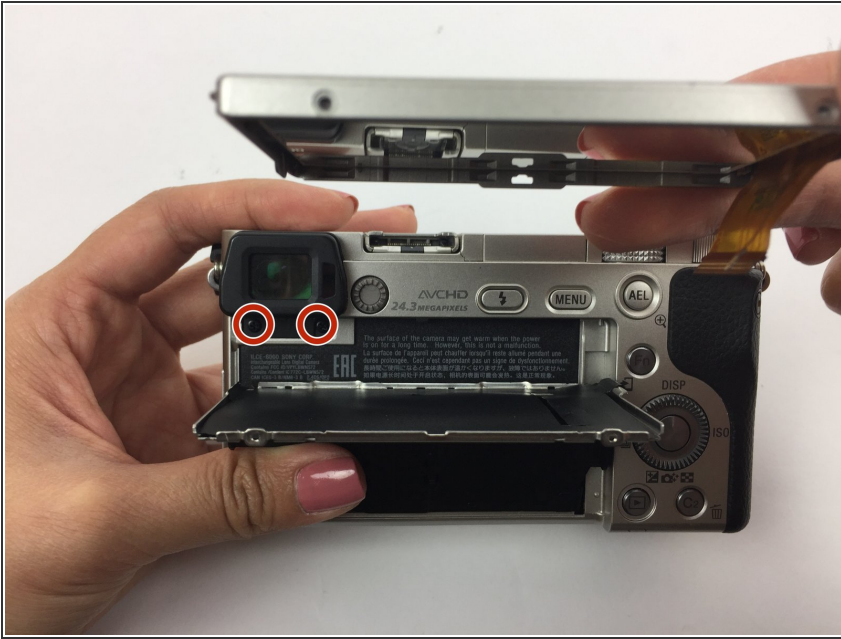
- Turn the camera sideways.
- Open the mini HDMI compartment and locate the two 6 mm screw underneath and another to the right of the compartment.
- Unscrew using the J00 head screw.

Step 8



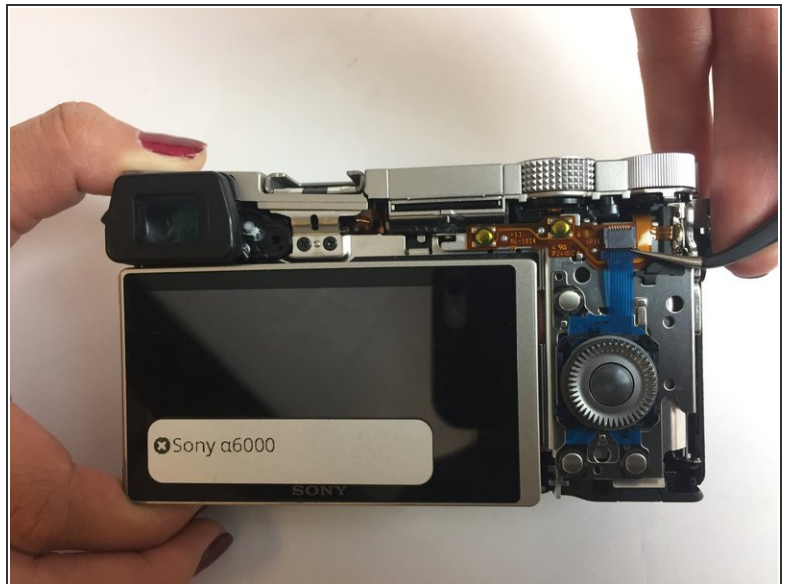
- Locate the two 4 mm screws within the battery compartment and unscrew them using the J00 screw head.

Step 9



- Bend the camera's screen forward to uncover two 3 mm screws below the eyepiece.
- Locate them and unscrew them.

Step 10



- Use a plastic opening tool around the body of the camera to wedge the back cover off. Start from the bottom next to the battery compartment.
- If necessary, lightly use your hand to pull the the back cover down to completely remove it.

To reassemble your device, follow these instructions in reverse order.