



# Sony Alpha 6000 Shutter Button Replacement

This guide will show you how to replace the shutter button on your Sony Alpha 6000.

Written By: Fernando Sierra



---

## INTRODUCTION

If there are problems with the camera recognizing the press of the shutter button, this guide will show you step-by-step instructions on how to remove the button in order to replace it.

---



### TOOLS:

- [Heavy-Duty Spudger](#) (1)
  - [Tweezers](#) (1)
  - [Phillips #0 Screwdriver](#) (1)
  - [Phillips #00 Screwdriver](#) (1)
-

## Step 1 — Battery



- Make sure the camera is turned off by turning the switch to OFF.

## Step 2



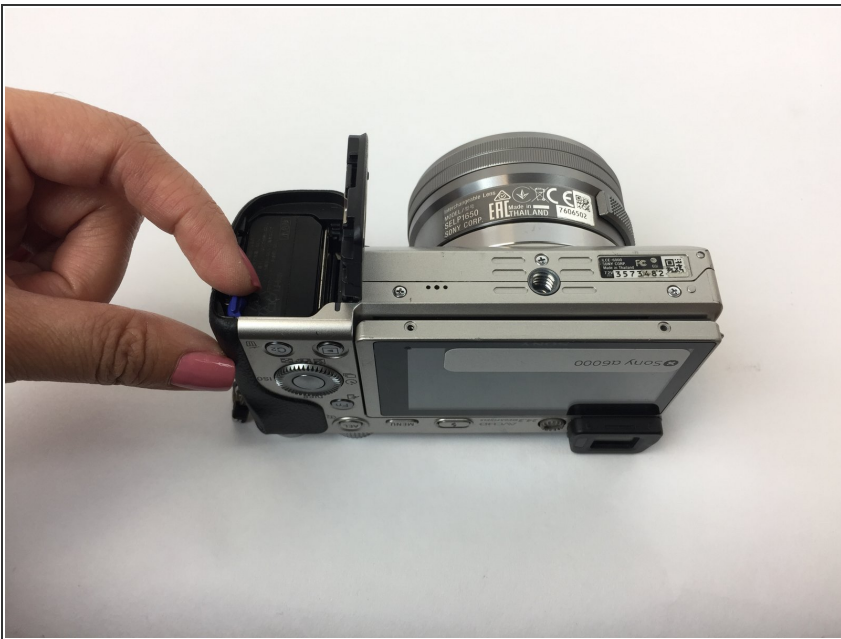
- Flip the camera around to access the battery compartment.
- Slide the battery compartment lock to the left to unlock it.

### Step 3



- Locate the blue latch that holds the battery in.

### Step 4



- Push the latch back to release battery.



## Step 5



- The battery can now be taken out of its compartment.

## Step 6 — Back Cover



- Turn the camera upside down and unscrew these two bottom 6 mm screws located on either side of the body by using the J00 head screw.

## Step 7



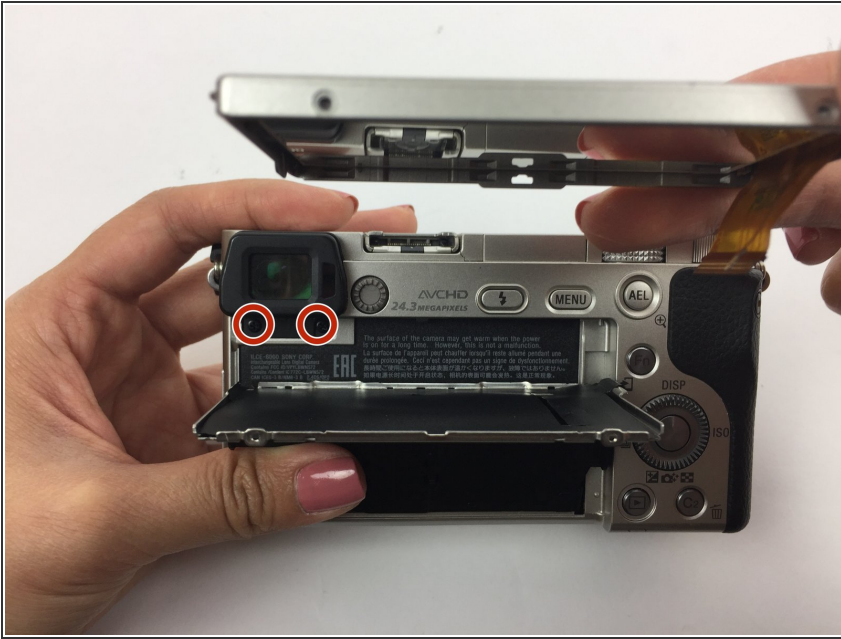
- Turn the camera sideways.
- Open the mini HDMI compartment and locate the two 6 mm screw underneath and another to the right of the compartment.
- Unscrew using the J00 head screw.

## Step 8



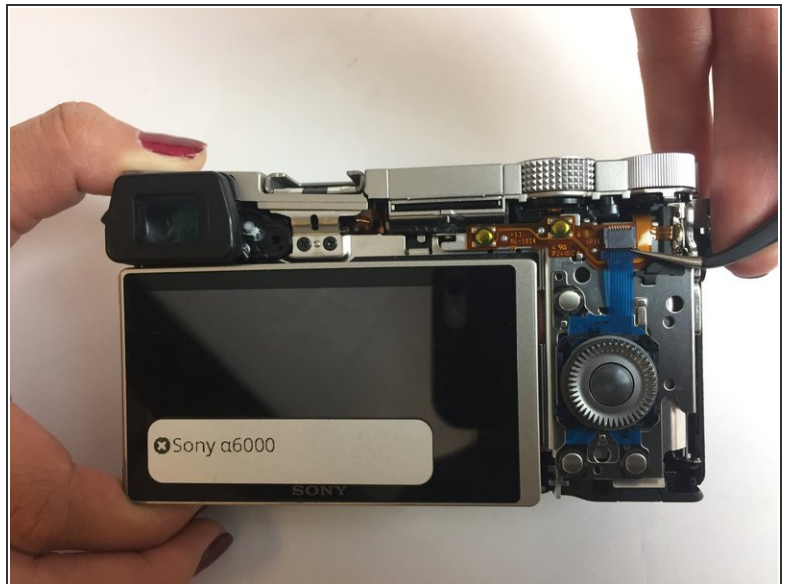
- Locate the two 4 mm screws within the battery compartment and unscrew them using the J00 screw head.

## Step 9



- Bend the camera's screen forward to uncover two 3 mm screws below the eyepiece.
- Locate them and unscrew them.

## Step 10



- Use a plastic opening tool around the body of the camera to wedge the back cover off. Start from the bottom next to the battery compartment.
- If necessary, lightly use your hand to pull the the back cover down to completely remove it.

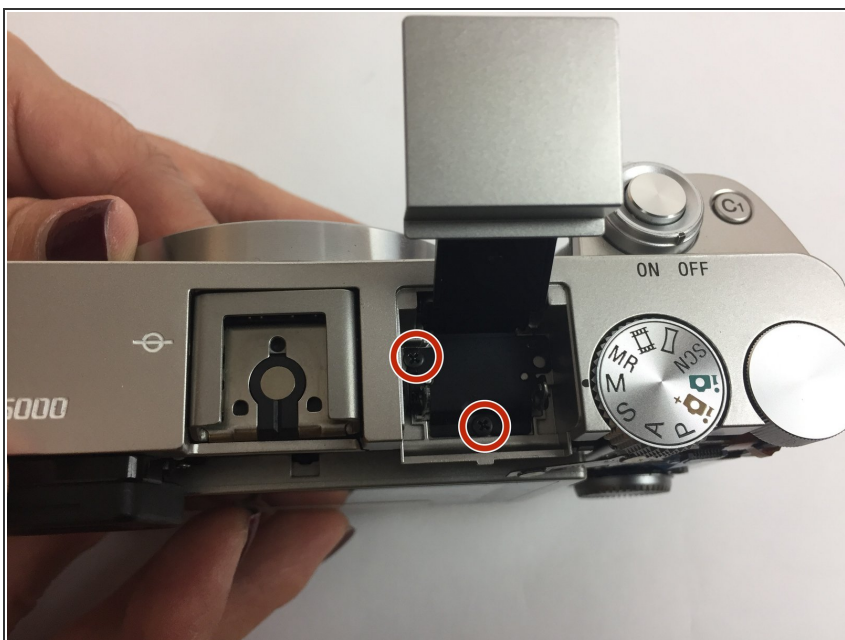


## Step 11 — Shutter Button



- Once the back cover is off, locate the flash of the camera and push it forward to open it

## Step 12



- Locate the two 3 mm screws within the flash and unscrew them

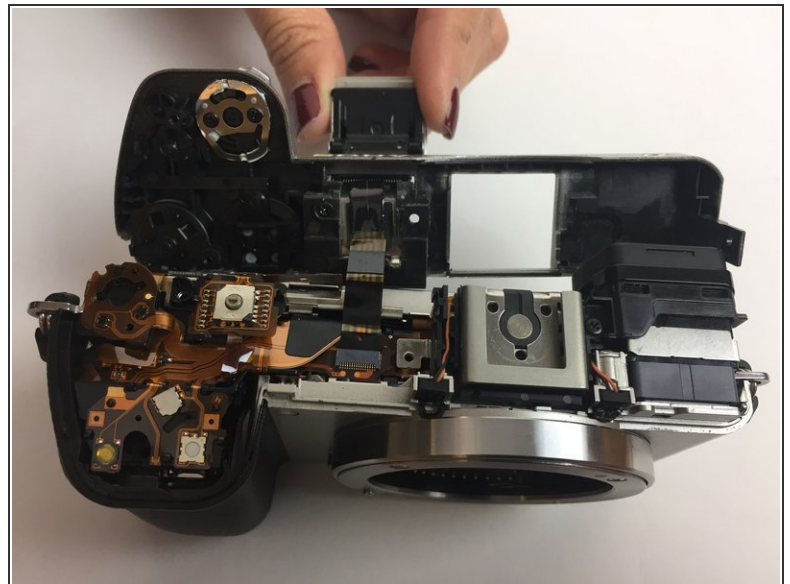
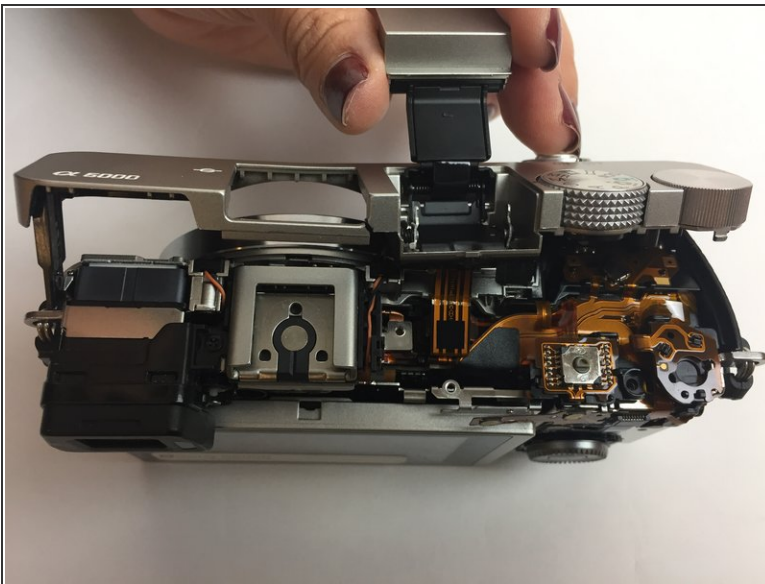


## Step 13



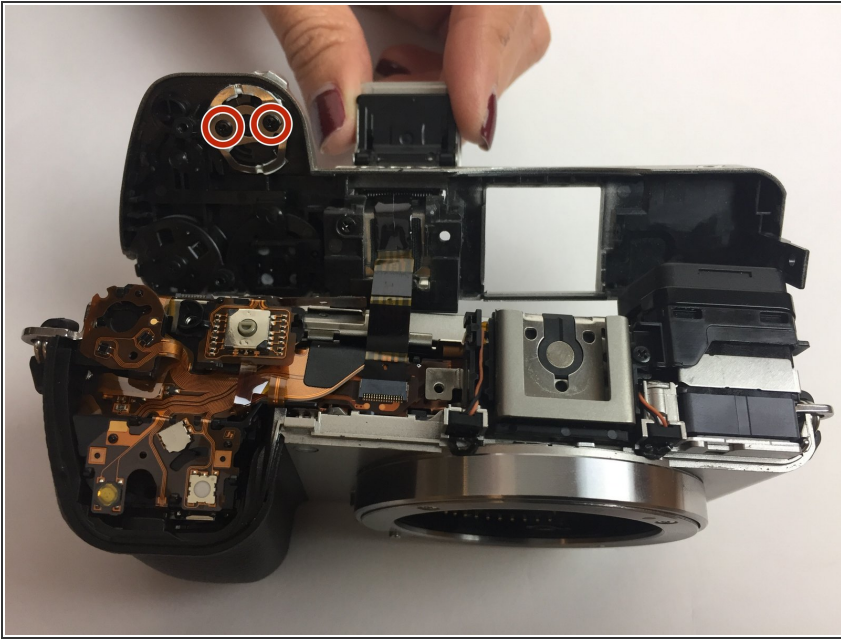
- Hold the camera from the bottom and using a spudger, go around the top of the camera and separate the top plastic piece from the main body.

## Step 14



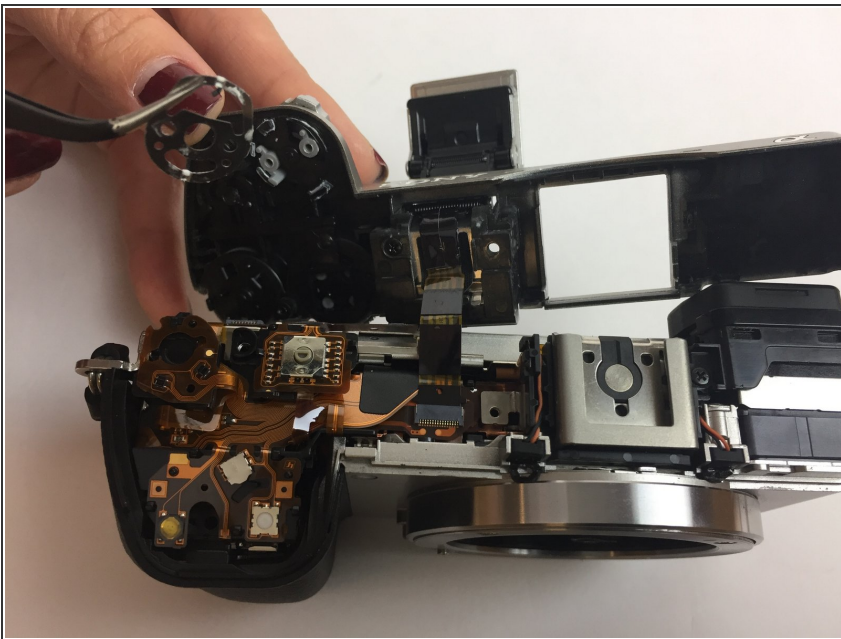
- Hold the top of the camera away from the body.
- Carefully turn it over to uncover the bottom of the shutter button.

## Step 15



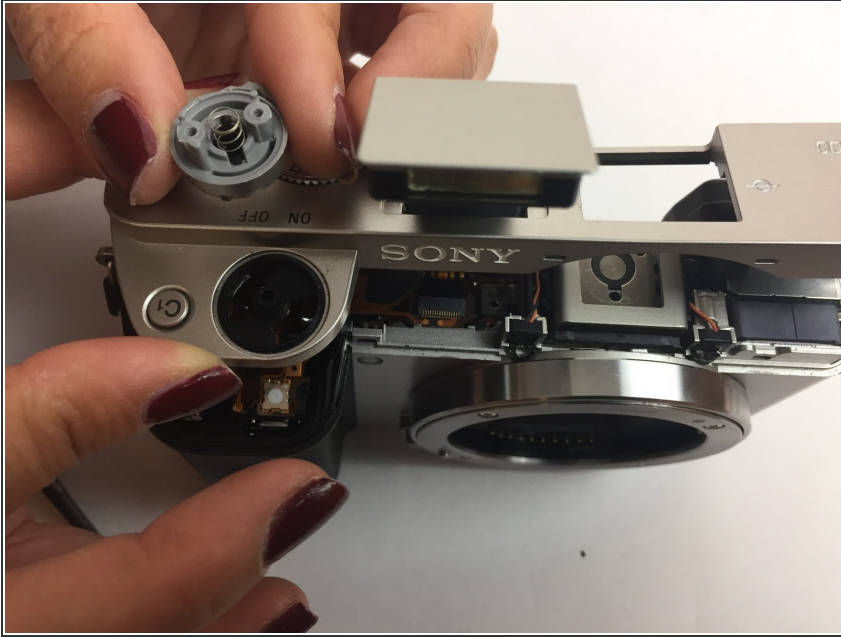
- Locate the two screws holding the shutter button and unscrew them.

## Step 16



- Once the screws are out, use a pair of tweezers to pull out the circular metal piece under the shutter button.

## Step 17



- Turn the top plastic piece back over.
- Now you will be able to completely remove the camera's shutter button.

Now that the shutter button is removed, you will be able to replace it with a new piece. To reassemble your device, follow these instructions in reverse order.