



Sony Alpha A350 : LCD Replacement

If your display screen remains black or is streaked with color after turning your device on, replacing your screen may be the best solution.

Written By: Sydney Duncan



INTRODUCTION

In the event that your display screen does not work, you may need to replace it. This guide will show you how to remove the defective screen and replace it with a new one.

TOOLS:

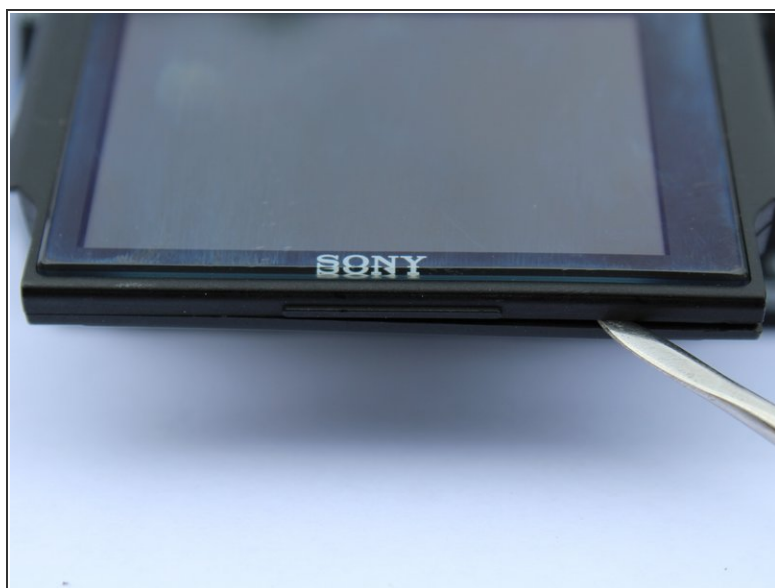
- [Phillips #000 Screwdriver](#) (1)
 - [Heavy-Duty Spudger](#) (1)
-

Step 1 — LCD



- Lift up the screen.
- Unscrew the two Phillips #000 screws on each side of the screen.

Step 2



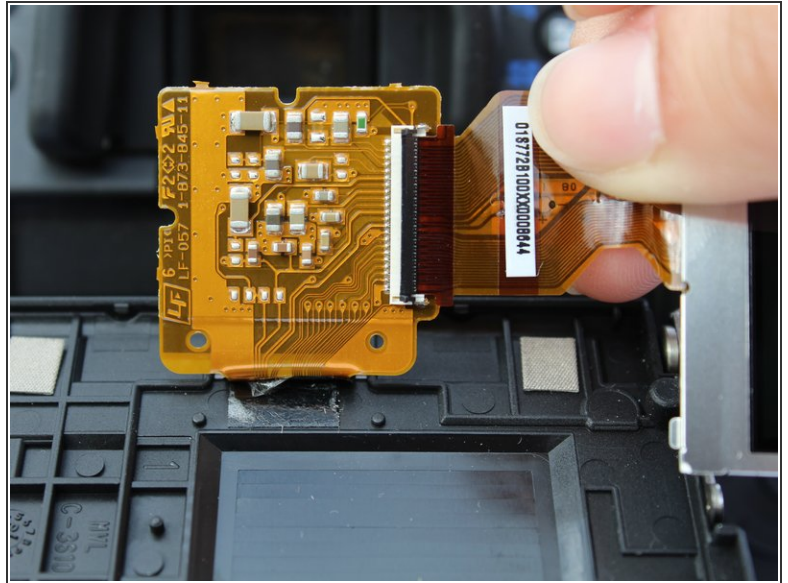
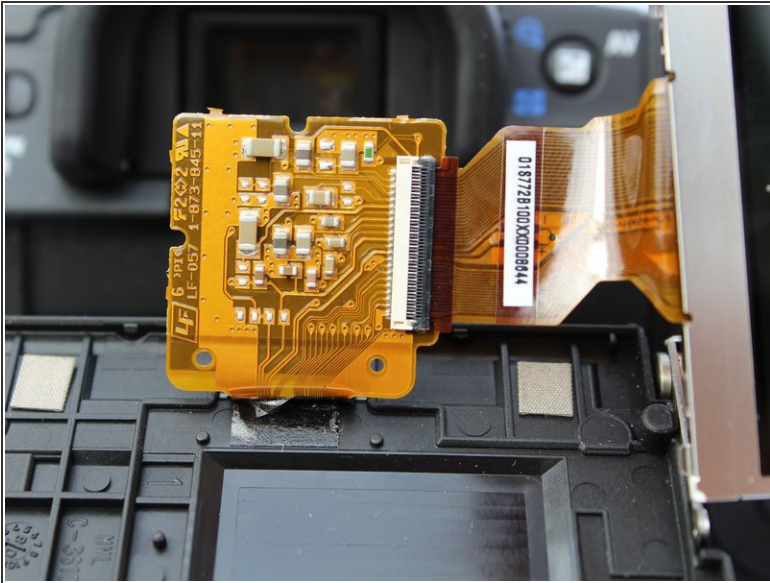
- Use a plastic spudger to gently pry open the screen.
- Continue to push and slide along the edge of the screen.

Step 3



- Lift up the glass screen protector from the LCD.
- Lift the LCD to expose the ZIF connector.

Step 4



- Identify the ZIF (zero insertion force) connector (the black bar).
- ⚠ Flip the lever up and pull the connector out (Be sure not to yank the connector out to avoid damage).
- Connect the new LCD and then flip the lever down.

To reassemble your device, follow these instructions in reverse order.