



Sony Alpha A350 Power Switch Replacement

If your power switch will not turn on or off it may need to be replaced.

Written By: Sydney Duncan



INTRODUCTION

If your power switch is damaged the best option may be to replace it.



TOOLS:

- [Heavy-Duty Spudger](#) (1)
 - [Phillips #000 Screwdriver](#) (1)
-

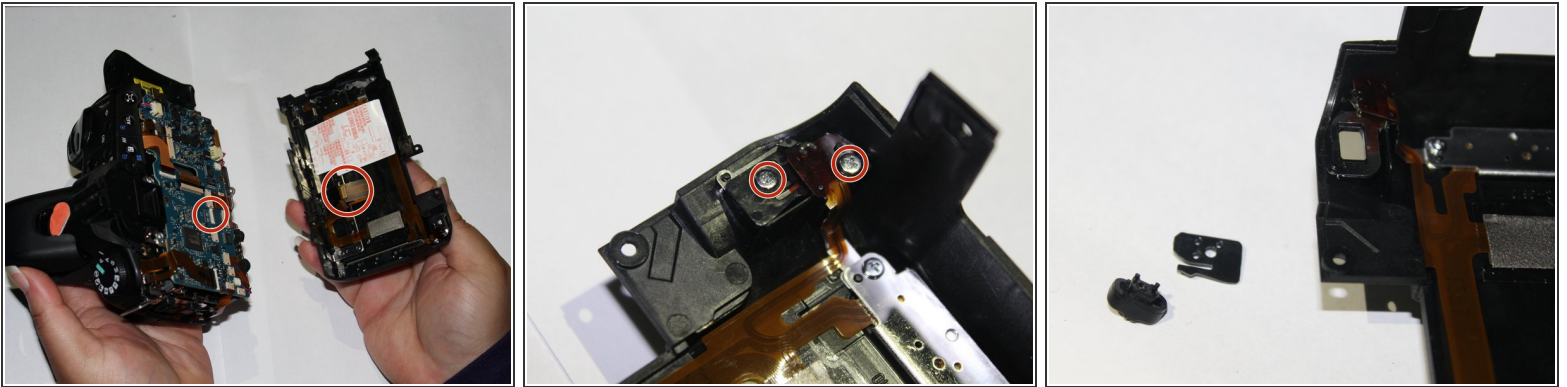
Step 1 — Power Switch



- Identify and unscrew the ten PH000 screws around the top, front, left, and right sides of the camera body.

⚠ Screws are very small, can be difficult to remove, and easy to lose.

Step 2



- Slowly separate the back case from the camera.

⚠ There may be a ribbon cable connecting the two pieces. Unlock the connector and remove the ribbon cable if necessary.

- Identify and unscrew the two PH000 screws connecting the power switch.
- Remove the power switch.

To reassemble your device, follow these instructions in reverse order.

