



Sony Alpha A350 Rear Case Replacement

Follow this guide if you want to replace the rear case of your Sony Alpha A350.

Written By: Danielle Trivett



INTRODUCTION

This guide will go through step by step on the removal of the rear case of a Sony Alpha A350. These steps will include removal of all screws, the eye cup, and front case of the camera in order to safely pull the rear case off of the main device. The function of this part is to protect all wire and parts such as the motherboard inside of the device. The rear case will need replaced if there is a crack or hole in the case, which exposes the inside of the device. Replacing the rear case will insure no further damage comes to the camera.

TOOLS:

- [Heavy-Duty Spudger](#) (1)
 - [Phillips #000 Screwdriver](#) (1)
 - [Phillips #00 Screwdriver](#) (1)
-

Step 1 — Front Case



- Using a Phillips #00 Remove five screws from the bottom of the camera.
- Four 4.3mm screw.
- One 5.5mm screw.

Step 2



- Using a Phillips #00, remove the single 3.6mm Phillips screw on the left side of the camera.
- Open the remote / DC under the rubber flap to reveal one screw.
- Using the Phillips #00 remove the single 4.3mm screw.

Step 3



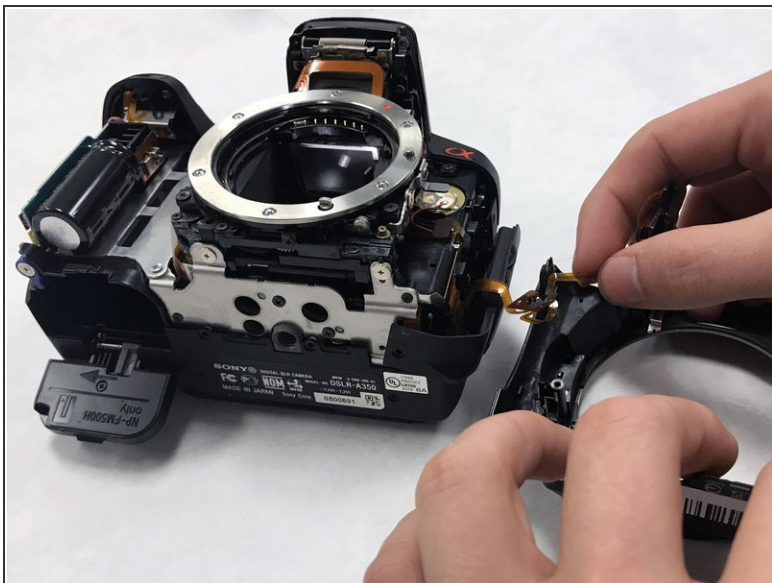
- Open the flash on the top of the camera and remove two 4.3mm screws with a Phillips #00 screwdriver.
- ☞ If the spring guard falls out during deconstruction, gently place the guard over the spring during construction.
- ⚠ To open the flash, simply press the button on the left side.

Step 4



- Open the plastic SD card door.
- Using Phillips #00 screwdriver, remove two 4.4 mm screws outside and two 4.4mm screws inside the door.

Step 5



- Gently pull the outer front case from the camera.
- ❗ It should fall apart easily if all screws are removed.

Step 6 — Eye Cup



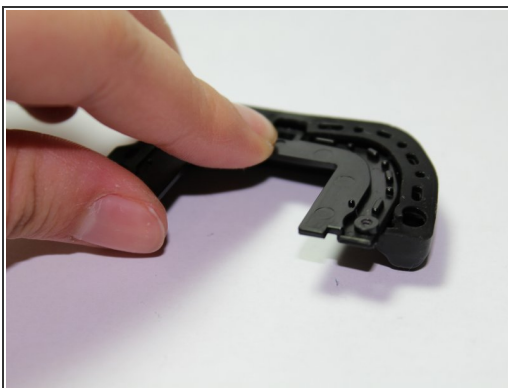
- Identify the bottom of the eye cup
- Using the heavy duty spudger, push the eye cup upward to remove it from the camera body.

Step 7



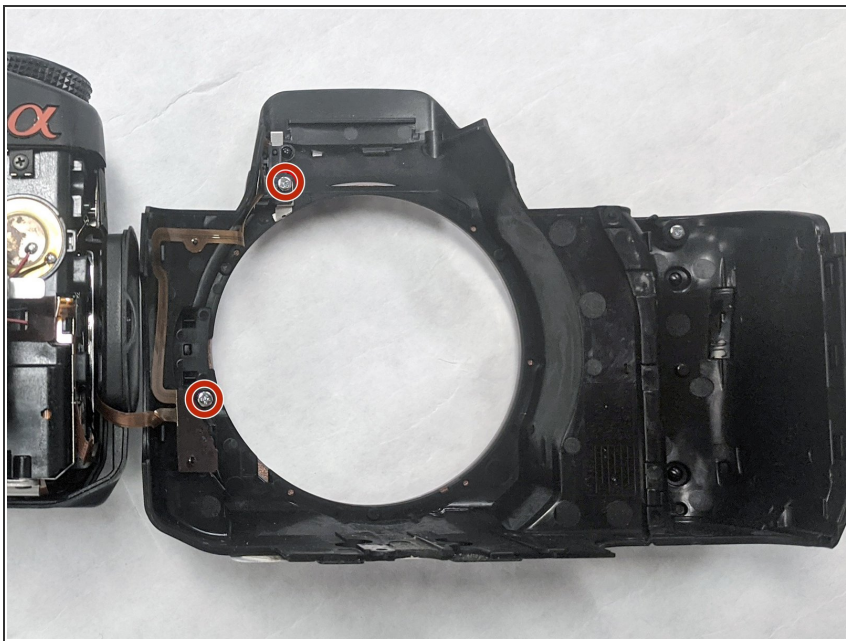
- Flipping to the back side of the eye cup, unscrew the two JIS 000 screw from each side.
- Remove the back side of the eye cup.

Step 8



- Push down on the hard plastic part of the eye cup and remove it from the cushion.

Step 9 — Rear Case



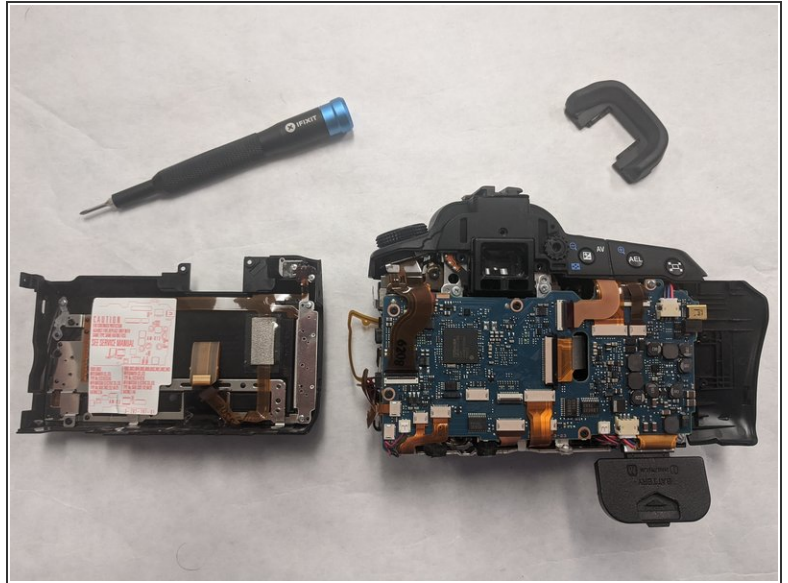
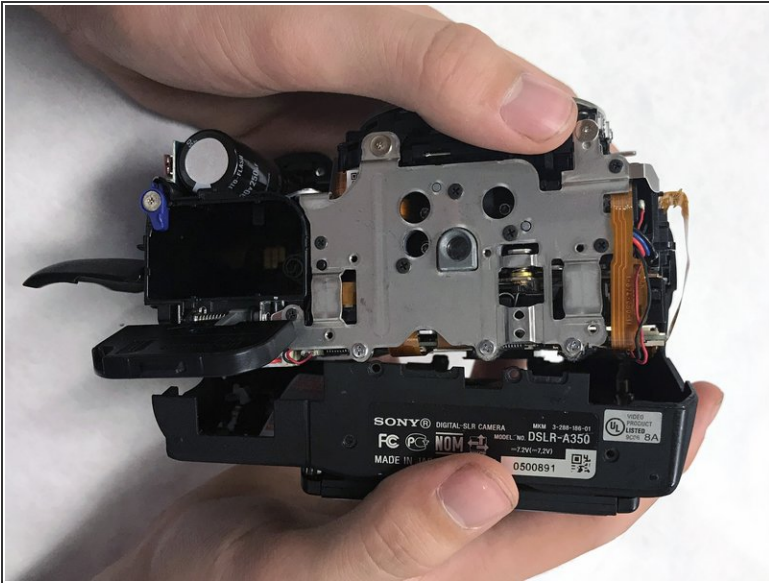
- Using a Phillips #00 screwdriver, remove the two 4.3mm screws attaching the ribbons to the front case.

Step 10



- After taking off the eye cup, remove two screws using a Phillips screwdriver.

Step 11



- Gently pry the rear case off of the body of the camera.

⚠ If it does not come off easily, use a Heavy Duty Supdger to help pry it open.

To reassemble your device, follow these instructions in reverse order.