



Sony Alpha ILCE-6000 Lens Contact mount Replacement

If your lens is not focusing correctly or the lens is not communicating with the camera, this guide will help replace the mount contacts.

Written By: Tony Au



INTRODUCTION

If your lens is not focusing correctly or the lens is not communicating with the camera, this guide will help replace the mount contacts.



TOOLS:

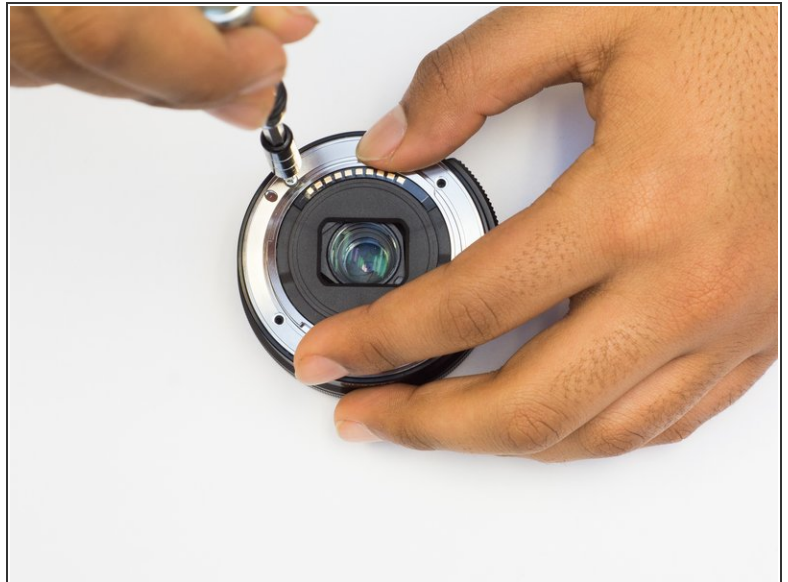
- [Phillips #00 Screwdriver](#) (1)
 - [Tweezers](#) (1)
-

Step 1 — Lens Contact mount



- Use the finger, press and hold the release black circle button (on the bottom) next to the lens on the front of the camera. Twist the lens counterclockwise and pull it off.

Step 2



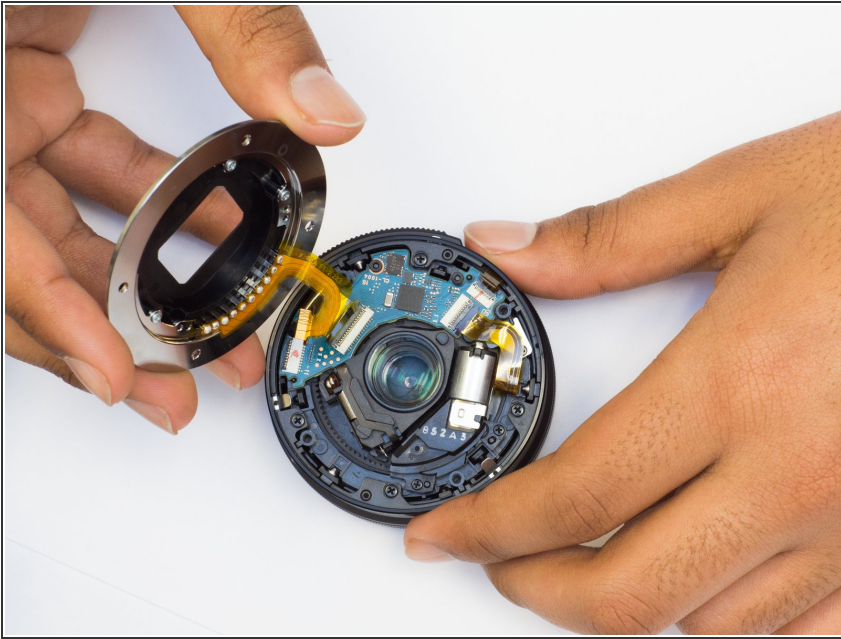
- Locate and remove the four 5mm screws at the four corners.

Step 3




- Use two fingers to gently remove surface metal pieces out of frame. Be aware of the ribbon cable connecting the mount to the board below.

Step 4



- Carefully pull out the ribbon cable from the connector on the lens board. Then follow these instructions in reverse order to reassemble the lens.

 The ribbon cable can easily be damaged or punctured by a sharp pair of tweezers. Be gentle.

To reassemble your device, follow these instructions in reverse order.