



# Sony Alpha ILCE-6000 Screen Replacement

If your screen is cracked, smashed or stopped working, this guide will help you replace the screen for the Sony Alpha ILCE-6000

Written By: Tony Au



## INTRODUCTION

If your screen is cracked, smashed or stopped working, this guide will help you replace the screen for the Sony Alpha ILCE-6000

---

### TOOLS:

- [Phillips #00 Screwdriver](#) (1)
  - [Phillips 0000 Screwdriver](#) (1)
  - [iFixit Opening Tools](#) (1)
  - [Tweezers](#) (1)
-

## Step 1 — Battery Replacement



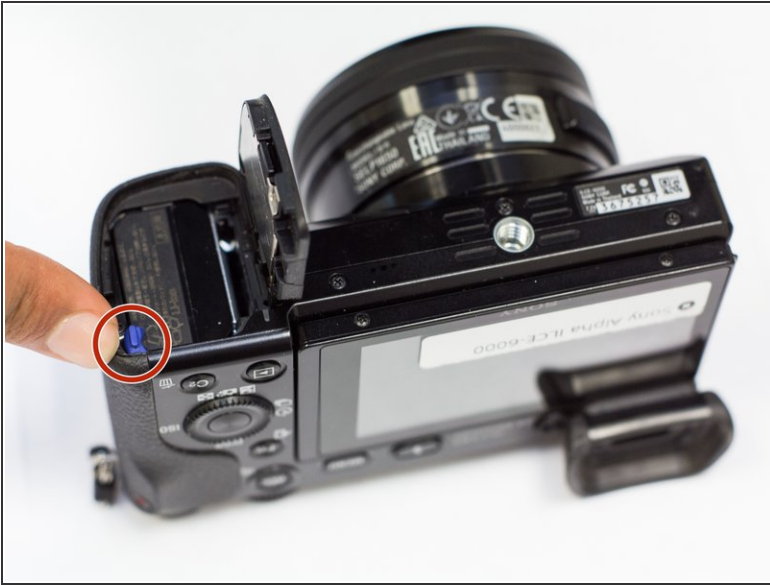
- Turn off the camera by sliding the power switch to OFF.

## Step 2



- Flip the camera upside down and locate the battery compartment.
- Slide the compartment lock to OPEN to unlock it.

### Step 3



- Locate the blue lever that keeps the battery in place.
- Push the blue lever back to release battery.

### Step 4



- Once the battery is free, you are able to take the battery out of the compartment.



## Step 5 — Screen



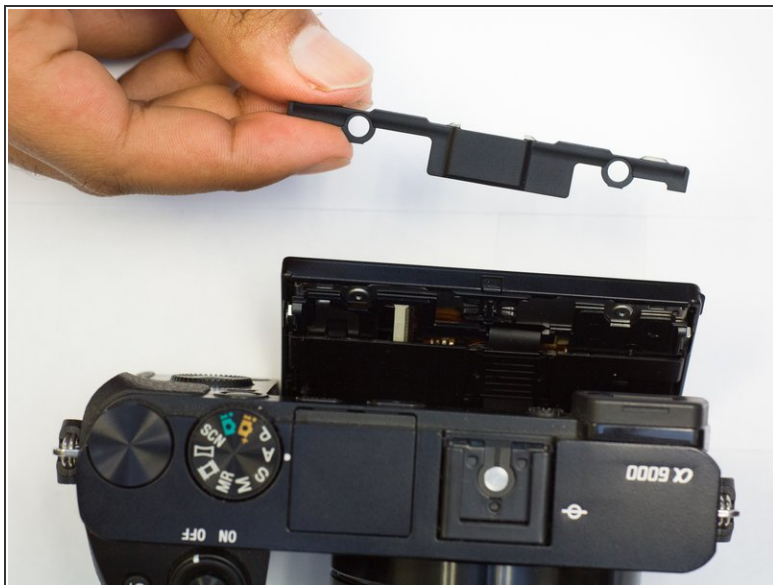
- Flip the camera to the bottom side. Using screwdriver, remove the two screws located on the bottom of camera screen.
- Flip the camera back over, locate the two other 3mm screws behind the screen and remove them.

## Step 6



- Gently pry open the screen backplate.

## Step 7



- Gently pry off the plastic cover at the top of the screen.

## Step 8



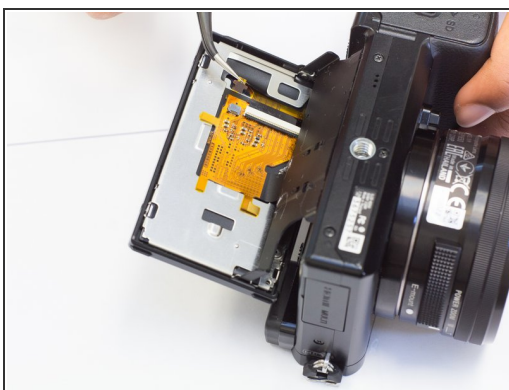
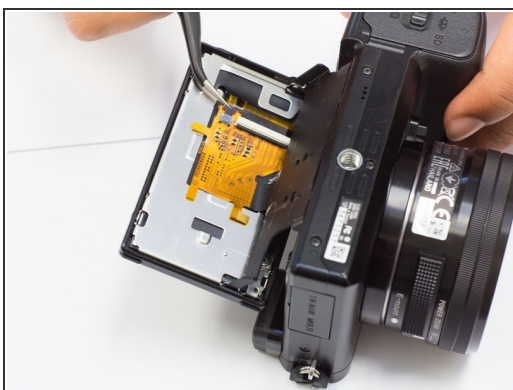
- Carefully remove the clip located at the top of the screen.

## Step 9



- Flip the camera so that it is bottom side up. Pry off the inner support plate.

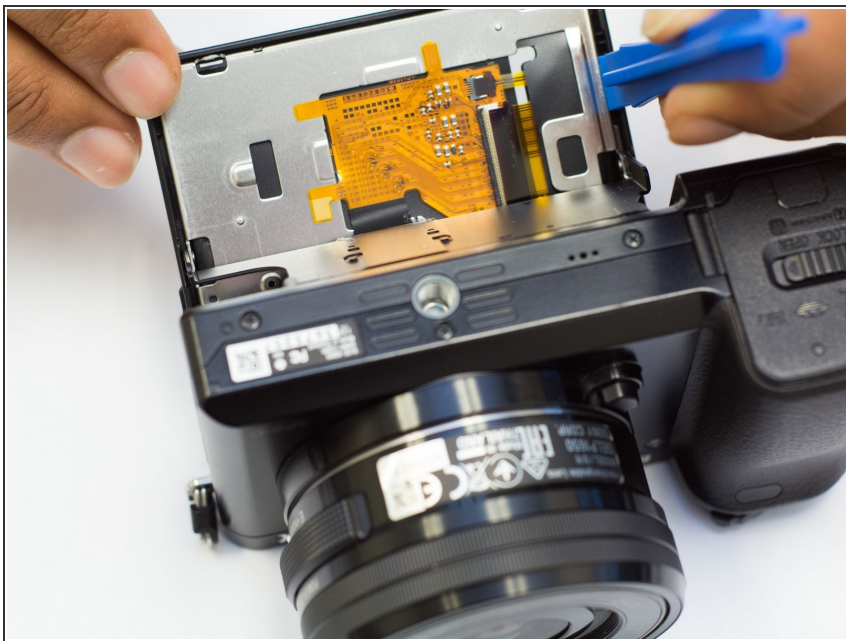
## Step 10



- Gently wiggle the screen's ribbon cable until it comes free from the white slot.

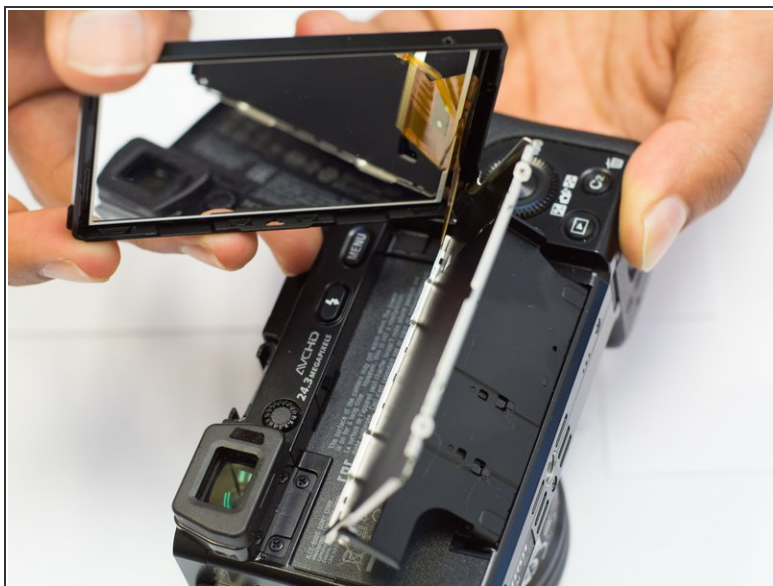


## Step 11



- Pry apart the metal backplate and remove it.

## Step 12



- Gently remove the old screen, and replace it with the new one.

To reassemble your device, follow these instructions in reverse order.