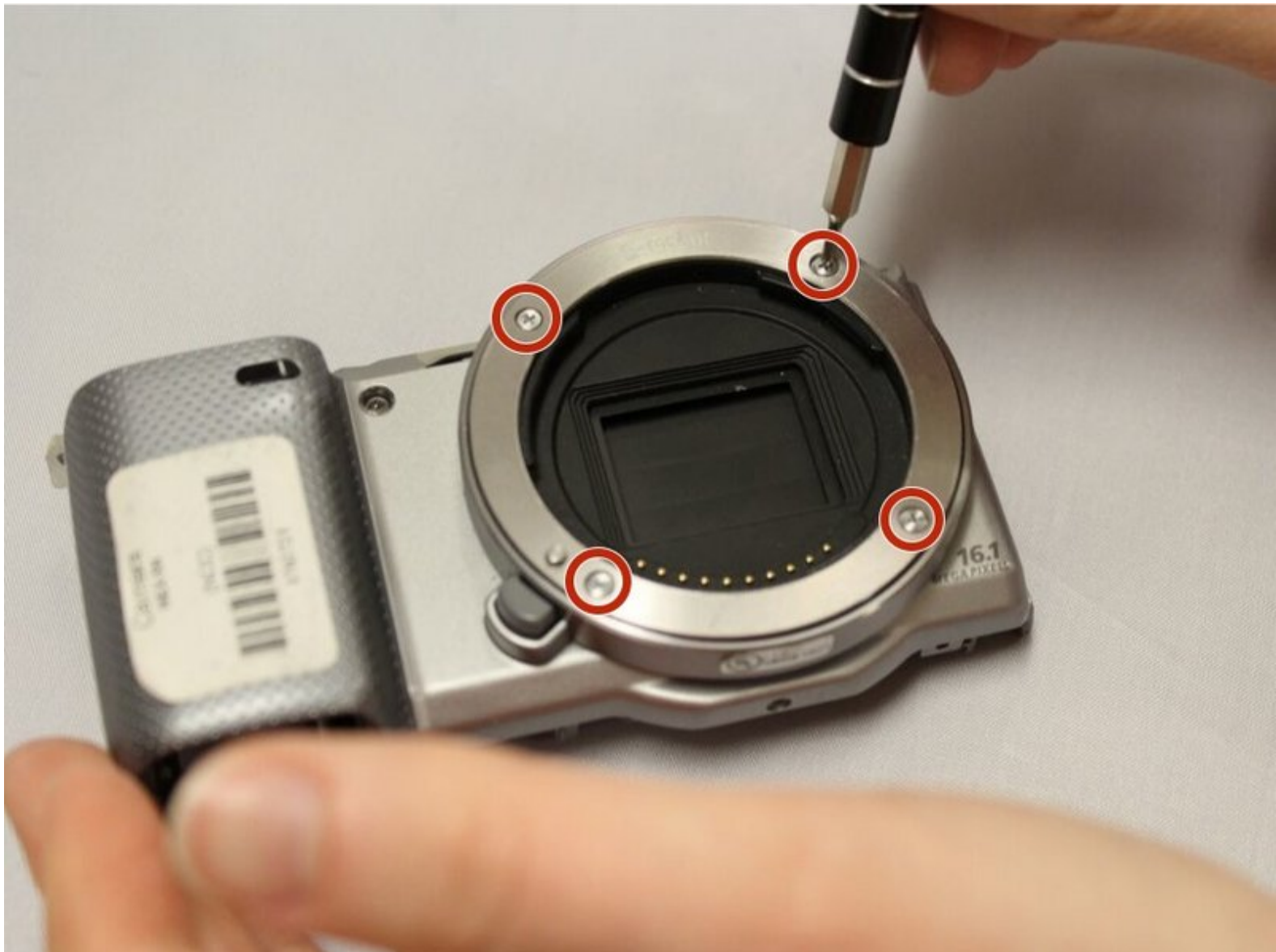




# Sony Alpha NEX-5N E-mount Replacement

A concise guide to show how to replace the E-mount of a Sony Alpha NEX-5N. Follow the steps precisely to avoid mixing up the order of small part reassembly and to make your E-mount good as new again.

Written By: Andrea Tobar



---

## INTRODUCTION

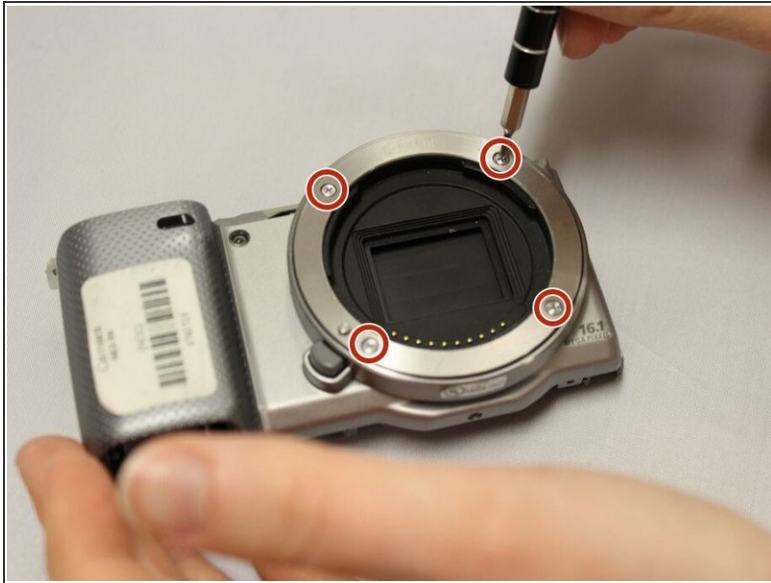
The E-mount, the interface between a camera body and a lens, can be easily replaced when it's time to change a dented or non-functioning E-mount. E-mount is also referred to as a lens mount when the camera it is attached to has an interchangeable lens.




### TOOLS:

- [Phillips #000 Screwdriver](#) (1)
-

## Step 1 — E-mount



 While completing this guide, **do not** touch the **image sensor** (the center rectangle encircled by the lens mount).

- Unscrew the 4 silver 1.2 mm Phillips #000 screws along the front outer lens mount.
-  Applying extra force to unscrew these 4 screws may be necessary.
- Detach the outer lens mount ring.

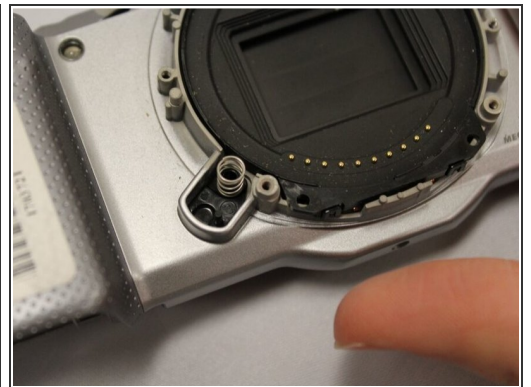
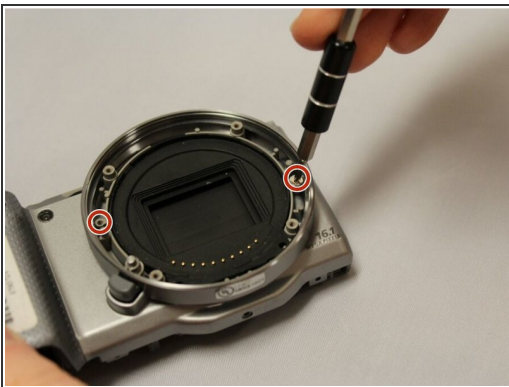
## Step 2



**i** Pay attention to the positioning and order of the spacing rings for reassembly.

- Using your fingers, pull out the first black spacer ring.
- Repeat the previous step for the second silver spacer ring.

## Step 3



- Unscrew the 2 silver 1.2 mm Phillips #000 screws on opposing sides in the lens ring area.
- Using your fingers, easily pull off lens housing. This will complete the removal of the E-mount.

**i** The lens release button and the small spring underneath will be loose.

To reassemble your device, follow these instructions in reverse order.