



Sony Alpha NEX-5N LCD Glass Screen Protector Replacement

Replace your dirty, peeling LCD glass screen protector to see the display clearly.

Written By: Tessa Reininger



INTRODUCTION

A glass screen protector replacement piece designated for a Sony NEX-5N is necessary to replace the current LCD screen protector. Air bubbles that develop below the screen will not disappear over time, but result in irreversible peeling. Replacing the LCD glass screen protector will enhance the display's visual clarity.



TOOLS:

- [Tweezers](#) (1)
 - [Microfiber Cleaning Cloths](#) (1)
-

Step 1 — LCD Glass Screen Protector



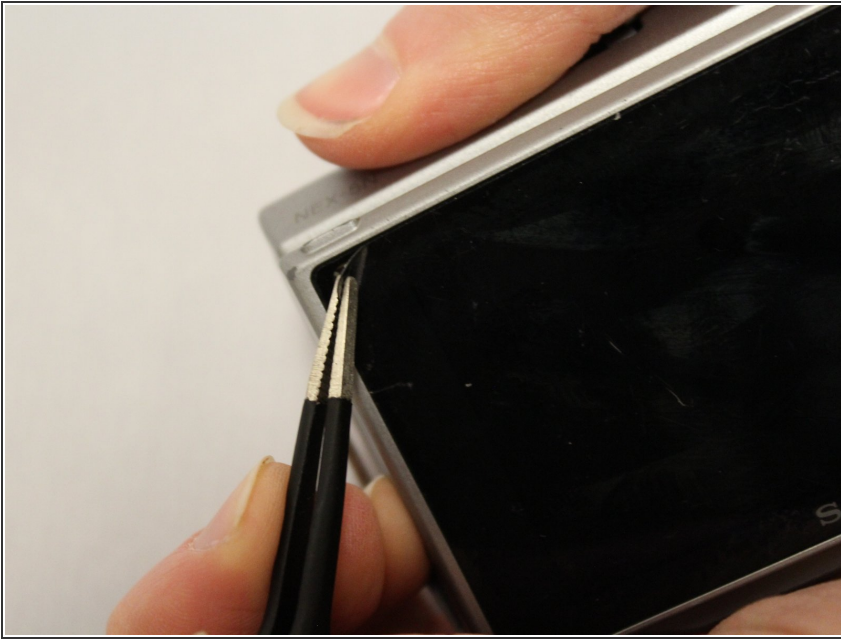
- Utilize the power button to turn off the device.

Step 2



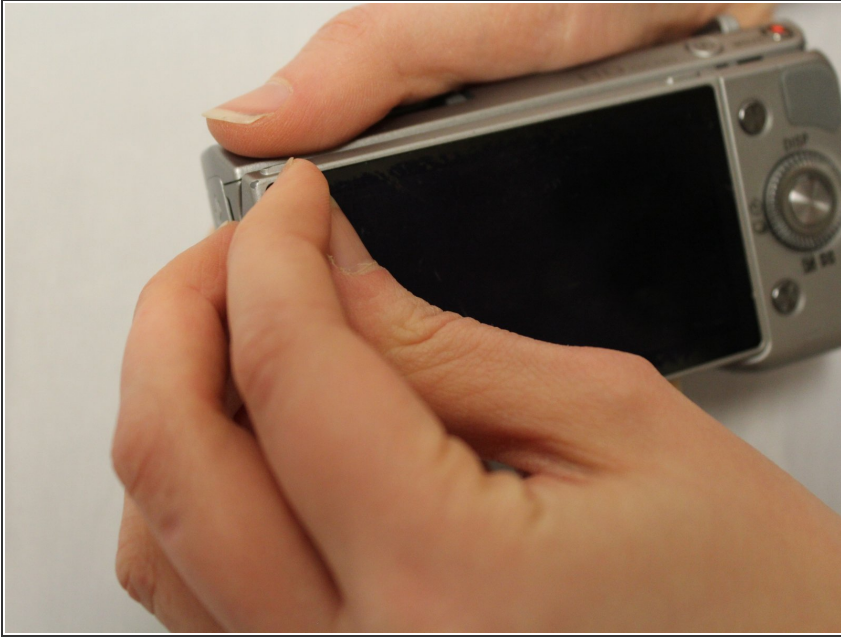
- Find a firm, comfortable grip on the device with one hand, and apply pressure to the LCD screen, placing your fingers on the glass.
 - With your other hand (if the corners are not already peeling), utilize your fingernails to locate and pick at the most vulnerable corner of the LCD glass screen protector.
- ⚠ Do not peel off the LCD glass screen protector yet.
- ℹ For reassembly, do not perform this step. You have already completed reassembling your device.

Step 3



- Slowly, to avoid ripping the protector or damaging the LCD touch screen beneath, peel the LCD glass screen protector back with your fingers, or a pair of tweezers, depending on what works best for you.
- ⓘ When difficulties arise to perform a clean peel, try pulling at the protector from different angles, or apply more pressure. If necessary, pick at a different corner of the protector and peel from there.
- Continue peeling until the LCD protector is completely detached from the LCD touch screen.
- ⓘ For reassembly, take out the new LCD glass screen protector and pull off the paper on the back to expose the sticky side of the protector. Ensure the sticky side of the LCD glass screen protector is facing the LCD touch screen. Line up the corners of the LCD glass screen protector with the appropriate, corresponding corners of the LCD touch screen.

Step 4



- Utilize your finger nails to carefully clean off remaining glue residue.
- ⚠ If the glue residue is not coming off, do not scrape vigorously. Too much force can cause damage to the LCD touch screen, leaving scratches and distortion.
- ⓘ Leave the glue residue on the screen if the substance is not coming off easily. Leaving the glue will not cause device performance issues.
- ⓘ For reassembly, Ensure all the corners are still lined up! Press the new LCD glass screen protector to the LCD touch screen. Smooth your hand across the screen and apply pressure to wipe out any wrinkles and ensure the new LCD glass screen protector is effectively sticking to the touch screen.

Step 5



- Take a clean, dry microfiber cloth and gently wipe the LCD touch screen off. If necessary, sparsely dampen the cloth with water.
- ⚠ Do not utilize excessive amounts of water, nor liquid-based cleaners and solvents. Otherwise, you can damage the touch screen.
- ℹ For reassembly, repeat, except apply the step to your newly installed LCD glass screen protector.

To reassemble your device, follow these instructions in reverse order.