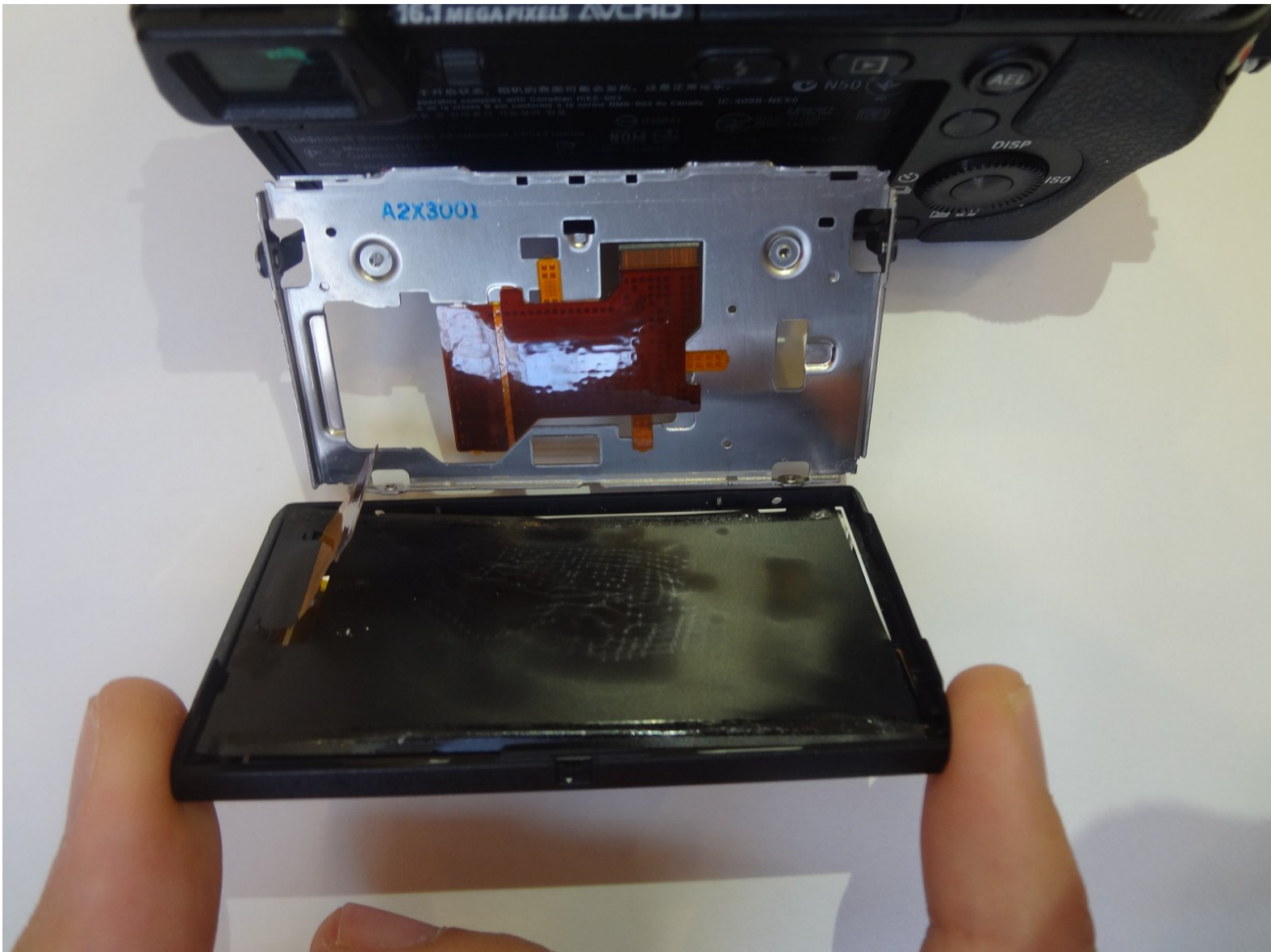




# Sony Alpha NEX-6 LCD Screen Replacement

A thorough guide to replacing the Liquid Crystal Display Screen for the Sony Alpha NEX-6 camera.

Written By: Clayton Dale



## INTRODUCTION

This guide will begin by taking off back cover of screen assembly. The guide will then explain how to uncover and disconnect the LCD Ribbon cable. The screen will then be removed from the screen mount assembly.




### TOOLS:

- [Phillips #00 Screwdriver](#) (1)
  - [Spudger](#) (1)
  - [Tweezers](#) (1)
  - [iFixit Opening Tools](#) (1)
-

## Step 1 — Battery



 Prior to operating on this device, be sure the camera is turned **OFF**. With power, the camera can be a dangerous device to work with.

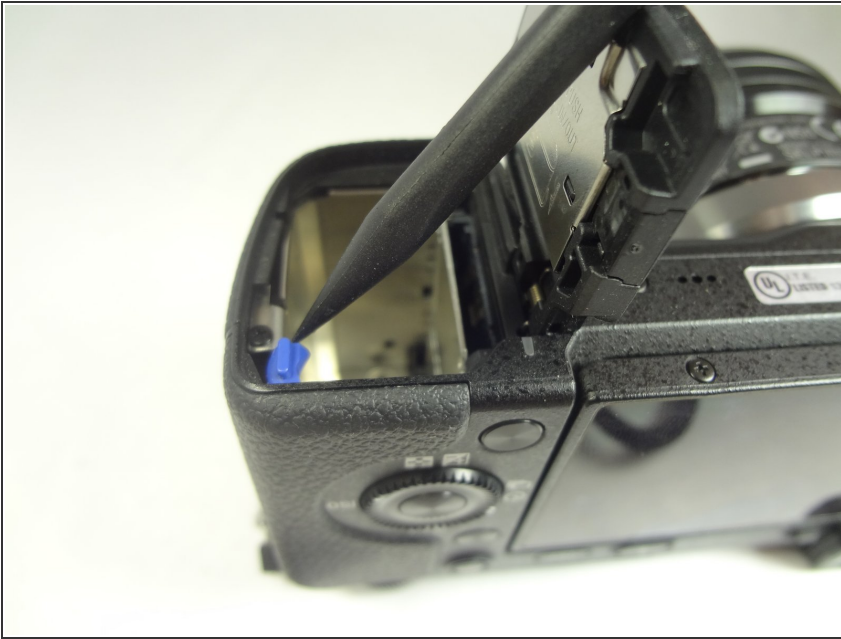
- Turn the camera off by switching the power knob "OFF" text to the white selector dot.

## Step 2



- Flip the camera upside-down and carefully place it on a flat surface.
- With the lens facing outward, locate the battery compartment - indicated by a grooved latch.
- Push the latch to the right to unlock the battery compartment. The door should flip upward.

### Step 3



- With the compartment open, locate a blue tab shown with spudger
- Press the tab to the side (to the left, or toward the camera wall). This will eject the camera battery.

### Step 4 — Removing back screws



- Remove the two 1.0 mm Phillips #00 screws from back of the LCD screen.



## Step 5 — Removing bottom screws



- Remove the two 1.5 mm Phillips #00 screws from the bottom of the screen mount assembly.

## Step 6 — Back cover



- Using a plastic opening tool pry off the back cover from the screen assembly.
- Remove back cover by lifting it away from the screen using tweezers.

## Step 7 — Ribbon cable



- Release the ribbon cable by lifting the black locking latch with the plastic opening tool.
- Pry out the ribbon cable by carefully sliding it out of the connection slot using a spudger.

## Step 8 — Upper plastic separator



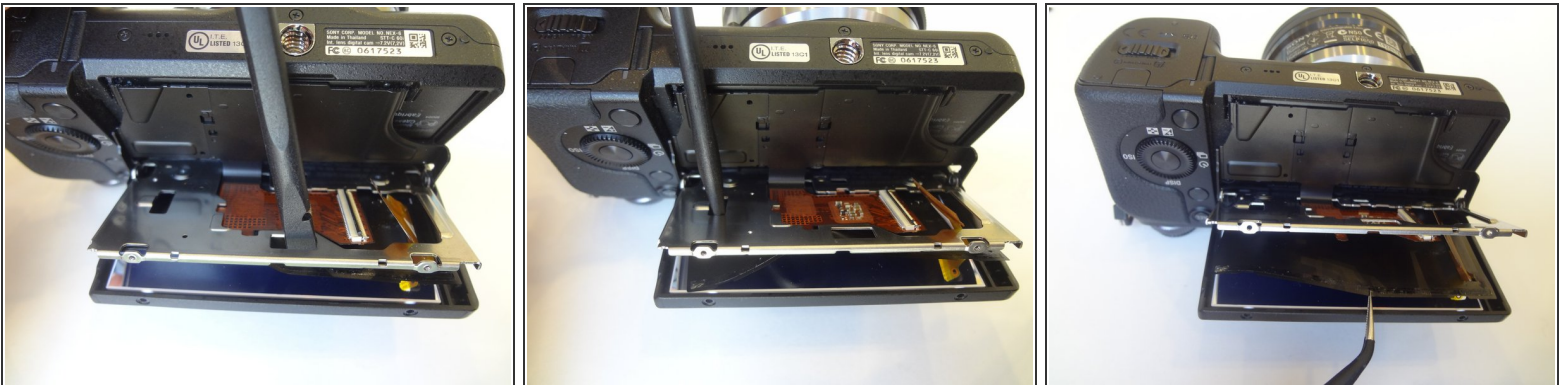
- Lift and slide out the upper black plastic separator using tweezers.

## Step 9 — Lower plastic separator



- Lift and remove the lower black plastic separator using tweezers.
- Using the pointy side of a spudger push in the screen lock button release it.
- The screen lock button can now be removed.

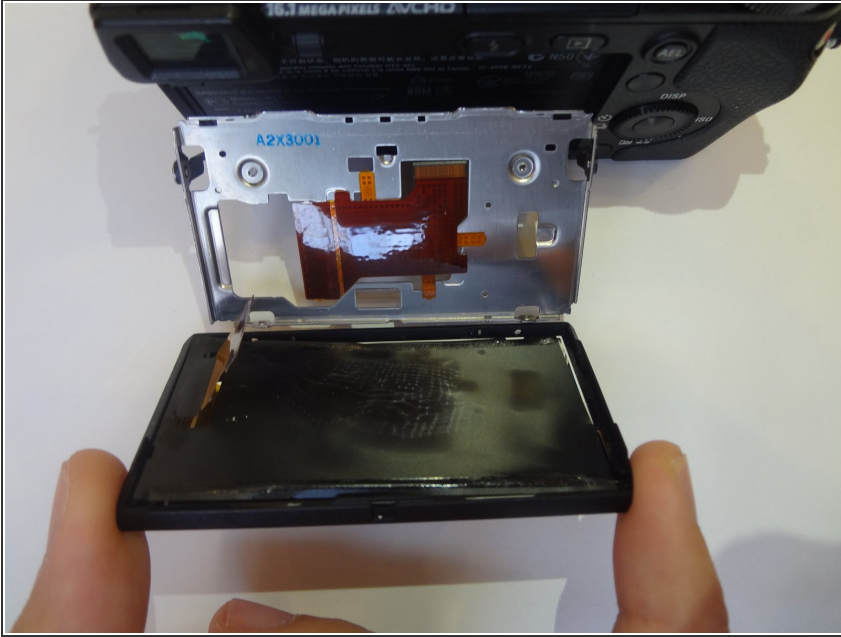
## Step 10 — Black nylon sheet



- Using the flat end of the spudger, push on the black nylon sheet glued to the metallic frame to peel it of.
- ⚠ Apply force from different spots to avoid tearing the sheet.
- Remove the black nylon sheet using tweezers.



## Step 11 — Screen Removal



- Gently wiggle the screen loose and remove it from the mount.

To reassemble your device, follow these instructions in reverse order.