



# Sony Alpha NEX-C3 Back Panel Replacement

How to remove the back panel in the Sony Alpha NEX-C3.

Written By: Jonathan Chen



---

## INTRODUCTION

The back panel covers internal components. This guide will help remove it in order to access those components.



### TOOLS:

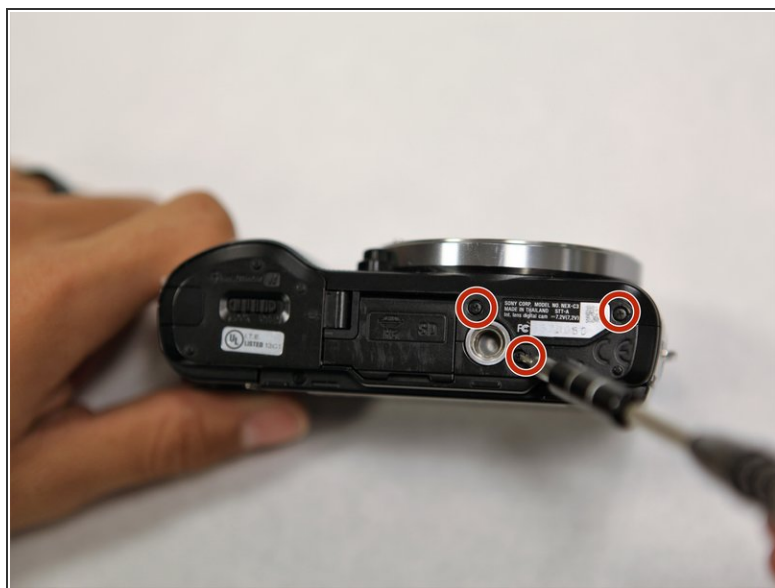
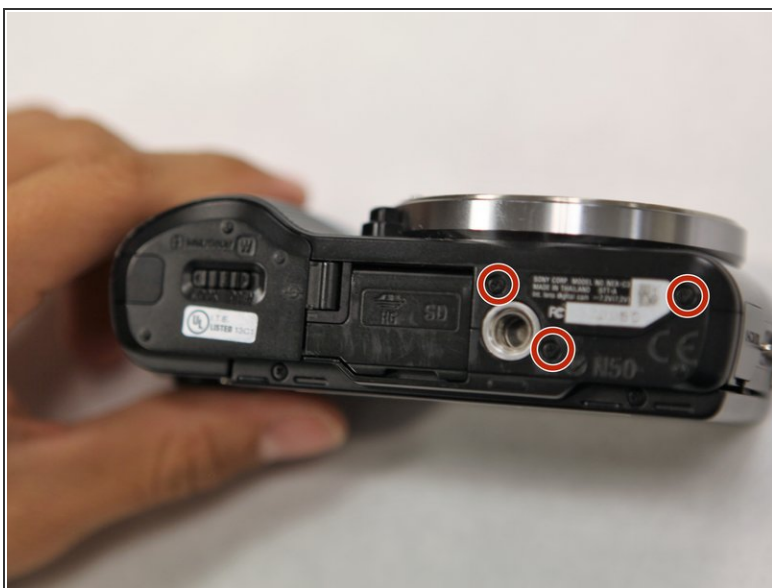
- [Phillips #000 Screwdriver](#) (1)
-

## Step 1 — Back Panel



- Use a Phillips head 000 screwdriver to remove the 4.0mm screw at the side opposite of the USB port.

## Step 2



- Use a Phillips head 000 screwdriver to remove the three 4.0mm screws on the bottom of the camera.

## Step 3



- Tilt up the LCD screen.
- Use a Phillips head 000 screwdriver to remove the two coarse 4.0mm screws near the bottom of the camera.

## Step 4



- Gently pry off the back panel, by wiggling it around the LCD screen.

To reassemble your device, follow these instructions in reverse order.