



Sony Alpha NEX-C3 Control Wheel Replacement

How to replace the control wheel in the Sony Alpha NEX-C3.

Written By: Jonathan Chen



INTRODUCTION

The control wheel is used to navigate through pictures, and can wear down over time, and will need replacement.



TOOLS:

- [Phillips #000 Screwdriver](#) (1)
-

Step 1 — Top Panel



- Turn the camera off by sliding the power switch.

Step 2



- Use a Phillips head 000 screwdriver to remove the 4.0mm screw inside the USB port.

Step 3



- Use a Phillips head 000 screwdriver to remove the one 4.0mm screw on the side opposite of the USB port near the shutter button.

Step 4



- Open the flap at the top of the camera.
- Use a Phillips head 000 screwdriver to remove the two 4.0mm screws inside.

Step 5



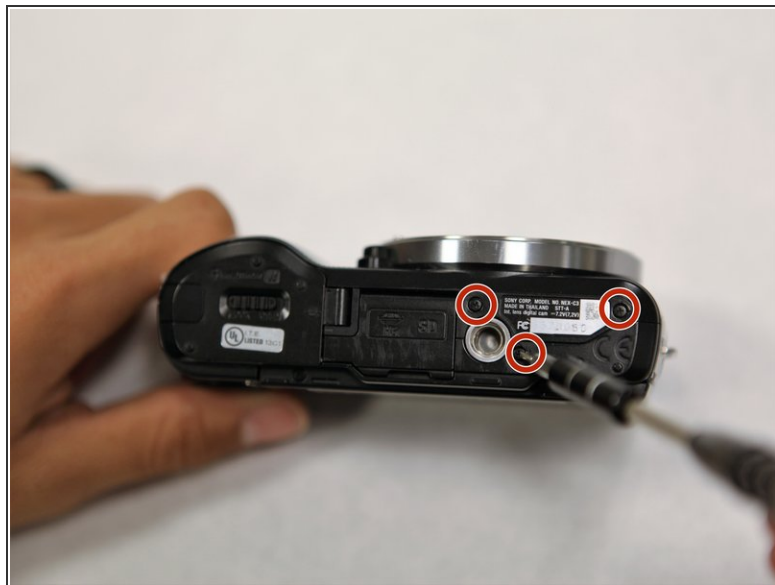
- Gently lift off the top panel with your hands.

Step 6 — Back Panel



- Use a Phillips head 000 screwdriver to remove the 4.0mm screw at the side opposite of the USB port.

Step 7



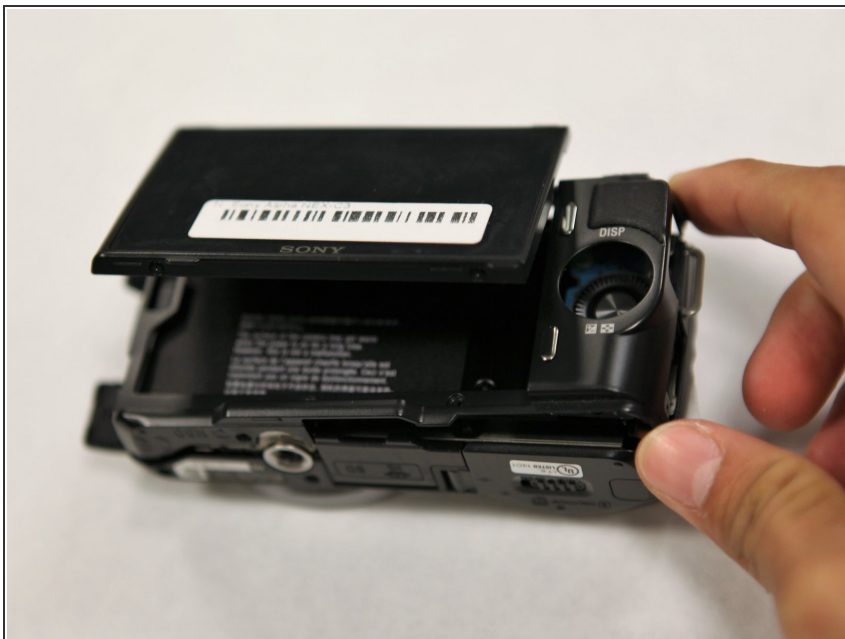
- Use a Phillips head 000 screwdriver to remove the three 4.0mm screws on the bottom of the camera.

Step 8



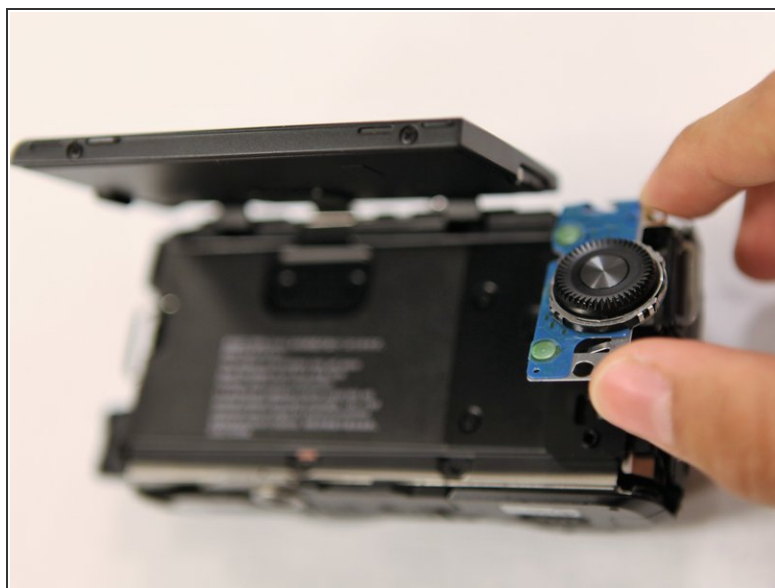
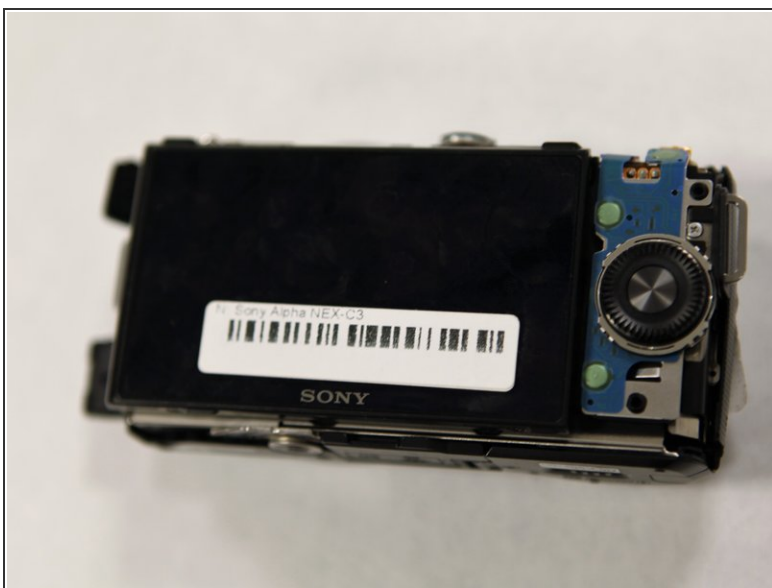
- Tilt up the LCD screen.
- Use a Phillips head 000 screwdriver to remove the two coarse 4.0mm screws near the bottom of the camera.

Step 9



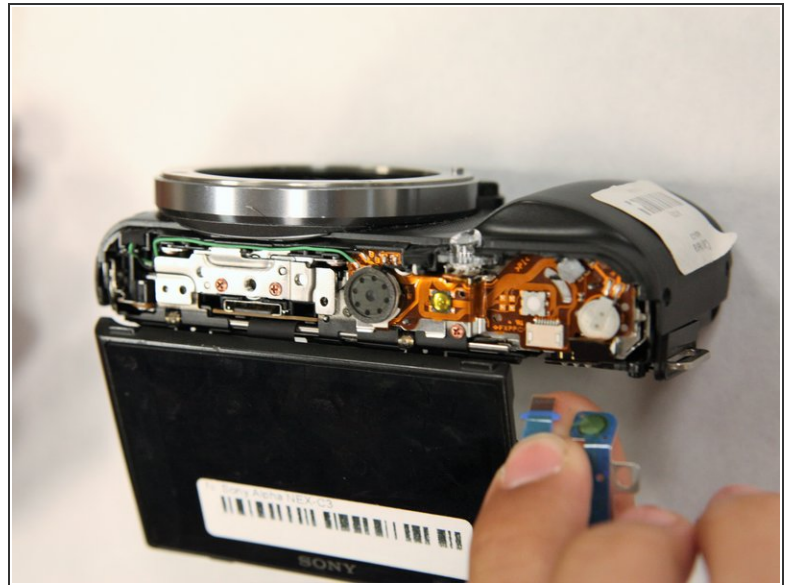
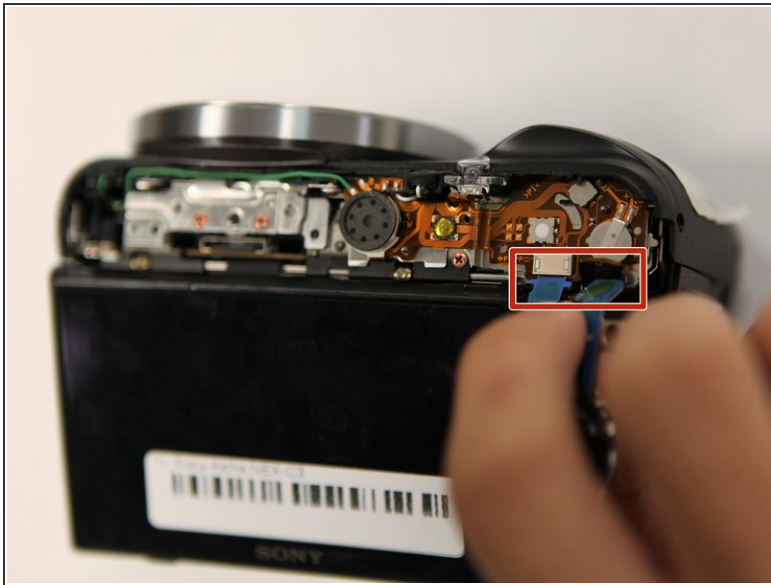
- Gently pry off the back panel, by wiggling it around the LCD screen.

Step 10 — Control Wheel



- Tilt up the LCD screen.
- Grab the silver plate, and gently pry it up.

Step 11



- Gently pinch blue ribbon cable, and pull it out of the port.

To reassemble your device, follow these instructions in reverse order.