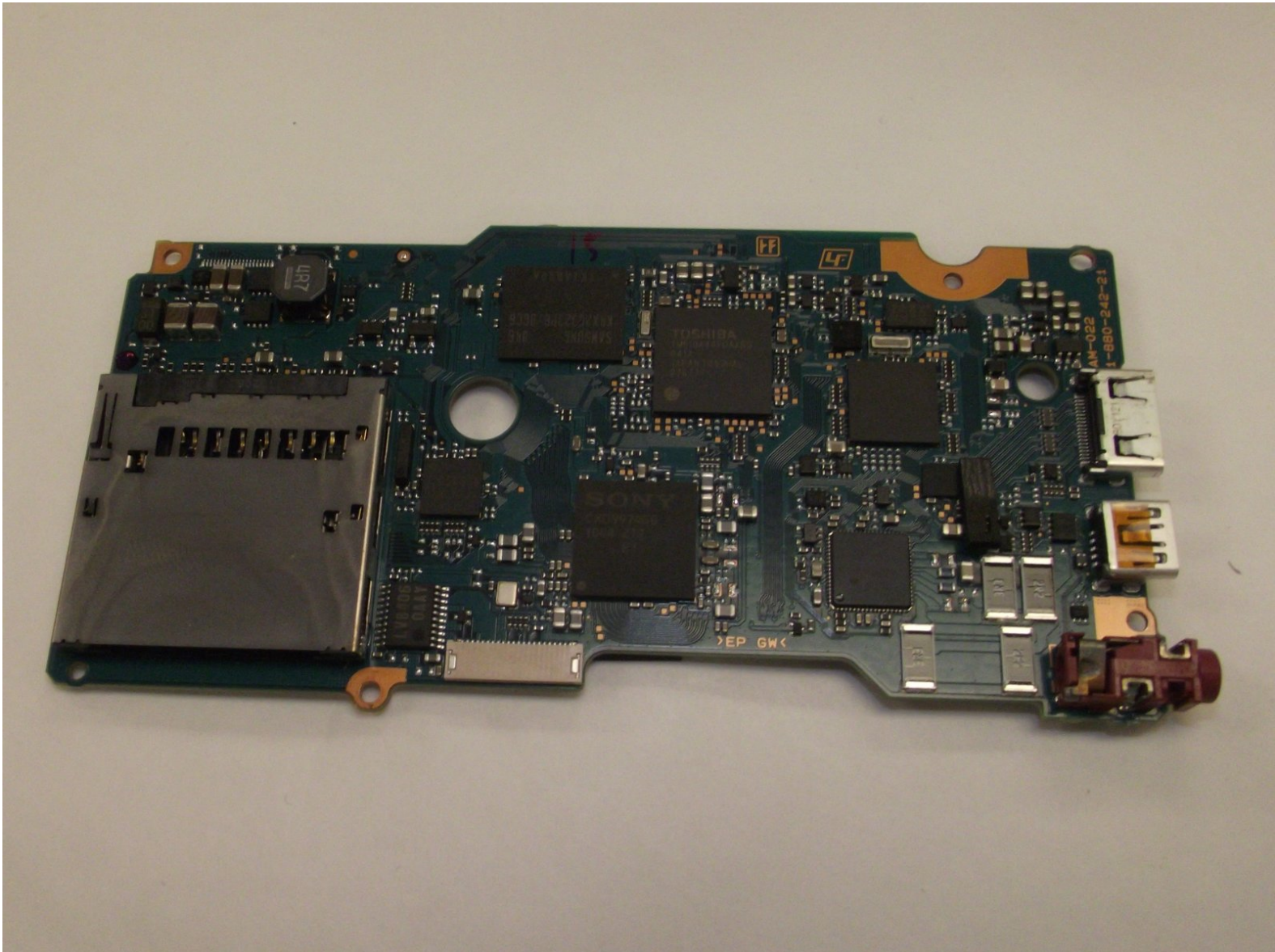




# Sony Alpha SLT-A55V Motherboard Replacement

For this guide you will be replacing the motherboard for a Sony SLT-A55V.

Written By: Sultan Almunif



## INTRODUCTION

For this guide you will be replacing the motherboard for a Sony SLT-A55V. In order replace this part you will need precision set of screw drivers, and a set of plastic opening tools to "pop" open the clips.

**We have not found an inexpensive supplier for this part. It may be cheaper to purchase a used or broken SLT-A55V for parts.**



### TOOLS:

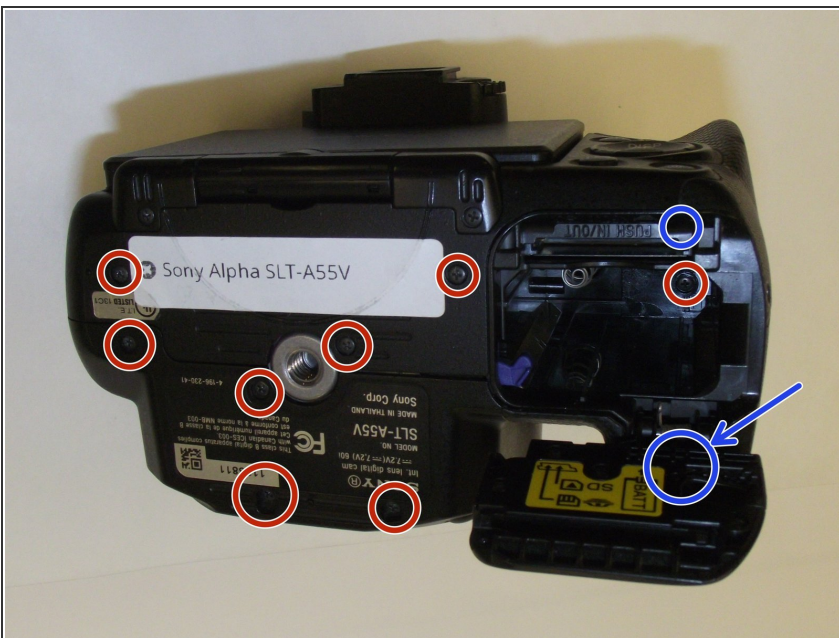
- [iFixit Opening Tools](#) (1)
- [Spudger](#) (1)
- [Precision Tweezers Set](#) (1)
- [64 Bit Driver Kit](#) (1)

## Step 1 — Motherboard



- Start by removing the focusing knob on the back of the camera.

## Step 2



- Remove all the screws on the bottom of the camera. There are two screws that can not be directly seen in this photo. These screws are shown in blue. One screw is hidden by the battery cap and the other is hidden by the battery recess.



### Step 3



- Remove three screws from the right side of the camera.

### Step 4



- While you are on the left side of the camera, lift the HDMI / USB cover and remove the two screws that are hidden.

## Step 5



- On the top of the camera there is a black plastic sticker that hides two screws which must be removed.
- This sticker can be re-used. Peel the sticker off and place it on a clean piece of parchment paper or wax paper. This will prevent dirt and dust from getting on the adhesive.
- Remove the two screws that lie beneath the sticker. The arrows indicate the location of these screws.

## Step 6



- Remove two screws from the left hand side of the camera.

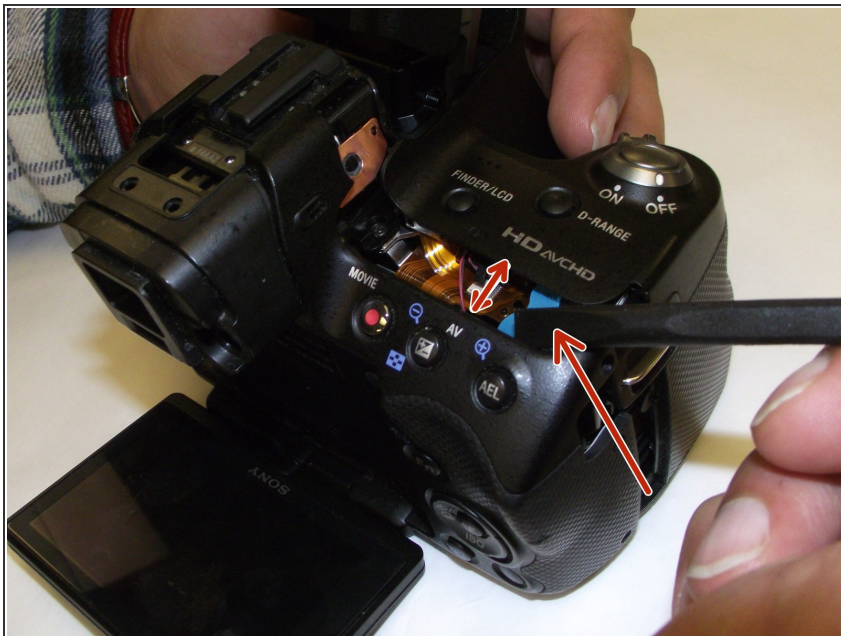


## Step 7



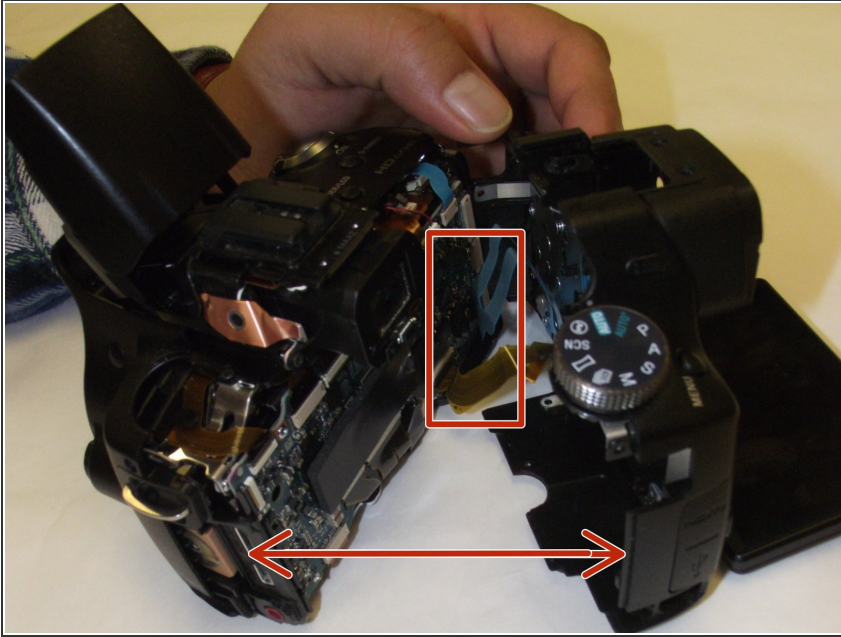
- Remove the two screws immediately below the flash. These screws are located on the face of the camera.

## Step 8



- All the necessary screws are removed. Begin prying the back away from the camera in order to remove the front cover.

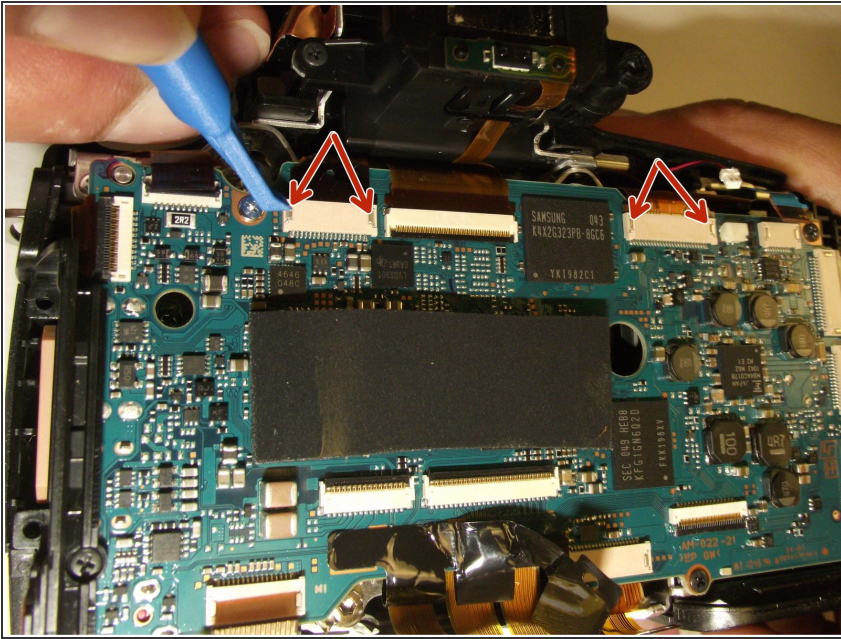
## Step 9



- Pry open the enclosure carefully. The ribbon cables for the LCD are located on the right side and will need to be disconnected from the motherboard before removing the back of the case.

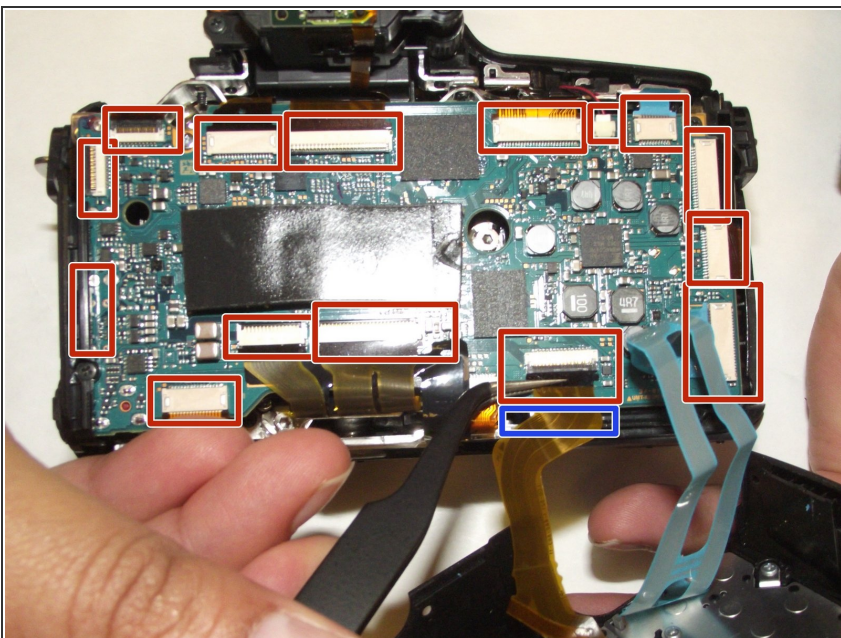


## Step 10



- Some of the ribbon cables are held in with miniature clips. These cables can be identified by the side hinge that can be released with a pointed end.

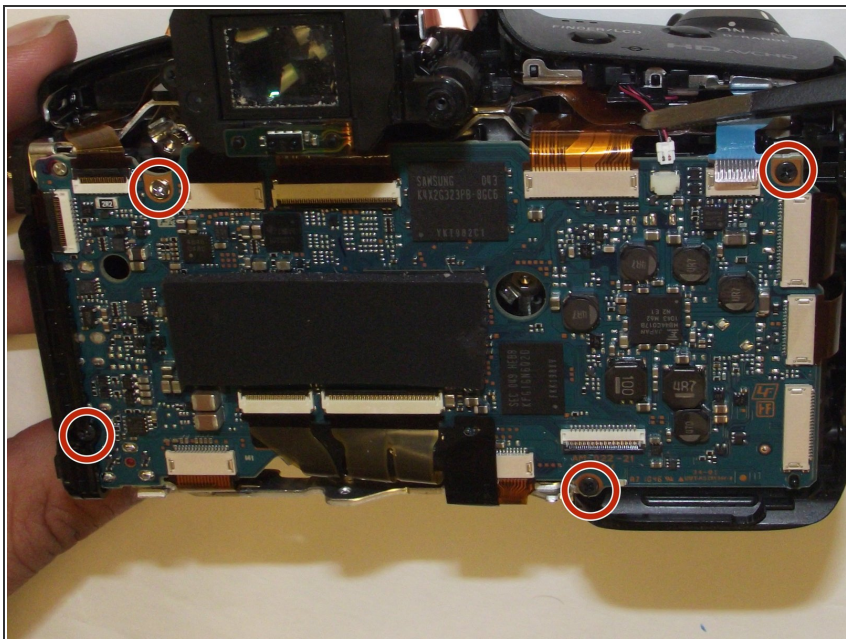
## Step 11



- Once the back of the camera is removed the motherboard is exposed.
- Remove all ribbon cables that are connected to the motherboard. There are two ribbon cables that are stacked the location marked in blue. One cable is connected under the board while the other is connected to the top.

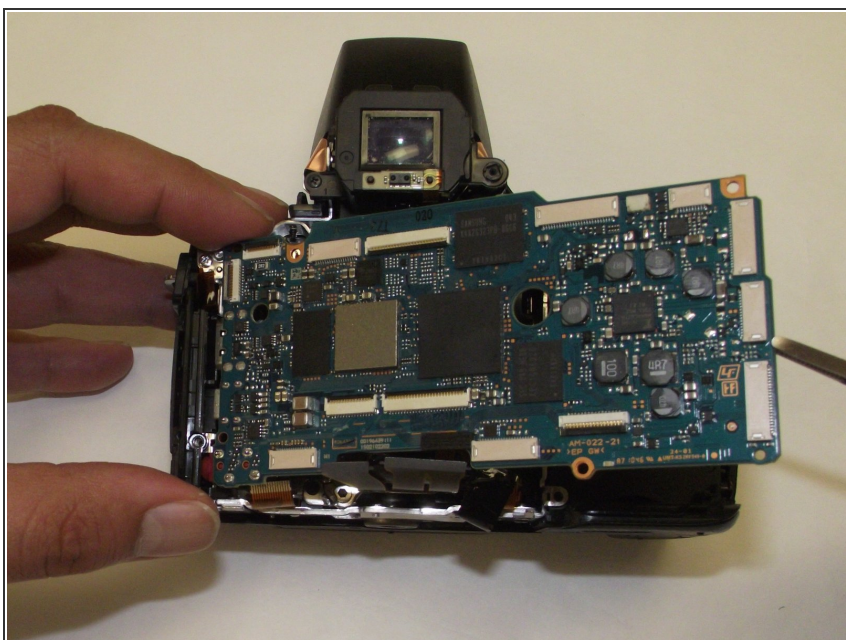


## Step 12



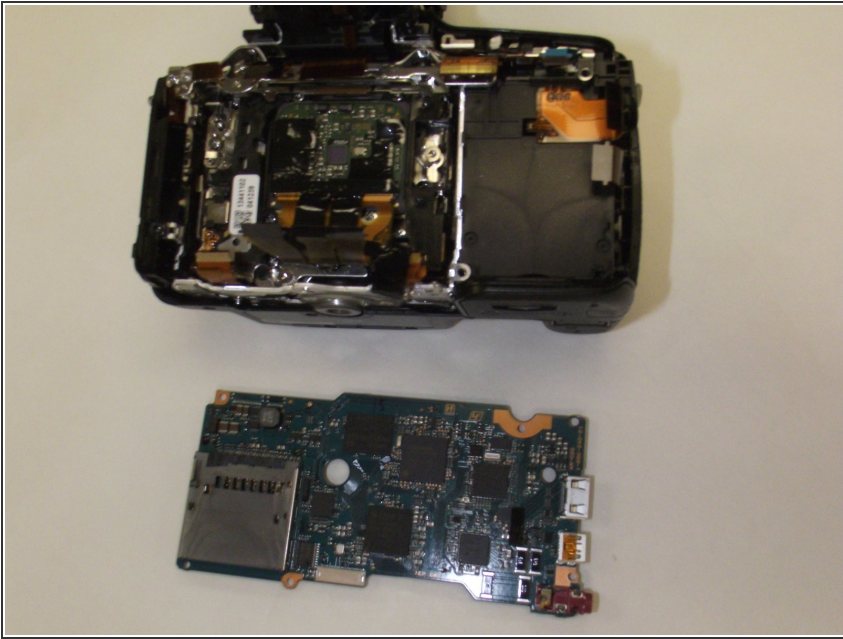
- Remove four screws to release the motherboard from the camera.

## Step 13



- Carefully remove the motherboard , this may take delicate tools in order to prevent damage to the underlying electronics.

## Step 14



- Once the motherboard has been completely unplugged and removed, it can be replaced and reassembled in reverse order.

To reassemble your device, follow these instructions in reverse order.