



Sony Alpha a7s II Tripod Socket Replacement

Tighten the screws to your loose tripod mount to create a stable connection between your camera and tripod.

Written By: Brittany Pourciau



INTRODUCTION

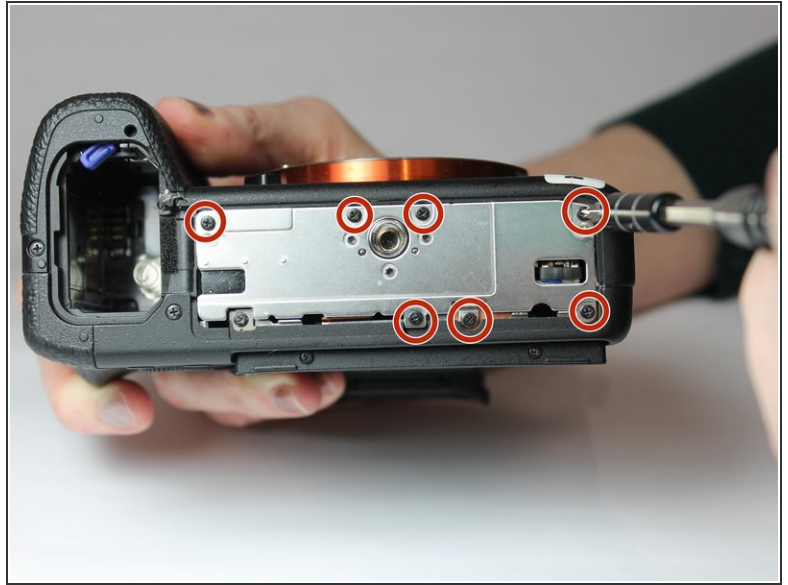
User is unable to securely mount their camera onto a tripod. A loose tripod socket can cause an unstable connection between the tripod and camera, which can contribute to blurry pictures and the possibility of your camera falling off the tripod.



TOOLS:

- [J00 JIS Screwdriver](#) (1)
 - [Tweezers](#) (1)
-

Step 1 — Tightening Tripod Socket



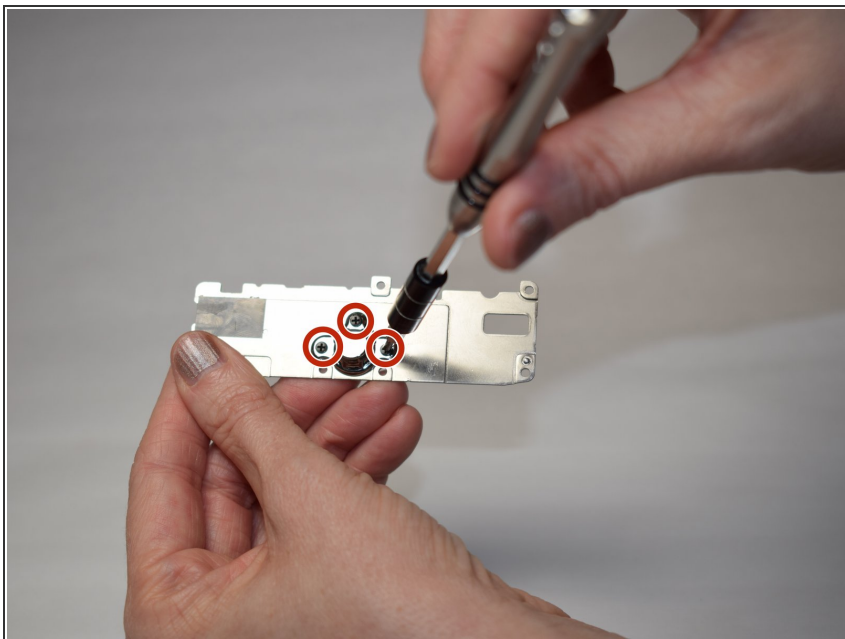
- Orient your camera so that you are looking at the bottom portion.
- Using the JIS #00 screwdriver, remove the 7 screws that are securing the metal plate to the bottom of your camera.
- ❗ You do not need to remove the recessed screw that is not connected to the bottom metal plate.

Step 2



- Remove the metal plate. Sometimes this plate can become stuck and hard to remove. Use tweezers to separate the plate from the bottom of the camera.

Step 3



- Flip the plate to the opposite side exposing the aspect that was just inside of the camera.
- Use the screwdriver J00 to tighten the 3 screws surrounding the tripod mount.
- ① To tighten the screws make sure you are turning them clockwise or to the right.

To reassemble your device, follow these instructions in reverse order.