



# Sony Audio System RM-S100 Remote Teardown

This is a Teardown for an old Sony remote I don't need anymore...

Written By: Aiden Baker



---

## INTRODUCTION

This is my first Teardown! Please don't be negative about it. But, *Constructive* Criticism is welcome.

---



### TOOLS:

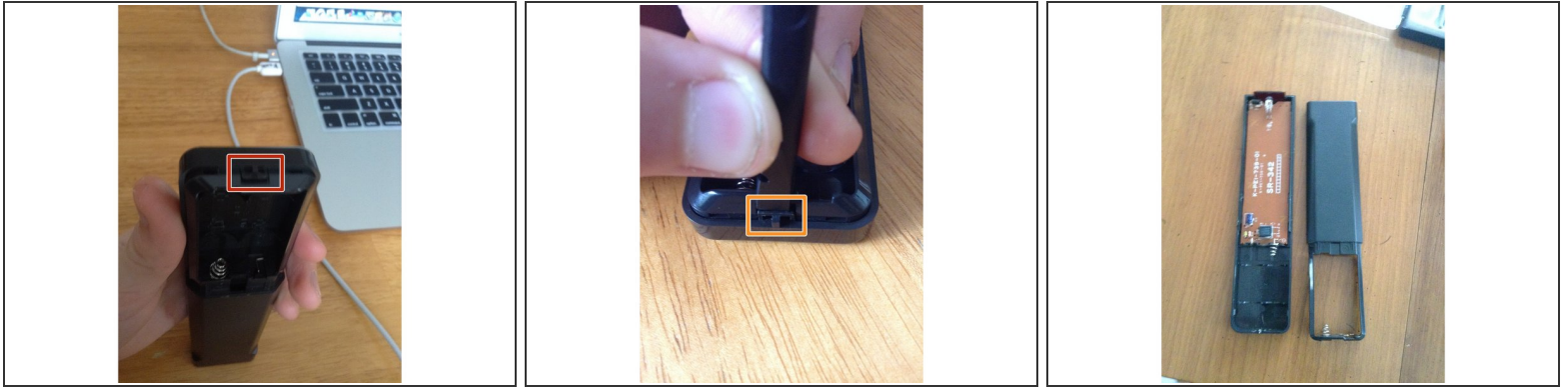
- [Spudger](#) (1)
-

## Step 1 — Sony Audio System RM-S100 Remote Teardown



- On the back of the remote there will be a battery cover. Open it up.

## Step 2



- See the little tab?

⚠ Don't break the tab when you open it. That will make it un-close-able!

- Use your [Spudger](#) to open it up

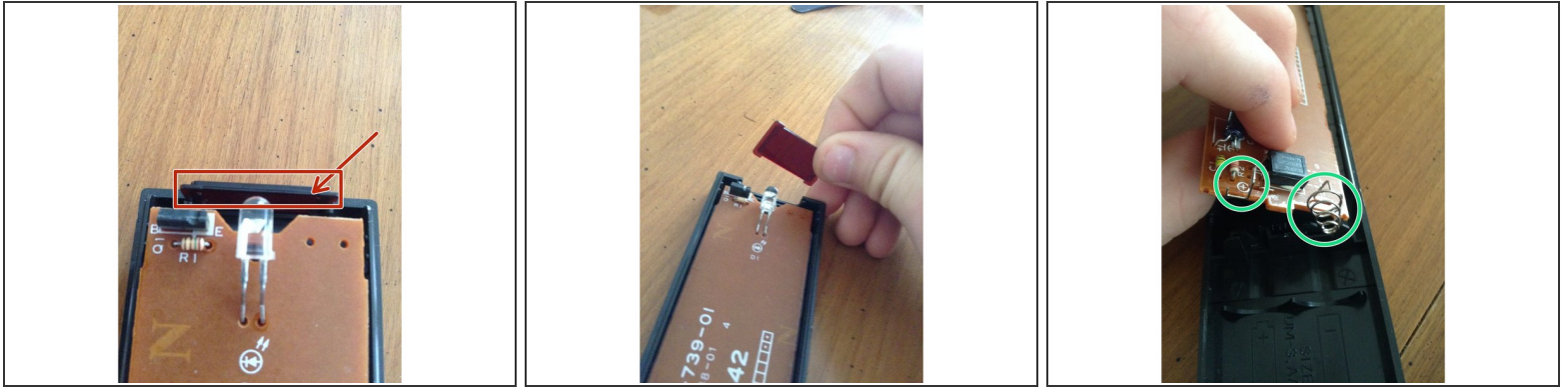
⚠ Don't snap your Spudger!

ⓘ This is so incredibly hard to open. I recommend also using a [3.5mm Flat Head](#) so you don't snap your Spudger.

- Voila! (Whatever that means...) Its open!
- This is very hard to open without breaking the tab or your Spudger. The repairability score will take a hit.

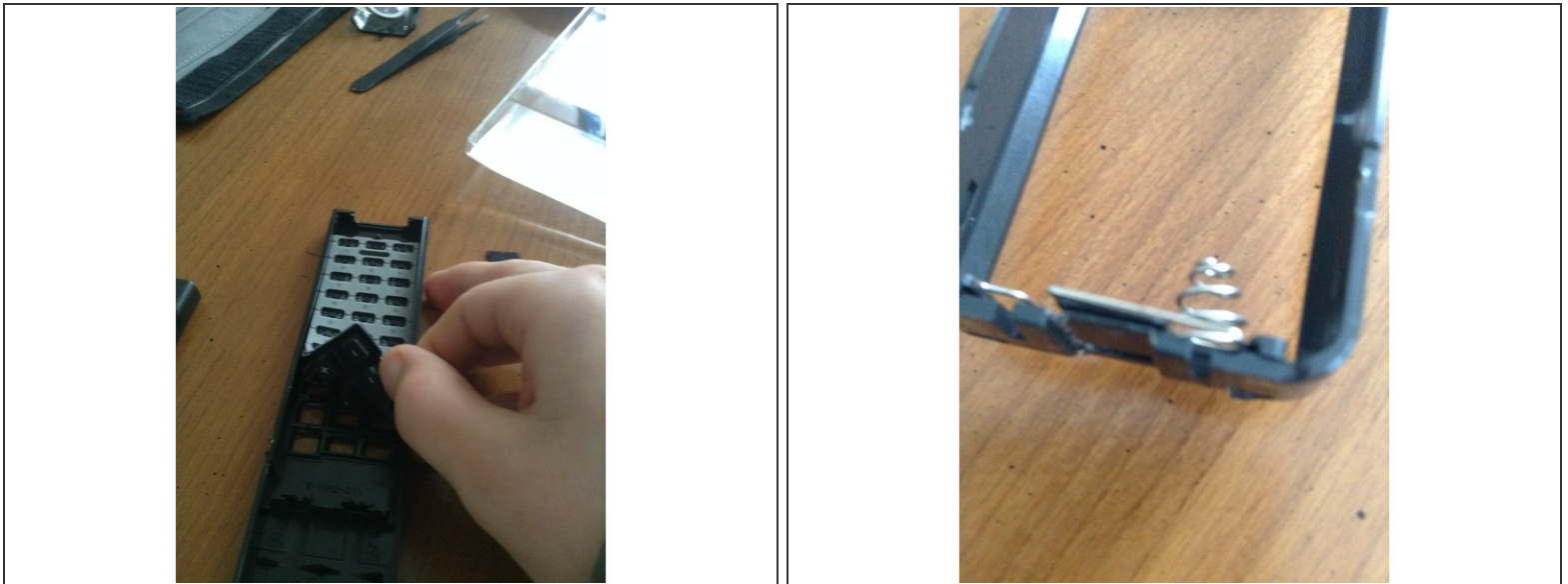


## Step 3



- Let's start by removing the red thing.
- ⓘ You can remove it with your fingers.
- Now pull out the PCB. (It is best to pull by the springs.)

## Step 4



- Pull out the button pad.
- Now, pull out the spring.
- And thats it!

## Step 5



- A total of 7 parts. (I was expecting more.)
- I would give this a repairability score of 8 out of 10.
- I almost Broke by Spudger =(
- Insanely hard to open.
- Easy to disassemble... once open.
- No screws. (No Screws to lose! No need remember which screw goes where.)
- Easy to assemble...unless the tab was broken.