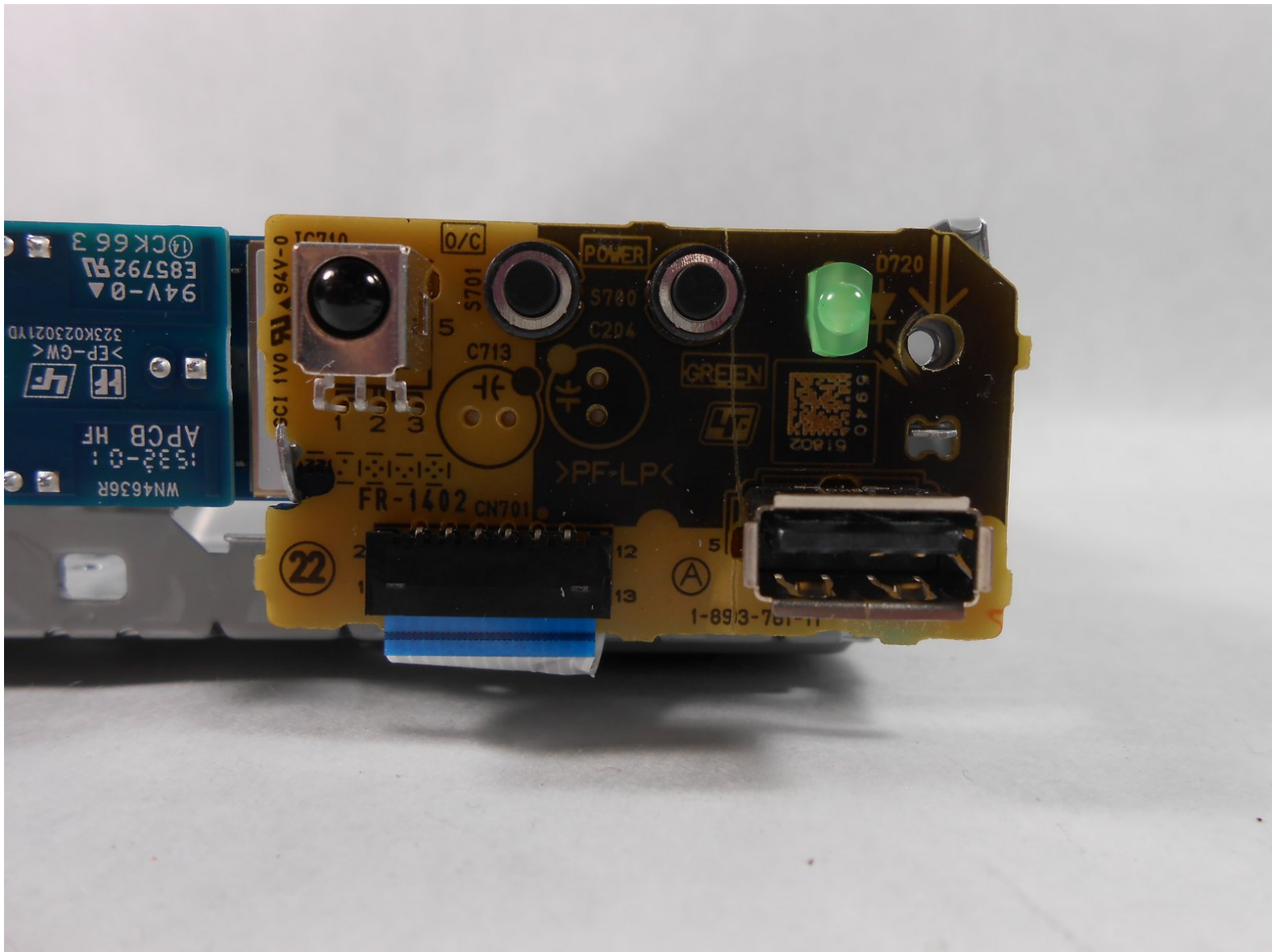




Sony BDP BX350 Device Control Board Replacement

Use this guide to remove the covers and device control board leading to replacement of the device control board of the Sony BDP BX350.

Written By: Cameron Peterson



INTRODUCTION

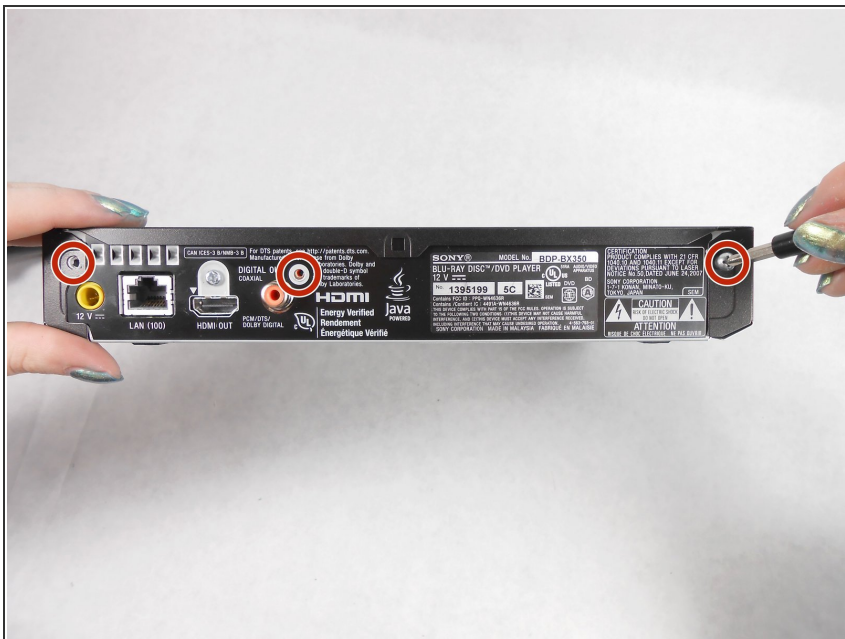
This is a step-by-step guide on how to replace your Sony BDP BX350 Device Control Board. This guide is needed if the device control board or USB drive are faulty. Make sure the device is unplugged before starting this guide.



TOOLS:

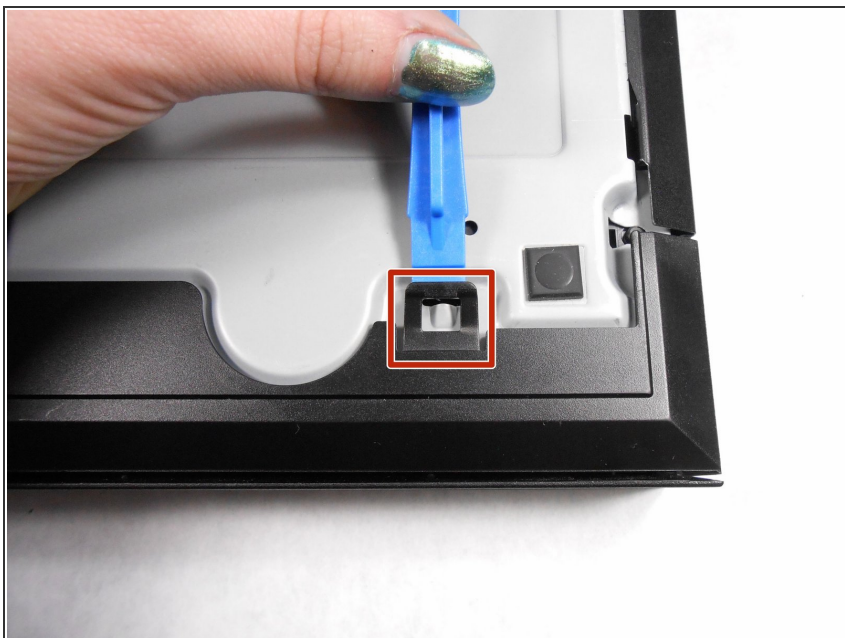
- [64 Bit Driver Kit](#) (1)
 - [iFixit Opening Tools](#) (1)
 - [J1 Screwdriver Bit](#) (1)
 - [Tweezers](#) (1)
-

Step 1 — Control Board



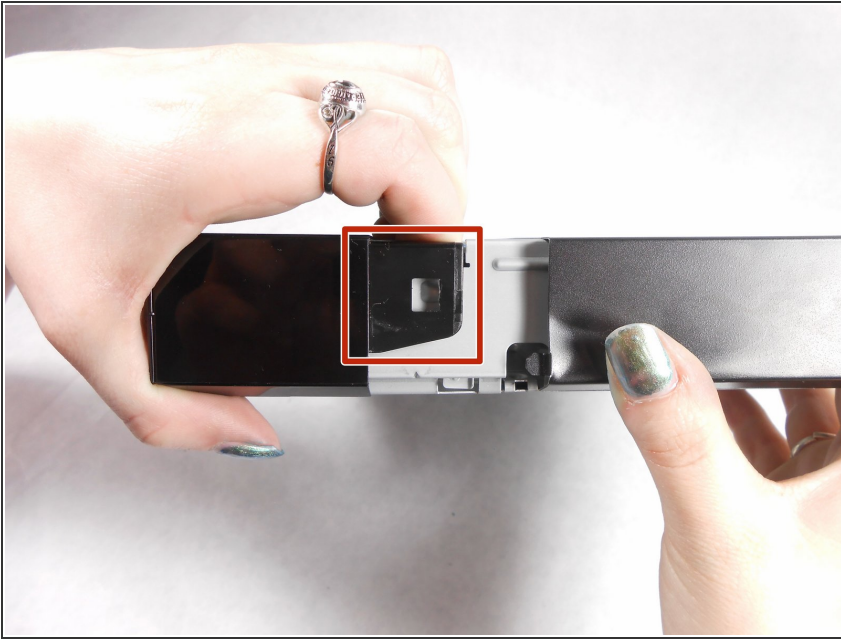
- Remove the three 10mm Philips head screws on the back of the player.

Step 2



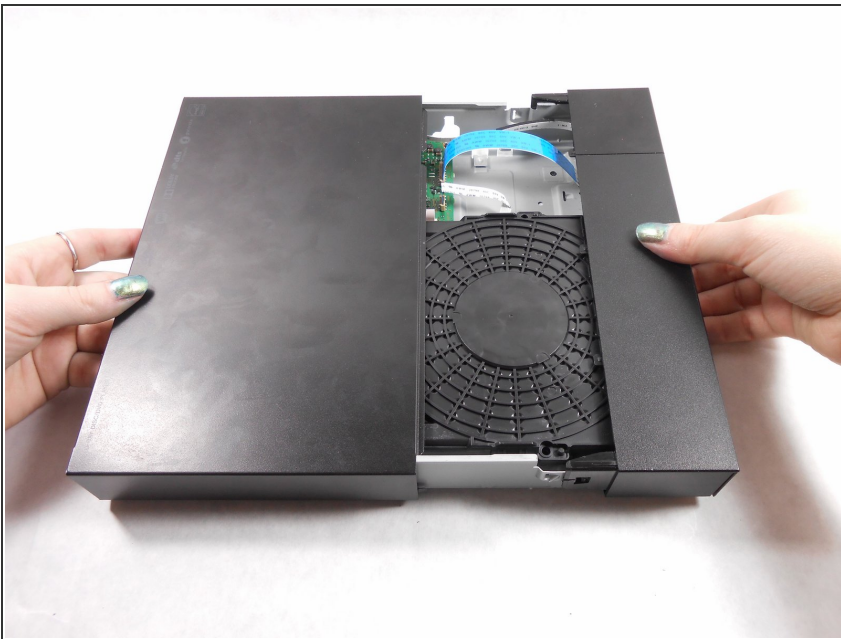
- Using an opening tool lift up the tabs located on the bottom of the plastic front cover.

Step 3



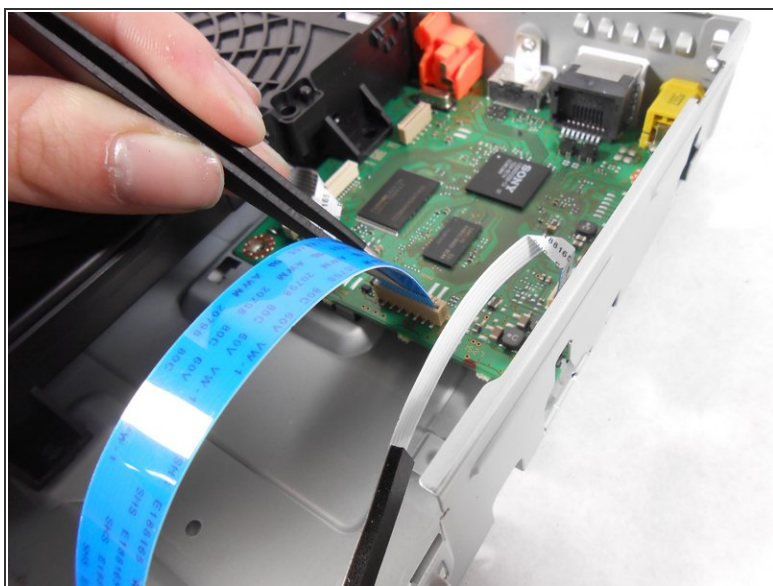
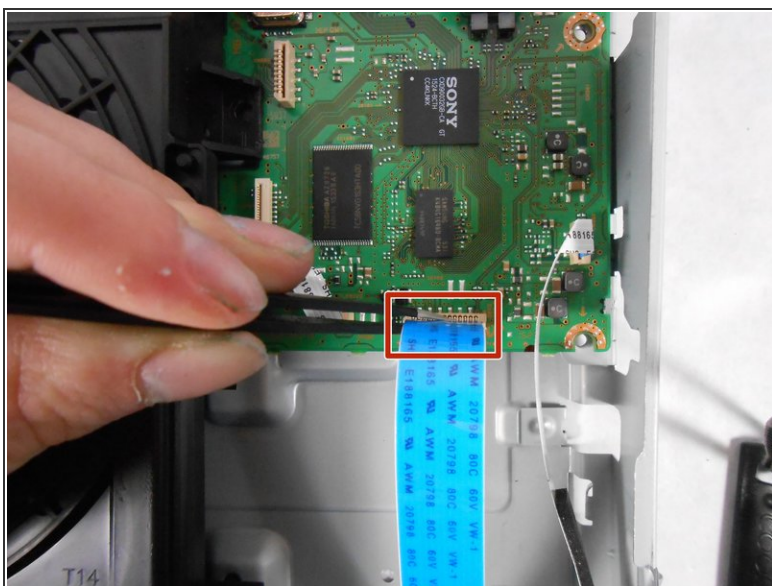
- Lift the tabs located on each side of the device to free the front cover. Begin separating the two covers from metal casing.

Step 4



- Remove both covers.

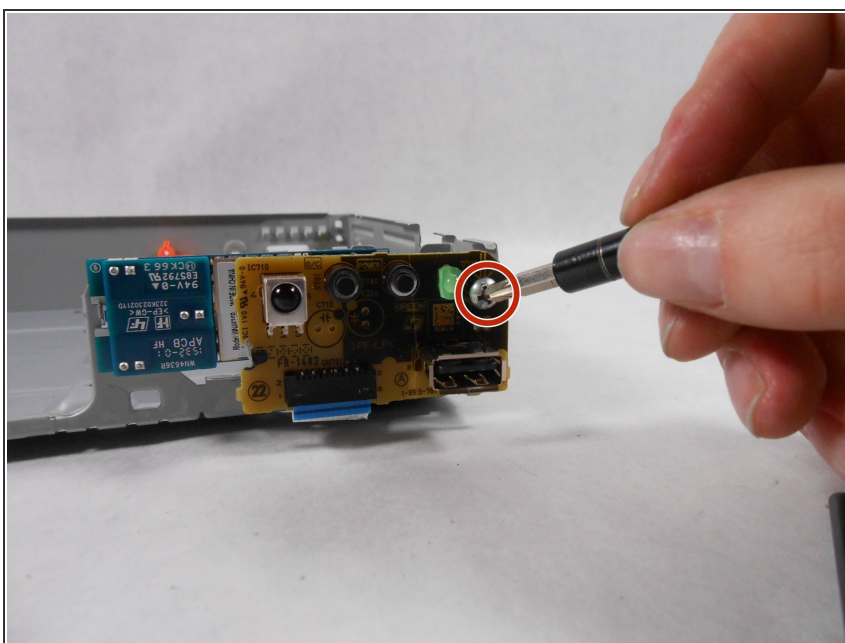
Step 5



⚠ Do not bend or tear the ribbon cable.

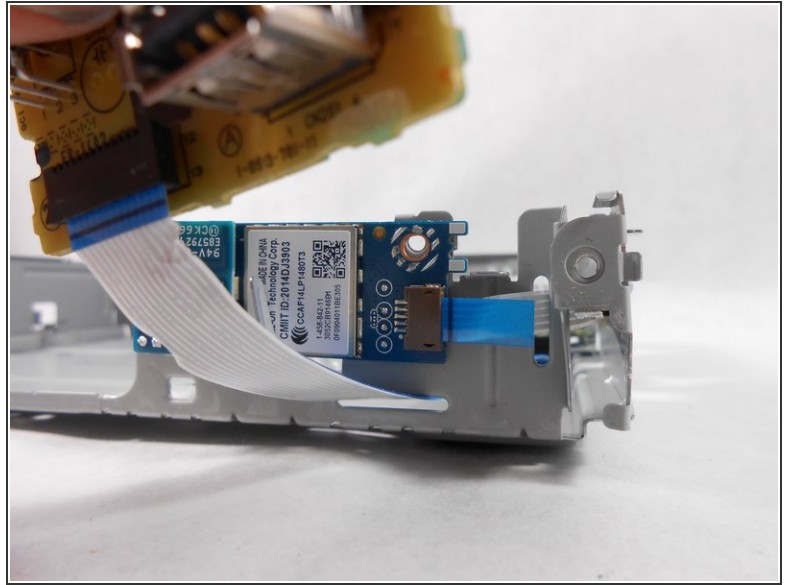
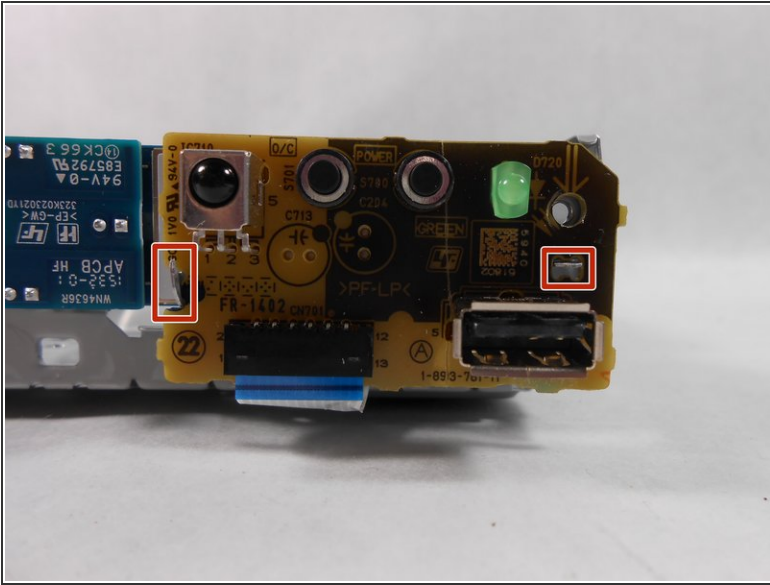
- Using the plastic tweezers, carefully remove the ribbon cable from the motherboard.

Step 6



- Unscrew the one 5mm Phillips head screw from the front of the device board.

Step 7



- ⚠ Do not bend or tear ribbon cable.
- Carefully separate the device control board from the metal casing.

To reassemble your device, follow these instructions in reverse order.