



# Sony BDP BX350 Disc Tray Replacement

Written By: Kristen Vezina



---

## INTRODUCTION

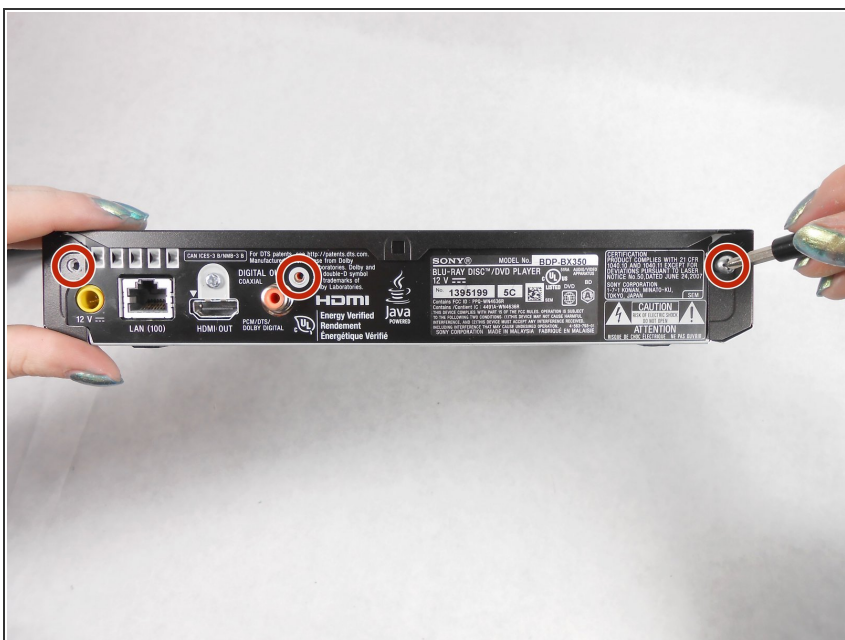
This guide is used when a disc gets stuck inside of the disc assembly and the disc tray will not eject. Do not put the disc back in the disc assembly when you complete the guide and follow the disc assembly replacement guide to replace the disc assembly. Make sure that the device is unplugged before starting the guide.



### TOOLS:

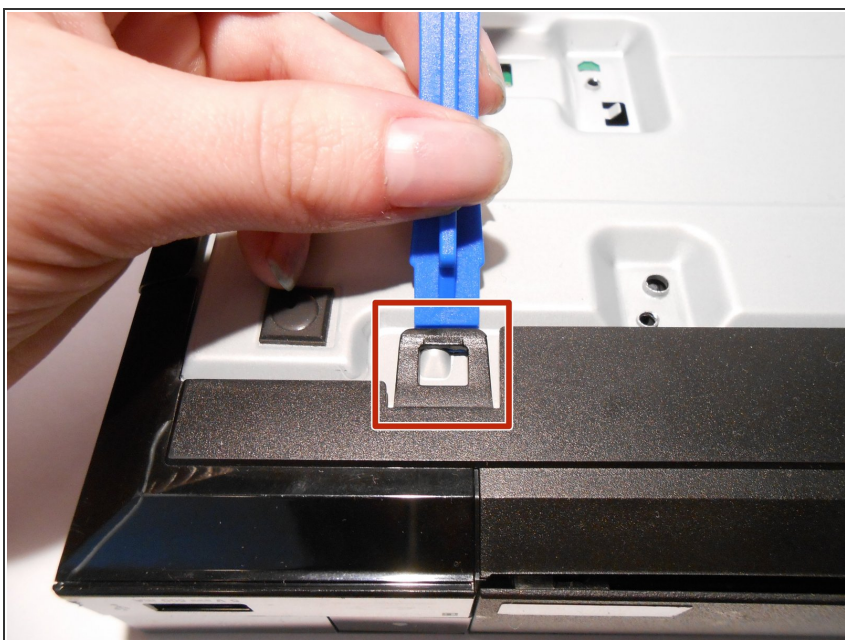
- [64 Bit Driver Kit](#) (1)
  - [iFixit Opening Tools](#) (1)
  - [J1 Screwdriver Bit](#) (1)
-

## Step 1 — Disc Assembly



- Remove the three 10mm Philips head screws on the back of the player.

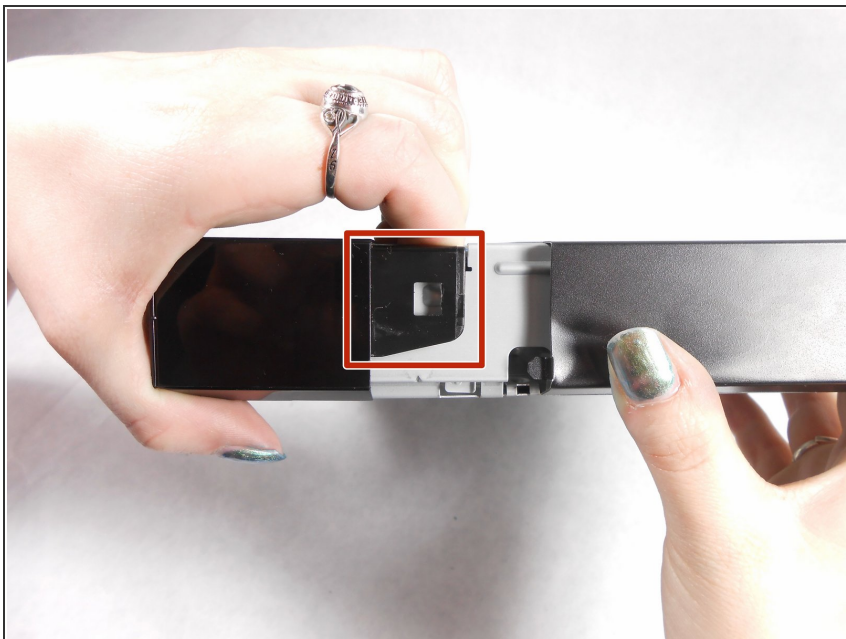
## Step 2



- Using an opening tool lift up the tabs located on the bottom of the plastic front cover.



### Step 3



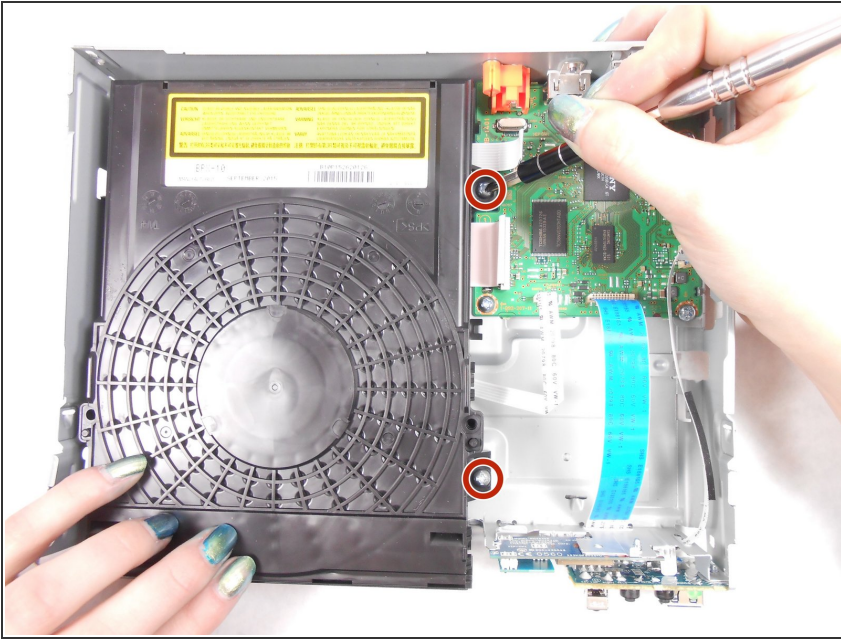
- Lift the tabs located on each side of the device to free the front cover. Begin to separate the front and metal back covers.

### Step 4



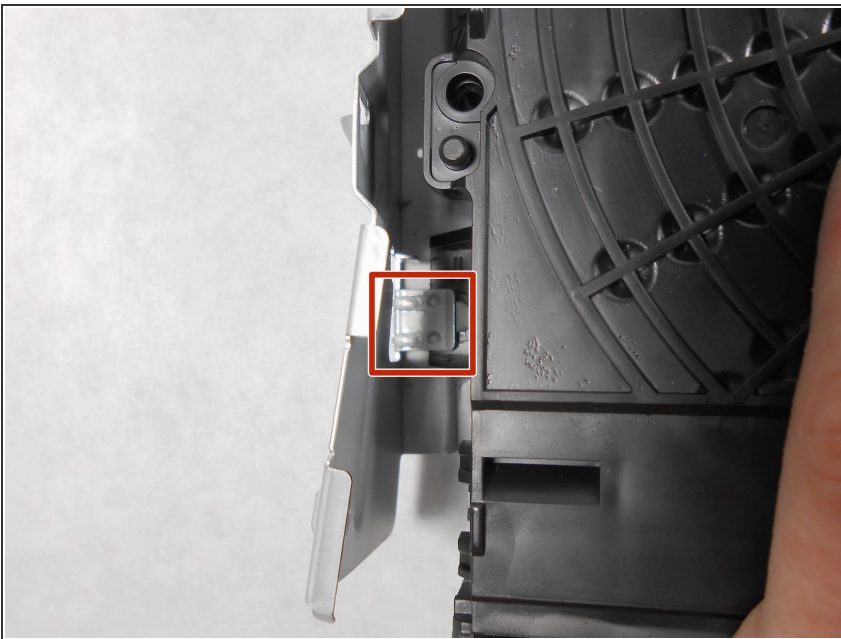
- Completely separate the front cover and the metal back cover from the grey casing.
- The inner components should all be completely exposed after opening.

## Step 5



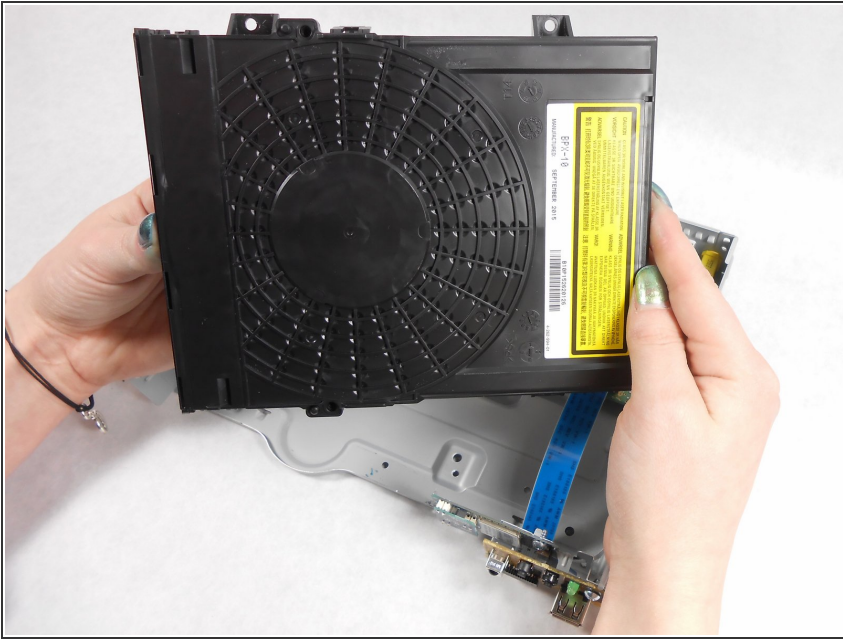
- Unscrew the two 8mm Philips head screws securing the disc assembly to the main casing.

## Step 6



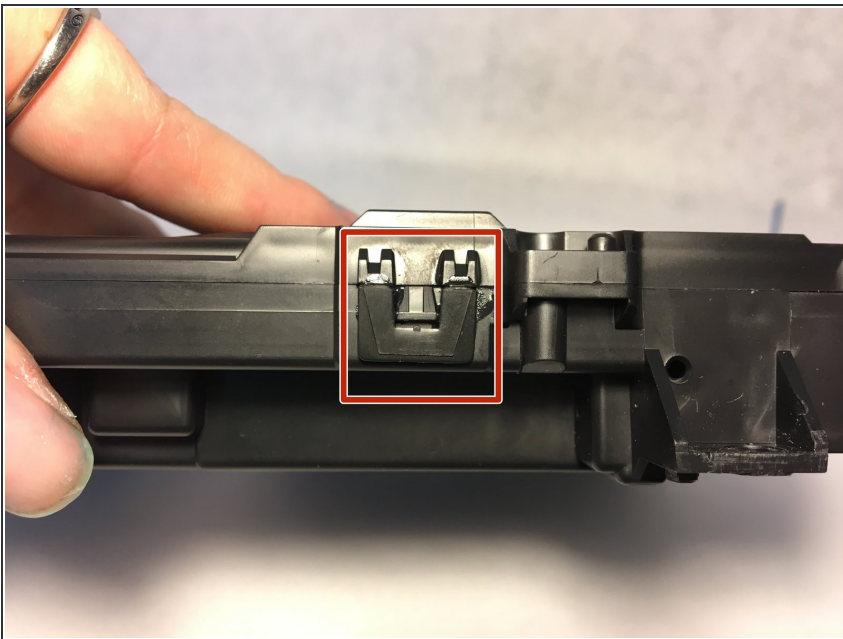
- Pull the disc assembly out from under the metal tabs on the main casing.

## Step 7



- Remove disc assembly.

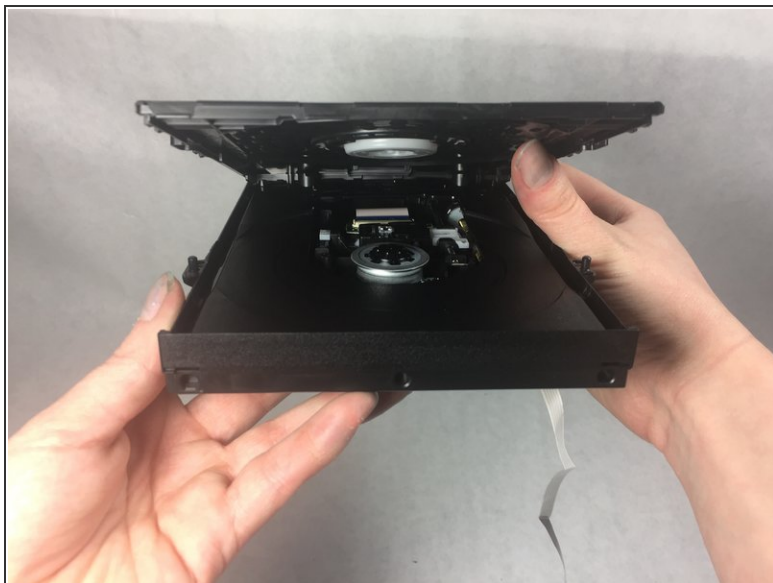
## Step 8 — Disc Tray



- ⚠ Take caution to not break plastic tabs.
- Undo the four tabs on the disc tray assembly.



## Step 9



- Lift front until back separates.

## Step 10



- Remove disc from disc tray.

To reassemble your device, follow these instructions in reverse order however do not put the disc back in.

