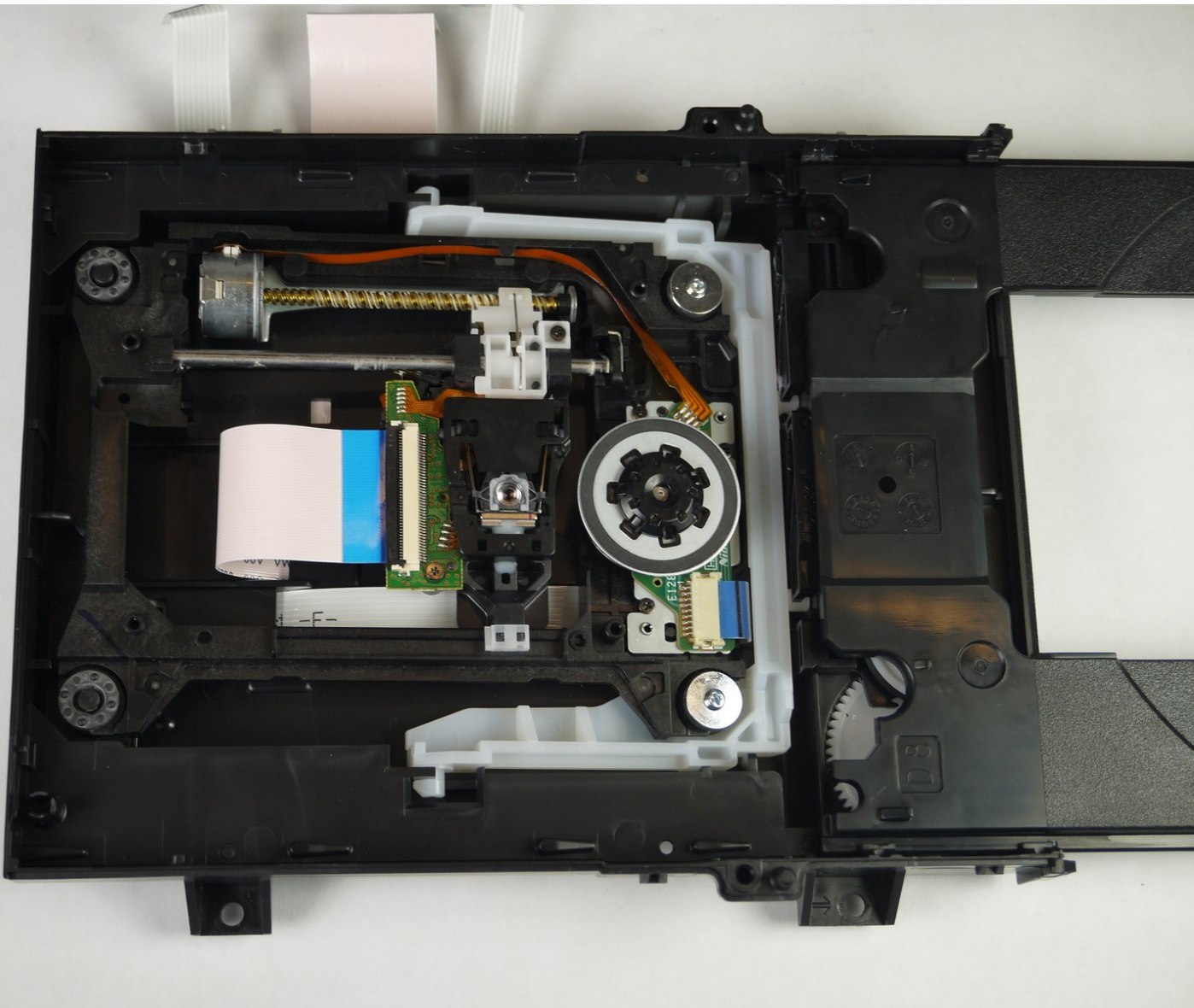




# Sony BDP-BX520 Disc Reader Replacement

In this guide you will open up the device and the disc tray to get to the disc reader.

Written By: Kyle Smit



---

## INTRODUCTION

These step-by-step instruction will allow you to replace the disc reader. This may be necessary if your player will not open or stops playing discs, however, before replacing refer to the [troubleshooting](#) page for other tips.



### TOOLS:

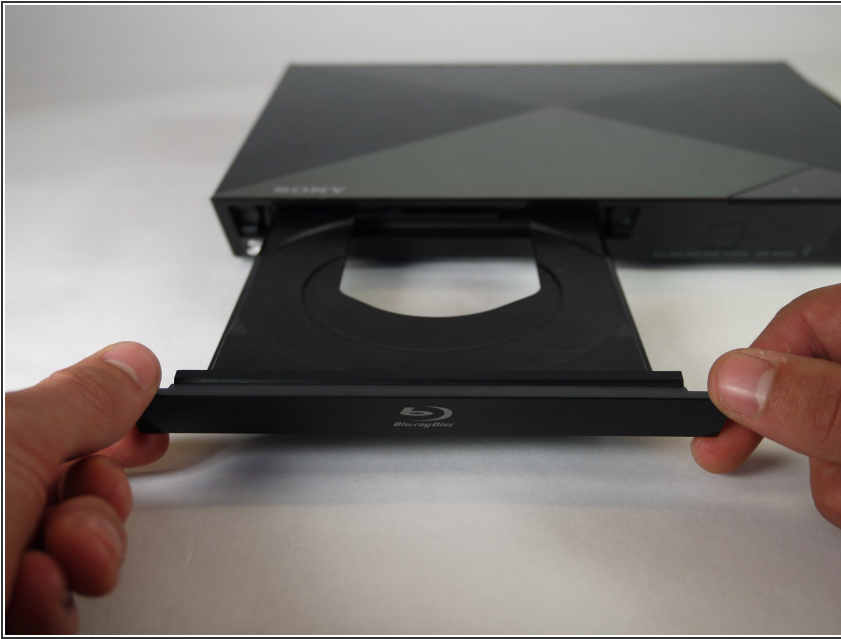
- [Phillips #2 Screwdriver](#) (1)
  - [Phillips #1 Screwdriver](#) (1)
  - [Tweezers](#) (1)
-

## Step 1 — Disc Tray Cover



- Plug in the Blu-Ray player, then press the power button, making sure the Blu-Ray player is powered on.
- Press the eject button on either the top of the Blu-Ray player or on the remote to open the disc tray.

## Step 2



- Grab the sides of the disc tray cover and carefully pull each side upwards, starting with the left side. This will unhook the cover from the tray.

## Step 3



- Close the disc tray, then power off and unplug the Blu-Ray player.

## Step 4 — Top Case



- Locate the three 8 mm screws on the back of the Blu-Ray player.
- Using the Phillips #2 screwdriver, unscrew each of the screws and set them aside.

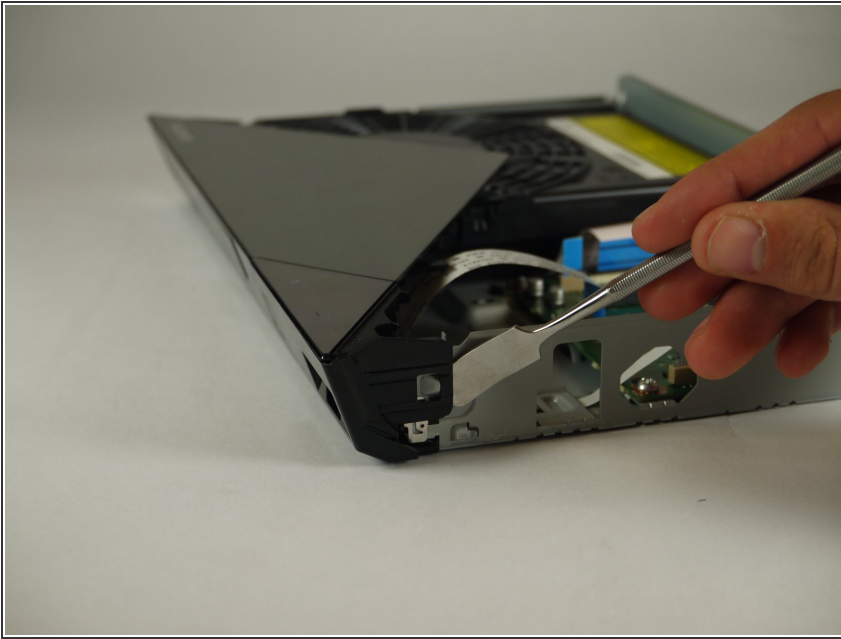
## Step 5



- Gently pull the top case back to remove it from the Blu-Ray player.

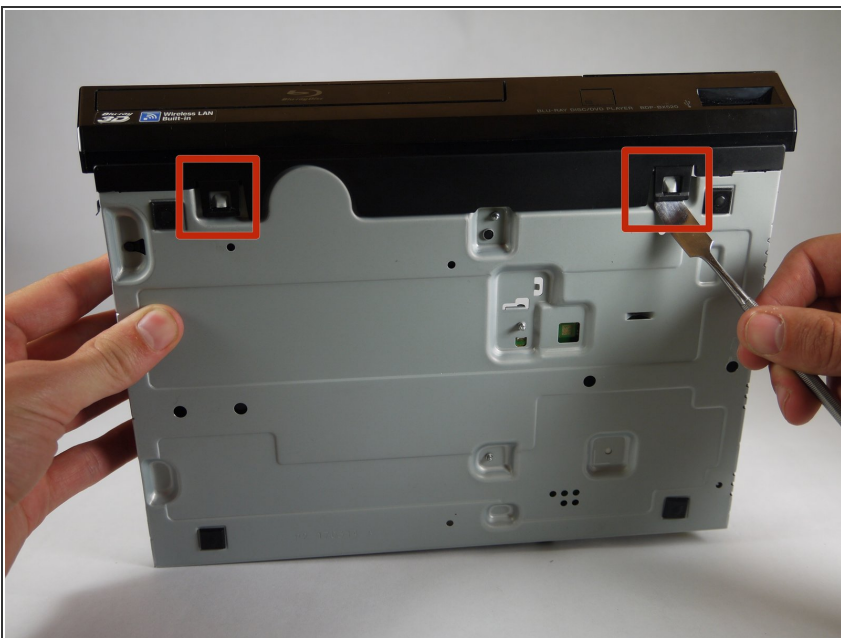


## Step 6 — Front Panel



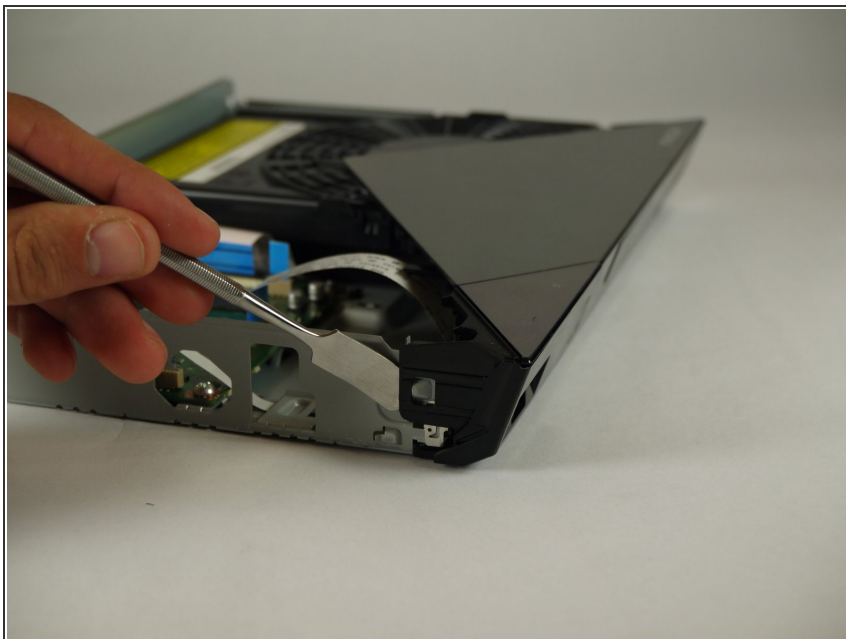
- Insert the nylon or metal spudger under the clip on the side near the front of the device. Lift the clip so it is free from the device.
- ⓘ Lifting these clips may require you to hold one clip open while you move on to the next clip.

## Step 7



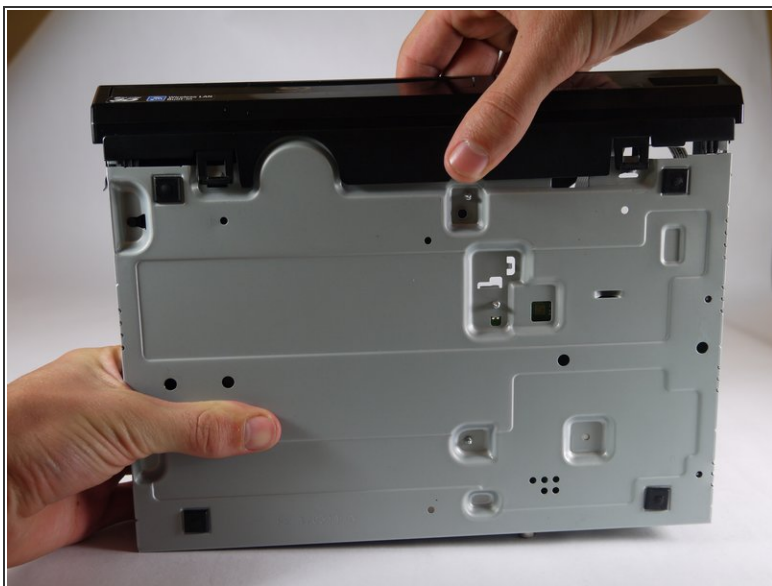
- Flip device over so the bottom faces you.
- Insert the nylon or metal spudger and lift the two clips on the bottom of the device.

## Step 8



- Lift the clip on the opposite side of the device with the nylon or metal spudger.

## Step 9



- Grasp the front case firmly and lift from the rest of the device.

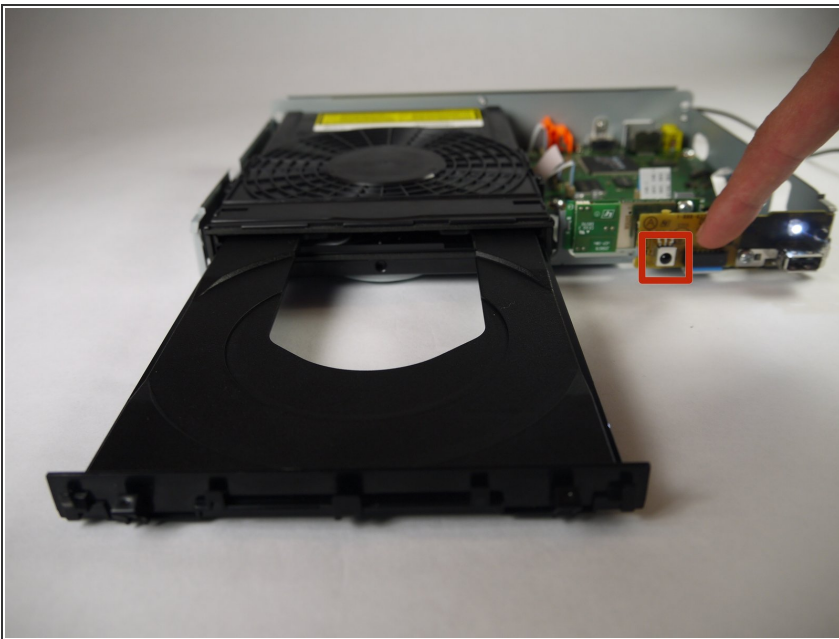
 Lifting may require some force.

## Step 10 — Disc Reader



- ⚠ Do not touch the circuit boards or the internal parts of the device while it is powered on. This could short out the circuits and possibly cause you harm.
- Plug in the device and power it on by pushing the **right** button on the front of the device. The light should turn on.

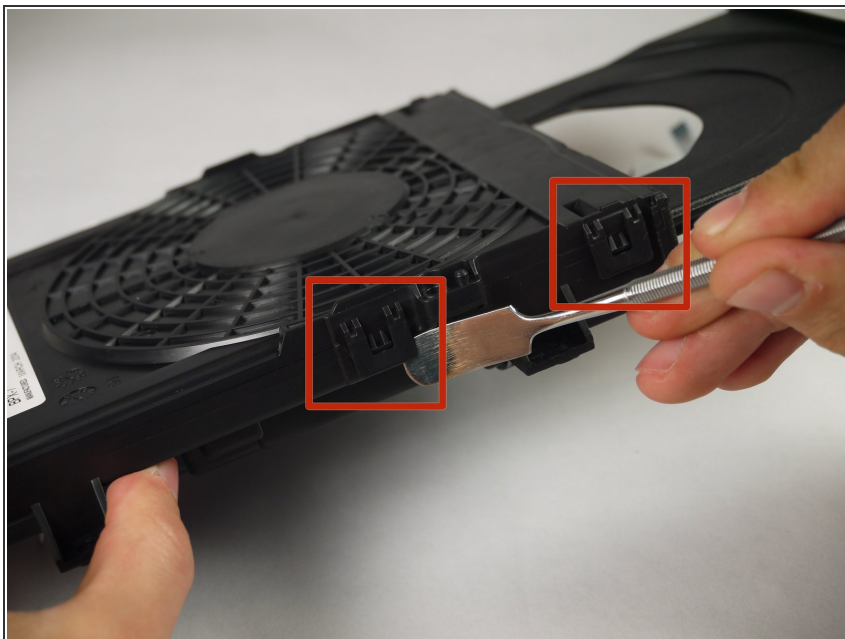
## Step 11



- Eject the disc tray by pushing the **left** button on the front of the device.
- ☑ Unplug the device once the disc tray is open.

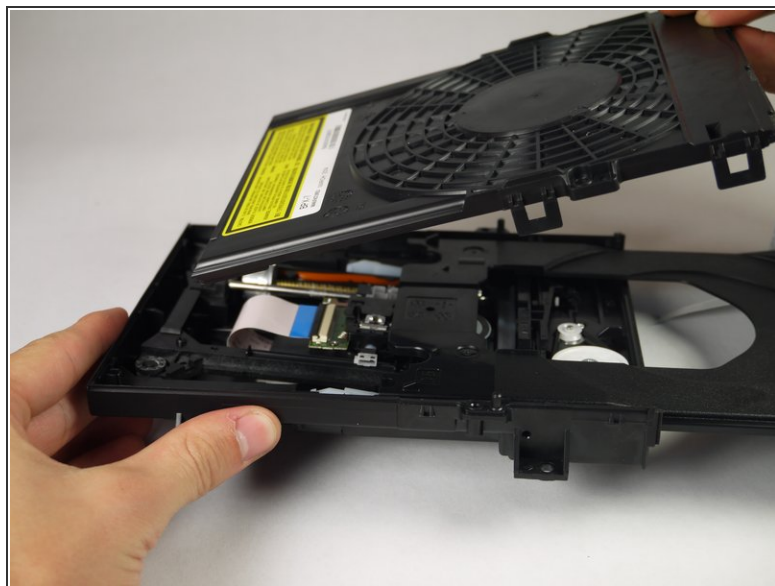
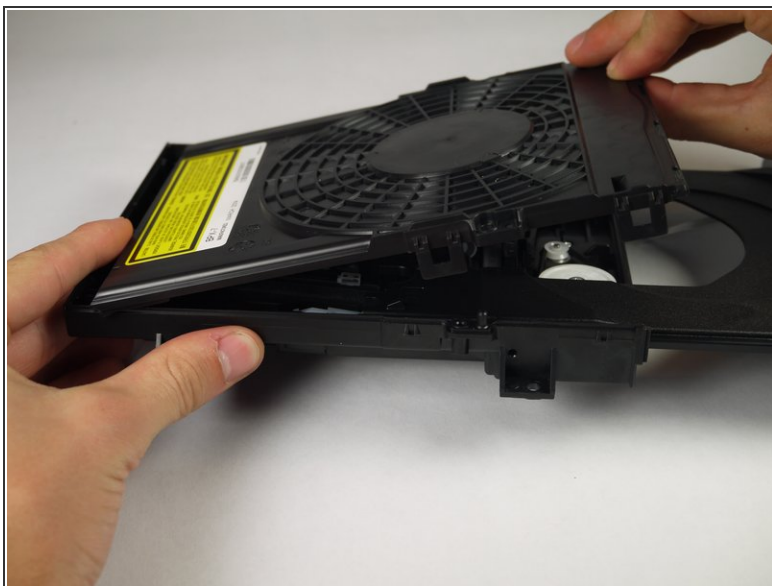


## Step 12



- Insert the nylon or metal spudger under the clip and lift it up. There are 4 clips that need to be lifted, two on each side

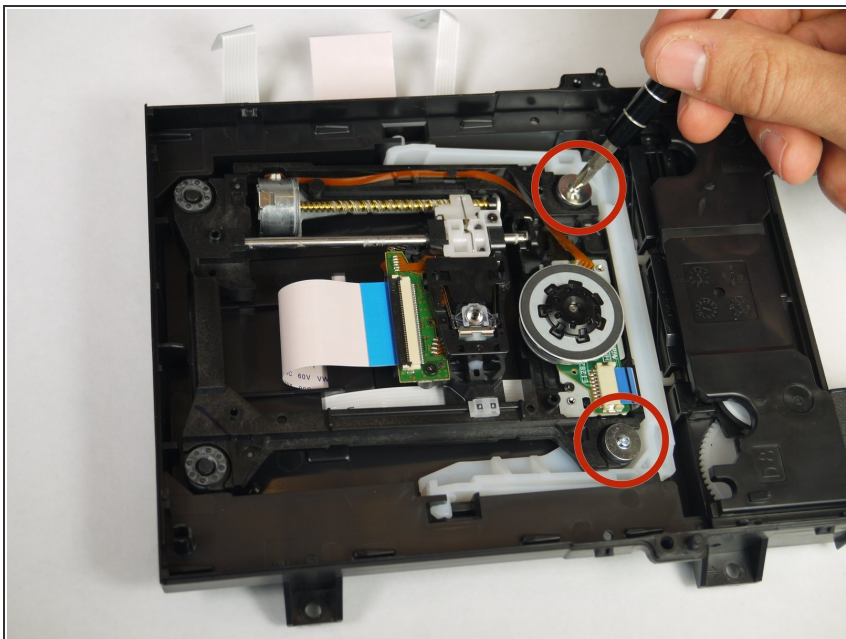
## Step 13



- Once the clips are free, lift the top cover of the disc tray up.

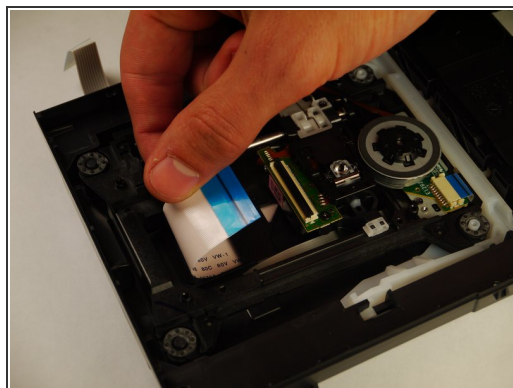
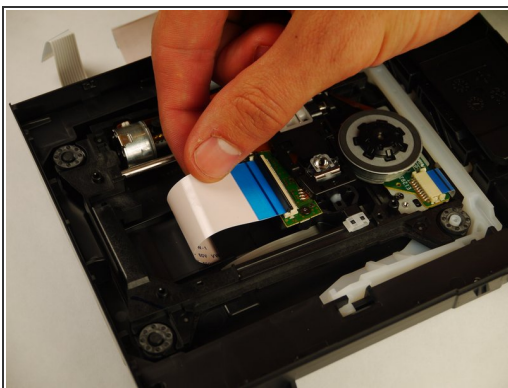
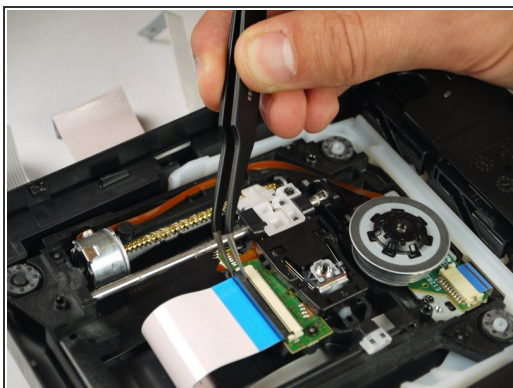
 This should take minimal force.

## Step 14



- Unscrew the two silver 8mm Phillips screws from the disc reader.

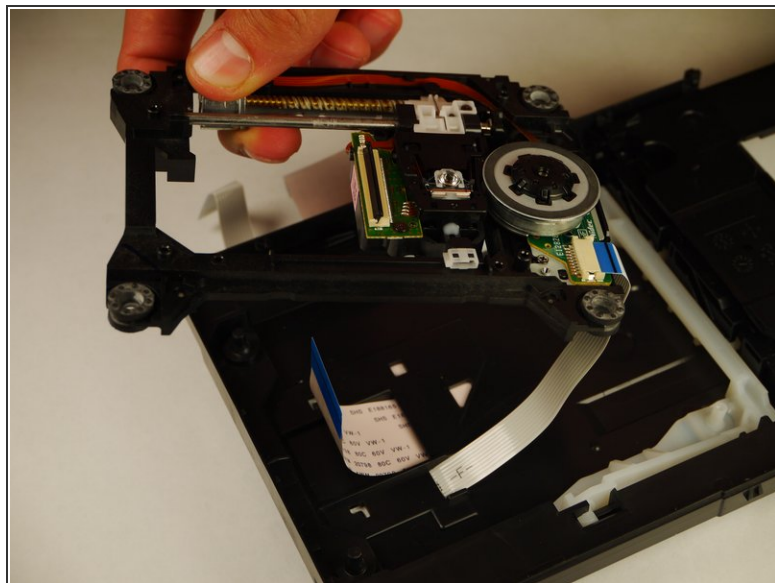
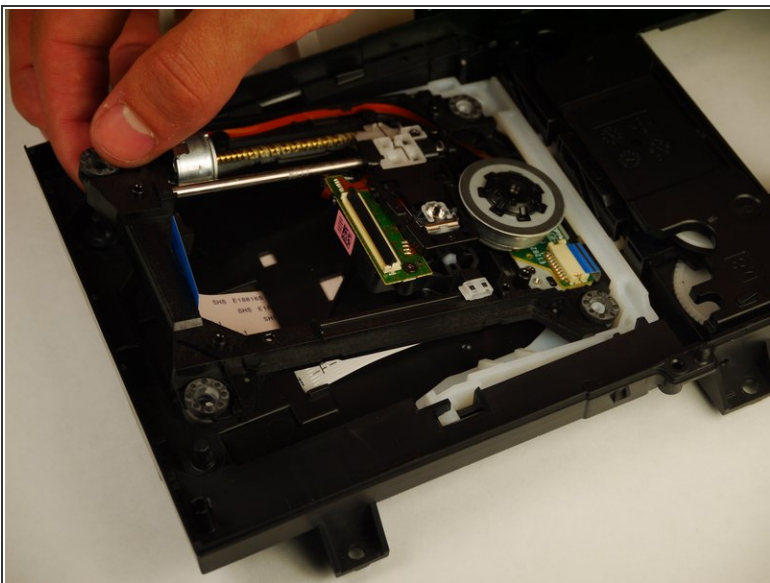
## Step 15



- Use the tweezers to lift both sides of the black clip holding the white 14 pin ribbon in place.
- Once free the white 24 pin ribbon should slip right out.

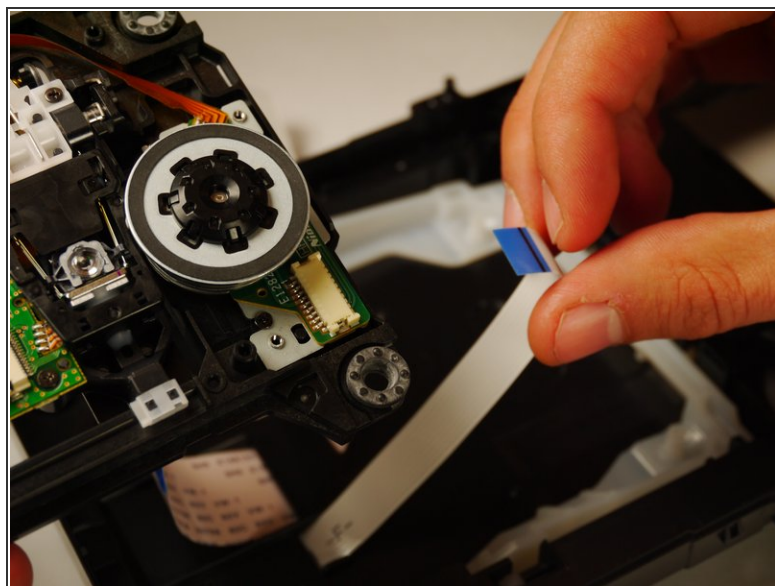
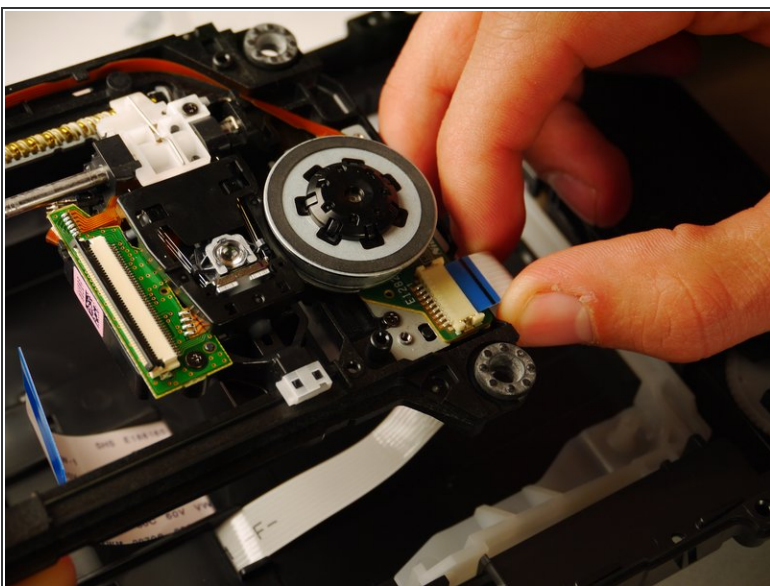


## Step 16



⚠ Carefully lift up the disc reader. It is still attached by a cable underneath!

## Step 17



- Gently pull out the white 13 pin cable from the disc reader.

To reassemble your device, follow these instructions in reverse order.