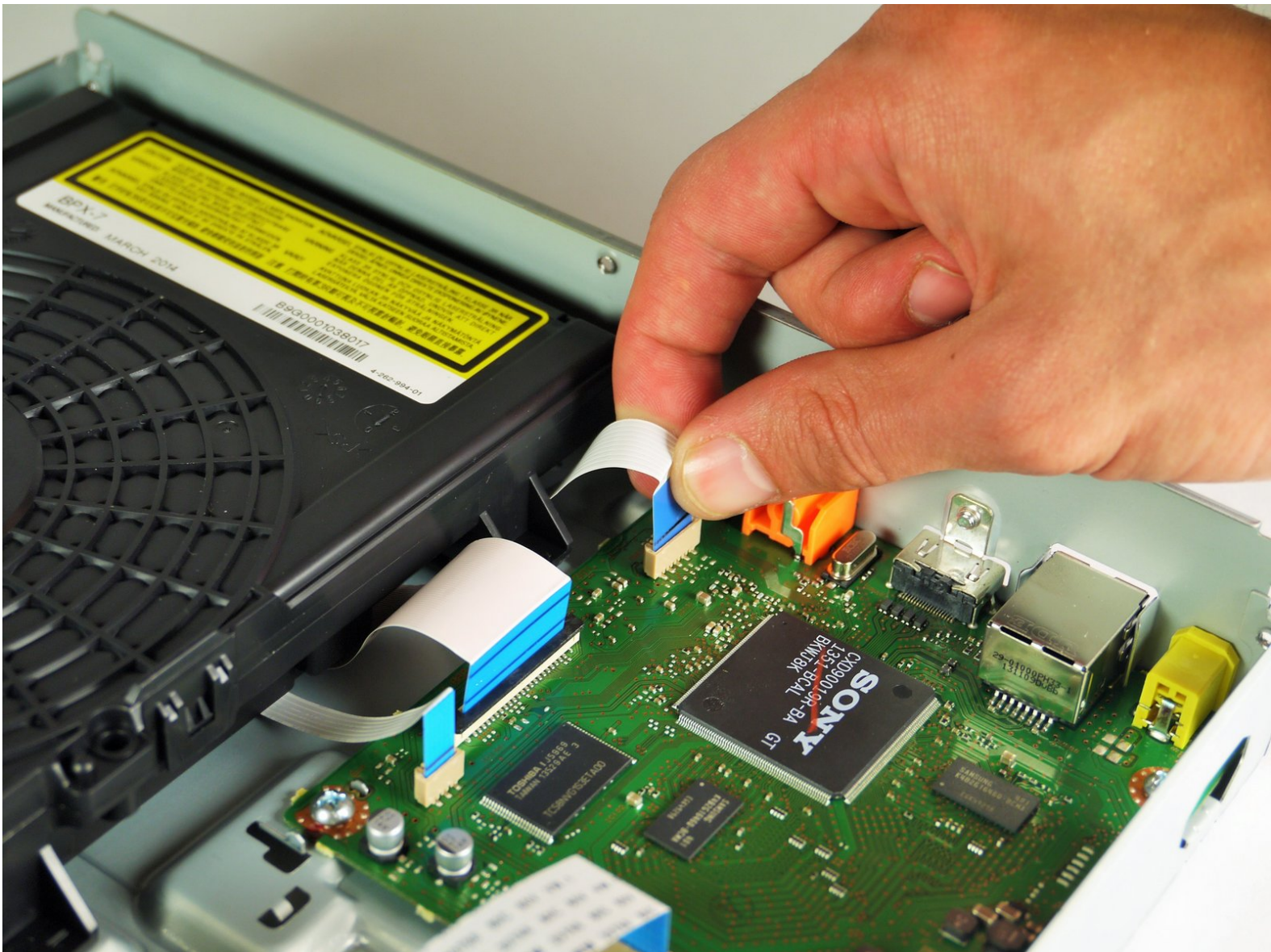




# Sony BDP-BX520 Motherboard Replacement

In this guide, you will be replacing the Blu Ray Player's motherboard.

Written By: Carley Thomas



---

## INTRODUCTION

The motherboard is the brains of a Blu Ray Player. If it gets damaged, you will have to replace it. This is also how you would start to replace any of the ports on the back of the device, as they connect to the motherboard.

---

### TOOLS:

- [Metal Spudger Set](#) (1)
  - [Phillips #2 Screwdriver](#) (1)
  - [Tweezers](#) (1)
-

## Step 1 — Disc Tray Cover



- Plug in the Blu-Ray player, then press the power button, making sure the Blu-Ray player is powered on.
- Press the eject button on either the top of the Blu-Ray player or on the remote to open the disc tray.

## Step 2



- Grab the sides of the disc tray cover and carefully pull each side upwards, starting with the left side. This will unhook the cover from the tray.

## Step 3



- Close the disc tray, then power off and unplug the Blu-Ray player.



## Step 4 — Top Case



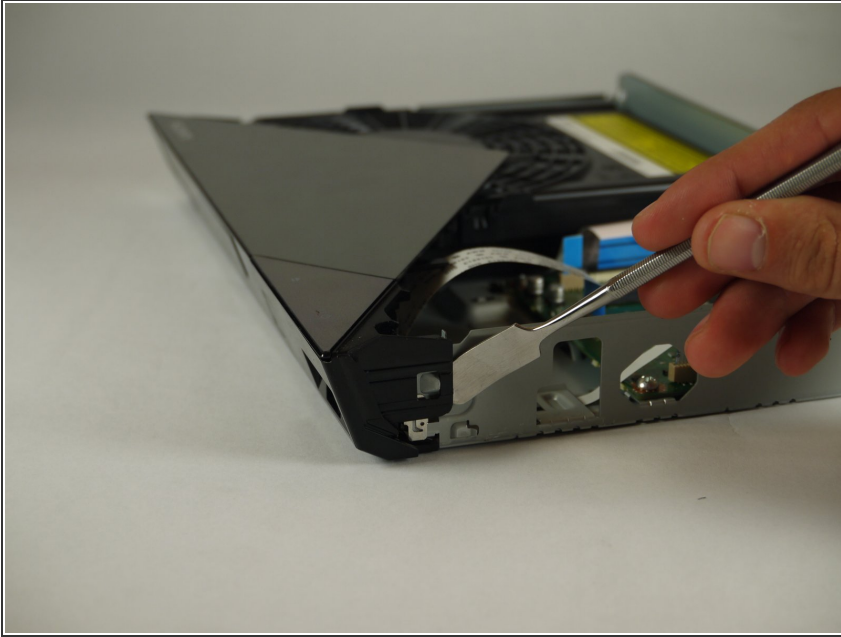
- Locate the three 8 mm screws on the back of the Blu-Ray player.
- Using the Phillips #2 screwdriver, unscrew each of the screws and set them aside.

## Step 5



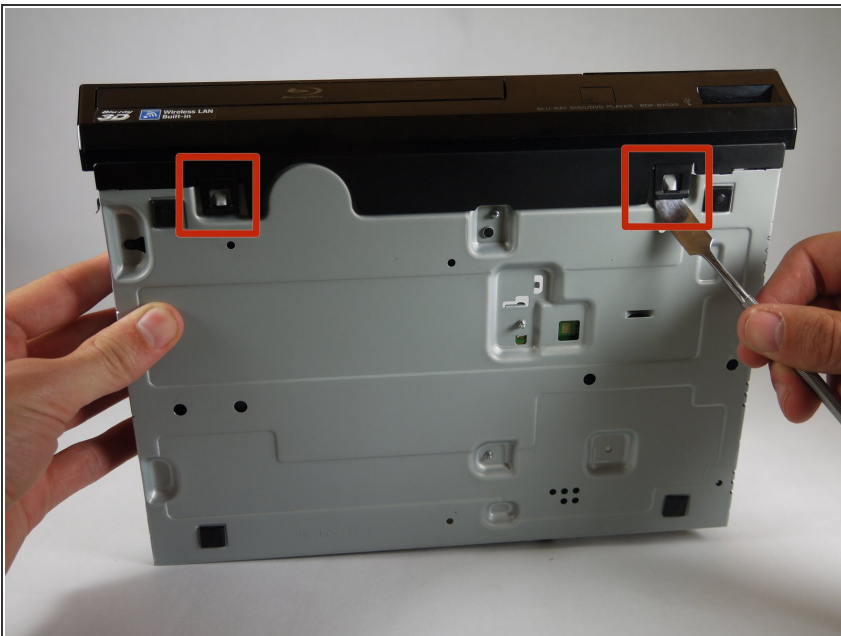
- Gently pull the top case back to remove it from the Blu-Ray player.

## Step 6 — Front Panel



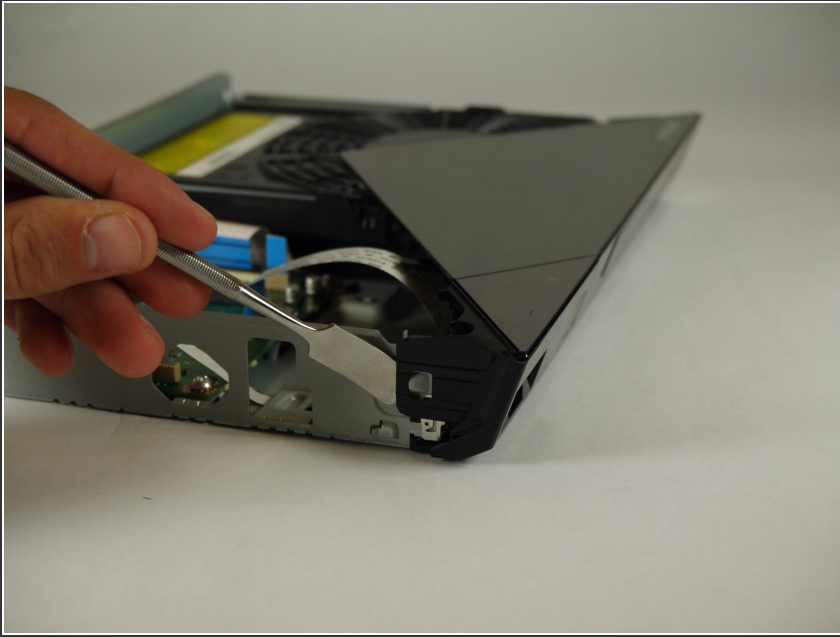
- Insert the nylon or metal spudger under the clip on the side near the front of the device. Lift the clip so it is free from the device.
- ⓘ Lifting these clips may require you to hold one clip open while you move on to the next clip.

## Step 7



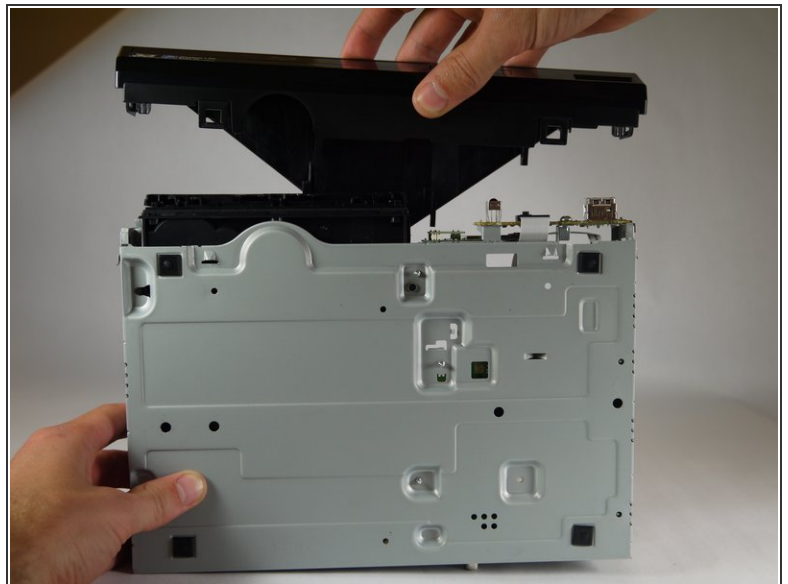
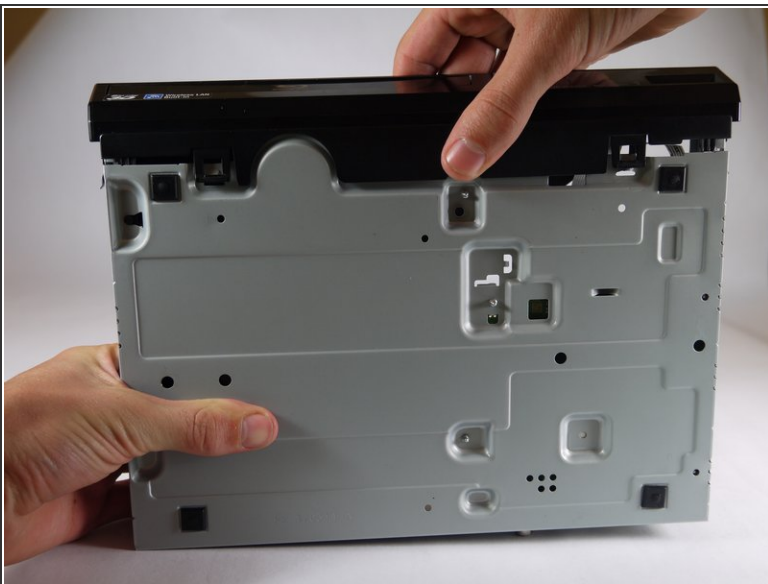
- Flip device over so the bottom faces you.
- Insert the nylon or metal spudger and lift the two clips on the bottom of the device.

## Step 8



- Lift the clip on the opposite side of the device with the nylon or metal spudger.

## Step 9

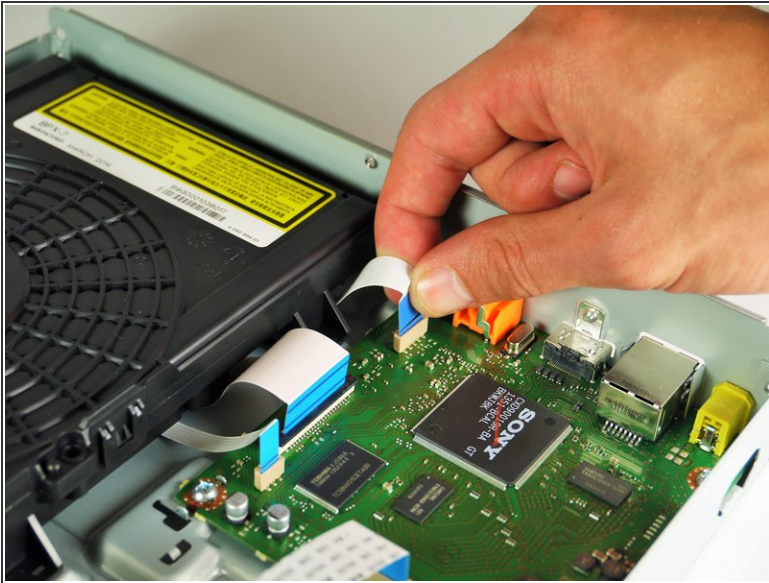


- Grasp the front case firmly and lift from the rest of the device.

 Lifting may require some force.

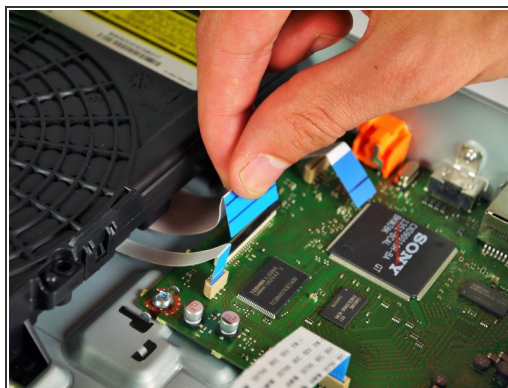
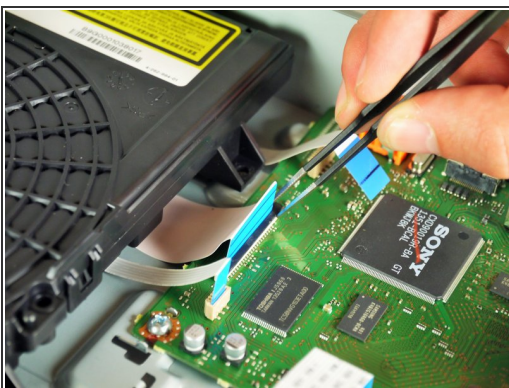


## Step 10 — Motherboard



- Remove the medium ribbon cable connecting the disc drive to the motherboard by lifting it out of its slot with your fingers.
- ⓘ It might take some force to lift the ribbon out, so be careful as to not damage the ribbon or the board.

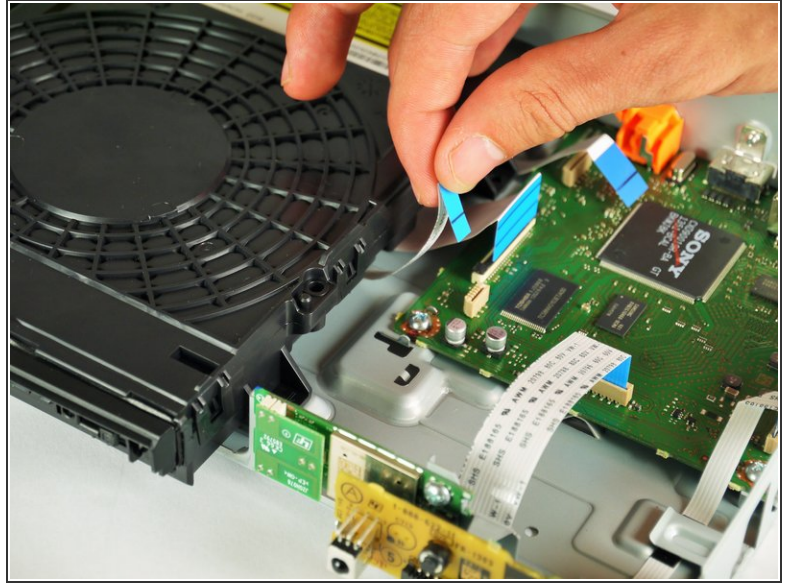
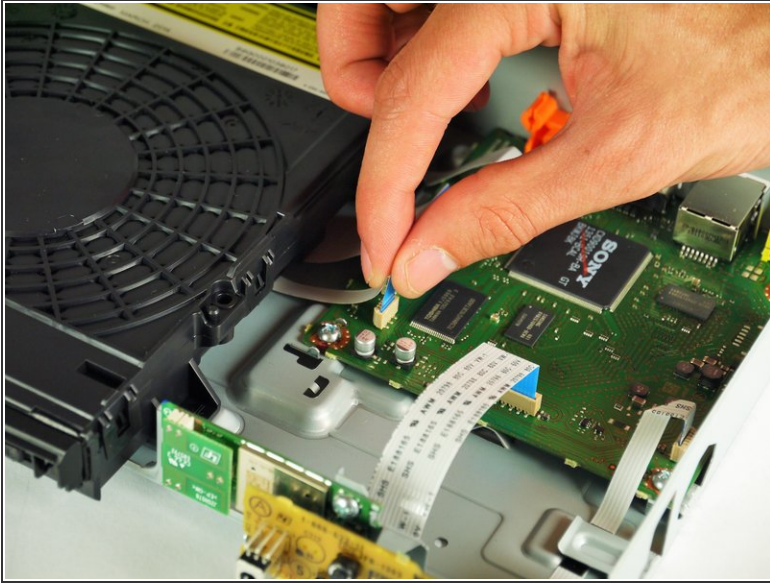
## Step 11



- With the tweezers, remove the large ribbon cable by grabbing the black part of the connector and gently lifting up on each side.
- Grab the ribbon with your hand and lift it out of the connector.

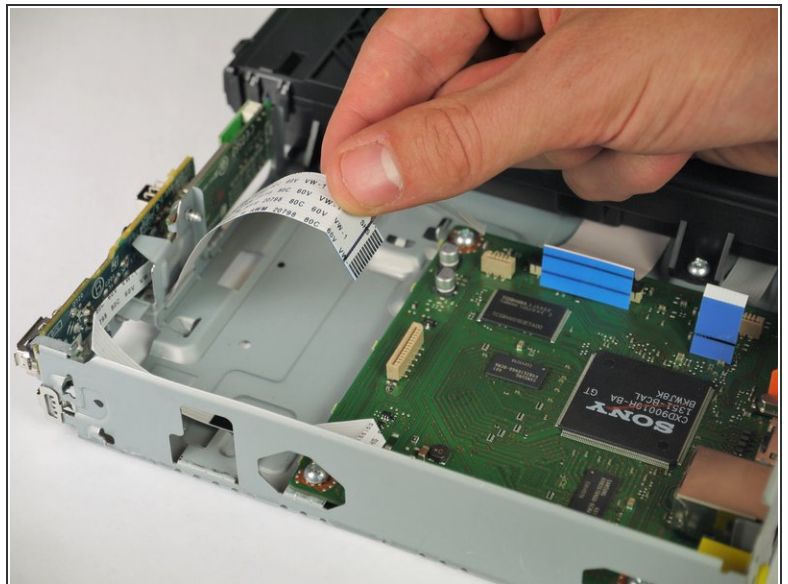
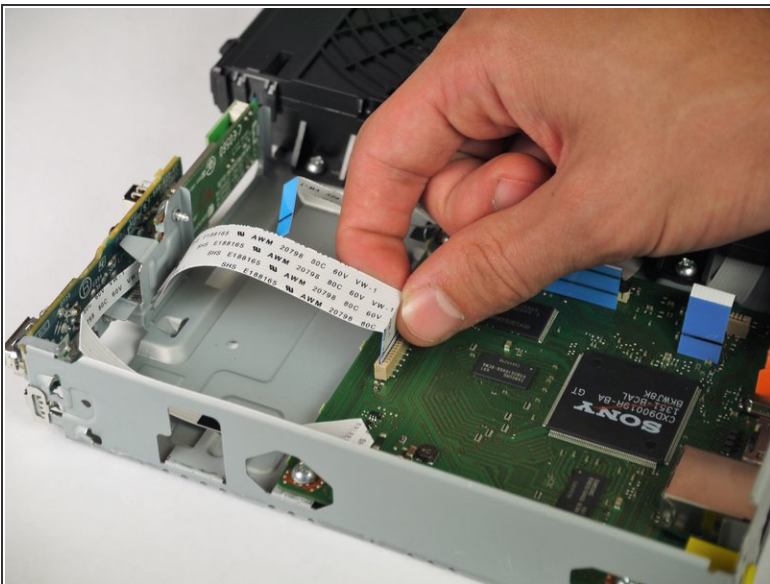


## Step 12



- Grab the small ribbon cable and pull up to disconnect.
- ⓘ Like the medium ribbon cable, removing the small cable may require some force, so be careful as to not damage the cable or the motherboard.

## Step 13



- Remove the large, white ribbon cable connecting the motherboard to the port board (the larger of the two on the side nearest the front of the player) by lifting it out of its connector.

## Step 14



- Lift up the white ribbon cable connecting the Bluetooth board to the motherboard (the smaller of the two on the front side of the motherboard) to remove it.

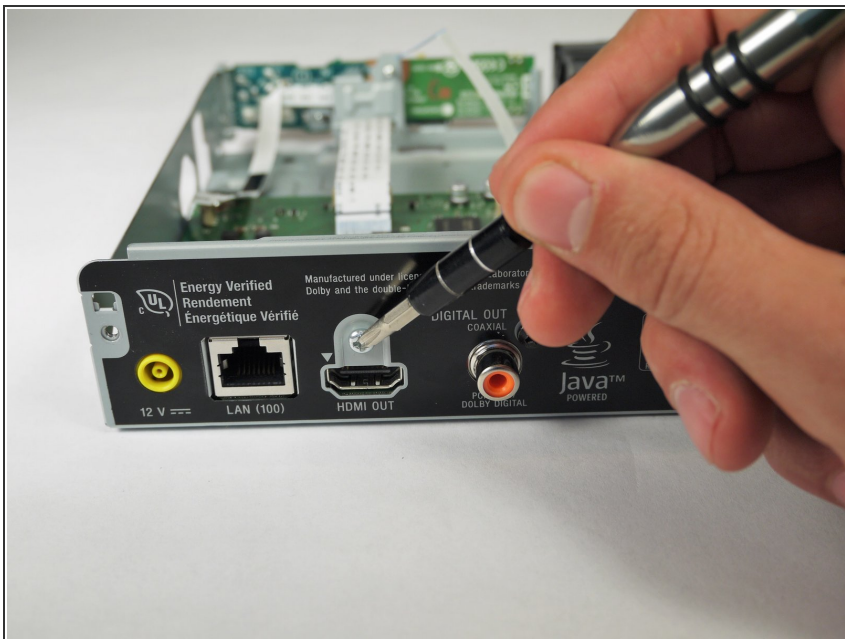
## Step 15



- Remove the black, 1 cm screw to the upper right of the coaxial port using a PH2 screwdriver bit.

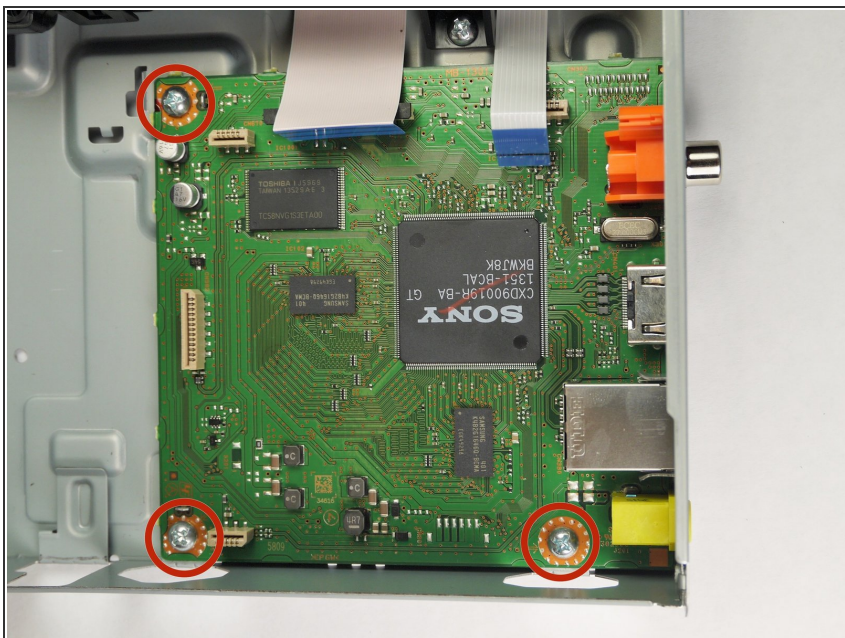


## Step 16



- Remove the silver, 5 mm screw above the HDMI port with a PH2 screwdriver bit.

## Step 17



- Remove the three screws holding the motherboard in the case.



## Step 18



⚠ Hold the motherboard exclusively by its sides as to not short it out or damage it irreparably.

- Slide the motherboard towards the front while lifting to remove.

To reassemble your device, follow these instructions in reverse order.