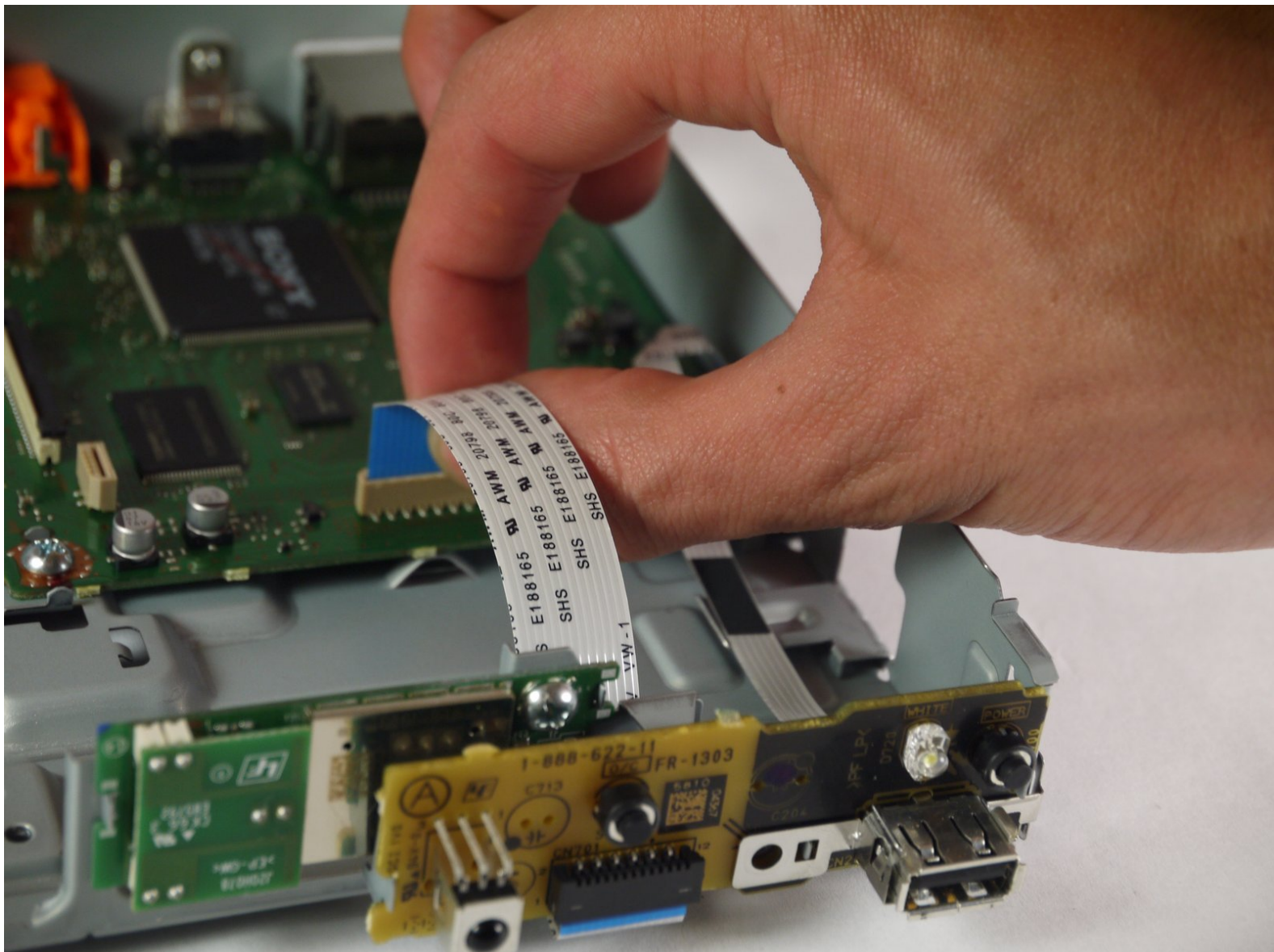




Sony BDP-BX520 Port Board Replacement

This guide will show you how to replace the board that houses the power and eject buttons, the infrared sensor for the remote, and a USB port. The port board can be found in the front of the Blu-Ray player.

Written By: Collier



INTRODUCTION

This guide requires only simple tools, like a screwdriver and metal spudger. Be careful when handling circuit boards to ensure the device does not become further damaged.

TOOLS:

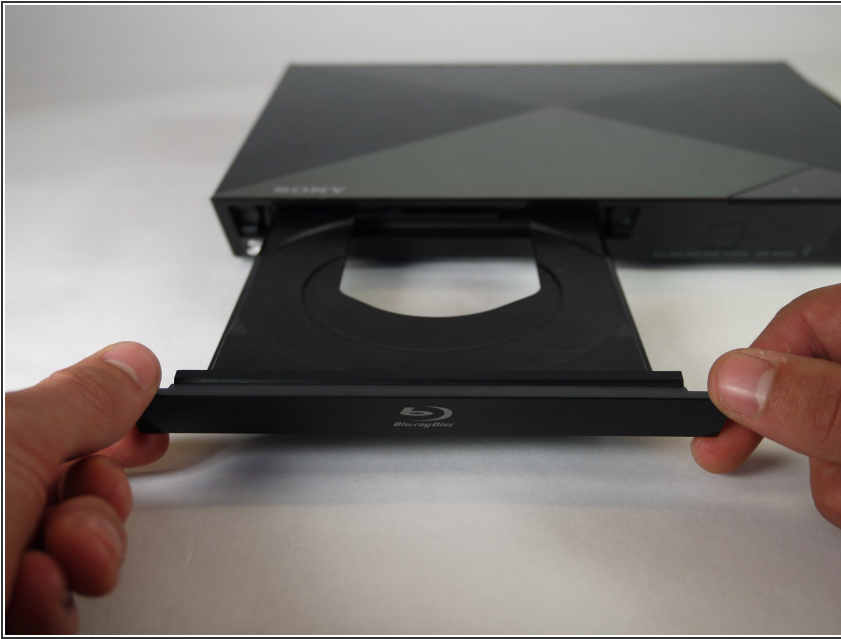
- [Phillips #2 Screwdriver](#) (1)
 - [Metal Spudger Set](#) (1)
 - [Spudger](#) (1)
-

Step 1 — Disc Tray Cover



- Plug in the Blu-Ray player, then press the power button, making sure the Blu-Ray player is powered on.
- Press the eject button on either the top of the Blu-Ray player or on the remote to open the disc tray.

Step 2



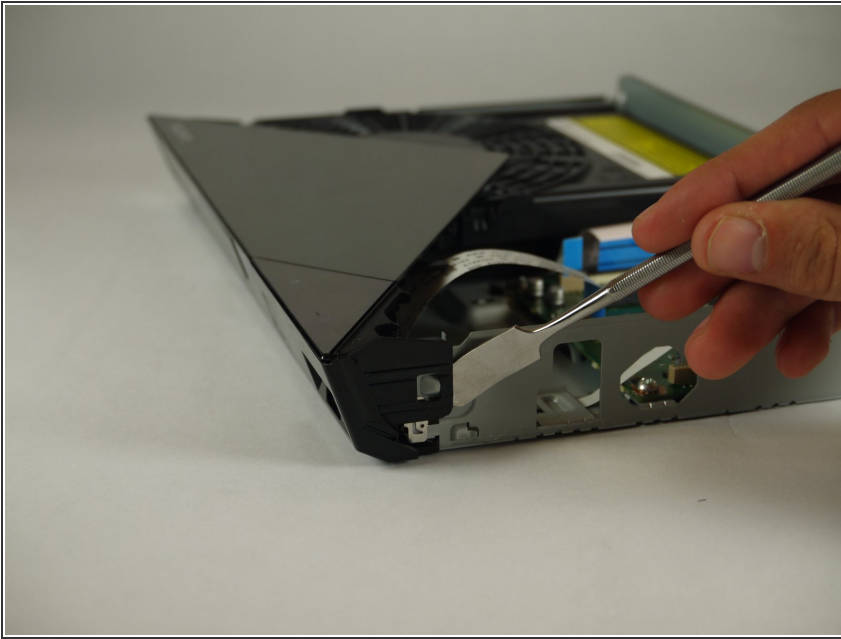
- Grab the sides of the disc tray cover and carefully pull each side upwards, starting with the left side. This will unhook the cover from the tray.

Step 3



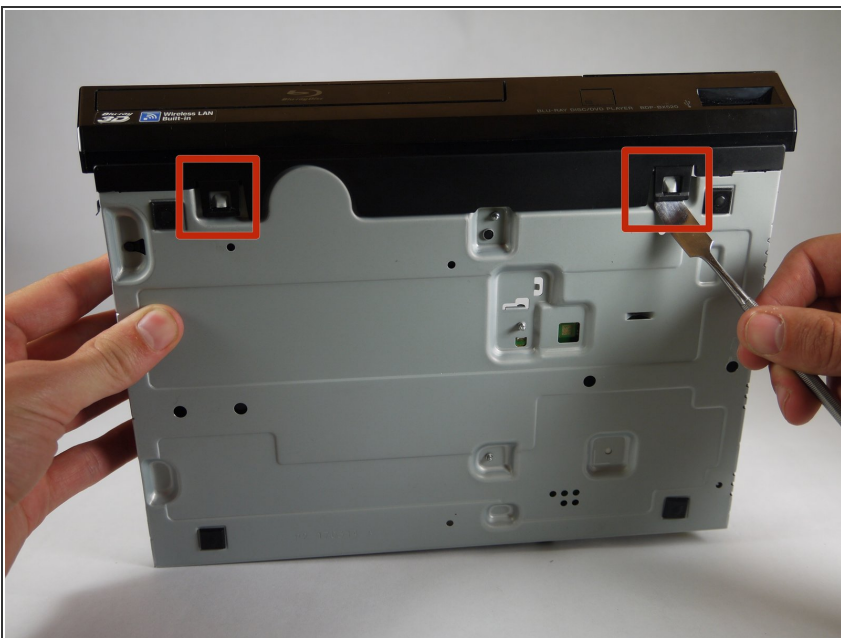
- Close the disc tray, then power off and unplug the Blu-Ray player.

Step 4 — Front Panel



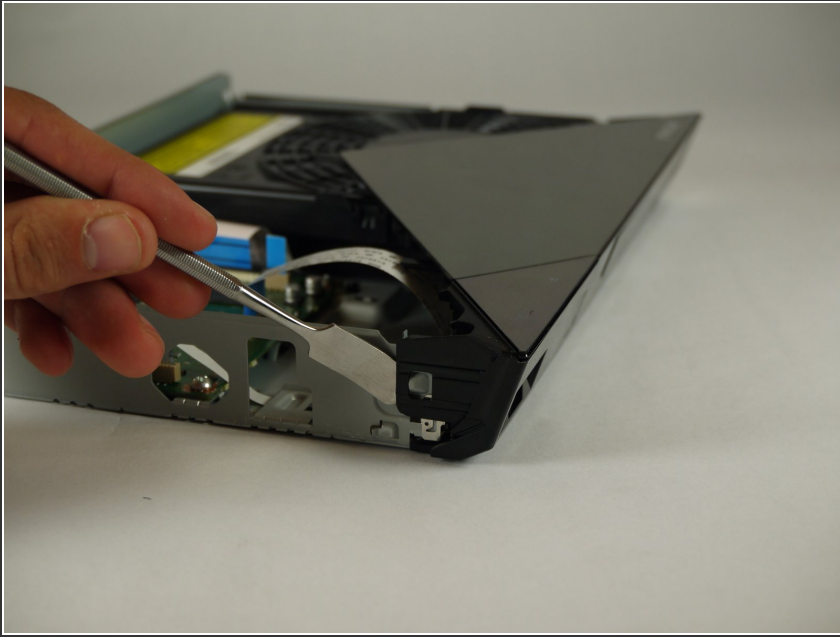
- Insert the nylon or metal spudger under the clip on the side near the front of the device. Lift the clip so it is free from the device.
- ⓘ Lifting these clips may require you to hold one clip open while you move on to the next clip.

Step 5



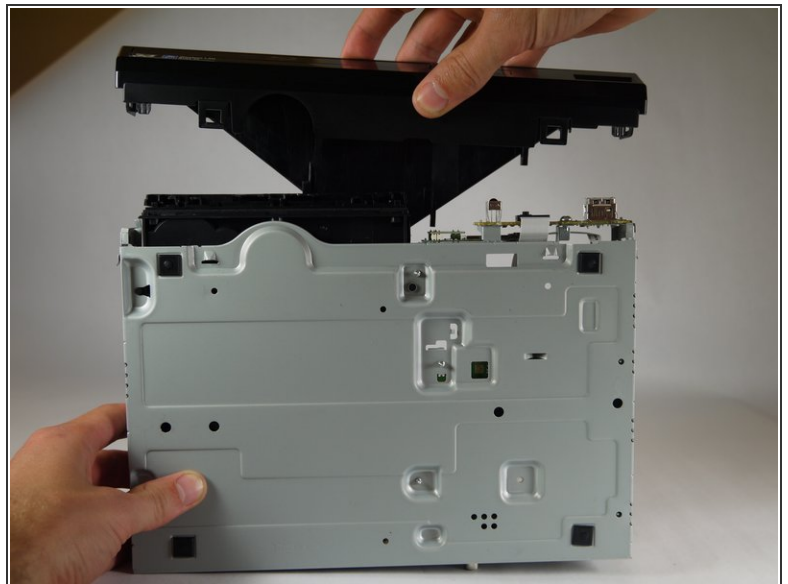
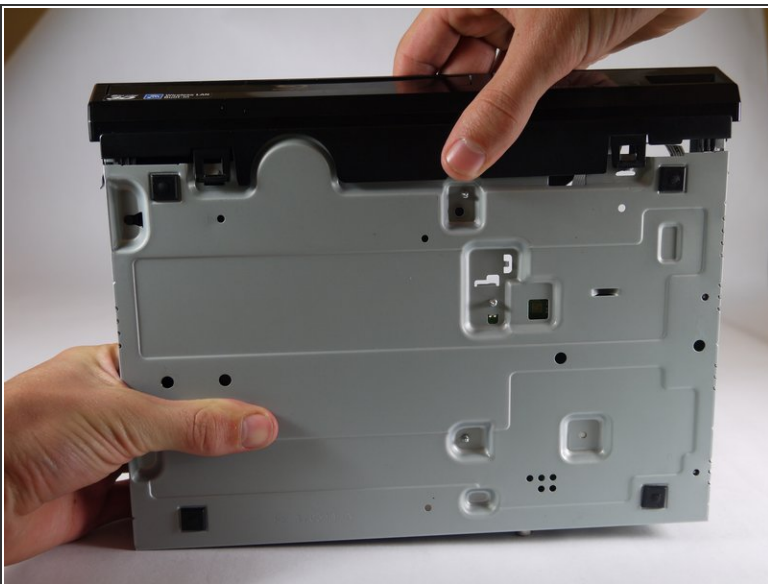
- Flip device over so the bottom faces you.
- Insert the nylon or metal spudger and lift the two clips on the bottom of the device.

Step 6



- Lift the clip on the opposite side of the device with the nylon or metal spudger.

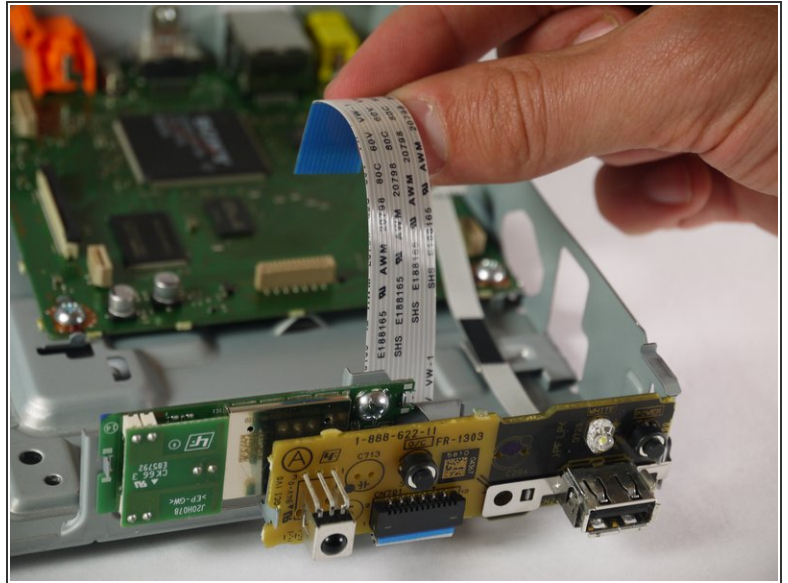
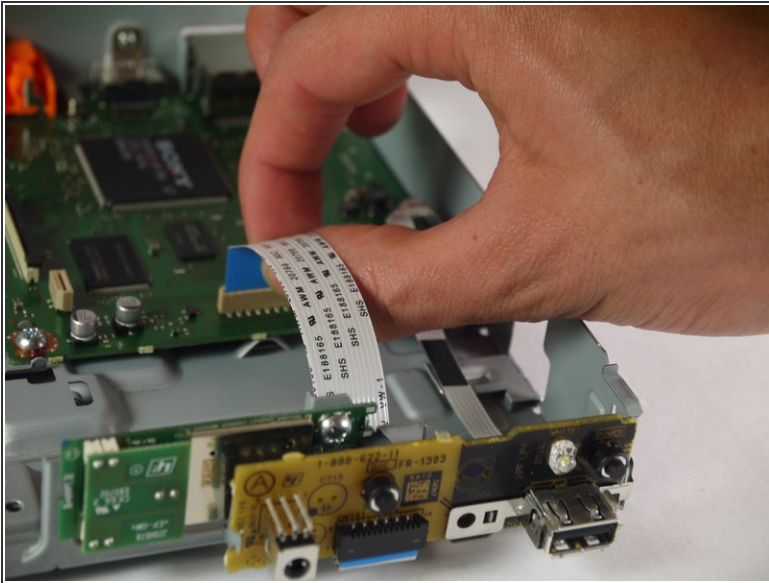
Step 7




- Grasp the front case firmly and lift from the rest of the device.

 Lifting may require some force.

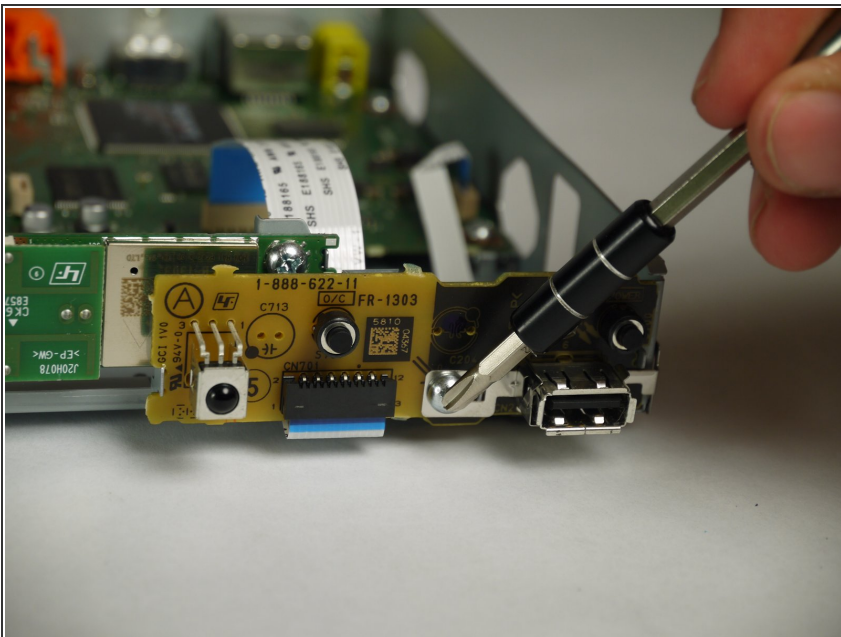
Step 8 — Port Board



 When handling circuit boards like the motherboard and port board, make sure to only touch them on the sides.

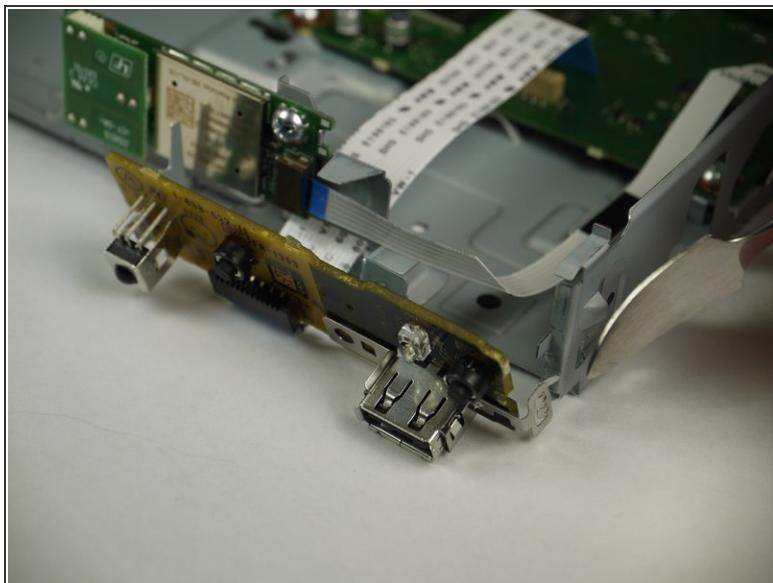
- Locate the large ribbon cable connecting the port board to the motherboard.
- Detach the cable from the motherboard by carefully pulling upward on the cable.

Step 9



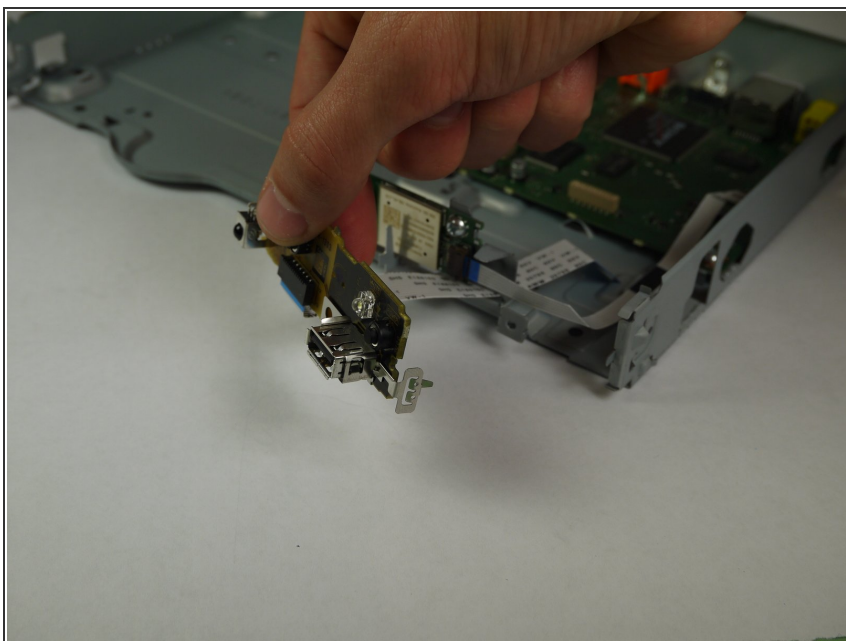
- Using the Phillips #2 screwdriver, unscrew the silver, 8mm screw holding the board in place.

Step 10



- Using the nylon or metal spudger, carefully unclip the port board from the side of the player.

Step 11



- Carefully pull the port board free from the Blu-Ray player.

To reassemble your device, follow these instructions in reverse order.