



Sony BDP-BX620 Bluetooth Module Replacement

Removing the Bluetooth module.

Written By: Zachery Zavala



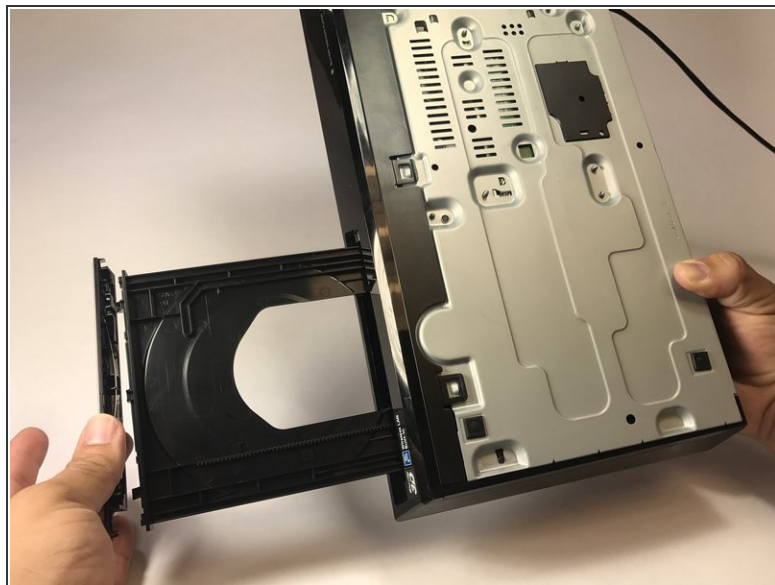
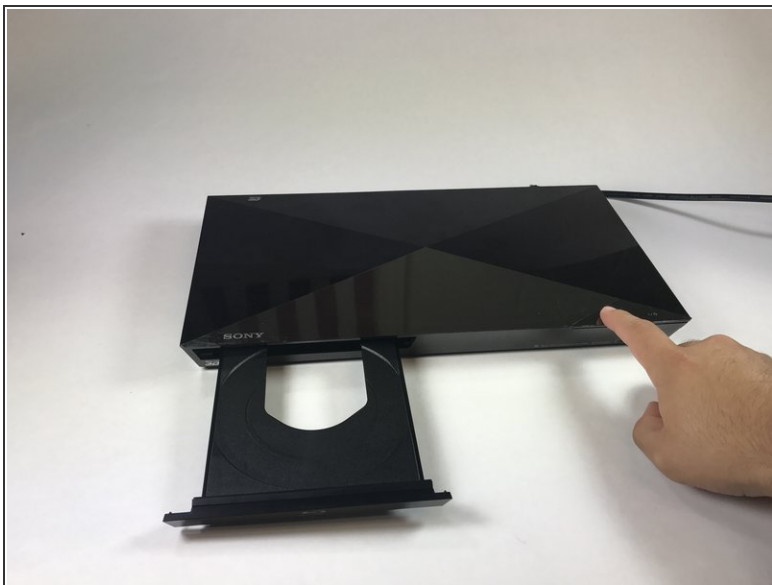
INTRODUCTION

This guide will show you how to remove the Bluetooth module which controls the Bluetooth functions of the device.

TOOLS:

- [Phillips #0 Screwdriver](#) (1)
 - [Tweezers](#) (1)
-

Step 1 — Outer Cover



- Power on the device, eject the disk tray, and power off the device.
- Turn the device over.
- Lightly apply downward pressure on the black covering on the disk tray until it snaps off.

⚠ Caution, applying too much pressure can break the black covering.


Step 2



- Turn the device around.
 - Using a Phillips screw driver, remove the screws on both ends of the device circled red in the image.
 - Slide the side covers on either side towards the back of the device.
- i** There is a back cover on either side of the device.

Step 3



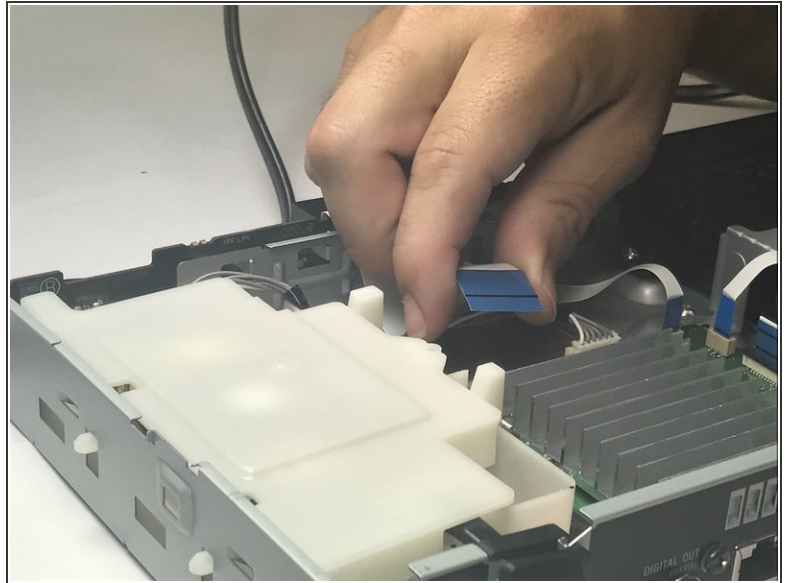
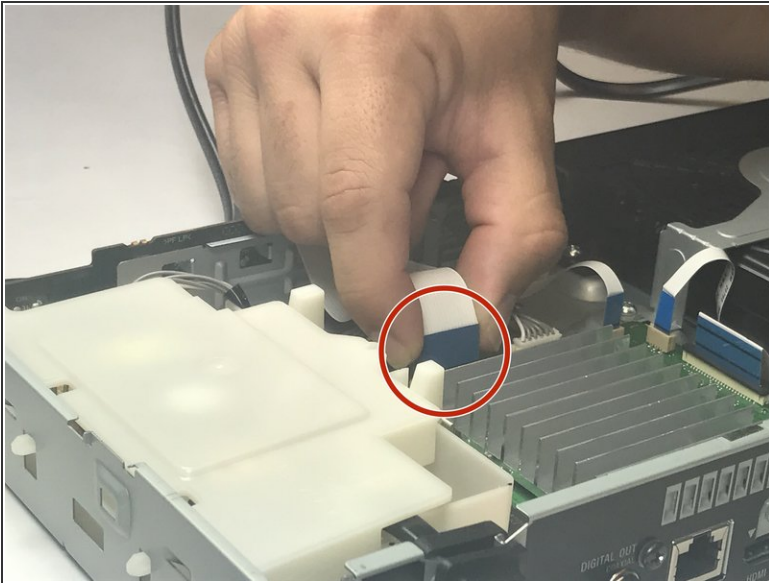
 This step might require someone to help unclasp the plastic clips.

- Turn the device so that the bottom is facing up.
- In the bottom, unclip the three plastic clips circled in red.
- On either side, unclip the plastic clip circled in red
- Slide the black covering forwards to remove.

 All five clips have to be unclaspd for the covering to be removed.

 Careful not to break the plastic clips when putting it back on.

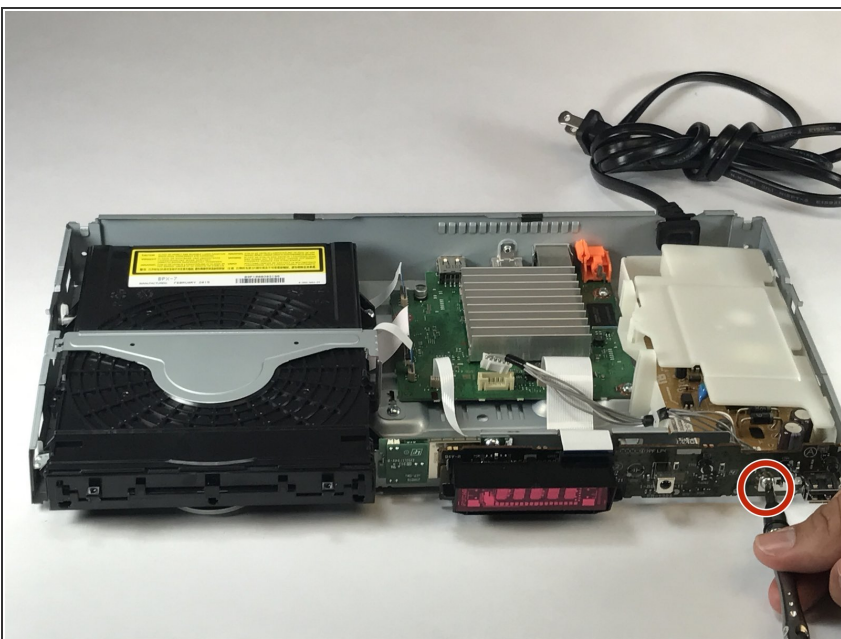
Step 4 — Port Board



- Now, spot the large ribbon cable that connects between the motherboard and the port board.
- Remove the cable by pulling upwards.

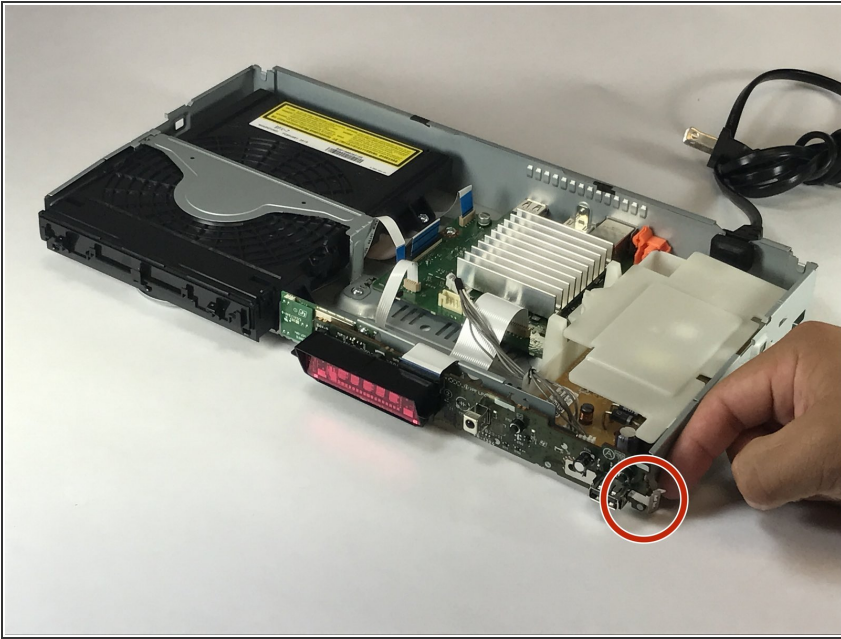
⚠ Be careful when pulling upwards on the ribbon cable. Too much force can cause it to rip.

Step 5



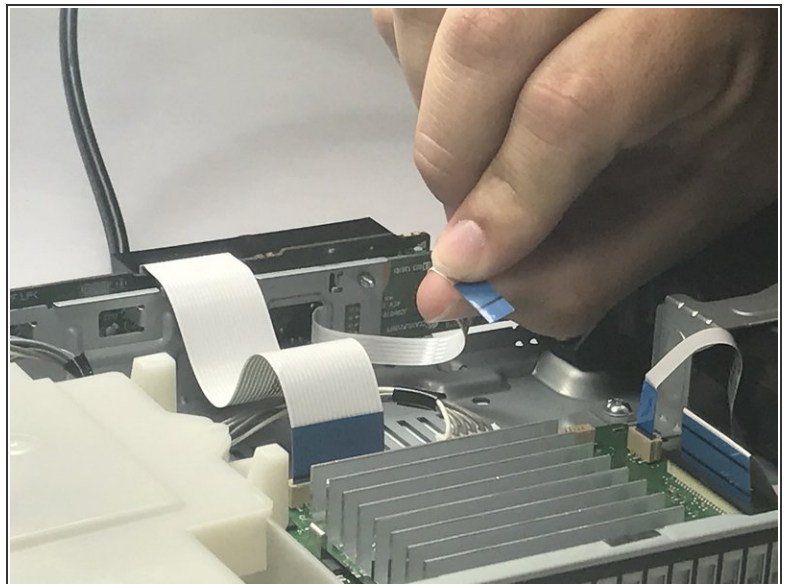
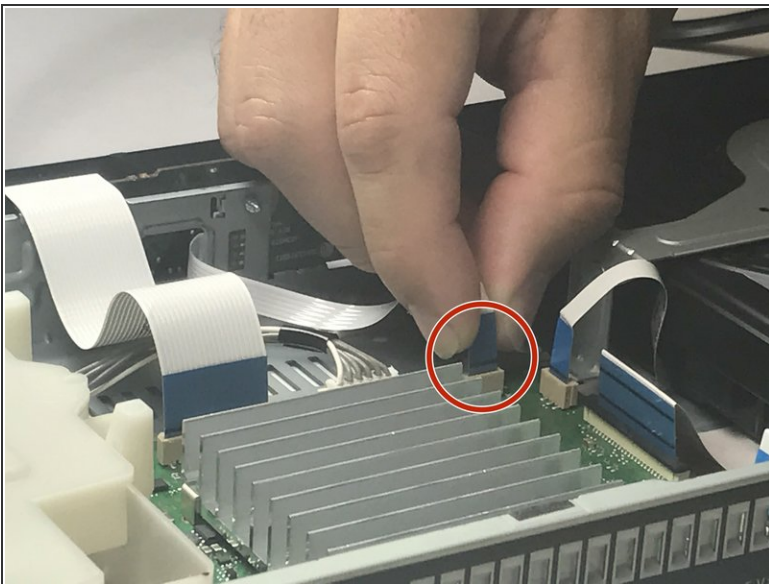
- Use your Phillips screwdriver to take out the silver screw holding in the port board.

Step 6



- Now use the tweezers to unclip the portboard on the side.

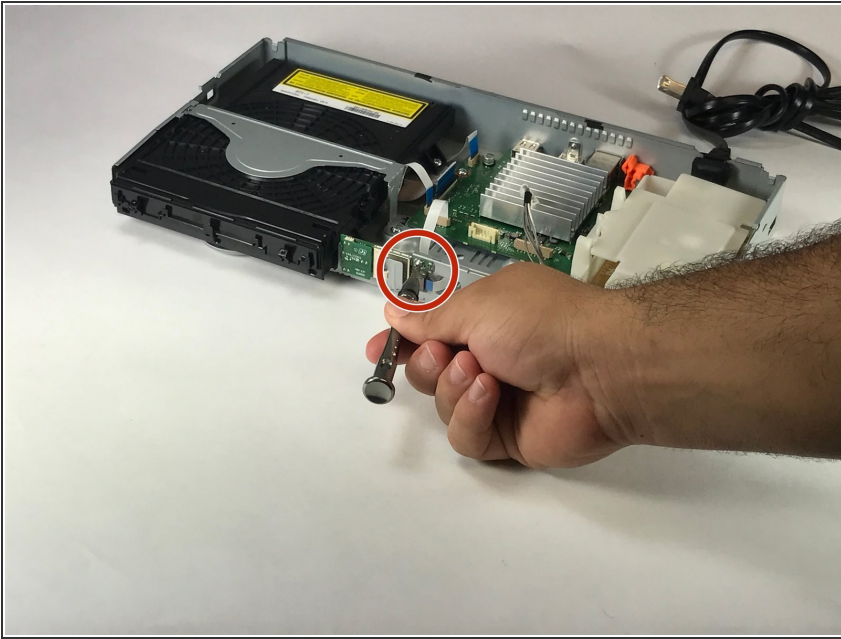
Step 7 — Bluetooth Module



- Now, pull the small ribbon cable that connects between the motherboard and the Bluetooth module.

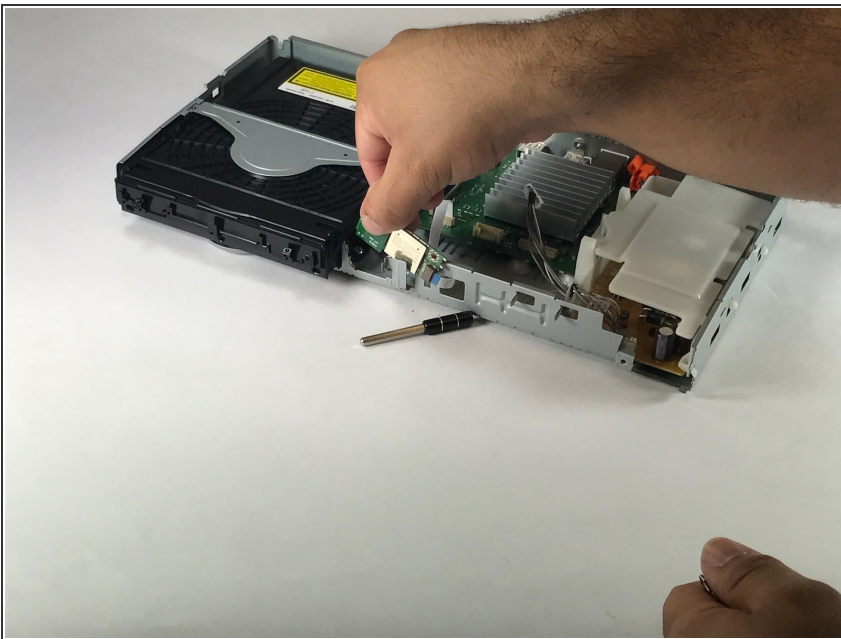
⚠ Be careful to not pull too hard or the ribbon cable will rip.

Step 8



- Use your Phillips screwdriver to remove the silver screw holding the Bluetooth module in place.

Step 9



- Lift to remove the bluetooth module from the device.
- ⓘ To prevent damage, always hold it on the sides.

To reassemble your device, follow these instructions in reverse order.