



# Sony BDP-BX620 Disk Drive Replacement

This repair guide will demonstrate how to remove the disk drive of this device.

Written By: Axel Cruz Jimenez



---

## INTRODUCTION

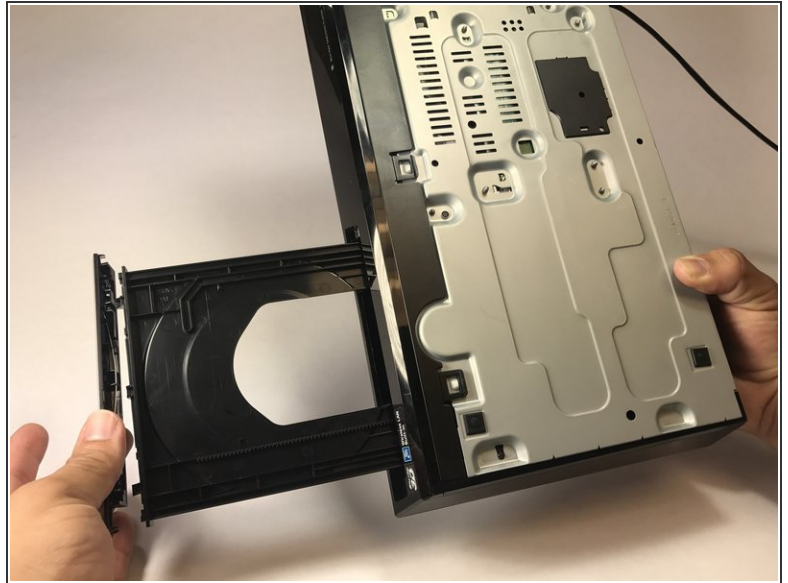
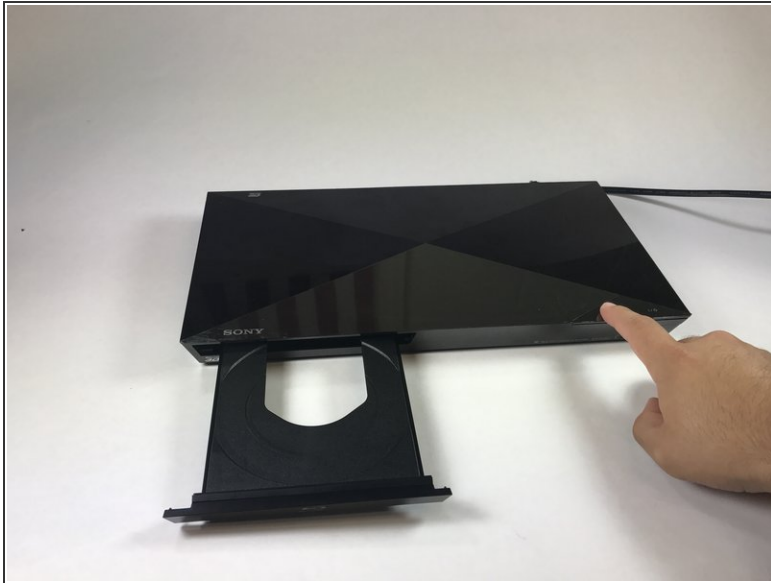
In this guide you will learn how to remove the disk drive from a Sony BDP-BX620.



### TOOLS:

- [Phillips #0 Screwdriver](#) (1)
  - [Tweezers](#) (1)
-

## Step 1 — Outer Cover



- Power on the device, eject the disk tray, and power off the device.
- Turn the device over.
- Lightly apply downward pressure on the black covering on the disk tray until it snaps off.

 Caution, applying too much pressure can break the black covering.


## Step 2



- Turn the device around.
- Using a Phillips screw driver, remove the screws on both ends of the device circled red in the image.
- Slide the side covers on either side towards the back of the device.
- ⓘ There is a back cover on either side of the device.

## Step 3



 This step might require someone to help unclasp the plastic clips.

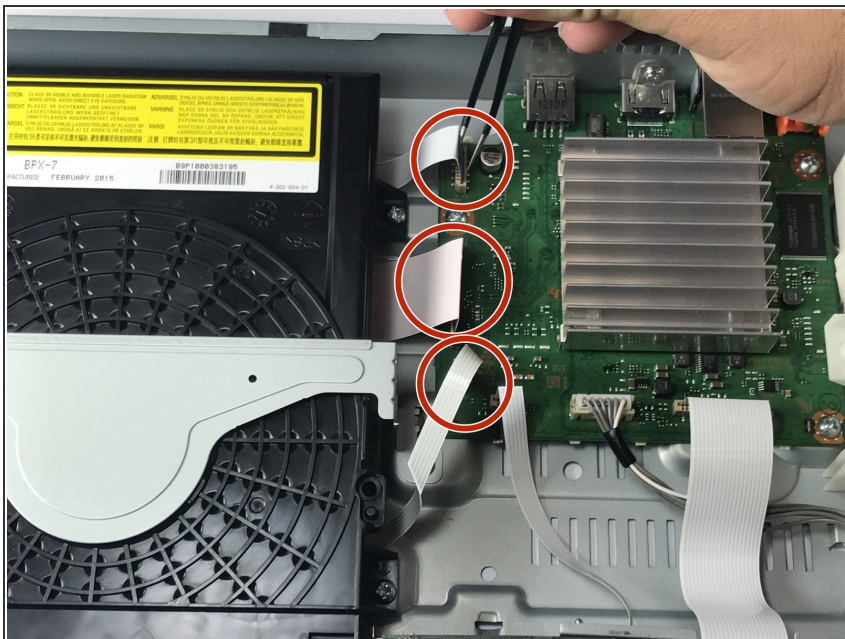
- Turn the device so that the bottom is facing up.
- In the bottom, unclip the three plastic clips circled in red.
- On either side, unclip the plastic clip circled in red
- Slide the black covering forwards to remove.

 All five clips have to be unclasp for the covering to be removed.

 Careful not to break the plastic clips when putting it back on.



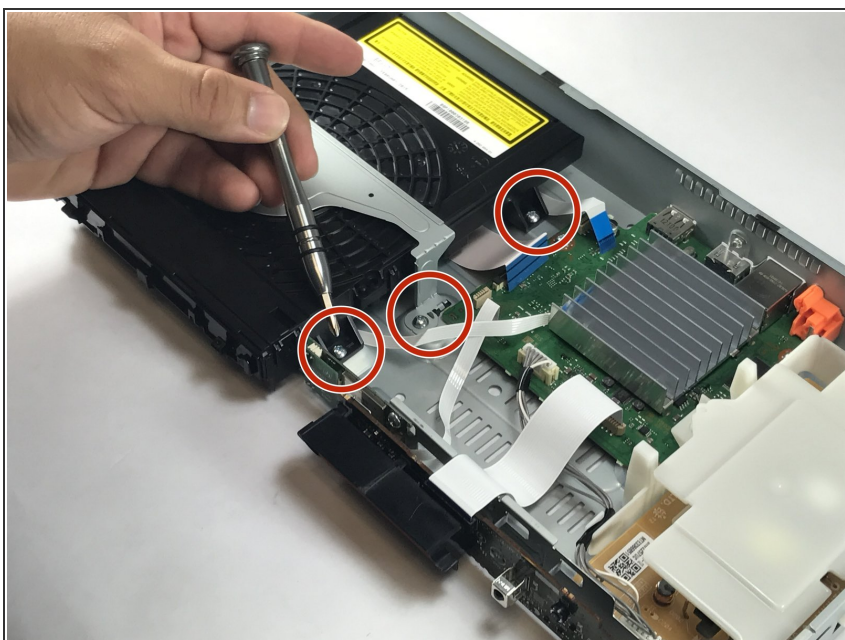
## Step 4 — Disk Drive



- Remove the no-fuss ribbon cable connectors by gently pulling on them.

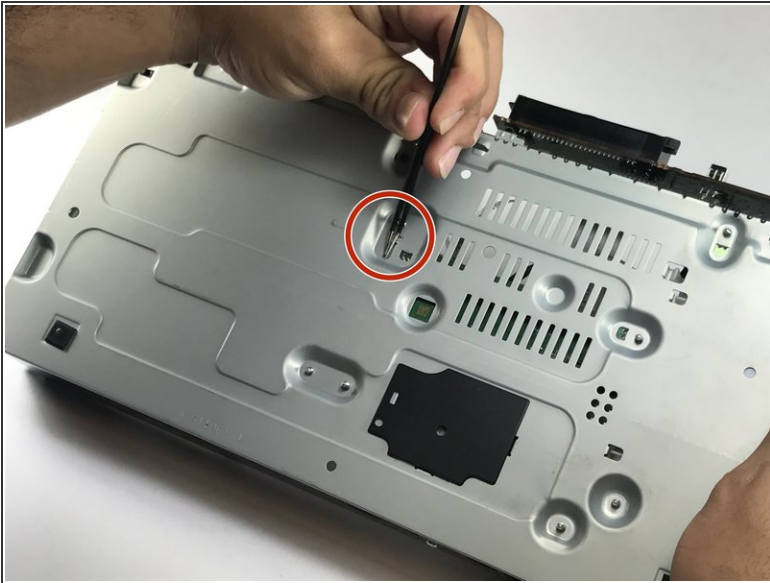
⚠ Pulling harshly may break the flat cables.

## Step 5



- Using the Phillips screw driver, remove the three screws.

## Step 6



- Turn the device over and use tweezers to push the metal clasp until it comes off.
- Lift the metal brace located over the disk drive and remove the disk drive and the metal brace.

To reassemble your device, follow these instructions in reverse order.